

East Woodhay & Highclere Coronavirus Community Support



Highclere
Society



EWH Neighbourcare



Inside our Newsletter #16 – 3rd July

[Surgery Changes](#)
[It's Party Time But Not Quite Yet](#)
[Clap for Carers](#)
[Consultation on a New Hospital](#)
[Mental Health Support](#)
[Access to Recycling Centre to End From the Rector](#)
[West Berks Foodbank](#)
[Quizzes & Games](#)
[Activities](#)
[Thanks](#)
[Plant Sale](#)
[Malverleys Garden Open Day](#)

We are here for you – one number to have:

- prescriptions delivered
- shopping collected
- a friendly chat on the phone

01635 745 600

<http://www.ewhneighbourcare.org.uk>

If you are reading this newsletter on Facebook or another site that means you cannot access the links to other websites go to:

<http://www.eastwoodhay-pc.gov.uk>
and click on "Coronavirus updates" heading.
You can access and download the PDF file with active links from there.

Surgery Changes

For the past 14-15 weeks repeat prescriptions for all patients of both Woolton Hill and Kintbury surgeries have been dispensed from Woolton Hill and something approaching 4,000 prescriptions have been delivered by Neighbourcare to patients of both surgeries. These are in addition to the prescriptions collected by patients from the surgery. Woolton Hill surgery has risen to the task of coping with this increased workload brilliantly; yet another display of how fortunate we all are to be in their catchment.

With effect from Monday 6th July, Kintbury surgery will re-open fully for patients and prescriptions.

All repeat prescriptions for Kintbury patients which have not been collected at the end of Friday 3rd July will be moved to Kintbury and should be collected from there.

For information regarding opening hours etc. it is advisable to contact their website. Click [HERE](#). However, if you require a prescription delivering from the Kintbury surgery please continue to ring **01635 745600** until you are advised of an alternative number.

If you are going to either Woolton Hill or Kintbury surgery, please remember you will be required to wear a mask or some alternative face covering.

The re-opening of Kintbury surgery will not affect the delivery of repeat prescriptions from Woolton Hill surgery. Should you require a repeat prescription delivering just ring **01635 745600**.

It's party time but not quite yet!

New lockdown rules from 4th July mean changes for people living in England.

Now one household can spend time with another one indoors so long as they follow social distancing guidelines. This is on top of the rules about meeting outside - where you can still meet in groups of up to six from different households - again keeping your distance.

But what is the best way to ensure you do everything you can to keep people safe? The BBC have put together this handy, fun and short video. It's well worth a watch – click [HERE](#).

As part of the government's next phase of lockdown restrictions being eased, more non-essential retail and hospitality premises, such as hairdressers, restaurants and pubs, can reopen from Saturday 4th July.

Everyone is being encouraged to be considerate of other visitors. Bars, pubs and restaurants are likely to have new measures in place such as booking systems and new seating arrangements.

Each venue is likely to have slightly different arrangements so make sure you pay attention and stick to their house rules. In general, you are likely to find the following:

- In line with government advice and to help with the NHS test and trace program, your details may be requested and retained for 21 days after your visit.
- Government guidance remains that per table indoors you may have up to 10 people but from 2 different households only, with social distancing. Outdoors you may have a table of up to 10 people from 2 different households or 6 individuals.
- Customers will be encouraged to use hand sanitiser or handwashing facilities as they enter the venue.
- Customers who are accompanied by children will be reminded that they are responsible for supervising them at all times and should follow social distancing guidelines
- Customer self-service of food, cutlery and condiments will be minimised to reduce risk of transmission. For example, cutlery and condiments may be provided only when food is served.
- Contactless payment is encouraged where possible and the location of card readers adjusted to social distancing guidelines.
- All social distancing marking must be followed in areas where queues normally form, or the adoption of a limited entry approach, with 1 in, 1 out observed e.g. toilets.

Play areas are also opening once they have been inspected. Signage will be placed at each location asking people to follow government guidance including:

- giving other people space in line with the current social distancing guidance
- washing hands before and after visiting
- using hand sanitiser gel or wipes to clean hands
- putting tissues or rubbish in the bins provided.


No food or drink should be consumed in the play areas and people are asked not to use the facilities if they are busy, to help keep themselves and other safe.

Local Pubs

Not all venues are opening this Saturday July 4th and not all will be resuming restaurant service immediately. The latest information we have is as follows but check before going as the situation is likely to change as more experience of the new ways of working is gained:

- **The Carnarvon Arms**

Not reopening until July 20th. Bookings can be made via their website [HERE](#)


Tel: (01635) 278 222 

- **The Carpenter's Arms**

Reopens July 4th initially with BOOKINGS ONLY for both drinkers and diners. If you want to book a table for a drink or food either email or call.

Closed Monday. Open Tuesday – Friday 11 till 3.00, 6 till 10.00pm. Food 12:00 till 2.30, 6 till 9.00pm. Saturday open 11 till 11 pm. Food 12 till 2:30, 6 till 9.00pm.

Sunday Open 11 till 6pm. Food 12 till 4:00pm.


Website is [HERE](#) Tel: (01635) 278 251 

- **The Furze Bush**

Reopens noon July 4th. Initially they will be offering a slightly reduced menu alongside the normal drinks selection. Following guidance from the government a 1m+ social distancing rule will be maintained throughout the bar, restaurant and gardens.


Bars are open from 9am until 11pm Monday to Saturday, and from 12pm until 10:30pm on Sundays.

Food Service: Monday to Friday 12pm – 2.30pm and 5pm – 8pm, Saturday and Sunday 12pm – 8.00pm.

Website is [HERE](#) Tel: (01635) 253 228 

- **Highclere Red House**

Reopens July 4th. Will not be serving food inside the pub, however the full takeaway menu & pizza menu will remain available for collection or delivery until further notice. Bar for Drinks only open Tuesday - Saturday: Midday - 9.00pm
Takeaway Menu & Pizza: Tuesday - Saturday: Midday - 9.00pm

Website is [HERE](#) Call (01635) 255 531 to order food. 


- **The Jack Russell Inn**

Reopens July 4th. RESERVATIONS ONLY which can only be made via the website at present. Open Monday to Thursday: 8 – 10am | 12 – 3pm | 6 – 9pm
Friday to Saturday: 8 – 10am | 12 – 3pm | 6 – 9.30pm
Sunday: 8 – 10am | 12 – 7pm

Website is [HERE](#) Tel 01264 737 315


- **The Pheasant Inn, Highclere**

Reopens July 4th. Operating a BOOKING ONLY system upon opening, with 2 hour time slots. Opening: Monday and Tuesdays closed; Wednesday-Saturday 8:30am-11:00pm; Sundays - 8:30am - 9:00pm. Food served: Breakfast 8:30am - 10am Wednesday – Sunday; Lunch 12:00pm - 2:30pm Wednesday – Friday, 12:30 - 3:00pm Saturdays. Dinner served 6:30pm - 9:00pm Wednesday – Thursday, 6:30pm - 9:30pm Friday and Saturday. Food served from 12pm - 7:30pm Sundays

Website is [HERE](#) Tel: (01635) 253 360 

- **The Rampant Cat**

Reopening July 4th at 12 noon for drinks only. First week of opening times: Saturday and Sunday 12.00 – 8.00pm, Monday-Friday 2.00-8.00pm, Saturday 12.00-8.00pm. Food takeaway service only: Saturday 4th July no service, Sunday 12 noon -3 pm, Friday and Saturday 4- 8.00 pm. Calls are taken for orders only Wednesday, Thursday and Friday between 12pm-2pm. If you are unable to call during those times, please call and leave a voicemail or message via Facebook with your order.

Website is [HERE](#) Tel: (01635) 253 474 

Clap for Carers – 5pm Sunday 5th July

A nationwide clap to thank the NHS will take place on Sunday 5 July, in what is intended to become an annual tradition. People will be encouraged to applaud the heroes of the pandemic with family and friends at 5pm that Sunday, the 72nd anniversary of the NHS.

Many broadcasters will break away from normal programming to mark the moment. On Saturday 4th July, the evening before, we are asked to put a light in the window in remembrance of all those lost to the coronavirus pandemic.

Consultation on a New Hospital

Hampshire Together is a programme that will deliver a new hospital to serve the people of north and mid Hampshire, as well as many other healthcare benefits under consideration. All NHS and social care organisations across the area are involved as they strive to support patients, their families and their carers to access the right care, in the right place, at the right time in order to keep them healthy.

A new hospital supports this ambition, but the programme's impact will reach far beyond the walls of this new building, involving GPs, mental health, community care, social care and the wider voluntary sector, as well as acute hospital care. It will also involve investing in our existing hospitals. The objective is to change health services across the area to make them work better, both for patients and hard-working staff.

Nothing, including the location of, and services provided in, any future hospital has yet been decided. This programme will affect the way all of us live in our area and therefore it is important that local views are taken into consideration.

More information about the programme can be found [HERE](#) and in the listening document [HERE](#) has been created to set out the challenges, opportunities and decisions involved in Hampshire Together.

You can have your say by filling out the online comment form [HERE](#).

If you would rather submit your views by post, send your name and address to FREEPOST Hampshire Together (no stamp required) and they will send you a copy of the listening document and a feedback form to fill in.

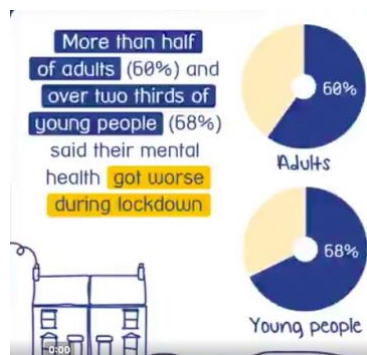
Closing date is Friday 31st July 2020.

Mental Health Support

A recent Mind survey found that lockdown has had an impact on the mental health of many of us.

Do not suffer alone.

If you feel as though you've been affected and would like some support contact Mind on 01264 332297 or email mind@andovermind.org.uk



Access to Newtown Road Recycling Centre to end

For those that have a Hampshire permit for the Newbury Household Waste Recycling Centre (HWRC), often referred to as the 'tip', these will no longer be valid as of the 1st August. The only other options are Andover and Basingstoke. For more details click [HERE](#)

HWRC's in Hampshire are HCC's responsibility and not that of the Basingstoke and Deane Borough Council (BDBC) who deal with kerbside waste collection. However, BDBC is urging Hampshire County Council (HCC) and West Berkshire Council to rethink a decision that could see nearly 5,000 of the borough's residents now facing travelling miles to take their waste and recycling to a tip. Local HCC councillor is Tom Thacker (tom.thacker@hants.gov.uk) and Rob Humby can be contacted on rob.humby@hants.gov.uk

The BDBC has strongly objected to the proposed cut in funding since it was put forward and has appealed to both authorities to find a solution that meets the needs of residents close to the border and doesn't impact on the environment.

Local borough councillor for East Woodhay and former leader of Basingstoke and Deane, Clive Sanders, said:

"This area of Hampshire is very badly served by HCC in relation to HWRC facilities, compared to the rest of Hampshire. We must travel further than any other Hampshire residents to reach an HCC HWRC and this is a problem that HCC have consistently failed to resolve. In future it will be NW Hants residents who will be subsidising the rest of Hampshire by paying for services they don't receive."

The man from Mars would find it clear stupidity for residents to be forced to make 30-40-mile round trips to dispose of waste when an HWRC is on their doorstep. It is bureaucratic madness that drives a coach and horses through the councils' policies to reduce emissions.

It is equally financially incompetent of W. Berks to imagine that when the HCC subsidy is withdrawn, they are somehow going to make £175,000 of savings. How many redundancies will there need to be at Newtown Road to recover the lost revenue? It won't happen, so costs to the W. Berks taxpayer will go up.

Neither council emerges from this ridiculous stand-off covered in glory, but it is the council taxpayers in both Hampshire and W. Berks who will finish up suffering.

The failure of both councils to use common sense to find a solution is a clear sign of a lack of administrative competence and political leadership on both sides to act in the best interests of the residents they are supposed to serve. They should both be ashamed."

And Basingstoke and Deane Cabinet Member for the Environment and Enforcement, Cllr Hayley Eachus said:

"It is extremely disappointing that we could find ourselves taking a backwards step towards achieving our climate emergency targets not only in Basingstoke and Deane but as a county and country.

The previous agreement between West Berkshire and Hampshire County Council demonstrated a real common sense approach for our residents in the north of the borough, providing them with access to a recycling centre close to where they live rather than up to a 40 mile drive.

I am urging the two authorities to talk again and talk with us to find a solution."

From the Rector: Revd Canon Christine Dale



Thank you to all our volunteers and to our fantastic Neighbourcare team. The invaluable information in this newsletter each week is such a help and reminds us how important it continues to be that we care for one another and be aware of each other.

Last Sunday we held an online Holy Communion and 55 folk joined in with a further 12 coming along for online Evensong. This coming Sunday (5th July) we are online at 9.30am for a Family Service and at 11.00am for Holy Communion. If you would like to join our e-mail circulation for details and joining codes for services, please send your e-mail address to me (contact details below).

Our church buildings are open for private prayer according to the times shown in the notice (St James' Church, Ashmansworth, opens again on 11th July). Thank you so much to our churchwardens and volunteers who are enabling this to happen.

NORTH WEST HAMPSHIRE BENEFICE
St Thomas' Church, Woolton Hill • St Michael & All Angels', Highclere • St Martin's Church, East Woodhay • St James', Ashmansworth • St Michael & All Angels', Crux Easton
...making Christ known in our communities

Welcome!

We are pleased that we now have permission to open our church buildings for individual prayer – with the required support in place for social distancing requirements, hand sanitization, thorough hygiene, and supervision of buildings.

Churches open for individual prayer

Opening times

- St Thomas' Church, Woolton Hill**
Wednesdays 2pm-4pm
- St Michael & All Angels', Highclere**
Fridays 10am-12noon
- St Martin's Church, East Woodhay**
Sundays 2pm-4pm
- St James', Ashmansworth**
Saturdays 2pm-4pm
(once a month start date yet to be confirmed)
- St Michael & All Angels', Crux Easton**
(the church building is remaining closed for the time being)

We have begun work on the risk assessments and guidelines to help us prepare to hold worship in our church buildings again. So I look forward to sharing more news on this next week... we do know that, where the capacity of a church building allows, up to 30 folk are now permitted to attend baptisms, weddings and funerals (with the inevitable and important physical distancing and hygiene regulations in place).

with every blessing to you all

Revd. Canon Christine Dale
(e-mail: cdale001@btinternet.com, Tel. 01635 253323)

West Berks Foodbank

West Berks Foodbank thanks people very much for your generous responses, however, as seen on the front page of Newbury Weekly News their need is even greater. Several people have asked about donating money rather than food. To make donations click [HERE](#).

For full information, their website is [HERE](#)

They have two local collection points where they are accepting donations for dried and canned goods.

Fran is the West Berks Foodbank Manager and Justine is a Lead Volunteer with the Foodbank

Fran Chamings	Justine Fry
4 Penwood Heights	13 Douglas Ride
Penwood	Woolton Hill
RG20 9EY	RG20 9UG

They have containers outside the houses for the food.

They would welcome donations of the following:

Tinned Meat Meals (Curry, Chilli, Stewed beef etc), Tinned Fish, Tinned Fruit, Tinned Vegetables, Custard, Sponge Puddings, Pasta, Pasta Sauce, Tinned Tomatoes, Long Grain Rice, 500gm Granulated Sugar, Cereal (not porridge), Squash, Long Life Fruit Juice, Confectionary

Quizzes & Games

Forestry England offers several free downloadable games, including Tree Trumps – play along and get to know your trees at the same time! [HERE](#)

Activities

14 – 21 year olds – Unlocked and Unbolted - the Corn Exchange is launching a collaborative project for young people to share their thoughts and experiences of Covid-19. Young people aged 14 – 21 are invited to sign up for group Zoom conversations between 9th & 16th July with the creative team, led by director Bryn Holding. These conversations will become the inspiration and the source material for a new piece of theatre which will form a socially distanced live performance presented by a group of young performers later in the year. Click [HERE](#) for details.

A Question for you – the Corn Exchange in Newbury responded quickly to the lockdown with a range of on line arts, crafts and community activities for all ages. Now they are looking ahead for future activities, and welcome feedback. To take part, click [HERE](#)

Arts and Crafts to see and do – Hampshire Cultural Trust has a range of on line exhibitions from local galleries and museums as well as activity packs Click [HERE](#)

For Children – the Summer reading challenge with the silly squad has started – join to receive book recommendations, badges and games. Click [HERE](#)

Hampshire Libraries reopen 6th July, but still have plenty of on-line offerings. Click [HERE](#) for details.

Watch free live stream performances

from the National Theatre – **Les Blancs** by **Lorraine Hansberry**, available from Thursday evening 7pm. To find out more, click [HERE](#)

Thanks

A huge thanks to Woodland Stores in Penwood for putting a collection container on their front desk and for all their customers in giving £64.19 to help support Neighbourcare in delivering prescriptions and shopping.



Plant Sale

St Thomas' Church
Plant Sale
in
Church Grounds
Saturday
4th July
2.00pm to 4.00pm
Cakes – Marmalade – Jams
also available



Malverleys Garden Open Day

Malverleys Garden Open Day

Saturday, 18th July 2020

In support of St Martin's CE Primary School



The gardens will be open for three 2-hour time slots on Saturday, 18th July 2020. Tickets must be purchased in advance.

The entrance fee will be £12 per person (children free) paid by cheque prior to the event and will now include a small gift parcel with produce from the garden. All proceeds will go to St Martin's primary school.

Choose from the following admission times:

Group 1: 10:30 – 12:30

Group 2: 12:30 – 14:30

Group 3: 14:30 – 16:30

Please email Jess Reese, Jess@Malverleys.co.uk, to reserve your tickets or for more information.

The garden includes abundantly planted long borders, terraces; a stumpery with ferns and unusual shade plants, a yew and box parterre and a topiary meadow. Tall yew hedges form themed garden rooms including a cool garden, a hot garden, a rose-clad cloister garden, and a large pond garden which reflects the dynamic planting on all sides. The walled garden contains a glasshouse, a white garden alongside areas for fruit, vegetables and cut flowers. Malverleys garden has received considerable press attention in recent years including publications in magazines such as Gardens Illustrated, The English Garden, Country Life, House and Gardens, and has also been featured on BBC Gardener's World.

Next Newsletter

The following newsletter will be issued next week. You can request to receive this newsletter directly by registering via the website Click [HERE](#)

East Woodhay & Highclere Coronavirus Community Support



Page 8 of 8



Highclere
Society



Newsletter #16

EWH Neighbourcare



Ashmansworth
and Cleeve Easton Parish Website

03/07/2020