

# Spectrum



Guardians of The Chase

50p March 2024



## HANNINGTON & GREEN CONTRACTING

Hannington & Green Contracting offer a wide range of services in domestic, industrial and commercial installations of electrics, kitchens, bathrooms and office spaces, as well as property maintenance and building services.

- Electrical Installation
- Data Installation
- Solar PV
- Kitchens
- Bathrooms
- Commercial Fit-Out
- Property Maintenance
- Building Services

**All our services are available to domestic, commercial and industrial clients.**



01635 285354



info@hanningtongreen.co.uk

[www.hanningtongreen.co.uk](http://www.hanningtongreen.co.uk)

# Fieldfare



## TREES & GARDENS

- Garden Maintenance
- Trees & Hedges
- Small Landscaping Projects

Call Matthew Butler :

07884 551 778

01635 226 429

[fftrees.co.uk](http://fftrees.co.uk)

[matt@fftrees.co.uk](mailto:matt@fftrees.co.uk)

# Editorial

**T**his month's edition of *Spectrum* has a focus on volunteering. Hilary Hainge's fascinating article about The Monday Club tells the story of The Chase and the work of the dedicated band who ensure it continues to thrive as haven for nature. It's a green space that is more vital than ever in the face of ever encroaching development. The recent news of the go-ahead for 270 houses at Wash Water shows how important such well-protected countryside is for our community.

Elsewhere in *Spectrum* Chris Sketchley describes a day in the life of Neighbourcare, the local organisation that helps people get to their medical appointments and delivers their prescriptions. And the East Woodhay Management Team have written about what is needed to preserve and reinvigorate East Woodhay Village Hall. Then of course there are the *Spectrum* regulars: reports from voluntary organisations such as the Women's Institute, Women in Touch and The Scouts, and the local cultural and horticultural groups. Alongside these there are regular news updates from the pillars of our community: the Schools, the Church, and the Parish Council. All depend on the help of volunteers.

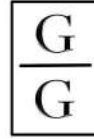
This is nothing new. Two hundred and fifty years ago the political philosopher Edmund Burke wrote that what he called 'the little platoons' of people who gave their time to local causes were the cement that glued society together. And they remain so today.

But they face many headwinds. It seems that much volunteering in East Woodhay today is done by older people. Busy working couples have less time now to dedicate themselves to anything other than work and family. Then there's new technology which, for all its benefits, tends to make people more isolated from their communities, and possibly less likely to engage in traditional causes.

If volunteers are getting older, the question is whether they are becoming an endangered species. Some argue that it's not a worry. As people retire, they will always look for something to do; many will want to give something back. But you don't have to be an expert to know that organisations are invigorated by younger people. They need their energy and readiness for change. It's one of the biggest questions East Woodhay faces: how best to reinvigorate the little platoons that keep our community alive and well. And we are not alone - it's a pressing question for our country as a whole.

**Denys Blakeway**





GOLD & GREY

## MARCH MADNESS

**15% OFF**

Designer Curtains  
And Blinds

Until March 31st

Call Linn On **07795 247142**

Explore Our New Online Shop:

[www.goldandgrey.uk/shop](http://www.goldandgrey.uk/shop)

City &  
Guilds  
NPTC



**greentips**

TREE SURGERY

YOUR LOCAL TREE CARE SPECIALIST

•Fully Qualified and Insured

•Tree Surgery

•Planting•Pruning•Removals

•Hedge Cutting

•Stump Grinding

•Woodland Management

•Chip, Mulch & Logs for Sale

T: 01635 254712

M: 07903 259973

[www.greentipsuk.com](http://www.greentipsuk.com)

# Diary of Events March 2024

Friday	1st	Woodhay Walkers	WHCH 10.30am
		Community Cafe	St. Thomas' Church 10-11.30am
Monday	4th	Evergreens	HVH 4.15pm
		Beavers	EWVH 5.30pm
Tuesday	5th	Cubs and Scouts	EWVH 6pm, 7.30pm
Wednesday	6th	EW Short Mat Bowls	EWVH 7.30pm
Friday	8th	Woodhay Walkers	EWVH 10.30am
		Community Cafe	St. Thomas' Church 10-11.30am
Monday	11th	Beavers	EWVH 5.30pm
Tuesday	12th	EW WI	EWVH 2.30pm
		Cubs and Scouts	EWVH 6pm, 7.30pm
Wednesday	13th	EW Short Mat Bowls	EWVH 7.30pm
Friday	15th	Woodhay Walkers	WHCH 10.30am
		Community Cafe	St. Thomas' Church 10-11.30am
Monday	18th	Beavers	EWVH 5.30pm
		History Society	EWVH 8pm
Tuesday	19th	Arbor Flora	HVH 2pm
		Cubs and Scouts	EWVH 6pm, 7.30pm
Wednesday	20th	EW Short Mat Bowls	EWVH 7.30pm
Friday	22nd	Woodhay Walkers	Downgate Pub 10.30am
		Community Cafe	St. Thomas' Church 10-11.30am
Monday	25th	Beavers	EWVH 5.30pm
		EW Parish Council	EWVH 7.30pm
Tuesday	26th	Cubs and Scouts	EWVH 6pm, 7.30pm
Wednesday	27th	EW Short Mat Bowls	EWVH 7.30pm
		Highclere Poetry Grp	Brick Kiln Cottage 7.30pm



Printed by:  
<https://ostrich-print.com>

(Ashbysoft \*)

Published by:  
<https://ashbysoft.com>

**Editor for April, May & June 2024:**

Mary Gulliver

email: [mary@thegullivers.co.uk](mailto:mary@thegullivers.co.uk)



### OUR SURGERIES:

Burlyns Surgery, Burlyns,  
East Woodhay, Newbury,  
Berkshire, RG20 0NU.

Foxhold House Surgery,  
Crookham Common,  
Thatcham,  
Berkshire, RG19 8EL



We can help you meet all your pet and equine healthcare needs, with professional and caring staff who can treat your animal at a time that suits you. **Out vets offer an emergency service** giving you 24 hour reassurance.

*...we're here to listen*

**24 hour phonenumber: 01635 254544**

**www.coachhousevets.com**

## AREA SWEEP

### CHIMNEY SWEEP

A PROFESSIONAL CHIMNEY SWEEP SERVICE  
CLEAN RELIABLE BRUSH AND VACUUM  
FULLY INSURED MANY YEARS EXPERIENCE

AGA'S  
RAYBURNS  
JETMASTERS  
ALL OPEN FIRES  
WOODBURNERS  
NEST REMOVALS  
OIL FIRED BOILERS  
SWEEPING CERTIFICATES ISSUED  
CAPS AND COWLS SUPPLIED AND FITTED



CALL DARREN

01635 569195/07900398678

areasweep@btinternet.com



## the Alexander Technique

Relieve back & neck pain  
Enhance health & well-being  
Improve posture & stamina

*for lessons and courses:*

Judith Turner MSTAT

01635 253981

07771 896696

judeturner7@gmail.com

www.jt-alexandertechnique.co.uk

## WINDING WOOD VINEYARD

Open to small parties  
for tours and tastings  
from May to October

www.windingwoodvineyard.co.uk | hello@windingwoodvineyard.co.uk | 07798 885050

# East Woodhay Local History Society



January's meeting was our AGM where the business was completed swiftly. We then had two members' talks before concluding the evening with wine and nibbles kindly organised by Avril Cole. David Skyrme gave a breakdown of the Parish in the 1921 Census with regard to population, occupation etc. I then gave a talk about two American planes colliding over Crux Easton in 1944 and how my research had unfolded.

My investigation started many years ago on a walk at Crux Easton with my husband. Under a beech tree we found a small



T D Stewart



W E Evers

memorial garden that often had a poppy on it, but then became neglected. In 2022 I decided to find out more about the crash, and asked about it in Spectrum. Information was forthcoming and I discovered that two US military Lockheed Lightnings had collided whilst on a training mission from their base in Andover. Both pilots, William E. Evers and Thomas Dee Stewart, died. By the wonders of the internet, I found out that one plane crashed at Crux Easton and the other near Ashmansworth. I also found photos of the two pilots on Ancestry and wrote to the families. I had a reply from one family who were delighted that the men were still remembered. Having done all my research, I then discovered that Lady Carnarvon has an excellent website about all the air crashes on the Highclere estate during WW2 & is well worth a look: [ladycarnarvon.com/airmen](http://ladycarnarvon.com/airmen)

Our March meeting will be on Monday 18th at the Village Hall, Heath End at 8pm. The speaker will be Pauline Stokes. Penny is a well-known local history author and her most recent book is 'Georgian Newbury'. In her talk she will focus on some of the stories and characters of this important period in Newbury's history.

**Chris Dalton, Secretary.**

## Personal Computers

new - repairs - upgrades - data recovery - no job too small

phone John on 01635 254102

# ATH PLUMBING & HEATING

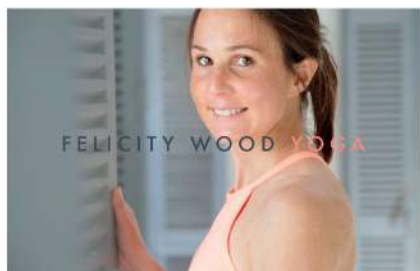
OFTEC Registered

- New boiler & system installations
- Mains pressure hot water cylinder -service & installation-
- Maintenance
- Insured, references available, free estimates
- Bathroom installation

*Please call Nigel Brown:*

**01635 254787 07979718427**

***athplumbingheating@gmail.com***



## YOGA IN EAST WOODHAY

GROUP & PRIVATE CLASSES

SUITABLE FOR ALL LEVELS,  
INCLUDING BEGINNERS

CONTACT FELICITY

07980 304590

FELICITY@FELICITYWOODYOGA.COM

BOOK YOUR PLACE

FELICITYWOODYOGA.COM

FWY

## Robins Garden Services



*Garden design and  
maintenance*

**Professional and experienced  
pruning services**

For all your winter pruning needs:

- Roses
- Wisteria
- Grapevines
- Deciduous shrubs
- Fruit trees and bushes

RHS L3 qualified and fully insured

Contact Claire on 07833 063891  
Robins.GardenServ@Gmail.com

# R. D. RUTTERFORD

## OIL FIRED BOILER MAINTENANCE

MEADOW VIEW  
BROAD LAYINGS  
WOOLTON HILL  
NEWBURY  
BERKSHIRE RG20 9TS

01635 253257

Mobile: 07771 610145





# Women In Touch

**O**ur first topic of the year, *Your Favourite Group*, posed a difficult choice for some. We listened to a variety of music, tapping our feet to the beat.

We heard Queen and Pink Floyd, both formed by college students who were also talented musicians, The Small Faces, a 1960s Mod group, based around Carnaby Street, Fleetwood Mac, an American band, formed in the 1960s and Annie Lennox, originally part of the Eurythmics and a successful solo artist in the '90s.

In contrast were The Seekers, an Australian Folk group, their melodic songs selling over 50 million records worldwide and Cherish the Ladies which took its name from a traditional Irish jig, an all-female group that plays Celtic music. Ben Bruant and Will Cashel, known as Duo, play Classical Guitars in a style fusing Flamenco, Pop, and Classical music and have performed at Newbury Spring Festival.

After an introduction to the evolution of the modern symphony orchestra from small instrumental groups to the large ensembles of today with 100 plus musicians and the Conductor taking a significant role we enjoyed Champagne Polka by Johann Strauss.

An entirely different type of group was the Hash House Harriers, formed in 1938 in Kuala Lumpur, an international, non-competitive running club with a 'Hare and Hounds' theme. The 'Hare' would leave a trail of paper or flour for the 'Hounds' to follow, ending up in a pub for beer and refreshments, leading to long-lasting friendships and keeping fit.

Our second meeting tackled the issue of The Future of the High Street. Personal experiences and opinions were in no short supply as the group discussed this topic. Its future as the thriving heart of a town's community was accepted as in decline, not only because of the tremendous growth in on-line shopping, but also because of high business and property rental rates and expensive car parking. On a brighter note some success stories were mentioned; Totnes, Bury St Edmunds and Marlborough to mention just a few. These towns have capitalised on their architectural heritage and maintained small and diverse independent retail and personal service businesses.

The presence of banks was important and a move away from large retail stores and modern shopping precincts. Possible solutions mentioned were to have more residential housing, attractive green spaces and schemes for more community ownership.

We concluded Newbury High Street still hasn't managed to solve some of its ongoing problems but for most of us it was still a pleasure to visit it.

**Nicole Bentham**



# [www.wooltonhill.com/spectrum](http://www.wooltonhill.com/spectrum)

Spectrum is a monthly community magazine serving East Woodhay and Woolton Hill. It is run by a committee of volunteers and is a not for profit publication.

Reports on village activities and articles of local interest are welcomed for publication subject to the discretion of the editor. Copy should reach the editor by the seventh day of the month preceding publication and should be a maximum of 500 words. In the event of pressure for space, the editor reserves the right to reduce the length of the article while attempting to maintain the style of the writer and retaining as much content as possible. The editorial committee accepts no responsibility for the views expressed by Spectrum contributors or for the quality of goods and services provided by advertisers in this magazine.

**The contents of this magazine are protected by copyright and nothing may be reprinted without prior permission.**

## Woolton Hill Post Office and Stores

Post office, Newsagent, National Lottery  
Off-Licence & General Stores

Post Office Open:

Monday to Friday 9am-5.30pm

Saturday 9am-12.30pm

We also hold Euros and Dollars



We also deliver newspapers in  
surrounding 4 miles.  
Woolton Hill Post Office & Stores  
Broadlayings  
Woolton Hill RG20 9TR  
**01635 253463**

**RED**  
76  
CHARTERED  
ACCOUNTANTS  
& BUSINESS  
ADVISERS

Free initial consultation at a time to suit you

- Corporation tax
- VAT
- Bookkeeping
- Statutory Accounts
- HMRC Enquiries
- Self Assessment
- CGT
- Valuations

**Jon Dennis FCA**  
01635 783 000 [jon@red76tax.com](mailto:jon@red76tax.com) [red76tax.com](http://red76tax.com)



# East Woodhay Women's Institute

Our WI meeting in January was a discussion, led by our WI advisor, on the 2024 Resolutions which are as follows :

- Dental health matters (chronic shortage of NHS dentists)
- Impact of poor housing and effect on human health and quality of life
- Say NO to gambling advertising, a global problem
- Improving outcomes for women in prison, in particular pregnant women and women with children.

Votes will be taken forward and one of these issues will become the 2024 Resolution at the NFWI annual meeting to be campaigned for nationally.

Last year the Resolution was Clean rivers for people and wildlife ('Water you waiting for'). Water quality in our rivers is shameful. Legally designated bathing waters must be regularly monitored for pollution. The National Federation of Women's Institutes urges its members, the wider public, local authorities and Government to make, support and promote applications for officially designated bathing sites on appropriate stretches of rivers in their area. This will be instrumental to the clean up of rivers as it has been for water quality improvement at coastal beaches.

There followed the usual tea, cake and chat.

## **IF YOU HAVE NOT BEEN TO A WI MEETING**

Do think about coming to the meeting on March 12<sup>th</sup> at 2.30pm. The speaker is a favourite, entertaining lady who delivers facts in a fun way on the History of Knitting.

*All are welcome to any meeting.*

theWI  
INSPIRING WOMEN

FALKLAND GRANGE CARE HOME

NEWBURY

A PORTHAVEN CARE HOME

## Care with compassion

See the difference Porthaven makes at Falkland Grange Care Home

Book a visit at [Porthaven.co.uk](http://Porthaven.co.uk)  
or call 01635 926970

NURSING ■ RESIDENTIAL ■ DEMENTIA

Falkland Grange Care Home  
Monks Lane, Newbury,  
Berkshire, RG14 7RW





# Woolton Hill & District

## 'The Darien Gap - Orchids, Terrorists and Kidnappings'

*a talk by Glenn Duggan*

**B**eing a fairly unadventurous person, I am in awe of those who take on extreme challenges and expeditions as part of their everyday life. Many of my family members and friends climb mountains, run marathons and go trail running, canyoning and mountain biking or cold-water swimming, but however intrepid all of these activities are, there are few that compare with botanists who travel to the most inhospitable places on earth to find undiscovered orchids and other plants. Our speaker, Glenn Duggan is one of those people. Glenn's 'orchid-hunting' expedition took him to 'The Darien Gap' between Colombia and Panama, a place renowned for extreme criminal activity related to drug trafficking, including kidnappings, and still only accessible 'on foot' or by 'Segway' along narrow tracks. An armed guard is advisable!

'The Darien Gap' is a place the size of Ireland, of remote rainforest with dense canopy, daily rainfall, extreme humidity, temperatures of a steady 30 degrees, 25 species of venomous snakes, jaguar, disease-carrying insects and spiders whose bite can

kill. Even some of the plants are poisonous! But 'orchid hunters' are undeterred as they search for previously 'undiscovered' species, of which there are over 28,000 worldwide. The most desired and searched for orchid in 'The Darien Gap' is a new member of the 'Stanhopea' family whose flowers are fragrant for only three days to attract bees. Orchids have a symbiotic relationship with their insect and bird pollinators who are attracted to the flowers by their perfume, symmetry and colour. Each species of pollinator will only visit orchids in one species and sometimes reaching the nectar is problematic. An example of this is the Morgan's Sphinx moth which has a foot-long proboscis to reach the nectar at the bottom of the flower of an orchid found in Madagascar, the *Angraecum sesquipedale*. The moth leaves the flower covered in pollen.



# Gardeners' Club

Orchid pollen is not really dusty but is packed into tiny parcels about the size of a sesame seed with each parcel having a self-adhesive patch to help with attachment to the stigma, the female structure which receives pollen. Orchid seeds though are like dust and disperse easily. The seeds do not carry a food store and rely on a particular species of fungus for their food. Even with a million seeds expelled from each flower, it is unlikely an individual seed will find exactly the right spot to germinate. Maybe this is why orchids are so mysterious, elusive and fascinating to orchid-hunters.

But, for me, there remains a tiny question; how do orchid hunters know that they have found a new species of orchid? Increasingly the answer today lies in the genetics of the specimen. A PhD student at Kew Gardens, Leif Bersweden is doing this very thing; his research is focusing on orchid genetics.

You can find out more about his research at [www.leifbersweden.com](http://www.leifbersweden.com). If you are as fascinated as I am with orchids, you may be in time, on reading this article, to visit the orchid show at Kew which runs until 3rd March and focuses on orchids from Madagascar. Maybe you will see the orchid mentioned above. Alternatively, you could plan a visit to 'The Gamboa Rainforest Resort' next to the Panama Canal!

My photographs of orchids were taken in Thailand.



**Lorna Rains**

**TT Garden Care**  
**Private & Commercial Maintenance**  
Hedge Cutting - Lawn Care - Fencing - Small Tree Work  
Turfing - Weed Control (NPTC Qualified)  
Free estimates on request  
Trevor Thomas  
T : 07949 995658  
01635 865604  
E : [tt4gardencare@btinternet.com](mailto:tt4gardencare@btinternet.com)

Providing  
financial planning  
and wealth  
management for  
private clients  
since 1979



CHARTERED FINANCIAL ADVICE & WEALTH  
MANAGEMENT SERVICES

[www.essential-wealth.co.uk](http://www.essential-wealth.co.uk)

01488 669840 enquiries@essential-wealth.co.uk

## Airport Transfers



Professional service in luxury cars to anywhere  
in the UK for Business & Pleasure.

- Meet & Greet in the terminal, no waiting for shuttle buses
- Fully licensed, DBS enhanced checked
- Door to Door service, leave your own car at home
- Help with luggage
- Competitive prices
- All cards accepted

*'Don't drive home tired, let us drive you in comfort and style'*

Email: [glntransfers@gmail.com](mailto:glntransfers@gmail.com)

[www.gln-transfers.co.uk](http://www.gln-transfers.co.uk)

Tel: 07747 800707 or 01488 648719

*Antique Silver & Gold  
Bought, sold & valued*



*Edward, Reis Silverware,  
Ball Hill.*

*Tel. 01635 250505  
e.reis@tiscali.co.uk*



## Lock & McDermott Ltd Painters & Decorators

Public & Employers' Ins. held

*Qualified with over 30 years of experience*

*Producing High Quality Interior and Exterior Work in the Private Sector*

✉ [lynda861@btinternet.com](mailto:lynda861@btinternet.com) | ☎ 01264 363 267 | Trading Standards Approved  
Trader (CRB Checked)

# East Woodhay Charities

**W**ould you like to join us as a Trustee? We are looking to appoint a co-opted trustee to the Charities. If you are interested in your local community and keen to help people please get in touch via:

[ew.charities@gmail.com](mailto:ew.charities@gmail.com)

Trustees must either live or work in the civil parish of East Woodhay. We have two meetings a year, one in January and one in July and the main duties of the trustees are to consider application for grants and how best to use our funds. Our income comes from investments, there is no fund raising involved.

East Woodhay Charities is made up of two charities: 'Relief in Need and 'Relief in Sickness'. The charities exist to provide assistance to residents of the civil parish of East Woodhay, either in need or in sickness. All requests for assistance are treated sensitively and confidentially.

## **Grants available:**

- Winter fuel grants up to £200

*We still have funds for winter fuel grants available, if you live in the Parish and are struggling with bills please apply.*

- Book/technology grants for first year students of up to £100

*These grants are for students going off to college or university for the first time. The deadline for applications is the 30th June each year. Applications will be considered at the July meeting.*

- General Hardship grants up to £500

*These grants are for when unexpected costs arise, causing people to find themselves in very difficult circumstances. Because of the nature of these grants there is no deadline for applications. Requests will be considered either at the next scheduled meeting, or between meetings if appropriate.*

## **How to apply:**

Please complete the grant application form so that your application can be assessed. Application forms are available from:

- East Woodhay Parish Council: [www.eastwoodhay-pc.gov.uk](http://www.eastwoodhay-pc.gov.uk)
- The secretary (Sue Wren) email: [ew.charities@gmail.com](mailto:ew.charities@gmail.com)  
*or write to 83 Harwood Rise, Woolton Hill, Newbury, Berks RG20 9XZ.*
- Woolton Hill Post Office and Stores
- Woolton Hill surgery

The application form is for individuals. Requests from local organisations will continue to be considered; requests should be sent to the secretary in writing or by email.

**Sue Wren, Hon Sec**

**DON'T MISS OUT - SAVE THE DATE!**



**MONDAY 27 MAY 2024**  
2pm - 4.30pm  
Church Farm - East Woodhay - RG20 0AL



**For more information**  
[www.eastwoodhayfete.org.uk](http://www.eastwoodhayfete.org.uk)



# ST MARTIN'S GUILD FETE – Monday, 27 May 2024

WEBSITE: [www.eastwoodhayfete.org.uk](http://www.eastwoodhayfete.org.uk)

This year St Martin's Guild Fete will be held at Church Farm, on Monday, 27 May with parking in the field opposite the gate to Church Farm, RG20 0AL.

**All the money raised is kept within the Parish. Our aim is to make as much profit as possible.**

Last year the funds raised from the Fete went towards the upkeep of St Martin's Church, as well as to St Martin's School, East Woodhay Village Hall, East Woodhay Silver Band, East Woodhay W.I., the Beavers and Cubs as well as sports groups such as the Woolton Hill Argyle FC.

**St Martin's Guild also bought two benches to commemorate the King's Coronation and these are positioned in East End and by St Martin's Church.**

As always, this is our usual reminder and plea for help to everybody.

If you would be interested in getting involved, helping or even just providing a contribution, do contact me or any of the individual stallholders. You will be welcomed with open arms!

Below is a list of this year's stallholders and what you can donate to help them. Donations can be given to the individual stall holders, ideally at least a week before the Fete:

<b>Cakes</b>	Freshly baked cakes, buns, fudge	<b>Rhona Everard</b>	<b>253516</b>
<b>Plants</b>	When you are picking out your annuals and dividing your plants, do give us your leftovers. Sarah will also be doing advance sales from her home (Gore End House) during May	<b>Sarah Porter</b>	<b>254609</b>
<b>Granny's Attic</b>	Newer and vintage items - china, glass and silverware, unwanted gifts and quality items for the home. No electrical items - thank you Drop off or collection.	<b>Anne Aston</b>	<b>0779 483771</b>
<b>Artisans</b>	Any beautiful fabrics for our wonderful sewing team	<b>Anne Aston</b>	<b>0779 483771</b>
<b>Raffle</b>	Prizes including cash	<b>Jonathan H</b>	<b>253367</b>
<b>Tombola</b>	Bottles, bottles and more bottles	<b>Charlotte Wilson</b>	<b>253573</b>
<b>Teas</b>	Freshly baked cakes and biscuits	<b>Sarah Ede</b>	<b>253205</b>
<b>Games</b>	Manpower	<b>Sarah L</b>	<b>255293</b>
<b>Books</b>	Children's books and two year old paperbacks only	<b>Jenny Sanders</b>	<b>254839</b>

We will be setting up the Fete on **Sunday, 26 May** and will welcome anyone who would like to come and put up tents and collect tables and chairs. Your help will be much appreciated.

**PLEASE NOTE THAT THE SETTING UP TIME IS 4.00pm at Church Farm.  
Setting up will continue on Monday, 27 May from 10am.**

Please email [info@eastwoodhayfete.org.uk](mailto:info@eastwoodhayfete.org.uk) or call Sarah Leventhorpe (255293) if you can help.

This Fete is a community event and everyone is welcome.

East Woodhay & Highclere  
Neighbourcare

Do you need transport to a  
medical appointment ?

Call our friendly local team  
of volunteers on

**01635 745600**

[ewhneighbourcare.org.uk](http://ewhneighbourcare.org.uk)



Part of the Good  
Neighbours Network

# MARIO'S PLUMBING

**25 years' experience**

- gas/oil boiler servicing and replacements
- power flushing
- central heating and general plumbing

GAS-SAFE registered

Telephone Mario  
**07967123819**

## SHAPE UP YOUR WEEK

Burghclere Hall

**Monday** **Hone 'N' Tone**  
Beginners / Interm.

**Body Blast!** 6.45-7.30pm.  
Suits all levels (€6.00)  
7.45-8.45pm. (€6.00)

**Tuesday Super Sweaty  
Step!**

Help achieve your fitness goal. 7.30-8.30pm.  
(€6.00)

**Thursday HITT!**

Torch calories with this energetic class 7.30-8.30pm.  
(€6.00)

Fully Qualified Instructor, Sally

**01635 278680**

# Black Fox Chimney Sweeping

Clean, professional service

Fully insured and DBS Checked

Sweeping certificates provided

All types of chimney and appliance

Nest removals

Stove repairs and maintenance

Call: **073 873 88 999**

Email: [info@blackfoxsweep.co.uk](mailto:info@blackfoxsweep.co.uk)

Web: [www.blackfoxsweep.co.uk](http://www.blackfoxsweep.co.uk)

## Woodhay Walkers

**W**e have been on some great walks even though it's winter, and despite there being a lot of rain we have managed to find accessible walks away from roads.

This photo of the group was from a lovely circular walk from the Royal Oak in Echchinswell.

The area is so beautiful and with spring now here we can experience the wonderful bright flowers of the area. This picture of snowdrops was taken in East End, on the bridleway alongside Stargroves. One of our other walks.

We now look forward to enjoying primroses, daffodils, tree blossom and newly born lambs in fields.

Just come along and join us at 10.30am on a Friday morning to enjoy the fresh air and a chat. Do remember to wear suitable footwear as it tends to be a muddier time of the year.

Please see the Woolton Hill website for more detail.

Our plans for February are as below but please email [woodhaywalkers@gmail.com](mailto:woodhaywalkers@gmail.com) if you are intending to join us as there may need to be some last minute changes given weather conditions.

- *Friday 23rd Feb is a 3.5 mile walk from Carpenters Arms Burghclere*
- *Friday 1st Mar is a 3 mile walk from Woolton Hill Church Hall*
- *Friday 8th Mar is up to 4 miles from East Woodhay Village Hall*
- *Friday 15th Mar is a 4 miles from Woolton Hill Church Hall*
- *Friday 22nd Mar is up to 4 miles from Downgate Pub, Hungerford*
- *Friday 29th Mar is a 4 mile walk from East Woodhay Village Hall*

## Quiz in February

Unfortunately, this was cancelled due to lack of numbers.



**Mark Rand, Chair EWS**  
**[eastwoodhaysociety@gmail.com](mailto:eastwoodhaysociety@gmail.com)**  
**Website: [www.wooltonhill.com](http://www.wooltonhill.com)**  
**Telephone: 250898**

Experienced, qualified

## TUTORS

English, Mathematics

Sciences, Languages

History, Computing

English as a foreign language

All ages, all levels

On-line lessons available

**telephone 01635 253942**

**email: susan.trinder@googlemail.com**

audrey robinson  
garden design



Professional, experienced  
and reliable

Garden Design

Border Design

Border Maintenance

01264 738580

07920 425704

[www.audreyrobinsongardendesign.co.uk](http://www.audreyrobinsongardendesign.co.uk)

## M.W. SUTTON

Roofing Specialists  
3 Byeways, Highclere

*Family business established 1972*

Contact Jason Sutton  
for free quotations:

Mobile 07770 626230

Home 01635 253951

[suttonroofing@yahoo.co.uk](mailto:suttonroofing@yahoo.co.uk)

Fully insured to carry out  
all your roofing needs



**A D CARPENTRY & BUILDING**

- Joinery
- Built-in storage
- Doors and windows
- First and second fix
- Rotten wood
- Refurbishments

Free estimates, competitive prices -  
call Andrew **07979 455903**

# East Woodhay Village Hall



We are lucky to be able to enjoy a local legacy resource put in place by our predecessors in the East Woodhay community in the form of our Village Hall. The land on which East Woodhay Village Hall sits was gifted to the community in 1938 and the hall built on it shortly thereafter. Since then it has been in regular use, supported by local groups including the scouts, cubs, beavers, the WI, the flower show, short mat bowls, all sorts of yoga and pilates classes and of course has also hosted lots of wedding parties, birthday, anniversary and celebration gatherings.

Sadly its regular users are diminishing and we are in need of a long term 'renter' - those of you who know it, will recall there used to be a children's play group there for many years which provided the hall with a regular income. In more recent times, the play cafe operated from there also offering some amazing Sunday lunches, but sadly this has closed.

Without such regular income it will be hard to keep the hall going. We have a proactive and energetic new team of volunteers who are trying all sorts of new ways to gain the hall regular income. They are also applying for various grants to give the hall a refurbishment / makeover.

## **What can you do to help?**

Please make sure you know where this lovely hall is located within our rural area. Consider it for your own parties, gatherings, receptions.....there is also a good meeting room at the back of the hall - ideal for those working from home who would like a change. Mention it to any of your own contacts who are looking for a venue.

We are also launching a monthly '100s-Club' lottery to provide some extra income and that will conduct a prize draw on a monthly basis. If enough members of the community join the Club, we aim to conduct the first draw at the of January.

Without more support the future of the hall is at risk - please help us in any way you can by raising its profile, telling your friends about it or come talk to us about running a small business from there. We would love to hear from you.



## Pressurized hot water system?

*Megaflo, Ozo, Ariston, Dimplex, Heatrae-Sadia, Tribune, Santon, Gledhill etc  
All manufacturers recommend these systems are serviced regularly by qualified specialists*



*To book your service and ensure good safety and efficiency contact your local expert*

## Kevin Pearson Total Pressure Ltd.

*New installation a speciality.*

07971 250799 01635 253975 [totalpressurelimited@gmail.com](mailto:totalpressurelimited@gmail.com)

## C & E GROUNDWORKS LTD

*Experienced Groundworks & Construction Company In Newbury & Surrounding Areas*



- Buildings • Foundations
- Paving & patio services
- Specialists in resin bond
- Turf & Astro turf • Concreting
- Fencing • Landscaping

feel free to contact us today for  
a FREE QUOTATION

*Based in Newbury C & E GROUNDWORKS LTD are a well known company that have a superb  
reputation for providing a range of groundworks from drainage to driveways.*

[cegroundworks@hotmail.co.uk](mailto:cegroundworks@hotmail.co.uk) 07500986386 01635 34601 [www.cegroundworks.co.uk](http://www.cegroundworks.co.uk)

## PAUL S. WALDEN Painter & Decorator

**For all your painting and decorating requirements**



City & Guilds Qualified  
Interior & Exterior  
25 years' experience  
all work guaranteed

**Tel no.: 07802 578934**



**T**he winter term is always busy at St. Martin's school, and this year was no exception! We were delighted to finally welcome Ofsted to our school (perhaps unusual to say delighted but we had been waiting and expecting them for a long time, so it was a relief for them to visit). They really seemed to get to know our school and what we are about and we wanted to share just a few of the inspector's comments.

*"Pupils at St Martin's readily articulate the pride they have in their school. Comments made by pupils, such as 'No matter who you are, you can belong here,' capture the inclusive nature of this school community. Pupils appreciate the small and friendly environment. They say that 'everyone knows each other'. Parents agree with the views of their children. They also value the nurturing and caring ethos that their children experience here"*

We are pleased to report that the outcome of the inspection is that St Martin's continues to be a good school.

Our open days for September 2024 starters were in November and school applications should now have been completed but we welcome anyone who would like to come and see St Martins for themselves, and late applications can still be processed through the council.

The choir at St. Martins is a wonderful and very popular extra-curricular activity which represents almost half of the school! The choir performed three times in the lead-up to Christmas which were wonderful experiences for the children. We sang at the turning-on of Newbury Christmas Lights, at the Malverley's Farm & Dining Christmas shopping event and at St Martin's church services.

Christmas term also saw our lower school put on a wonderful Nativity performance, "It's a baby!" which celebrated and retold the traditional nativity story with some very catchy songs! Our pupils love putting on a show for their parents and carers, and it's a wonderful opportunity to come together as a school. The last day of term at St. Martins is always celebrated with "Carols around the tree" where parents and carers come in to sing festive songs together before the school breaks up for Christmas. And after that, everybody is ready to head home for the Christmas holidays!

We have had a busy start to the year, and look forward to telling you all the news as we move towards Spring, Easter and then Summer!



# Learn to Draw & Paint Daytime Adult Classes



- 10 week Adult Daytime Art courses - held throughout the year
- Designed for absolute beginners to intermediates
- Warm and welcoming environment
- Pencil, Watercolour and Acrylic (as well as other mediums) every course
- Morning or Afternoon sessions available
- Held at St Marys Church, Shaw



Get in touch for more details or to book your space.  
or visit our website [www.creativeartclasses.co.uk](http://www.creativeartclasses.co.uk)  
or email [studio@creativeartclasses.co.uk](mailto:studio@creativeartclasses.co.uk)

## Woolton Hill Preschool

[www.wooltonhillpreschool.org.uk](http://www.wooltonhillpreschool.org.uk)

The Church Hall, Woolton Hill, Newbury

30 years of experience, Achieved 'Good' in 2016 Ofsted report

Secure, fun & caring environment

Friendly, loyal & Qualified staff

Strong curriculum based learning through play

French, Debutots & Talking tots at no extra cost!

Places for ages 2-5, government grant available

Breakfast club available for all children up to age 8

The staff walk the children to the Junior and Infants school

Flexible term-time hours. Mon-Thurs 8am-3pm Fri 8am- 12.30pm

Contact on: 01635 254721 Or email at: [hello@wooltonhillpreschool.org.uk](mailto:hello@wooltonhillpreschool.org.uk)



Ball Hill, Newbury  
RG20 0NG

[www.yewtreegc.co.uk](http://www.yewtreegc.co.uk)  
01635 255250



*It is just after 9 o'clock on Monday morning and the Neighbourcare telephone line rings.*

“Good Morning, Neighbourcare, How can I help?” One of our five Coordinators takes the call from Mabel\* who needs to go to an appointment at the Community Hospital the following Wednesday. Mabel lives in Highclere, is elderly, has no transport and no family living locally.

“That’s fine, Mabel. How are you today? What time is your appointment? I’ll put that onto our system and when I have a driver, I’ll give you a call back to let you know who will pick you up and what time.” The Coordinator then enters the details on to the Neighbourcare database which sends out a message listing the destination and date and time of the appointment to all of our 35 local volunteer drivers.

That morning, Henry\* opens his smart phone and looks at the list of job requests for transport that need a volunteer driver. Henry is recently retired and wants to be involved in community matters. A job to take a client from Highclere to the Community Hospital for the following Wednesday fits in with his commitments and so he responds that he would be available to do this job to the Coordinator who then forwards to him directly the details of the client and her appointment.

The Coordinator then calls Mabel. “Hello Mabel. We spoke earlier about your hospital visit on Wednesday. I have found you a driver. His name is Henry, and he will pick you up at 10.30am for your 11 o'clock appointment. He will wait at the hospital and will bring you home afterwards. There is no charge for this, but we have a scale of voluntary donations to help cover the driver’s expenses. Is this all ok?”

On Wednesday morning Henry picks up Mabel. “Good morning, Mabel. How are you today? I know we’re going to the Community Hospital but which department is your appointment at? Have you got your keys, so you don’t lock yourself out!?”



At the hospital Henry points out the café where he will wait for her and ensures that Mabel is going to the right department. He also notes what she is wearing so as to be sure he won’t miss her when she comes out and sits with a book and a coffee while waiting.

On the way home Henry and Mabel chat about her life and her far-flung family. Mabel says she will need to go to another appointment at the Surgery sometime next week. “That’s fine,” says Henry, “When you know the day and time phone as soon as you can and we will find a driver for you. That is what we are here for.”

**If you are, or know someone who could be, a ‘Mabel’ or are potentially a ‘Henry’ call East Woodhay and Highclere Neighbourcare on 01635 745600 or contact us through [www.ewhneighbourcare.org.uk](http://www.ewhneighbourcare.org.uk) to see how we can help you or you can help us.**

\* Names are fictitious.



# Letter from the Clergy

## Easter - Too good to be true?

As an erstwhile Cambridge theologian, I sometimes say to friends 'I know 120 reasons not to believe what the Christian faith teaches!' It's true (even if the number is a ballpark figure!). And yet I still believe, probably with greater clarity and conviction than in my very early 30s, when I started at Cambridge. Not to say life hasn't challenged my faith, but the heart of my faith is not only more robust than I thought, but more necessary to a healthy life than I knew when young. I look at my peer group and thank God for the overarching sense of purpose and meaning faith affords. There is often a wistfulness (if not deep regret) in folk of my age. They have lived life their way but now wonder, 'What was the point of it all?' Some change direction, thank God, and the Almighty welcomes them home. Sadly, some remain convinced to their dying day they were right not to believe. Time will tell. Or, as every gravestone should say, 'The truth will out!'

When anyone asks me about the evidence for the ultimate Christian claim Jesus 'rose again', three days after being executed by the Romans, in a foul process called 'crucifixion', a number of things come to mind. First, it wasn't the loss of blood, caused by pieces of iron being driven through a person's wrists and ankles, that killed them, but asphyxia, when they couldn't hold their body up any longer. Next, there isn't one knockdown argument to believe Jesus lived, died, and rose again; nor is there much to say to anyone who has already decided what they think! I was pleased to discover the former Oxford Professor of Philosophy, Richard Swinburne, writing in 2013, of the 'high probability that Jesus rose bodily from the dead on the first Easter Day'. No one can be 100% certain, but nor can those who don't or won't believe. When I doubt the 'good news' Jesus 'conquered' our greatest enemy, death, I ask myself, 'But, if he didn't rise from the dead, why didn't the Romans (or Jews) produce his body? And, if he didn't rise, doesn't that mean the Apostles were martyred for a lie, when they taught a 'true' faith? And what of the recorded 'appearances' of Jesus after the resurrection, at different times of day, to different groups of people, indoors and outdoors; to say nothing of the experience of a 'living' Jesus by every committed Christian? And what of the empty tomb with the grave cloths 'lying apart', from where Jesus had been laid?' The great theologian Tertullian (160-240 CE) was clear, Jesus's resurrection may be implausible, that doesn't mean it isn't true. As he wrote of his own sense of Easter hope, 'Jesus turns our sunsets into dawns'. How sad for my ageing friends who face a cold sunset when Easter faith is all about a rising Son. Happy Easter!

**Chris Hancock, Associate Priest**

# Church Services

## NORTH WEST HAMPSHIRE BENEFICE

Ashmansworth + Crux Easton + East Woodhay + Highclere + Woolton Hill  
 ...making Christ known in our communities

### Church Services MARCH 2024

**Welcome!** Service details are correct at time of publishing,  
 any necessary changes will be posted on church noticeboards.

<b>SUN 3<sup>rd</sup></b> <i>Lent 3</i>	All Together Matins Parish Communion Evensong	Woolton Hill Highclere East Woodhay Ashmansworth	9.30am 11.00am 11.00am 6.00pm
<b>SUN 10<sup>th</sup></b> <i>Mothering Sunday</i>	Holy Communion Family Communion Mothering Sunday Service Mothering Sunday Service Mothering Sunday Service <i>with BCP Communion</i>	East Woodhay Woolton Hill Ashmansworth East Woodhay Highclere	8.00am 9.30am 9.30am 11.00am 11.00am
<b>Sun 17<sup>th</sup></b> <i>Lent 5</i>	Morning Worship Holy Communion Matins Evensong	Woolton Hill Ashmansworth Highclere East Woodhay	9.30am 9.30am 11.00am 6.00pm
<b>SUN 24<sup>th</sup></b> <i>Palm Sunday</i>	<b>Palm Procession from Highclere Cricket Ground to Benefice Communion for Palm Sunday</b>	Highclere	9.45am 10.00am
<b>MON 25<sup>th</sup></b> <b>TUES 26<sup>th</sup></b> <b>WEDS 27<sup>th</sup></b>	Compline Compline Compline	East Woodhay Ashmansworth East Woodhay	8.00pm 8.00pm 8.00pm
<b>THURS 28<sup>th</sup></b> <i>Maundy Thursday</i>	Holy Communion & Watch	Woolton Hill	7.30pm
<b>FRI 29<sup>th</sup></b> <i>Good Friday</i>	Good Friday Service Family Service An Hour at the Cross At the Foot of the Cross	Crux Easton Woolton Hill Highclere East Woodhay	9.30am 11.00am 11.00am 2.00pm
<b>SUN 31<sup>st</sup></b> <i>Easter Day</i>	Festival Communion Festival Communion (BCP) Festival Communion Festival Communion Holy Communion (ext BCP)	Woolton Hill Ashmansworth Highclere East Woodhay Crux Easton	9.30am 9.30am 11.00am 11.00am 11.00am
WED 6 <sup>th</sup> March	Prayer Group Woolton Hill		10.00 am
<b>Contact number for church enquiries during the vacancy: Benefice Office 07577 423715</b>			
<b>Rector:</b> Vacancy <b>Associate Priest:</b> Revd Professor Chris Hancock 254718			
<b>Reader:</b> Suki Coe 07990 755323 <b>Reader Emeritus:</b> Rosemary Cahill 253306			



Fully qualified  
and insured

Professional, friendly and reliable with attention to detail  
coupled with great value pricing

- Tree felling
- Tree reduction
- Climbing & aerial work
- Stump removal
- Hedge reduction
- Site clearance

Contact **Nigel Smith** on 07803 034716

Email: [nigel@highcleretreeworks.co.uk](mailto:nigel@highcleretreeworks.co.uk)

Visit us at [www.highcleretreeworks.co.uk](http://www.highcleretreeworks.co.uk)

We take on small and large jobs and will happily  
discuss any individual requirements with you

Emergency work undertaken

## VG Furnishings. *The Curtain Specialists.*



01635 867804 • [www.curtainspecialists.co.uk](http://www.curtainspecialists.co.uk)



# Andy Jones

## Window Cleaning

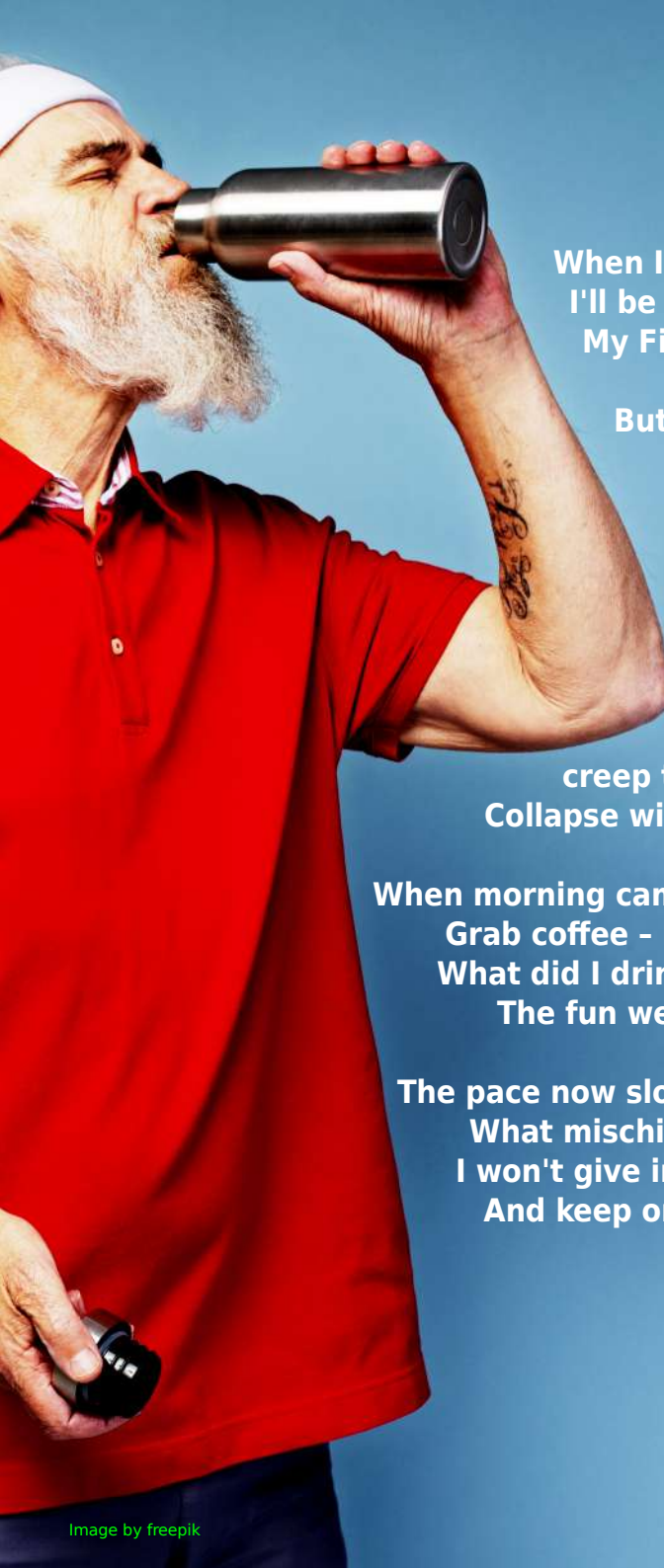
### 07876 028905

Window Cleaning - Gutter Clearance - Fascia & Soffit Cleaning  
Conservatories - Solar Panels

Call or text for a no obligation quotation on 07876 028905

[contact@andyjoneswindowcleaning.co.uk](mailto:contact@andyjoneswindowcleaning.co.uk)

[www.andyjoneswindowcleaning.co.uk](http://www.andyjoneswindowcleaning.co.uk)



## Old Age

When I get old - (so I'm told)  
I'll be a proper bore.  
My Fit Bit might say:  
*"Do more steps"*  
But this I will ignore.

Back in my teens,  
with skinny jeans  
When life  
was flying high;  
I'd stay out late;  
creep through the gate;  
Collapse with happy sigh.

When morning came - and head in pain,  
Grab coffee - black and strong.  
What did I drink? I cannot think;  
The fun went on so long!

The pace now slows - where can I go?  
What mischief can be found?  
I won't give in - just grab a Gin  
And keep on looking round.

*Moyra Harkness*



# Cookery School

Honesty Cookery School is situated in the peaceful village of North Sydmonton, a few miles from Newbury. It offers a relaxed environment, where guests can enjoy a variety of cookery and craft courses. Check out our website for information on our latest courses or to buy a gift voucher for family or friends.

[www.honestygroup.co.uk/cookery-school](http://www.honestygroup.co.uk/cookery-school)



email: [cookeryschool@honestygroup.co.uk](mailto:cookeryschool@honestygroup.co.uk)

## OVEN SOLUTIONS

*Put That Sparkle Back Into Your Oven*

- + Biodegradable deep clean
- + Ovens, hobs, extractors & BBQs
- + Repair service including elements & seals etc.
- + Non-franchise established over 18 years
- + Child and pet friendly. No fumes
- + See our reviews via website



**Peter Hudson 07733 253 563 [Oven-Solutions.co.uk](http://Oven-Solutions.co.uk) [peterhudson934@gmail.com](mailto:peterhudson934@gmail.com)**



# Pure Clean Window Cleaning

*also frames, canopies, cladding,  
conservatories, guttering & soffits*

Call Claire or Martin on 01635 523917 or 07958 207451  
email [kimble@techie.com](mailto:kimble@techie.com)



Building & Construction

Loft Conversions  
Extensions  
Kitchens  
Bathrooms  
Refurbishments  
Patios  
Double glazing

Small selection of building work we undertake

For all your building projects and free estimate

Call Jeremy

01635 278 485  
07885 985 275

[www.watermill-sounds.co.uk](http://www.watermill-sounds.co.uk)



**Aardvark**  
PROFESSIONAL OVEN AND  
CARPET CLEANING SERVICES

[AARDVARKCLEANINGSERVICESLTD.COM](http://AARDVARKCLEANINGSERVICESLTD.COM)

07783 810806

*Thyme*  
The food you would have cooked

- ❖ Let me cater at your next event.
- ❖ Menus are available for dinner parties, special celebrations, christenings, celebration of life, business and shoot lunches and many other occasions.
- ❖ Options for dining at home are also available and delivered locally.
- ❖ All dishes are freshly made, using locally sourced ingredients.

**Rhona Everard**  
07796 946664

 [thymehomecook](https://www.facebook.com/thymehomecook)

 [thyme\\_homecook](https://www.instagram.com/thyme_homecook)

 [thymehomecook@gmail.com](mailto:thymehomecook@gmail.com)



THYME\_HOMECOOK

**smarthire**  
— vehicle rental —

**01635 552200**

[SmarthireVehicleRental.co.uk](http://SmarthireVehicleRental.co.uk)

Third Street, Greenham Business Park,  
Newbury RG19 6HW

- CARS
- VANS
- MINIBUSES
- TRUCKS

# the garden carpenter

decks, fences, gates and sheds  
uncompromising quality

*for a free estimate contact Duncan Graham*

*www.thegardencarpenter.com*

*01635 552301 ~ 0780 8069390*



## BUTLERS

- Tree Surgery
- Hedge Cutting
- Stump Grinding
- Fencing
- Landscaping
- Logs, Woodchip  
& Mulch

01635 254771

[www.lopit.co.uk](http://www.lopit.co.uk)

## P J Cole Plastering & Brickwork

- ✓ Qualified and reliable local bricklayer and plasterer
- ✓ All types of plastering, floor screeds, artexing/plastering over artexed ceilings, coving, tiling, garden walls, patios and extensions undertaken
- ✓ Fully insured
- ✓ No job too small
- ✓ References available
- ✓ Quotations available upon request

*Please contact 07771 865621  
or 01635 253300 for further  
information*

## Light & Day Electrics

Part-P & 17th Edition qualified

New installations~New circuits~Rewire Consumer unit replacement  
Extend Circuits~Lighting~Garages~Outside Buildings

Smoke alarms~Fault Finding

For all your electrical needs & free estimate

Phone Jeremy 01635 278 485 07885 985 275



# Finds from a Kitchen Drawer



I really enjoyed reading last month's editorial and it reminded me of an article I wrote some time ago about the strange assortment of finds in our garden. However, not all treasures are found in outside, some hide in full view.

As any of my friends will testify, I am not a good housewife but just occasionally, I have a bit of a clear out and am amazed with what comes to light. Like many folk, we have a drawer in the kitchen where all those objects end up, you know, the

things that don't seem to have any other home so you stuff them in a drawer and forget them.

An interesting collection emerged from that drawer including an old calculator, some cable ties, a hole punch for leather, various pins, some of the safety variety and others for notice boards. There was wax for sealing envelopes, etc. and bulldogs clips, tape measures, empty film canisters and my Scout woggle.

The real finds were a 1920 shilling, which caused a bit of interest as we had certainly decimalised way before moving here and a box of paper fasteners with a price of 1/6½ on the bottom. In addition was a box of cord which reported to be an accessory for model boats costing 40p, so more recent than the paper fasteners or shilling. There were two dress pins, one with the heads of King Edward and Queen Alexandra and celebrating their coronation in 1902 and the other dated 1910 from College St Sunday School, Northampton.

Why any of these items ended up in my kitchen is a mystery but, as I don't have any other home for them, they have gone back in the drawer for another clear out in ten years or so.

**Nutmeg**

***louise benson*** mobile hairdresser

01635 38041 ANY TIME

*quality hairdressing with a personal service*

# Children's Mental Health Week

## The Schools of Woolton Hill shine a light on Children's Mental Health Week

*with daily activities for pupils, staff and parents*

Children's Mental Health Week took place between 5 to 11 February 2024, and with latest statistics from NHS Digital showing that almost a third of children are affected by mental health. The Schools of Woolton Hill has made it their mission to educate and support pupils in this area.

Every day during Children's Mental Health Week the school ran a different activity to give pupils the tools to look after their own mental health, and raise awareness about how they can help others too:

- **Monday:** *Everyone brought a scarf into school and were taught about feeling safe, using the object as a symbol of safety*
- **Tuesday:** *A feeling of calm was the focus, with children bringing in a teddy or special object into class*
- **Wednesday:** *'Express yourself' was the theme and pupils came into school wearing an outfit that showed off who they were*
- **Thursday:** *The entire school had a full day's worth of Outdoor Learning in the new outdoor classroom, where they enjoyed interacting with nature and finding out about how being outside can help with their wellbeing.*

Alongside the daily activities, parents were invited into school to take part in a Stormbreak session with their children and enjoy taking the time to sit down and play a board game together.

Stormbreak is a registered charity that focuses on improving children's mental wellbeing through physical movement. The Schools of Woolton Hill launched Stormbreak into the school in 2023, and now every day children spend 30 minutes either meditating, talking about their feelings or moving around to elevate energy and mood levels.

Paul Davies, Head Teacher at The Schools of Woolton Hill, said: "Living in a busy modern world it's important that we teach children about prioritising their health and wellbeing, but also give them the tools to do that. It's easy to talk about mental health, but we're showing our pupils how they can look after their own mental health, whether that's





through communicating with a friend, playing a game outside, or finding a quiet spot to tap into a sense of calm."

"Mental health is a huge focus for our federation, not only to support the children, but to help parents, staff and governors too."

Erin, aged 6, a pupil at The Schools of Woolton Hill, said: "I like the Stormbreak sessions

because sometimes when I'm feeling tired they help me feel more awake. My favourite sessions are when we play copycat with our friends. We take it in turns to do an action and have to copy each other."



The Schools of  
Woolton Hill

## Foundation Governor Opportunity

Make a  
difference?

Meet new  
people?

Develop  
new skills?

We have a vacancy for a **Foundation Governor**.

***Would you like to join our friendly and committed team of Governors?***

This role is linked to St Thomas' Church in Woolton Hill, and will aid the understanding of the Christian faith and values within our Schools.

Relevant training and support will be provided.

*If you are interested in finding out more, please contact:*

Fiona Ashworth, Foundation Governor

[fionaash@btconnect.com](mailto:fionaash@btconnect.com)

Tel: 07980009790

Chris McGowan, Chair of Governors

[c.mcgowan@whjs.hants.sch.uk](mailto:c.mcgowan@whjs.hants.sch.uk)



## Your local renewable energy specialist

Now installing EV chargers for solar PV

Heat Pump servicing - Mitsubishi Accredited  
PV repairs & batteries - MCS/NICEIC certified

Contact Paul Gibbons on 07791 364408  
or visit [www.greenwiresolar.co.uk](http://www.greenwiresolar.co.uk)



Greenwire Solar, October Cottage, Broadlayings, Woolton Hill, Newbury RG20 9TT



## The Oakwood Clinic, Highclere *Massage Therapy*

- DEEP TISSUE MASSAGE
- AROMATHERAPY
- HOT STONE MASSAGE
- FACIAL MASSAGE
- REFLEXOLOGY
- EAR CANDLING

*Monthly Offers. Gift Vouchers. Men by referral only.*

**Charlotte Piddington (ITEC)**  
[www.theoakwoodclinic.co.uk](http://www.theoakwoodclinic.co.uk)  
**07733442059**



## Sharon Stretton Designs Bespoke Soft Furnishings & Interior Design

- Curtains & Blinds
- Tracks & Poles
- Upholstery
- Mood Boards
- Fabrics & Trimmings
- Cushions & Headboards
- Bed Valances & Throws
- Fitting Service

Showroom:  
Unit 5 New Mills Industrial Estate,  
Post Office Road, Inkpen, Hungerford,  
Berkshire, RG17 9PU  
Tel: 01488 669267



## EWPC Statement on Watermill Bridge

**F**ollowing the decision announced last week to allow the building of 270 houses at Wash Water, East Woodhay Parish Council has issued this comment:

*"The Watermill Bridge development of 270 houses at Wash Water, was originally rejected by Basingstoke and Deane Borough Council but the developer appealed the decision. The appeal hearing, chaired by an independent Inspector, was held in December. Unfortunately the Inspector has over turned the BDBC decision and has approved the full development.*

*East Woodhay Parish Council and our Ward Councillors are angered and frustrated by this decision. The Inspector has effectively driven a coach and horses through the Neighbourhood Plan and totally ignored the democratic views of the local community. The Plan only went through referendum a year ago and was supported by the community with a majority of over 90%. The decision also disregards all the detailed evidence that was given to the hearing that this was not the right place for this development. This evidence was put forward to the hearing by three parish councils (EWPC, Highclere PC and Enborne PC), BDBC, West Berks and members of the community.*

*This is an awful decision and will have a profound negative impact on all three parishes.*

*The views of the PC and Ward Councillors have been escalated to our local MP Kit Malthouse and to the Minister of Levelling Up, Michael Gove. BDBC are also reviewing the appeal decision in detail."*

## LINO-PRINTING WORKSHOP

**Date: 9th March Time: 10am-4pm Price: £80.00 inc. lunch & materials**



Lucy de Albuquerque is offering a fun day of linoprinting with guest tutor Karen Carter. No experience needed.

Refreshments and light lunch included (vegetarians catered for - please bring own lunch if you have other requirements)

Venue: Old Plough Studio, North End, RG20 0AY

Contact: [lucydea16@gmail.com](mailto:lucydea16@gmail.com) or 07780 907300

Cancellation policy: We reserve the right to cancel due to low enrolments - full refunds will be given.No refunds for student cancellations within 1 week of start date.

# RJ Lampard & Company Ltd

*A family run business Est 1976*



- Specialist Drainage & Ditching Works
- Road Repairs and Road Construction
- Civil Engineering Works - Concreting etc
- Own fleet of plant and machinery
- Fully qualified and experienced operatives

*For further information please call:-*

**01635 253137 / 07768 201370 or email: [rj@rjlampard.co.uk](mailto:rj@rjlampard.co.uk)**

## A H Pet Services

Angela Hutchins, Hatt Common

Reliable, friendly care for all your animals,  
experienced with dogs and horses



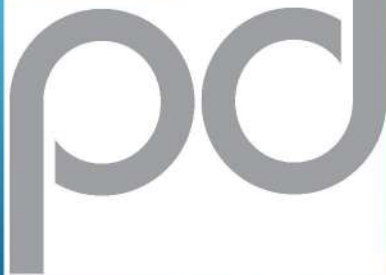
**Dog Walking and  
Pop in daily care for all pets**

Fully insured, Dog first aid course  
certificate

Individual service, only dogs from the  
same household walked together

**Call or text Angie on  
07733 298771**

**PROPERTY DESIGN STUDIO  
ESTABLISHED 2012**



**INSTAGRAM - [pd\\_studio\\_ltd](https://www.instagram.com/pd_studio_ltd)  
[www.pdstudio.co.uk](http://www.pdstudio.co.uk)**

**SMALL ARCHITECTURAL DESIGN PRACTICE**

**HOUSE EXTENSIONS  
PLANNING APPLICATIONS  
BUILDING REGULATIONS  
ARCHITECTURAL DRAWINGS**



**ASHTON GROVE  
BALL HILL  
RG20 0NL  
07917 203071  
01635 254910  
email - [nick@pdstudio.org](mailto:nick@pdstudio.org)**

### The Parish Field, Woolton Hill:

#### Biodiversity Update

This is a follow-up on the Parish Field statement in May 2021 which included: *"...the PC will retain ownership of the Parish Field and maintain it as an open protected greenspace, with no buildings, to be enjoyed by the community. We will enhance its biodiversity and will continue to let the land for agricultural use..."*.



To this end we are in the process of undertaking two biodiversity improvements.

The first was in the autumn where two small areas were selected to plant wildflower seeds. These seeds are a collection of native species specifically for overseeding and enriching existing meadows or grassland areas.

The 23 wildflowers contained are some of the most common in the British landscape and have been selected for their ease of establishment and competitiveness against grass and other plants. This seed mix consists of mainly perennial species plus a few annuals to establish a burst of colour from early summer.

For a complete list see [www.wildflower.co.uk/products/wildflower-seed-mixtures/100-wildflower-seed-mixtures/lwre-restore-enrich-100.html](http://www.wildflower.co.uk/products/wildflower-seed-mixtures/100-wildflower-seed-mixtures/lwre-restore-enrich-100.html)

During the year the growth of the wildflower plants will be monitored to enable decisions to be made about further planting within the field.

The second initiative is to plant 9 trees. The choice of trees has been done with sufficient variety to add character and diversity to the field without blocking views or light. The choices include rich sources of blossom and berries to help wildlife. The need to maintain key views has influenced the choices, but in time a degree of low (height) veiling will improve, rather than impede the views from and to the field.

All the trees will be at the south western end of the field with the three oaks near Church Road and the other six nearer to Trade Street.



# THE VILLAGE CAFÉ

Welcome to Spectrum's Virtual Café where friends and neighbours share their life experiences, passions, achievements and memories.

It's the start of the week at the Café – as ever, a little slow after the weekend. Most Monday afternoons though we provide tea and sustenance for a group who usually arrive around 3.00 pm, slightly tired, always happy and sometimes muddy. Today, just Dave Lawson and Chloe Elliott arrive for their cuppa and cake. The Café is almost empty so I join them for a chat.

I start the conversation: “Can I ask what exactly does your group do each Monday?” Dave replies, “of course. We belong to two volunteer groups working at The Chase: The Monday Club and The Cattle Watchers. And yes,” he smiles, “The Monday Club does meet each Monday! It has done so for a long time - in fact, between us, Chloe and I have volunteered for over 25 years.”



The Notice Board at The Chase tells the story of how this woodland area on the north east edge of Woolton Hill came into existence. In 1930 Sir Kenneth Swann, a noted ornithologist and Chairman of the RSPB, bought the land and set about creating a nature reserve where he could indulge his passion for the study of birds. To ensure the longevity of this wildlife haven, fourteen years later, he gifted the estate to the National Trust, an organisation which 'owns, maintains, preserves and develops woodland and wetland sites... preserving bio-diversity and habitats to encourage fauna and flora'.

He chose well and nowadays The Chase is open for us all to enjoy, thanks to the NT's 'practical management of the habitat, working with volunteers and community groups'.

“In essence,” says Chloe, “the role of The Monday Club is to maintain The Chase. As you can imagine, this is pretty physical work; for example: chopping trees, clearing streams and ditches, repairing pathways, mending fences. A vast area covering 143 acres, it is really important to prioritise our work. The animals' welfare, their safety and the safety of visitors is paramount. So that means constant checking of the animals, fencing, pathways and trees.”







Chloe adds, “seasons play a role too, for example, in wet weather, with the network of streams running through the woodland, managing the flow is imperative. We work closely with the NT: each week a ranger physically works with us and helps us to prioritise.”

For a number of years, cattle have been grazing freely at The Chase, studiously ignoring visitors as they walk by. The cattle were introduced to help maintain the area through conservation grazing – a strategy which provides three main benefits: the regeneration of ground flora and fungi, control of unwanted growth and habitat improvement for invertebrates and ground nesting birds.

“The cattle are a Shetland breed, owned by the Hampshire and Isle of Wight Wildlife Trust and chosen for their docility,” explains Dave. “Committed to conservation grazing, the Wildlife Trust provides herds of cattle to various sites throughout the county. The cattle at The Chase usually number between 3 and 10 steers.”

He continues, “The Cattle Watchers are a group of around seven volunteers and between them they ensure that once a day all the cattle are counted and visually checked. It doesn't stop there though,” laughs Dave, “all the fencing has to be inspected too – that is nearly 2000 posts around the two mile circumference!”



I ask Chloe if The Cattle Watchers had experienced any incidents with the cattle. “The most memorable,” she tells me, “was one morning after a heavy storm. A large tree had come crashing down through part of the perimeter fence. When we arrived to deal with it – there was the whole herd of cattle just standing there, staring at the large gap. We couldn't believe they were all still there!”

It is clear that the volunteers are a pretty dedicated group. I asked Dave and Chloe what drew them to volunteering at The Chase. They both agreed that they wanted to give something back to the community. “To be able to do so locally,” Dave adds, “and in such a beautiful location was really a bonus.”



## Megan @ Barking Boutique



Professional Dog Grooming

**Patient and Caring service  
for all breeds**

Clipping, Hand stripping, Scissoring,  
De-Matting, Bathing, Nail & Ear care

**Megan Kemp – 07551508398**  
[megankempgrooming@yahoo.com](mailto:megankempgrooming@yahoo.com)

Windfield House, 3 Byeways, Highclere,  
Berkshire, RG20 9PA

## Poetry? Prose on Steroids!

**If you enjoy a good poem, why not  
join us at**

### **Highclere Poetry Group**

Wednesday, March 27th at 7.30pm  
Brick Kiln Cottage, Hollington Lane  
Woolton Hill, RG20 9XX

We're a friendly, informal group - bring a  
favourite poem or two to read (or have  
read), anything from a limerick to T.S  
Eliot, or just come along to listen. No  
need to book, though it would be helpful  
to let us know if you are coming.

**Wine and refreshments provided.**

**Entry is free, but donations (£5  
suggested) welcome. On-site  
parking.**

what3words:

[gurgling.multiply.magnetic](https://www.what3words.com/gurgling.multiply.magnetic)

Contact Don Crerar: 07813 170929  
[doncrerar9@gmail.com](mailto:doncrerar9@gmail.com)

## Handy4Jobs

- Painting Decorating & Tiling
- Kitchen & Bathroom Fitting
- All aspects of Gardening & Fencing
- Window Cleaning, Facias & Guttering



**General DIY & Gardening ~ Wayne Murkett, Handyman**  
07796813580 ~ 01635 31016 ~ 07796950639

WOOLTON HILL



VILLAGE MARKET

**Saturday 25th April - 1pm**

**Saturday 22nd June - 1pm**

**The Woolton Hill and Highclere Market is an event that is run to  
support several charities throughout the year.**

**Each tearoom at the event is for a different charity and the Market  
charity of the year for 2024 is Newbury Speakability.**

**Find us at: Thorngrove School,  
The Mount, Highclere, RG20 9PS**

***This event kindly sponsored by:***





Chloe agrees, “I love that I can watch nature whilst doing something useful for the local community and it’s great to be out and about with like-minded people. I can be digging a ditch, taking a moment out to stretch my back and there, 20ft away is a deer watching me. It’s quite magical.”

Dave adds, “I actually enjoy the manual work too - even repairing the boardwalk, although it is a little like painting the Forth Bridge!”



“I think it is fair to say that all of us share a passion for our working environment at The Chase,” Chloe concludes. “The diverse variety of wildlife we experience is amazing, from the Little Egret watching us work on the edge of the lake, to spotting butterflies such as the Silver-Washed Fritillary, Small Copper Common Blue, and White Admiral. And don’t forget,” laughs Chloe, “we all think it’s a great workout!”

It’s time for Dave and Chloe to go and I have one final question. “What do you imagine Sir Kenneth Swann would think of the nature reserve now?” Chloe replies: “he would certainly still identify the various areas of woodland such as beech, oak, conifer and specimen trees which were planted. The number and types of birds and butterflies found there today would be particularly pleasing to him.”

Dave continues, “there have, of course, been changes – the introduction of cattle, for instance. Though, back in his day ‘commoning cattle’ were regularly used so he would understand the benefits that cattle bring to The Chase. I think he would be very appreciative of the continuous work and commitment of the National Trust and volunteer groups. It would be clear to him that we all share and uphold his vision.”

I bid them farewell and close the door at the end of another day at the Café. There’s time now to sit down and reflect on their story: how the work, passion and commitment of volunteers such as The Monday Group and Cattle Watchers enables our village community to enjoy the walkways and wildlife found within The Chase. Lucky us.

If you would like to get involved with the National Trust as a volunteer, please contact [nationaltrust.org.uk/volunteer](http://nationaltrust.org.uk/volunteer).

Do you have a story you would like to share?  
Then please get in touch with the Café Proprietor.  
Hilary Hainge: [hilaryhainge@gmail.com](mailto:hilaryhainge@gmail.com)





Highclere Osteopathy

**Sara Winchcombe Registered Osteopath**

Neck, back, any joint pain and sports injuries

**07748 185 713**

[sara@highclereosteopathy.co.uk](mailto:sara@highclereosteopathy.co.uk)

[www.highclereosteopathy.co.uk](http://www.highclereosteopathy.co.uk)

## Redlands Property Services Ltd

*Specialist in All Aspects of Oil Fired Heating and Plumbing*

New Boiler Installations, Servicing, Breakdowns, Oil Tank Replacements

Underfloor Heating, Mains Pressure Hot Water Cylinders Installations

All Work Guaranteed/Free Quotes

*Please call : James Mead*

OFTEC Registered Company C8170

Tel 01189 810 310 / 01635 282 172 Mob 07795 063 067

[www.rpsllp.co.uk](http://www.rpsllp.co.uk) email [boilersupport@rpsllp.co.uk](mailto:boilersupport@rpsllp.co.uk)



## Wonders with Wood

Hardy's Custom-Made Carpentry & Joinery

Chris Hardy  
Bruan Road  
Newbury

07872124367  
[chris.hardy72@gmail.com](mailto:chris.hardy72@gmail.com)

# Nature Sketchbook

**M**arch many-weathers is here. Although, the first month of meteorological spring, March is such an unresolved month, sometimes clinging on to freezing conditions and snow, unsure whether or when to allow the slow warm fingers of spring to get a hold.

It is nevertheless a joyful month with spring flowers ignoring the meteorological hesitancy, harnessing the sunshine to bring us verges of yellow primroses, cowslips, celandines, dandelions and narcissi/ daffodils.

Where there are flowers, there are usually butterflies. In March we begin to see them emerge and arrive. Red admiral butterflies typically migrated from North Africa and are seen from spring onwards. In 2023, there was a 400% increase in their UK population. Experts suggest this may be



due to the species now overwintering here rather than migrating, as a result of warmer temperatures associated with climate change.

Many of our early spring flowers are yellow as early pollinators, mainly insects, are attracted to the colour which appears as ultra-violet blue to them.

And it is attraction which brings us to the final association with March, and idiomatic mad March hares. I have seen hares in West Berkshire but not engaged in the boxing behaviour which inspired the phrase. This is a tale of unrequited ardour with male buck hares pursuing female doe hares in the hope of mating and then, it seems, taking it too far

The unimpressed doe will demonstrate her lack of interest in dramatic fashion by turning on the buck and thumping him, initiating the boxing when fur may fly!

**Helen**



*Helen Grimbleby is a West Berks/North Hants based artist who is inspired by the natural world's changing seasons. After exploring outside, she enjoys writing and illustrating her Nature Sketchbook and painting larger landscapes at her home studio (@burbleartstudios).*

The Friendly

[www.friendlyoilservice.com](http://www.friendlyoilservice.com)

# Oil Boiler Service Ltd

Fully qualified and insured  
oil boiler service & repair specialists

Simon, Nick & Paul

**01635 282992**



*Thousands of different hardy trees, shrubs, herbaceous perennials, roses, conifers, fruit, climbers, ferns and grasses are always available.*

*A family run business. Most of our stock is produced on site and we are happy to help you find just what you are looking for.*

[enquiries@penwoodnurseries.co.uk](mailto:enquiries@penwoodnurseries.co.uk) [www.penwoodnurseries.co.uk](http://www.penwoodnurseries.co.uk)

The Drove, Penwood, Newbury RG20 9EW

01635 254366

**KEITH LAWRENCE**

KITCHEN BEDROOM & BATHROOM INSTALLATIONS



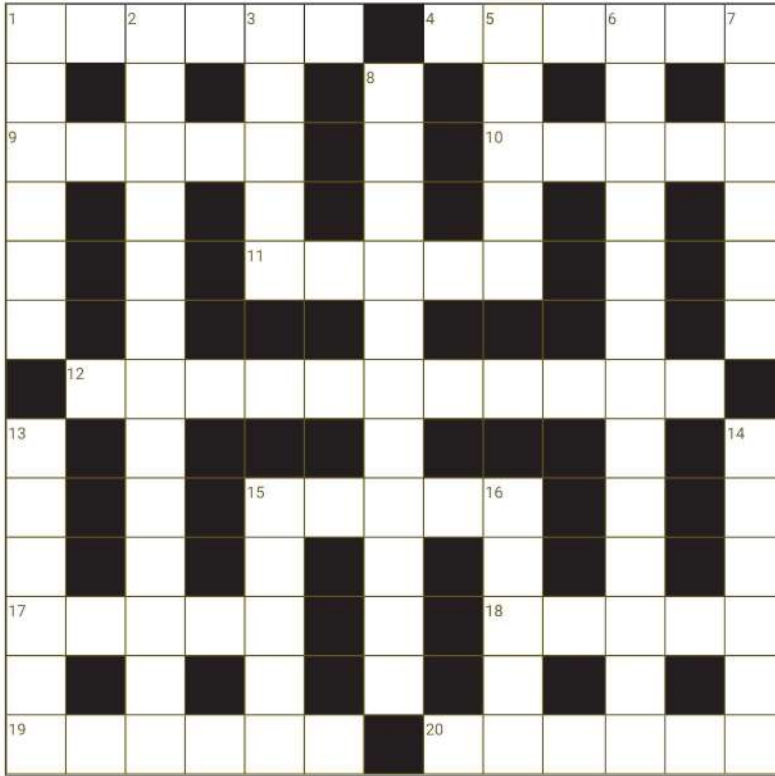
*Planning to Completion  
Traditional & Contemporary*

FREE QUOTATIONS 01488 608789

3 Ermin Street, Stockcross, Berkshire RG20 8LG

[www.lawrenceinstallations.co.uk](http://www.lawrenceinstallations.co.uk) 01488 608789





Answers crossword no 252

Across: 1 Bishop, 4 Albion, 9 Korma, 10 Nacho, 11 Skein, 12 Stallholder 15 Slack, 17 Ladle, 18 Tenth, 19 Trying, 20 Shrewd  
Down: 1 Bakery, 2 Shrove Tuesday, 3 Opals, 5 Linen, 6 Inconvenience, 7 Noodle, 8 Level-headed, 13 Violet, 14 Method, 15 Stern, 16 Ketch

### Across

1. Type of dictionary could be carried around in this (6)
4. Note anger when in peril (6)
9. Turns out the alien had fangs (5)
10. Impossible to stay upright as he travels along winding lanes (5)
11. Badly sold, right in the middle of second chamber (5)
12. Only bats tie in and refuse to take any other direction (11)
15. March spoils ability to delight (5)
17. How to host a party for a plant (5)
18. Settle quietly in nest as there is nothing left (5)
19. Plain to see him limp badly inside empty store (6)
20. Kindly sets my test in an orderly manner (6)

### Down

1. Listen, take golf strike on knee at the start of boat race (6)
2. Fruity girl will bloom on ship to Japan to be seen at its best (6,7)
3. He let woman wander around (5)
5. A last look round for a book of maps (5)
6. Quilt range Don described with extravagant language designed to impress (13)
7. Artisan crust I chose to look rural (6)
8. Could customer be canonized? Certainly David could this month. (6,5)
13. Could the GI's enter the boat race? (6)
14. Old queen abandoned customer, as was her habit (6)
15. Try to get back in good books with swimming stroke (5)
16. Overly sentimental vegetables perhaps, especially with fish and chips (5)

# Directory of Local Organisations

## 24hr Emergency Numbers

Thames Water.....	0845 9200 888
Southern Water (supply).....	01273 606766
Southern Electric.....	105 or 08000727282

**Arbor Flora Group**.....Secretary: Diana Durkin.....07980 520044

## Basingstoke & Deane Borough Council

Member: Graham Falconer.....cldr.graham.falconer@basingstoke.gov.uk .253144

## Churches

East Woodhay, St. Martin's.....	www.stmartins.church
Churchwardens.....Richard Twallin.....	253354
.....Andrew Colville.....	254017
Woolton Hill, St. Thomas.....	www.wooltonhill.com/churches
Churchwardens.....Chris Vane.....	253707
.....Bridget Wheeler.....	250729

## Defibrillators

Schools:.....	St. Martin's Primary, East End..Woolton Hill Junior School
Halls:.....	East Woodhay Village Hall.....Woolton Hill Church Hall
Other:.....	Rampant Cat Public House

**Doctors' Surgery Woolton Hill**.....253324

Patient Participation.....Rosemary Cahill.....253306

**Ducklings**.....Fiona Morgan.....42080

**East Woodhay & Highclere Neighbourcare**.....01635 745600

For transport to medical appointments.....www.ewhneighbourcare.org.uk

**East Woodhay Charities**.....Secretary: Susan Wren.....254875

**East Woodhay Cricket Club**.....Contact: Adrian Batchelor.....07803 519765

**East Woodhay Flower & Produce Show**.....254114

.....www.eastwoodhayflowershow.co.uk

**East Woodhay Football Club**.....Chairman: Alan Jones.....254024

## East Woodhay Footnotes Mens Singing Group

Organiser: Peter Stanley.....07467 572341

**East Woodhay Local History Society**. Secretary: Christine Dalton, 07880 628114

**East Woodhay Parish Council**.....www.eastwoodhay-pc.gov.uk

Amy White (Clerk).....clerk@eastwoodhay-pc.gov.uk.....07855 275336

Paul Hurst (Chair).....paul.hurst@eastwoodhay-pc.gov.uk.....254363

Karen Titcomb (VC).....karen.titcomb@eastwoodhay-pc.gov.uk...07974 011065

Susan Cooper.....susan.cooper@eastwoodhay-pc.gov.uk.....254149

Graham Dick.....graham.dick@eastwoodhay-pc.gov.uk.....255372

Martin Hainge.....martin.hainge@eastwoodhay-pc.gov.uk.....255793

Mark Rand.....mark.rand@eastwoodhay-pc.gov.uk.....250898

Denys Blakeway.....denys.blakeway@eastwoodhay-pc.gov.uk.....255175



# Directory of Local Organisations

## East Woodhay Parish Council (cont.)

Simon Bowden.....simon.bowden@eastwoodhay-pc.gov.uk  
 Rose Donoghue.....rose.donoghue@eastwoodhay-pc.gov.uk  
 Carie Roots.....carie.roots@eastwoodhay-pc.gov.uk

**EW Short Mat Bowls Club**.....Contact: Cathy Neller.....253467

**East Woodhay Silver Band**.....Contact: Rosemary Gittins.....07917 522180

**East Woodhay Society**.....Chair: Mark Rand.....250898  
 www.wooltonhill.com/ews.....eastwoodhaysociety@gmail.com

**EW Twinning Association**.....Secretary: Helen Allen.....250776

**East Woodhay Village Hall**.....ewvillagehallbookings@gmail.com

**East Woodhay W.I.**.....Secretary: Pat Gibbs.....07831 669220

**Hampshire County Council**.....Member: Tom Thacker.....01962 771863

**Highclere Film Club**.....Secretary: Chris Martin.....253461

**Highclere Evergreens**.....Leader: Mrs. V. Burge.....864584

**Litter Warden**.....Litterwarden@eastwoodhay-pc.gov.uk

**MP - Kit Malthouse**.....01264 401401  
 2 Church Close, Andover, SP10 1DP.....kit.malthouse.mp@parliament.uk

## Neighbourhood Watch

Woolton Hill.....*vacant*  
 North End.....*vacant*

**Newbury Chamber Choir**.....info@newburychamberchoir.co.uk

**Newbury Weekly News Correspondant:** Nicole Bentham.....255582

**Police**.....Hampshire Constabulary.....101  
 Beat Officer: Kieron Venn .....kieron.venn@hampshire.police.uk

**The Samaritans**.....Freephone 116 123

## Schools

The Clere School.....www.clere.school.....278372  
 Park House School.....www.parkhouseschool.org.....573911  
 .....Absence reporting.....953183  
 St. Martin's CE Primary School....www.st-martins.hants.sch.uk.....597796  
 The Schools of Woolton Hill.....www.schoolsofwooltonhill.com  
 .....St. Thomas Infants School office.....253431  
 .....Woolton Hill Junior School office.....253364

**St. Martin's Guild**.....Secretary: Sarah Leventhorpe.....255293  
 www.eastwoodhayfete.org.uk.....info@eastwoodhayfete.org.uk

# Directory of Local Organisations

<b>Spectrum Magazine</b> .....	www.wooltonhill.com/spectrum
Chair.....	Bob King.....253378
Treasurer.....	Gill Burrows.....254301
Distribution.....	Chris Vane.....253707
Advertising.....	Michael Robinson.....253004

## Editor schedule

(Jan+) Denny & Denys Blakeway..	spectrumwh@outlook.com
(Apr+) Mary Gulliver.....	mary@thegullivers.co.uk.....254567
(Jul+) Jim Hannington.....	seamusman3@gmail.com.....07895 637611
(Oct+) Avirl Cole.....	spectrumwh@outlook.com

<b>St. Thomas Handbell Ringers</b> ...Contact: Nicole Bentham.....	255582
--	--------

<b>Women In Touch</b> .....Contact: Angie Maxwell.....	253233
--	--------

<b>1st Woolton Hill Scout Group</b> ...Group Leader.....	mo.osborne@btinternet.com
Beavers.....	Alison Sellar.....wooltonhillbeavers@gmail.com
Cubs.....	Stuart Ashby.....wooltonhillcubs@gmail.com
Scouts.....	Adam Davies.....wooltonhillscouts@gmail.com

<b>Woolton Hill &amp; District Gardeners' Club</b> Contact: Nick Harcourt.....	253546
--	--------

<b>Woolton Hill Argyle FC</b> .....Jon Dennis.....	money.whafc@gmail.com
--	-----------------------

<b>Woolton Hill Church Hall</b> .....	www.wooltonhill.com/wh-hall-booking
Clifton, Tile Barn Lodge, Tile Barn.....	wooltonhillhallbookings@gmail.com

<b>Woolton Hill Pre-School</b> .....Nicola Logan.....	254721
---	--------

<b>Woolton Hill Sports Club</b> .....Alison Whitehorn.....	254391
--	--------

<b>Woolton Hill Village Market</b> .....whvm.co.....	whvmarket@gmail.com
--	---------------------

<b>Woolton Hill Website</b> .....Contact: Mark Rand.....	250898
www.wooltonhill.com.....	eastwoodhaysociety@gmail.com

## Spectrum Advert Rates

(with effect from April 2024)

Annual rates - please contact Michael Robinson: 01635 253004

For ALL local events (charity, political, etc.)

£5 per quarter page (colour or b&w)

For all commercial and professional adverts

£25 per quarter page (colour or b&w)

Invoices are issued once the publication has been sent to print.

Please note that adverts may be altered in size to fit the space available. Guidance to advertisers including sizes and file format is

available at: [www.wooltonhill.com/spectrum-guidance](http://www.wooltonhill.com/spectrum-guidance)

Subscriptions: £5 per annum

# Mown & Grown

HEDGE CUTTING • FENCING • GROUNDS MAINTENANCE

01635 745060

mownandgrownnewbury@gmail.com

www.mownandgrown.net

## Liberty Garden Buildings



[www.libertygardenbuildings.com](http://www.libertygardenbuildings.com)

Yew Tree Garden Centre,  
Ball Hill, Newbury RG20 ONG

01635 255533



GREENHOUSES  
HOME OFFICES  
GARDEN ROOMS  
ROTATING PODS  
SUMMERHOUSES  
GARDEN SHEDS



**CONTROL SERVICES**  
Pest Management & Timber Care

Wasps • Hornets • Rats • Mice • Moles  
Woodworm • Ants • Fleas • Flies • Moths  
Bed Bugs • Beetles • Cockroaches

*Domestic and Commercial*

[www.pestcontrolberkshire.com](http://www.pestcontrolberkshire.com)

01635 250 852



# MARSH fuels



*Heating Oil now available to collect in 20 litre drums*

**01635 253 253**  
**[www.marshfuels.co.uk](http://www.marshfuels.co.uk)**

H C Marsh (Newbury) Ltd, Ball Hill, Newbury, Berkshire. RG20 0PW

## **Esseborne Manor Hotel & Restaurant**

Family run business offering a warm welcome and the best food in the area.

Daily lunches with canapes & wine

A la carte dinners

7-course tasting dinners

Sunday lunches

Vintage afternoon teas



**Perfect for private functions & weddings**

Hurstbourne Tarrant SP11 0ER,  
[www.esseborne-manor.co.uk](http://www.esseborne-manor.co.uk), 01264 736 444