

# Spectrum



50p December 2023

# Editorial

This is the last month I am editing for 2023 so thanks for being patient with me.

There are some interesting nature themed articles this month, so I hope that you enjoy reading them. The day in the life of a wildlife photographer is interesting and obviously requires a lot of patience. I am not sure that I could keep very still once my feet became cold.

However, it is always worth looking up at the clouds while out walking or rain or shine from your window. The formations are so beautiful, even the grey ones as they change shape and colour every second. Such a great source of joy.

Good wishes to you all for a very happy Christmas and best wishes for a healthy, happy, and safe 2024

Avril

**Editors for January 2024, February 2024 & March 2024:**

Denny & Denys Blakeway  
email [spectrumwh@outlook.com](mailto:spectrumwh@outlook.com)

## Personal Computers

new - repairs - upgrades - data recovery - no job too small

**phone John on 01635 254102**

**[www.wooltonhill.com/spectrum](http://www.wooltonhill.com/spectrum)**

Spectrum is a monthly community magazine serving East Woodhay and Woolton Hill. It is run by a committee of volunteers and is a not for profit publication.

Reports on village activities and articles of local interest are welcomed for publication subject to the discretion of the editor. Copy should reach the editor by the seventh day of the month preceding publication and should be a maximum of 500 words. In the event of pressure for space, the editor reserves the right to reduce the length of the article while attempting to maintain the style of the writer and retaining as much content as possible.

The editorial committee accepts no responsibility for the views expressed by Spectrum contributors or for the quality of goods and services provided by advertisers in this magazine.

**The contents of this magazine are protected by copyright and nothing may be reprinted without prior permission.**

City & Guilds  
NPTC



**greentips**

TREE SURGERY

YOUR LOCAL TREE CARE SPECIALIST

- Fully Qualified and Insured
- Tree Surgery
- Planting•Pruning•Removals
- Hedge Cutting
- Stump Grinding
- Woodland Management
- Chip, Mulch & Logs for Sale

T: 01635 254712

M: 07903 259973

[www.greentipsuk.com](http://www.greentipsuk.com)

**G  
G**  
GOLD & GREY

**WISHING YOU A  
MERRY CHRISTMAS**

CURTAINS  
BLINDS  
UPHOLSTERY  
SOFT FURNISHINGS  
INTERIOR DESIGN

07795 247142

[WWW.GOLDANDGREY.UK](http://WWW.GOLDANDGREY.UK)



# Pure Clean Window Cleaning

*also frames, canopies, cladding, conservatories, guttering & soffits*

Call Claire or Martin on 01635 523917 or 07958 207451  
email [kimble@techie.com](mailto:kimble@techie.com)

**honesty**  
bakers & makers

## Cookery School

Honesty Cookery School is situated in the peaceful village of North Sydmonton, a few miles from Newbury. It offers a relaxed environment, where guests can enjoy a variety of cookery and craft courses. Check out our website for information on our latest courses or to buy a gift voucher for family or friends.

[www.honestygroup.co.uk/cookery-school](http://www.honestygroup.co.uk/cookery-school)

email: [cookeryschool@honestygroup.co.uk](mailto:cookeryschool@honestygroup.co.uk)

## Woolton Hill Post Office and Stores

Post office, Newsagent, National Lottery  
Off-Licence & General Stores

Post Office Open:  
Monday to Friday 9am-5.30pm  
Saturday 9am-12.30pm

We also hold Euros and Dollars




We also deliver newspapers in surrounding 4 miles.  
Woolton Hill Post Office & Stores  
Broadlayings  
Woolton Hill RG20 9TR  
**01635 253463**

## Diary of Events December 2023

Friday	1 <sup>st</sup>	Community Cafe	St. Thomas' Church	10-11.30am
		Woodhay Walkers	WHCH	10.30am
Monday	4 <sup>th</sup>	Evergreens	HVH	2-4pm
Wednesday	6 <sup>th</sup>	EW Short Mat Bowls	EWWH	7.30pm
Friday	8 <sup>th</sup>	Community Cafe	St. Thomas' Church	10-11.30am
		Woodhay Walkers	Thatcham Discovery Centre	10.30am
Tuesday	12 <sup>th</sup>	EW WI	EWWH	2.30pm
Wednesday	13 <sup>th</sup>	EW Short Mat Bowls	EWWH	7.30pm
Thursday	14 <sup>th</sup>	WH Gardeners Club	WHCH	7.30pm
Friday	15 <sup>th</sup>	Community Cafe	St. Thomas' Church	10-11.30am
		Woodhay Walkers	WHCH	10.30am
Tuesday	19 <sup>th</sup>	Arbor Flora	HVH	2.00pm
Wednesday	20 <sup>th</sup>	EW Short Mat Bowls	EWWH	7.30pm
Friday	22 <sup>nd</sup>	Community Cafe	St. Thomas' Church	10-11.30am
		Woodhay Walkers	EWWH	10.30am
Wednesday	27 <sup>th</sup>	Village Walk	Red House, Highclere	10.30am


**PROPERTY DESIGN STUDIO**  
ESTABLISHED 2012



INSTAGRAM – [pd\\_studio\\_ltd](https://www.instagram.com/pd_studio_ltd)  
[www.pdstudio.co.uk](http://www.pdstudio.co.uk)

**SMALL ARCHITECTURAL DESIGN PRACTICE**

- HOUSE EXTENSIONS
- PLANNING APPLICATIONS
- BUILDING REGULATIONS
- ARCHITECTURAL DRAWINGS



ASHTON GROVE  
BALL HILL  
RG20 0NL  
07917 203071  
01635 254910  
email - [nick@pdstudio.org](mailto:nick@pdstudio.org)

# ATH PLUMBING & HEATING

OFTEC Registered

- New boiler & system installations
- Mains pressure hot water cylinder -service & installation-
- Maintenance
- Insured, references available, free estimates
- Bathroom installation

*Please call Nigel Brown:*  
**01635 254787 07979718427**  
*athplumbingheating@gmail.com*

## Airport Transfers



Professional service in luxury cars to anywhere in the UK for Business & Pleasure.

- Meet & Greet in the terminal, no waiting for shuttle buses
- Fully licensed, DBS enhanced checked
- Door to Door service, leave your own car at home
- Help with luggage
- Competitive prices
- All cards accepted

*'Don't drive home tired, let us drive you in comfort and style'*

Email: [glntransfers@gmail.com](mailto:glntransfers@gmail.com)

[www.gln-transfers.co.uk](http://www.gln-transfers.co.uk)

Tel: 07747 800707 or 01488 648719



- ❖ Let me cater at your next event.
- ❖ Menus are available for dinner parties, special celebrations, christenings, celebration of life, business and shoot lunches and many other occasions.
- ❖ Options for dining at home are also available and delivered locally.
- ❖ All dishes are freshly made, using locally sourced ingredients.

**Rhona Everard**  
07796 946664

thymehomecook

thyme\_homecook

thymehomecook@gmail.com



## MARIO'S PLUMBING

**25 years' experience**

- gas/oil boiler servicing and replacements
- power flushing
- central heating and general plumbing

GAS-SAFE registered

**Telephone Mario**  
**07967123819**

Experienced, qualified

## TUTORS

English, Mathematics

Sciences, Languages

History, Computing

English as a foreign language

All ages, all levels

On-line lessons available

telephone **01635 253942**

email: [susan.trinder@googlemail.com](mailto:susan.trinder@googlemail.com)

## R. D. RUTTERFORD

### OIL FIRED BOILER MAINTENANCE

MEADOW VIEW  
BROAD LAYINGS  
WOOLTON HILL  
NEWBURY  
BERKSHIRE RG20 9TS

01635 253257

Mobile: 07771 610145



## smarthire — vehicle rental —

**01635 552200**

[SmarthireVehicleRental.co.uk](http://SmarthireVehicleRental.co.uk)

Third Street, Greenham Business Park,  
Newbury RG19 6HW

- CARS
- VANS
- MINIBUSES
- TRUCKS

## P J Cole Plastering & Brickwork

- ✓ Qualified and reliable local bricklayer and plasterer
- ✓ All types of plastering, floor screeds, artexing/plastering over artexed ceilings, coving, tiling, garden walls, patios and extensions undertaken
- ✓ Fully insured
- ✓ No job too small
- ✓ References available
- ✓ Quotations available upon request

*Please contact 07771 865621  
or 01635 253300 for further  
information*



Highclere Osteopathy

**Sara Winchcombe Registered Osteopath**

Neck, back, any joint pain and sports injuries

**07748 185 713**

sara@highclereosteopathy.co.uk

www.highclereosteopathy.co.uk

FALKLAND GRANGE CARE HOME

NEWBURY

A PORTHAVEN CARE HOME

## Care with compassion

See the difference Porthaven makes at Falkland Grange Care Home

Book a visit at [Porthaven.co.uk](http://Porthaven.co.uk)  
or call 01635 926970

NURSING ■ RESIDENTIAL ■ DEMENTIA

Falkland Grange Care Home  
Monks Lane, Newbury,  
Berkshire, RG14 7RW



## The Oakwood Clinic, Highclere *Massage Therapy*

- DEEP TISSUE MASSAGE
- FACIAL MASSAGE
- AROMATHERAPY
- REFLEXOLOGY
- HOT STONE MASSAGE
- EAR CANDLING

*Monthly Offers. Gift Vouchers. Men by referral only.*

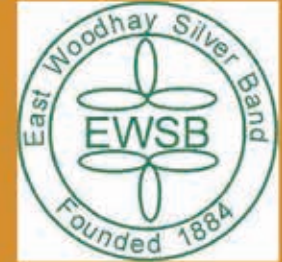
Charlotte Piddington (ITEC)  
[www.theoakwoodclinic.co.uk](http://www.theoakwoodclinic.co.uk)  
07733442059



WANT TO LEARN A BRASS INSTRUMENT?

JOIN EAST WOODHAY SILVER BAND TODAY

- IT'S FUN
- GREAT HEALTH BENEFITS
- MAKE NEW FRIENDS
- **FREE** USE OF AN INSTRUMENT
- **FREE** TUITION

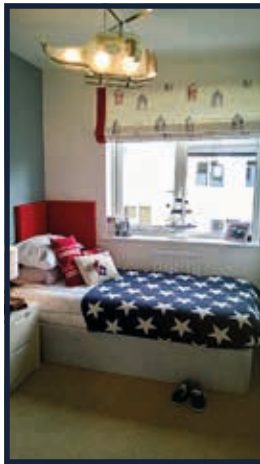


BEGINNERS, IMPROVERS AND ACCOMPLISHED PLAYERS ALL WELCOME

CONTACT KONRAD FOR MORE INFORMATION: E-MAIL: [K-FIRTH@SKY.COM](mailto:k-firth@sky.com)

MOBILE: 07979 735744 Web SITE: [WWW.EASTWOODHAYSILVERBAND.CO.UK](http://WWW.EASTWOODHAYSILVERBAND.CO.UK)

EAST WOODHAY SILVER BAND IS A REG. CHARITY NO.1164130



**Sharon Stretton Designs**  
**Bespoke Soft Furnishings  
 & Interior Design**

- Curtains & Blinds
- Tracks & Poles
- Upholstery
- Mood Boards
- Fabrics & Trimmings
- Cushions & Headboards
- Bed Valances & Throws
- Fitting Service

Showroom:  
 Unit 5 New Mills Industrial Estate,  
 Post Office Road, Inkpen, Hungerford,  
 Berkshire, RG17 9PU  
 Tel: 01488 669267



**C & E GROUNDWORKS LTD**

*Experienced Groundworks & Construction Company In Newbury & Surrounding Areas*



- Buildings • Foundations
- Paving & patio services
- Specialists in resin bond
- Turf & Astro turf • Concreting
- Fencing • Landscaping

feel free to contact us today for  
 a FREE QUOTATION

*Based in Newbury C & E GROUNDWORKS LTD are a well known company that have a superb reputation for providing a range of groundworks from drainage to driveways.*

ceggroundworks@hotmail.co.uk 07500986386 01635 34601 www.cegroundworks.co.uk

**VG Furnishings. The Curtain Specialists.**



01635 867804 • www.curtainspecialists.co.uk

**Night Time**

The Christmas story's known to all,  
 With wisemen's guiding star,  
 Which slowly moved across the sky;  
 They followed – hour by hour.

Is there a special star for you?  
 Look up, you could choose one.  
 A wishing star to bring you luck,  
 To guide and lead you on.

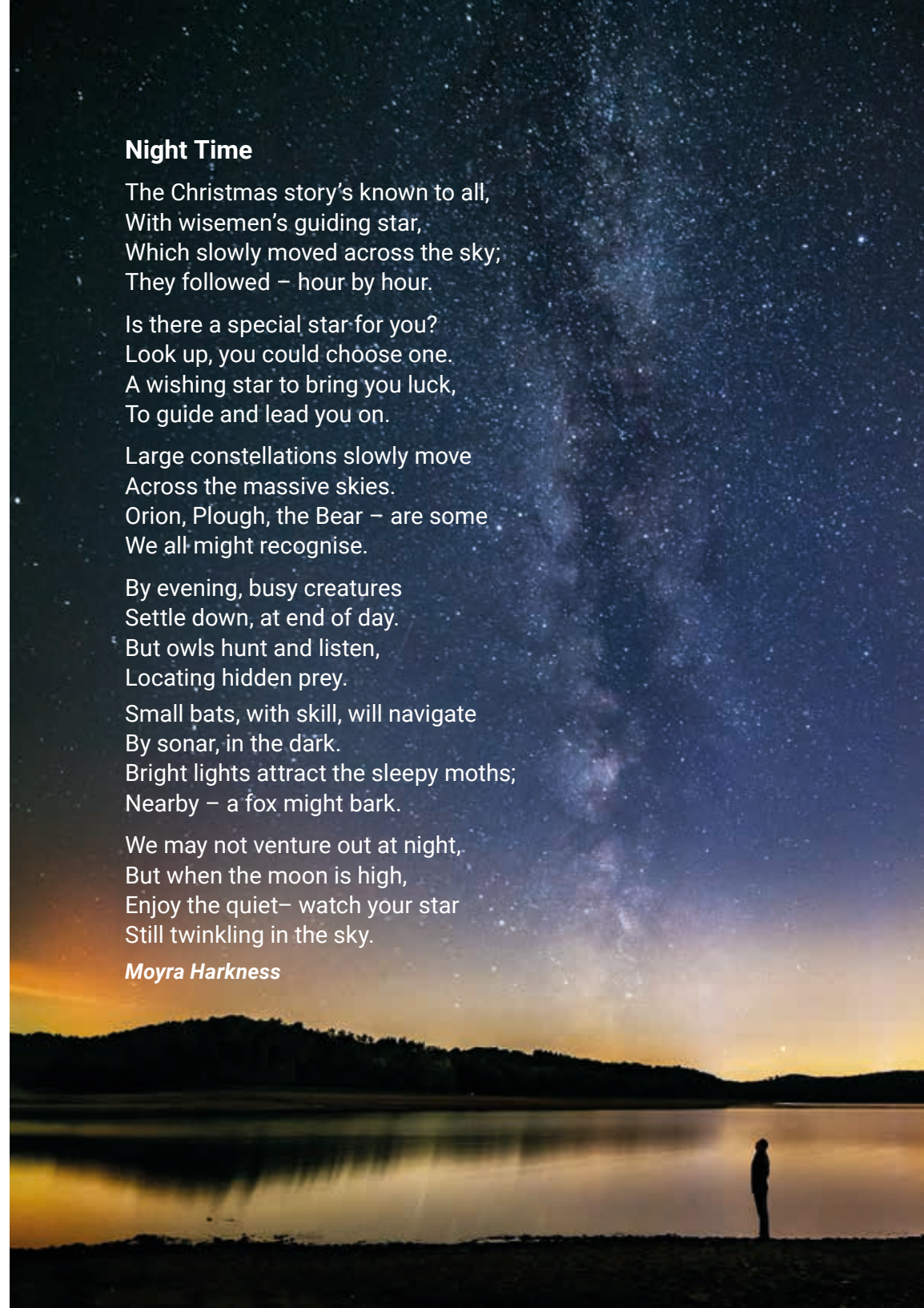
Large constellations slowly move  
 Across the massive skies.  
 Orion, Plough, the Bear – are some  
 We all might recognise.

By evening, busy creatures  
 Settle down, at end of day.  
 But owls hunt and listen,  
 Locating hidden prey.

Small bats, with skill, will navigate  
 By sonar, in the dark.  
 Bright lights attract the sleepy moths;  
 Nearby – a fox might bark.

We may not venture out at night,  
 But when the moon is high,  
 Enjoy the quiet– watch your star  
 Still twinkling in the sky.

*Moyra Harkness*





### ABOUT

Hannington & Green offer a wide range of electrical services in domestic, industrial and commercial installation, data installation, inspection and testing, and property maintenance.

### SERVICES

- Electrical Installation
  - Data Installation
  - Inspection & Testing
  - Property Maintenance
- Office Design & Partitioning
- Building Services

### CONTACT

☎ 01635 285354    ✉ info@hanningtongreen.co.uk



- Garden Maintenance
- Trees & Hedges
- Small Landscaping Projects

Call Matthew Butler :  
**07884 551 778**                      **fftrees.co.uk**  
**01635 226 429**                      **matt@fftrees.co.uk**

**TT Garden Care**  
**Private & Commercial Maintenance**  
 Hedge Cutting - Lawn Care - Fencing - Small Tree Work  
 Turfing - Weed Control (NPTC Qualified)  
 Free estimates on request  
 Trevor Thomas  
 T : 07949 995658  
 01635 865604  
 E : tt4gardencare@btinternet.com

  
**audrey robinson**  
 garden design  
 Professional, experienced  
 and reliable  
 Garden Design  
 Border Design  
 Border Maintenance  
 01264 738580  
 07920 425704  
 www.audreyrobinsongardendesign.co.uk

**M.W. SUTTON**  
**Roofing Specialists**  
 3 Byeways, Highclere  
*Family business established 1972*  
 Contact Jason Sutton  
 for free quotations:  
 Mobile 07770 626230  
 Home 01635 253951  
 suttonroofing@yahoo.co.uk  
 Fully insured to carry out  
 all your roofing needs

Providing financial planning and wealth management for private clients since 1979

CHARTERED FINANCIAL ADVICE & WEALTH MANAGEMENT SERVICES  
 www.essential-wealth.co.uk  
 01488 669840 enquiries@essential-wealth.co.uk

# Woolton Hill & District Gardeners' Club



## In Praise of Apples

Charlotte Popescu, author, cook, hen-lover and apple expert, entertained our members with a fact-filled tour of the history, mythology and nomenclature of apples at the end of October; the perfect time of year for a talk on this subject, when so many of us have apples ripening on our trees and more unusual varieties begin to appear in the shops. But where did apples begin? A Russian scientist Nikolai Vavilov traced the apple genome in 1929 to an ancient apple, *Malus sieversii* in the Tian Shan Mountains of Kazakhstan and the full genome of the apple was confirmed in 2010 using DNA testing. The first domesticated apples were brought to this country by the Romans who found apple trees growing along the Silk Roads. Realising that trees grown from pips would not grow true to the parent, they began to select bigger, tastier, sweeter varieties by grafting, a process of inserting cuttings of the chosen variety on to the rootstock of another tree.

This is how apple trees are grown to this day. At 'Brogdale', the National Fruit Collection at Faversham in Kent, you can choose a 'designer' tree with three or four chosen varieties grafted together onto one rootstock. You may be interested to know that the University of Reading is responsible for curating this living collection, grown using the most up-to-date crop management strategies using genetic analysis in the propagation and care of the trees. I

was fortunate enough to visit Brogdale in October a number of years ago and it remains one of my favourite outings, despite the long journey to Kent!

I love visiting an orchard; my most recent visit being to 'The Newt' in Somerset where they have 65 acres of apple trees for making cider. You may have tasted a sample of their cider at the Chelsea Flower Show as they are one of the main sponsors. Both orchards mentioned are commercial orchards for profit or research and have no similarity to smaller community-run sites, or a few apple trees in a garden or allotment. A plot of land in Woolton Hill has been set aside for a community orchard and I would encourage anyone interested to get involved with this project at 'Meadowbrook Orchard'. I am sure this orchard will bring many people pleasure.

Pruning in winter, the first blossom in spring, watching fruit growing and ripening in summer and autumn, taking in the scent and feel of apple bark are all delightful activities. And hopefully, there will be fruit to taste. Experienced apple growers like Charlotte and my friend Ron from The Borders have a special way of tasting apples – the apple is weighed gently in one hand, the skin examined and smelt, a sliver of apple cut using a sharp knife, flesh observed, tasted and discussed, and the name of the apple stored in the memory for the future, Ashmead's Kernel, Sturmer Pippin, Ellison's Orange, Worcester Pearmain, Beauty of Bath and many more!

Lorna Rains





# Day in the life of a Wildlife Photographer

Its 4.45am at the beginning of October, wearing camouflage clothes I set off to the hunting grounds of William the Conqueror to hunt for red deer, armed only with a camera.

The new Forest covers about 220 square miles and is the home to many species of deer including Fallow that were introduced by the Romans.

The mating season has started which is often a violent battle for the right to mate. The older established stags with their hareems of hinds will have to fend off the advances of the younger competition.

When I arrive, it's still dark but the sky is clear with a tiny amount of light from the horizon. Welcome to my office.

First, I listen. The stag's roar can be heard for up to two miles. There is the sound drowning out the early morning bird song.

My fieldcraft is essential as I want to capture these majestic animals acting naturally. Safety of the animals and myself is paramount. I wouldn't stand a chance against a 260kg stag; pumped up on testosterone, that can run up to 30mph and armed with a huge set of antlers.

Breaking cover of the forest I enter the heathland and scan the low light and mist for signs of the deer. I spot a group including stags. The light is nearly suitable for photographs to capture natural behaviour and maybe, an actual rut.

Keeping more than 100m away and armed with my long telephoto lens I make my approach.

Moving between clumps of bushes and gorse, ensuring not to silhouette myself against the rising sun & checking the wind direction I arrive at my identified spot. It is cold & my breath balloons into the morning sky, just like the stags.

Time to wait and watch. The dominant stag stands among his hinds roaring into the sky.

The smaller, younger challengers circle planning their challenge. Often, they will walk almost alongside goading the larger male. Will they rut?

I lose sight of them behind some gorse, the next thing I hear is the clash of antlers.

The fight has begun!

I wait for them to appear and there it is, the beauty of the circle of life stands before me. I capture the event and sit back immersing myself in the nature around me. The golden orb of the sun illuminates the heather, dew drips from the gorse bushes, what a stage for such a powerful show.

I leave the office for today. I've had good weather, and a spectacular scene. My last visit couldn't have been more different, pouring rain, bitter wind, and only distant sightings of deer but that occasion also provided me with some lovely memories. That's the wonder of nature.

You can contact Andy at [andy@wall2wallwildlifephotography.co.uk](mailto:andy@wall2wallwildlifephotography.co.uk) to discuss your photographic needs.



## Redlands Property Services Ltd

*Specialist in All Aspects of Oil Fired Heating and Plumbing*

New Boiler Installations, Servicing, Breakdowns, Oil Tank Replacements  
Underfloor Heating, Mains Pressure Hot Water Cylinders Installations

All Work Guaranteed/Free Quotes

*Please call : James Mead*

OFTEC Registered Company C8170

Tel 01189 810 310 / 01635 282 172 Mob 07795 063 067  
www.rpsllp.co.uk email boilersupport@rpsllp.co.uk



### Pressurized hot water system?

*Megafllo, Ozo, Ariston, Dimplex, Heatrae-Sadia, Tribune, Santon, Gledhill etc  
All manufacturers recommend these systems are serviced regularly by qualified specialists*



*To book your service and ensure good safety and efficiency contact your local expert*

**Kevin Pearson**  
**Total Pressure Ltd.**

*New installation a speciality.*

07971 250799 01635 253975 totalpressurelimited@gmail.com

**The Friendly**

[www.friendlyoilservice.com](http://www.friendlyoilservice.com)

# Oil Boiler Service Ltd

**Fully qualified and insured  
oil boiler service & repair specialists**

**Simon, Nick & Paul**

# 01635 282992



## East Woodhay Women's Institute



Our October meeting delivered an impressive collection of chocolates and sweets for sale with a very interesting talk on the history of chocolate. Also in October, the four North Hampshire WI groups met in our hall to watch a Pottery demonstration and sale from a former Aldermaston potter. At the November meeting we will have been treated to a Bollywood afternoon, details to follow. December brings our members and friends together for a Christmas party, accompanied by some members of the East Woodhay Silver Band. It promises to be cheerful afternoon of singing, tea and chat.

### Handy4Jobs

- Painting Decorating & Tiling
- Kitchen & Bathroom Fitting
- All aspects of Gardening & Fencing
- Window Cleaning, Facias & Guttering



General DIY & Gardening ~ Wayne Murkett, Handyman  
07796813580 ~ 01635 31016 ~ 07796950639

## Changes within Spectrum

Spectrum drops through the door every month, but have you ever thought how it gets to you.

You will have read the Editors contributions every month but behind the scenes there are people who look after the advertising, the money side of things and the distribution of the magazine but the clever technical bit, before it is sent to the printers is something that is not always thought of and often taken for granted.

Well not by the Spectrum committee it isn't.

John Priest has been doing this for more than ten years and has decided to hang up his keyboard and hand the task over; this will be the last edition he puts together. Stuart Ashby is picking up the reins and John has offered to support him during the handover.

John has been magnificent over the years. He has never missed an episode even when he has been away from home. He has dug out photographs to enhance articles that have been submitted and overseen the transition from a black and white magazine to the one of full colour that we have today.

On behalf of the Spectrum committee, we thank you John for your dedication and professionalism over the years. We will miss you.

Bob King  
Chairman



**OUR SURGERIES:**

Burlins Surgery, Burlins,  
East Woodhay, Newbury,  
Berkshire, RG20 0NU.

Foxhold House Surgery,  
Crookham Common,  
Thatcham,  
Berkshire, RG19 8EL



We can help you meet all your pet and equine healthcare needs, with professional and caring staff who can treat your animal at a time that suits you. Out vets offer an emergency service giving you 24 hour reassurance.

*...we're here to listen*

**24 hour phoneline: 01635 254544      [www.coachhousevets.com](http://www.coachhousevets.com)**

*Antique Silver & Gold  
Bought, sold & valued*



*Edward, Reis Silverware,  
Ball Hill.  
Tel. 01635 250505  
[e.reis@tiscali.co.uk](mailto:e.reis@tiscali.co.uk)*

# Black Fox Chimney Sweeping

Clean, professional service

Fully insured and DBS Checked

Sweeping certificates provided

All types of chimney and appliance

Nest removals

Stove repairs and maintenance

**Call: 073 873 88 999**

Email: [info@blackfoxsweep.co.uk](mailto:info@blackfoxsweep.co.uk)

Web: [www.blackfoxsweep.co.uk](http://www.blackfoxsweep.co.uk)

# the garden carpenter

decks, fences, gates and sheds  
uncompromising quality

*for a free estimate contact Duncan Graham*

[www.thegardencarpenter.com](http://www.thegardencarpenter.com)

01635 552301 ~ 0780 8069390

East Woodhay & Highclere  
Neighbourcare

**Do you need transport to a  
medical appointment ?**

**Call our friendly local team  
of volunteers on**

**01635 745600**

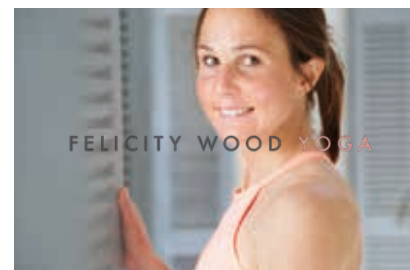
[ewhneighbourcare.org.uk](http://ewhneighbourcare.org.uk)



# BUTLERS

- Tree Surgery
- Hedge Cutting
- Stump Grinding
- Fencing
- Landscaping
- Logs, Woodchip & Mulch

**01635 254771**  
[www.lopit.co.uk](http://www.lopit.co.uk)



## YOGA IN EAST WOODHAY

GROUP & PRIVATE CLASSES

SUITABLE FOR ALL LEVELS,  
INCLUDING BEGINNERS

CONTACT FELICITY

07980 304590

[FELICITY@FELICITYWOODYOGA.COM](mailto:FELICITY@FELICITYWOODYOGA.COM)

BOOK YOUR PLACE

[FELICITYWOODYOGA.COM](http://FELICITYWOODYOGA.COM)

**FWY**

## Megan @ Barking Boutique



Professional Dog Grooming

**Patient and Caring service  
for all breeds**

**Clipping, Hand stripping, Scissoring,  
De-Matting, Bathing, Nail & Ear care**

**Megan Kemp – 07551508398**  
[megankempgrooming@yahoo.com](mailto:megankempgrooming@yahoo.com)

Windfield House, 3 Byeways, Highclere,  
Berkshire, RG20 9PA

# December Nature Notes

Helen Grimbleby is a Woolton Hill based artist who is inspired by the natural world's changing seasons. After exploring outside, she enjoys writing illustrated nature notes and painting larger landscapes at her home studio (@burbbleartstudios).

December heralds the start of meteorological winter and brings high average rainfall of 166.4 mm and cold average temperatures of 5.2C.

It brings the winter solstice when we have the longest night and the shortest day. Also, known as mid-winter, the cold, wet and dark can feel bleak for the human soul and spirit as in the Christmas carol.

Perhaps as an antidote, now is the season of celebrations that bring light, life and nature into our lives and homes. Many traditions come from times when we had a greater connection with the seasons and nature. Pagan or pre-Christian beliefs and rituals have entwined over the years with those of the Christian Churches and indeed with those of capitalism!

There's a white fluffy seedy plant seen in hedgerows now, I never knew its name and for years noted it as cotton bunny tails. Finally checking the correct categorisation, I now know that it is wild clematis which in the wonderful system of colloquial nomenclature is also known as grandfather's whiskers or old man's beard. I have read that in times gone by, the plant was gathered for homes as a natural tinsel like decoration and that it also had the name Father Christmas.

The Celts believed in seasonal deities, the Holly King of Winter (the Wren) and the Oak King of Summer (the Robin). These deities were enemies and at each solstice one gained supremacy over the other until the next solstice with the Robin winning over the Wren once the winter solstice had passed. Perhaps that is why the Robin became a symbol of Christmas? A more recent explanation is robin's bright chest plumage being somewhat like the bright red uniforms worn by the Royal Mail when the Victorians began sending Christmas cards by mail.

Holly grows as either male or female and whilst all holly trees flower, only the female trees have berries. This is known as dioecious and protects individuals from self-pollination. Celts and Romans brought evergreens inside in winter believing them magical. Christian mythology likens holly to the Crown of Thorns adorning Christ's head on the Cross. The berries speak of Christ's blood and the leaves of everlasting life.

An elf, says Britannica is a mean spirit, bringer of disease or nightmares or an elusive creature of the forest. In recent years they have been known to live on Christmas shelves and to engage in amusing antics in the night to surprise and delight our children. Another clever commercialisation perhaps but one in a long line of tradition, mocking dark and malevolent forces we fear? Outside in the woods, you may find a scarlet elf cup, not a vessel of revelry but a bright scarlet fungus and an usual pop of colour in the dark midwinter.





**Woolton Hill Preschool**  
[www.wooltonhillpreschool.org.uk](http://www.wooltonhillpreschool.org.uk)  
**The Church Hall, Woolton Hill, Newbury**  
 30 years of experience, Achieved 'Good' in 2016 Ofsted report  
 Secure, fun & caring environment  
 Friendly, loyal & Qualified staff  
 Strong curriculum based learning through play  
 French, Debutots & Talking tots at no extra cost!  
 Places for ages 2-5, government grant available  
 Breakfast club available for all children up to age 8  
 The staff walk the children to the Junior and Infants school  
 Flexible term-time hours. Mon-Thurs 8am-3pm Fri 8am- 12.30pm  
**Contact on: 01635 254721 Or email at: hello@wooltonhillpreschool.org.uk**




Andy Jones

Window Cleaning

07876 028905

Window Cleaning - Gutter Clearance - Fascia & Soffit Cleaning  
 Conservatories - Solar Panels

Call or text for a no obligation quotation on 07876 028905  
 contact@andyjoneswindowcleaning.co.uk  
[www.andyjoneswindowcleaning.co.uk](http://www.andyjoneswindowcleaning.co.uk)

THE HIGHCLERE

RED HOUSE

EAT IN OR TAKEAWAY





Full Menu & Pizza Menu

Tuesday - Saturday 12-9pm

01635 255 531

[www.thehighclereredhouse.com](http://www.thehighclereredhouse.com)

Dear Friends,

As December begins the Church enters the season of Advent. It is the beginning of the Christian year. In church we do not begin our year with the birth of Christ celebrated on Christmas Day, or on 1<sup>st</sup> January with the calendar year - but with this rather mysterious season of waiting and preparation which unfolds through the four weeks leading to Christmas Day.

Advent is a season where solemn themes of darkness, death and sin are interwoven with the Divine light shining, with increasing intensity, through the preparations God made through his people for the birth of Jesus Christ. Jesus Christ who is born to be the light of the world, the light which shines in the darkness and which could never be overcome. Without these solemn themes the birth of Christ makes little sense. We needed to know that we needed a way to overcome the darkness in ourselves and in our world. In Advent we watch the light grow, we light another candle, we open another door, and we learn that to find Jesus is not just to find a baby in a manger - but to find that God is with us.

In 2023, once more, the conflicts of our world have brought desperate and dark times, violence, hardship and poverty. Advent reminds us that this is not new, it has been ever so. Then at Christmas God challenges us to see afresh the light that is Christ, to have hope, to renew peace and to share in the work of love which belongs to each and every one of us.

As I retire, I return once more to these great themes. And this year as the Christian year turns, I am renewing my journey of faith in pastures new. So I pray for you all, that these themes of darkness and light, hope, peace and love will be renewed in you too; and that when Christmas Day arrives (as it always does on 25<sup>th</sup> December!) we may all truly celebrate the gift of the Christchild – the gift that is light in the darkness and peace and hope for our lives and our world.

With every blessing to you all... and thank you,  
Canon Christine

#### From the Church Registers: October 2023

Baptism: we ask God's blessing on the lives of....		
29th October	Arlo Duncan Kitson	Woolton Hill
29th October	Elodie Lorna Wheeler	East Woodhay
Funeral: may they rest in peace		
4th October	Steven John Bryant	Woolton Hill
19th October	Robert Joseph 'Joe' Curran	East Woodhay
Burial of ashes: may they rest in peace		
14th October	Patricia Lilian Wariner	Highclere
21st October	John Henry Shea	Woolton Hill

<b>NORTH WEST HAMPSHIRE BENEFICE</b> Ashmansworth + Crux Easton + East Woodhay + Highclere + Woolton Hill <i>...making Christ known in our communities</i> <b>Church Services DECEMBER 2023</b> <b>Welcome!</b> <i>Service details are correct at time of publishing,                      any necessary changes will be posted on church noticeboards.</i>			
<b>SUN 3<sup>rd</sup></b> <i>Advent Sunday</i>	Parish Communion Matins (BCP) Christingle Evensong (BCP)	East Woodhay Highclere Woolton Hill Ashmansworth	11.00am 11.00am 3.30pm 6.00pm
<b>SUN 10<sup>th</sup></b> <i>Advent 2</i>	Holy Communion (BCP) Parish Communion Matins (BCP)	East Woodhay Woolton Hill Highclere	8.00am 9.30am 11.00am
<b>SUN 17<sup>th</sup></b> <i>Advent 3</i>	Christmas Carol Service Christmas Carol Service Christmas Carol Service Christmas Carol Service	East Woodhay Highclere Ashmansworth Woolton Hill	11.00am 11.00am 4.00pm 6.00pm
<b>SUN 24<sup>th</sup></b> <i>Advent 4 Christmas Eve</i>	Holy Communion (BCP) Families at the Crib Crib Service Midnight Mass	Ashmansworth Highclere Woolton Hill East Woodhay	9.30am 11.00am 3.30pm 11.30pm
<b>Mon 25<sup>th</sup></b> <i>Christmas Day</i>	Christmas Family Service Christmas Communion (BCP) Christmas Communion Christmas Family Service	Woolton Hill Crux Easton Highclere Ashmansworth	9.30am 9.30am 11.00am 11.00am
<b>SUN 31<sup>st</sup></b> <i>Christmas 1</i>	Benefice Communion	East Woodhay	10.00am
WED 6 <sup>th</sup> Dec	Holy Communion	Woolton Hill	10.00am
<b>Contact number for church enquiries during the vacancy:</b> <b>Benefice Office <u>07577 423715</u></b>			
<b>Rector:</b> Vacancy		<b>Associate Priest:</b> Revd Professor Chris Hancock 254718	
<b>Reader:</b> Suki Coe 07990 755323		<b>Reader Emeritus:</b> Rosemary Cahill 253306	

# Wonders with Wood

Hardy's Custom-Made Carpentry & Joinery

Chris Hardy  
Bruan Road  
Newbury

07872124367  
chris.hardy72@gmail.com



## 1st Woolton Hill Cub Camp '23



Once again our intrepid Cub Pack was out on camp in October! This year we visited Earlywood Scout Camp near Sunningdale to brave the weather and join our friends from Inkpen and Kintbury Cub Pack for a joint weekend of outdoor activities.

Earlywood offers excellent facilities, including a climbing wall and crate stacking area which challenged even the most experienced Cubs. We were extremely lucky with the weather, allowing a full 2 days of outdoor fun and games in the large woodland site. Slacklining, treasure hunts, geocaching, a blindfold string run, archery, and lots of exercise running around!

Accommodation was provided in the building this time, so no tents to put up or take down; instead we had the luxury of indoor bunk beds - well, some did. The rest of us had mattresses on the floor... We had a lovely big kitchen for food preparation and lots of tables and chairs too.

The Cubs all did a great job of looking after themselves and helping with setting tables, washing up and keeping the place in good order. They all challenged themselves to take on the climbing activities, with lots of encouragement from their friends. They certainly have earned lots of badge merits, so there will be plenty of sewing to do when we hand out their badges

Also a big thank you to all the helpful parents who came along during the event to assist with activities and most importantly to sweep and tidy the building before we left!

We hope to have many more adventures with the Cub pack over the next year of Scouting, but we can't do it without you!

If you are interested in helping us run Scouting in Woolton Hill, we need more adults to join and expand our ranks! We presently run Beavers, Cubs and Scout sections, all in need of more adults to give more young people valuable Skills for Life.

Please contact the Cub Leader on [wooltonhillcubs@gmail.com](mailto:wooltonhillcubs@gmail.com) or our Group Lead [mo.osborne@btinternet.com](mailto:mo.osborne@btinternet.com) for more information, and visit the scout website here: <https://www.scouts.org.uk/volunteer>

***louise benson*** mobile hairdresser

01635 38041 ANY TIME

*quality hairdressing with a personal service*

### Your local renewable energy specialist

Now installing EV chargers for solar PV

Heat Pump servicing - Mitsubishi Accredited  
PV repairs & batteries - MCS/NICEIC certified

Contact Paul Gibbons on 07791 364408  
or visit [www.greenwiresolar.co.uk](http://www.greenwiresolar.co.uk)



Greenwire Solar, October Cottage, Broadlayings, Woolton Hill, Newbury RG20 9TT



## Penwood Nurseries



Thousands of different hardy trees, shrubs, herbaceous perennials, roses, conifers, fruit, climbers, ferns and grasses are always available.

A family run business. Most of our stock is produced on site and we are happy to help you find just what you are looking for.

enquiries@penwoodnurseries.co.uk [www.penwoodnurseries.co.uk](http://www.penwoodnurseries.co.uk)  
The Drove, Penwood, Newbury RG20 9EW  
01635 254366



Fully qualified and insured

Professional, friendly and reliable with attention to detail coupled with great value pricing

- Tree felling
- Tree reduction
- Climbing & aerial work
- Stump removal
- Hedge reduction
- Site clearance

Contact **Nigel Smith** on 07803 034716

Email: [nigel@highcleretreeworks.co.uk](mailto:nigel@highcleretreeworks.co.uk)

Visit us at [www.highcleretreeworks.co.uk](http://www.highcleretreeworks.co.uk)

We take on small and large jobs and will happily discuss any individual requirements with you

Emergency work undertaken

### PAUL S. WALDEN Painter & Decorator

For all your painting and decorating requirements



City & Guilds Qualified  
Interior & Exterior  
25 years' experience  
all work guaranteed

Tel no.: 07802 578934

## OVEN SOLUTIONS

Put That Sparkle Back Into Your Oven

- Biodegradable deep clean
- Ovens, hobs, extractors & BBQs
- Repair service including elements & seals etc.
- Non-franchise established over 18 years
- Child and pet friendly. No fumes
- See our reviews via website



**Peter Hudson 07733 253 563 [Oven-Solutions.co.uk](http://Oven-Solutions.co.uk) [peterhudson934@gmail.com](mailto:peterhudson934@gmail.com)**

## East Woodhay Parish Council



Recently we have had £5000 worth of repairs made in the play areas in Woolton Hill. Some of you may have noticed the train apparatus was out of action for a couple of weeks whilst repairs were sought and completed- this train alone cost approx £3000 to repair. All the play equipment in Woolton Hill and Heath End forms the main part of our Asset Register, a list of everything the council owns and maintains (you can find it on our website) and which forms part of our yearly audit. The assets we maintain in the parish have a value of approx £300,000 and the precept we raise every year within your council tax is used for the maintenance and replacement of these assets.

Reminder: With the leaves falling and ground soaked, please remember it is the owner's responsibility to clear ditches outside their property to allow water to drain away as easily as possible.

Amy White



1<sup>st</sup> Wash Common Scout Group Event

# Christmas Fayre

1<sup>st</sup> December 2023 6pm – 8.30pm

1<sup>st</sup> Wash Common Group HQ, Ramblers Wood, Enborne Street, Wash Common  
RG14 6TW

BBQ – Commercial Stalls – Bar – Silent Auction  
Raffle – Tombola – Christmas Gifts – Santa!



**Let's come together to celebrate Christingle**

Christingle is a great way for communities everywhere to get together this Christmas to catch up, make some special memories, and have fun. Come and join us!

Location:	St Thomas' Church, Woolton Hill		
Date:	3rd December	Time:	3.30pm or from 3pm to make Christingles
To find out more, contact: Email: <a href="mailto:stthomassundayclub@gmail.com">stthomassundayclub@gmail.com</a> or find us on Facebook: <a href="https://www.facebook.com/stthomassundayclub">@stthomassundayclub</a>			

christingle.org

## HANDEL'S MESSIAH

A candlelit performance given by the singers and players of the

BURGHCLERE BAROQUE ENSEMBLE

Directed from the violin by  
THERESA CAUDLE

Friday 22nd December 2023 7.00 pm  
Church of the Ascension, Burghclere

Tickets £25 (under 18s free)

Includes complimentary wine or soft drink

Box office:

email [theresa@burghclerebaroque.com](mailto:theresa@burghclerebaroque.com)

tel: 01635 276009

Further details at

[www.burghclerebaroque.com](http://www.burghclerebaroque.com)



## Lock & McDermott Ltd Painters & Decorators

Public & Employers' Ins. held

Qualified with over 30 years of experience

Producing High Quality Interior and Exterior Work in the Private Sector

✉ [lynda861@btinternet.com](mailto:lynda861@btinternet.com) | ☎ 01264 363 267 | Trading Standards Approved  
Trader (CRB Checked)



An East Woodhay Society event in association with Highclere Society.

## THE VILLAGE CHRISTMAS CHARITY WALK

WEDNESDAY 27<sup>TH</sup> DECEMBER 2023

Meeting at 10.30am for an 11am prompt start at  
THE HIGHCLERE RED HOUSE.

ALL AGES WELCOME, THE CIRCULAR ROUTE WILL LAST  
APPROX 2 HOURS.

REFRESHMENT STOP EN ROUTE, WITH FREE MULLED WINE AND MINCE PIES,  
SPONSORED BY EAST WOODHAY SOCIETY AND HIGHCLERE SOCIETY.

NO NEED TO BOOK, JUST TURN UP!  
STURDY FOOTWEAR OR WELLIES STRONGLY ADVISABLE.  
PUSHCHAIRS NOT RECOMMENDED.

DOGS WELCOME, BUT MUST BE KEPT ON LEADS AT ALL TIMES.

BRING YOUR FAMILY & FRIENDS!

This year's walk is organised by East Woodhay Society, in association with Highclere Society, in aid of  
Newbury Soup Kitchen. [newburysoupkitchen.org.uk](http://newburysoupkitchen.org.uk)  
For further details contact: [wooltonhill.villagewalk@gmail.com](mailto:wooltonhill.villagewalk@gmail.com)



## Learn to Draw & Paint Daytime Adult Classes



- 10 week Adult Daytime Art courses - held throughout the year
- Designed for absolute beginners to intermediates
- Warm and welcoming environment
- Pencil, Watercolour and Acrylic (as well as other mediums) every course
- Morning or Afternoon sessions available
- Held at St Marys Church, Shaw

**Creative Art Classes Newbury**

Get in touch for more details or to book your space. or visit our website [www.creativeartclasses.co.uk](http://www.creativeartclasses.co.uk) or email [studio@creativeartclasses.co.uk](mailto:studio@creativeartclasses.co.uk)

# 1,000, BEARPEES COMPLETED!

On learning 'CHILDREN IN NEED' fundraising was around again our lovely residents of Enbridge House Care Home decided they wanted to do something positive to raise money for the children's charity.

Claire, our exceptional Care Manager, came up with the idea of joining Pudsey Bear in his exercise challenge.

By including our 'FIT'ness instructor, Simon, 1,000, BEARPEES were completed over two weeks. And so far we have raised over £400.

All our residents played their part including 3 of our lovely ladies who have celebrated their 100th birthdays.

Family and friends could join us at our exercise sessions and lots of fun and laughter was enjoyed by all. (Including the glass of prosecco to recover!)

Well done to the wonderful residents and staff of Enbridge House.

WE ARE VERY PROUD OF YOU ALL.

Mandy and Karen  
Enbridge House

**RED**  
76  
CHARTERED  
ACCOUNTANTS  
& BUSINESS  
ADVISERS

**Free initial consultation at a time to suit you**

- Corporation tax
- HMRC Enquiries
- VAT
- Self Assessment
- Bookkeeping
- CGT
- Statutory Accounts
- Valuations

**Jon Dennis FCA**  
01635 783 000 [jon@red76tax.com](mailto:jon@red76tax.com) [red76tax.com](http://red76tax.com)




**YEW TREE** Garden Centre  
Ball Hill, Newbury RG20 0NG  
[www.yewtreegc.co.uk](http://www.yewtreegc.co.uk)  
01635 255250

## CHRISTMAS IS COMING!

If you feel like there aren't enough hours in your day...  
We can HELP you prepare for Christmas  
and to lighten your load!

- Sourcing/buying presents
- Gift wrapping
- Food orders
- Wine orders
- Christmas tree decoration
- Fitting of lights on houses
- Organise Christmas parties

[www.mypartnerintime.co.uk](http://www.mypartnerintime.co.uk)  
[info@mypartnerintime.co.uk](mailto:info@mypartnerintime.co.uk)  
07966037070



MY PARTNER IN TIME  
MAKING TIME FOR CHRISTMAS



# East Woodhay Society

## Annual Christmas Walk –Wednesday 27<sup>th</sup> December

The annual EWS Christmas Charity walk takes place on Wednesday 27<sup>th</sup> December. Please meet at 10.30am for an 11am prompt start at the Highclere Red House.

All ages welcome and it will be a circular route lasting approximately 2 hours. There will be a refreshment stop with free mulled wine and mince pies sponsored by East Woodhay Society and Highclere Society.

There is no need to book; just turn up.

Please wear sturdy footwear or wellies. Pushchairs are not advisable but dogs are welcome as long as they are kept on short leads at all times.

Thanks to Nicola Meadows and Ali Mitchell for organising this event.

### Woodhay Walkers

The days may be shorter and may be tricky to go along some paths but don't worry, Woodhay Walkers continues to walk on Friday morning. Just wear good footwear and if you would like to come along please email [woodhay-walkers@gmail.com](mailto:woodhay-walkers@gmail.com). This is because it is possible there may need to be some last-minute changes to routes due to weather conditions.

We start promptly at 10.30am.

It's a lovely way to meet others, have a chat and is great for physical and mental health.

The photo alongside was taken on our walk at the end of October where our circular walk from Snelsmore Common took us past Donnington Castle. We were fortunate that it was a bright sunny day and the views from the castle were marvellous.

Friday 24<sup>th</sup> Nov – up to 4 miles from Furze Bush Inn

Friday 1<sup>st</sup> Dec - 3 miles from Woolton Hill Church Hall

Friday 8<sup>th</sup> Dec - up to 4 miles from Thatcham Discovery Centre

Friday 15<sup>th</sup> Dec - 4 miles from Woolton Hill Church Hall

Friday 22<sup>nd</sup> Dec - 4 miles from East Woodhay Village Hall

Wednesday 27<sup>th</sup> Dec, 4 miles, Village Walk, Red House, Highclere

Mark Rand – Chair EWS  
Email – [eastwoodhaysociety@gmail.com](mailto:eastwoodhaysociety@gmail.com)

Website: [www.wooltonhill.com](http://www.wooltonhill.com)

Telephone - 250898



# Christmas Lights & Tractor Run

## FUNDRAISER

Raising money for the Children's Ward and Charlie's Day Unit at Basingstoke & North Hampshire Hospital

### HARWOOD RISE

### SATURDAY 16 DECEMBER

Fabulous entertainment from 5.30pm in Harwood Rise, Woolton Hill with the amazing Tractor Run visiting the surrounding areas from 4.30pm

- Watership Brass Band
- Candy floss
- Festive refreshments
- Children's activities
- Cods and Rockers catering
- Spectacular lit up tractors!

No parking is available at the event. Please walk to Harwood Rise or make use of the Woolton Hill Junior School car park. The Tractor Run and Harwood Rise event are for north Hampshire residents. This event is weather dependant.

# Retirement Rebels

Mercure Newbury West Grange Hotel,  
Thatcham, RG7 5UP

Every second Monday of the month  
12.00 – 1.30pm



- ◆ Are you either approaching retirement or already retired?
- ◆ For some the idea of retirement is one of freedom, leisure and letting go.
- ◆ For others it brings feeling of insecurity and uncertainty – 'Now what do I do?'
- ◆ If you are approaching retirement, or already retired, why not come along to Retirement Rebels?
- ◆ Here you can network with like-minded people, ask questions and find your own answers, gaining clarity and focus along with your peers who may be feeling just like you.



**PLACES LIMITED... BOOK YOUR PLACE NOW!**

**[www.ticketsource.co.uk/robdonnelly](http://www.ticketsource.co.uk/robdonnelly)**

For more information please call Rob on **07710 726424**  
or email **info@robdonnellytherapy.com**

## A H Pet Services

Angela Hutchins, Hatt Common

Reliable, friendly care for all your animals,  
experienced with dogs and horses



**Dog Walking and  
Pop in daily care for all pets**

Fully insured, Dog first aid course  
certificate  
Individual service, only dogs from the  
same household walked together

**Call or text Angie on  
07733 298771**

**KEITH  
LAWRENCE**

KITCHEN BEDROOM & BATHROOM INSTALLATIONS



**Planning to Completion  
Traditional & Contemporary**

FREE QUOTATIONS 01488 608789

3 Ermin Street, Stockcross, Berkshire RG20 8LG

[www.lawrenceinstallations.co.uk](http://www.lawrenceinstallations.co.uk) 01488 608789



## RJ Lampard & Company Ltd

*A family run business Est 1976*



- **Specialist Drainage & Ditching Works**
- **Road Repairs and Road Construction**
- **Civil Engineering Works - Concreting etc**
- **Own fleet of plant and machinery**
- **Fully qualified and experienced operatives**

*For further information please call:-*

**01635 253137 / 07768 201370 or email: [rj@rjlampard.co.uk](mailto:rj@rjlampard.co.uk)**

# Light & Day Electrics

Part-P & 17th Edition qualified

New installations~New circuits~Rewire Consumer unit replacement

Extend Circuits~Lighting~Garages~Outside Buildings

Smoke alarms~Fault Finding

For all your electrical needs & free estimate

Phone Jeremy 01635 278 485 07885 985 275

# AREA SWEEP

## CHIMNEY SWEEP

A PROFESSIONAL CHIMNEY SWEEP SERVICE  
CLEAN RELIABLE BRUSH AND VACUUM  
FULLY INSURED MANY YEARS EXPERIENCE

AGA'S

RAYBURNS

JETMASTERS

ALL OPEN FIRES

WOODBURNERS

NEST REMOVALS

OIL FIRED BOILERS

SWEEPING CERTIFICATES ISSUED

CAPS AND COWLS SUPPLIED AND FITTED



CALL DARREN

01635 569195/07900398678

areasweep@btinternet.com



Building & Construction

Loft Conversions

Extensions

Kitchens

Bathrooms

Refurbishments

Patios

Double glazing

Small selection of building work we undertake

For all your building projects and free estimate

Call Jeremy

01635 278 485

07885 985 275

www.watermill-sounds.co.uk



## the Alexander Technique

Relieve back & neck pain

Enhance health & well-being

Improve posture & stamina

for lessons and courses:

Judith Turner MSTAT

01635 253981

07771 896696

judeturner7@gmail.com

www.jt-alexandertechnique.co.uk



## A D CARPENTRY & BUILDING

- Joinery
- Built-in storage
- Doors and windows
- First and second fix
- Rotten wood
- Refurbishments

Free estimates, competitive prices -  
call Andrew **07979 455903**

## WINDING WOOD VINEYARD

Open to small parties  
for tours and tastings  
from May to October

www.windingwoodvineyard.co.uk | hello@windingwoodvineyard.co.uk | 07798 885050



## Aardvark PROFESSIONAL OVEN AND CARPET CLEANING SERVICES

AARDVARKCLEANINGSERVICESLTD.COM

07783 810806

## SHAPE UP YOUR WEEK

Burghclere Hall

**Monday** Hone 'N' Tone  
Beginners / Interm.

**Body Blast!** 6.45-7.30pm.  
Suits all levels (£6.00)

7.45-8.45pm. (£6.00)

**Tuesday** Super Sweaty  
Step!

Help achieve your fitness goal. 7.30-8.30pm.  
(£6.00)

**Thursday HITT!**

Torch calories with this energetic class 7.30-8.30pm.  
(£6.00)

Fully Qualified Instructor, Sally

**01635 278680**



# The Schools of Woolton Hill

## New outdoor woodland classroom.

The Schools of Woolton Hill has unveiled its new outdoor woodland classroom to pupils and celebrated with an Outdoor Learning Day filled with den building, nature weaving, scavenger hunts, outdoor art and concocting nature cocktails.

Over recent years there has been a growing body of evidence that supports the value of the 'outdoors' in terms of children's development. Outdoor learning provides children with the space to move freely, and movement along with play has been described as the most natural and powerful modes of learning for young children. The outdoors also has a huge positive impact on the health and mental wellbeing of children.

Because of this, the Leadership Team at The Schools of Woolton Hill have been working hard to utilise the large outdoor space and woodland area within the school grounds to ensure pupils and teachers can benefit from creating a new dimension to everyday learning.

Head Teacher, Paul Davies, said: "We are extremely fortunate to have a large outdoor space, including our very own woodland, that we can use to create an exciting and inspiring outdoor classroom.

"Through our new outdoor learning environment we aim to provide all of the children the opportunity to learn outside as much as possible. During our outdoor learning sessions children are encouraged to work both independently and within a group to solve problems in a creative way, building important life



skills in the process. These activities are also combined with other lessons within the curriculum to truly embrace the outdoors."

Alongside the outdoor classroom, The Schools of Woolton Hill also launched new outdoor spaces for the children to play and interact in offering many inviting places for everyone to enjoy throughout the school day.

These new spaces include:

Camp-fire inspired seating areas created out of recycled wood

A 'lookout' that has binoculars to study wildlife and bean bags to sit on and socialise with friends

Wooden climbing equipment to support physical development and practical-problem solving

Pupil at The Schools of Woolton Hill, Jack Dando, aged 9, said: "The Outdoor Learning Day was so much fun - I didn't want it to end. I got to explore how different wildlife and insects live and my favourite part was using materials I found in the outdoor classroom to create a sculpture. I can't wait to have a lesson outside again!"

### About The Schools of Woolton Hill

*The Schools of Woolton Hill, based in the village of Woolton Hill, Newbury, offers high-quality and excellence in everything it does, through teaching, opportunities and the experiences it gives to the children. Children are given the tools they need to 'let their light shine' whilst in primary and secondary education, and beyond.*

[www.schoolsofwooltonhill.com](http://www.schoolsofwooltonhill.com)



# East Woodhay Local History Society

The History Society had a highly entertaining & informative talk in October. Our speaker, Harry Wrightson, took on the persona of Captain Hardy in full naval uniform & gave us a detailed description of life (warts & all!) as a sailor in Nelson's Navy. He was piped aboard by Norman Powers who, as most know, is ex-Navy himself.



Harry had also brought an almost full-size replica of a cannon plus a sample of Grog & ship's biscuits – I found the only way to eat one was to soak it in the grog! We learnt of several phrases that are still used today that have their origin from that time: square meal, copper bottomed & on the fiddle to name a few. It certainly was a

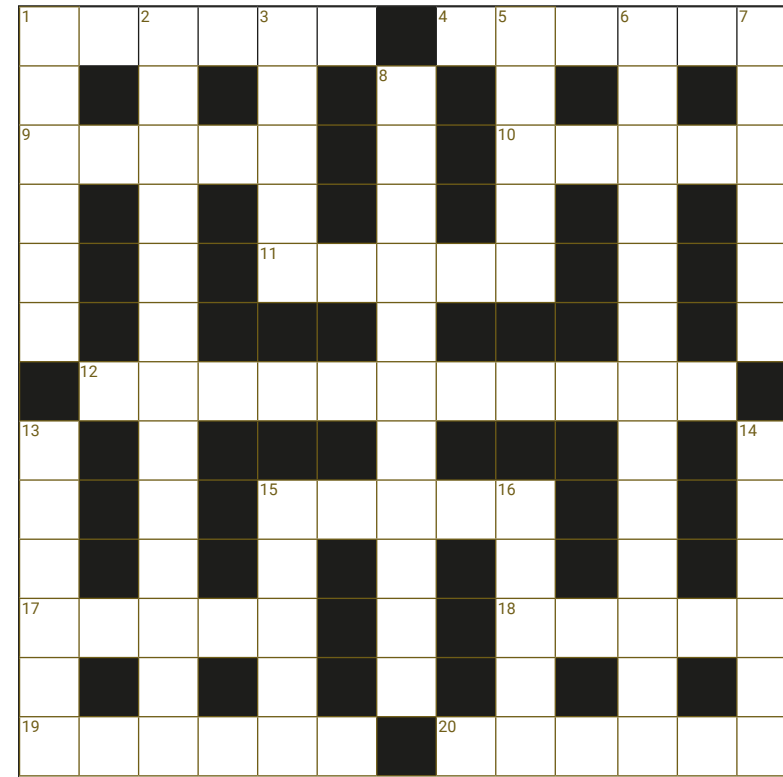


hard life but, in some respects, better than being on land.

There is no meeting in December.

Chris Dalton  
Secretary

**Continuing!**  
**Simple Traditional Social Dancing for Fun**  
No experience necessary  
Easy on the knees  
No partner required  
Highclere Village Hall  
Mondays 2.00 to 3.30 – **but check for dates**  
**Never** the first Monday of the month  
Suggested voluntary contribution £2  
Sue Crick 07557 870038  
Jim Crick 07776 302137



250

**Answers crossword no 249**  
**Across:** 1 Rocket, 4 Dorsal, 9 Cameo, 10 Irate, 11 Assam, 12 Roman Candle, 15 Tittle, 17 Blimp, 18 Wager, 19 Breezy, 20 Untrue  
**Down:** 1 Racing, 2 Commemorative, 3 Ebbola, 5 Opium, 6 Scandalmonger, 7 Leeway, 8 Consecutive, 13 Hubbub, 14 Hoarse, 15 Topaz, 16 Edwin

### Across

1. One who tries out old fashioned beds? (6)
4. It turns out that the weed I ate comes from Switzerland (6)
9. Sounds like you are in it with the inhabitants of Northern Canada (5)
10. Put your foot down as you need to post letter (5)
11. I hear the sun is shining on my hopes for a salary increase (5)
12. Promising to take care of the funeral (11)
15. They are usually carols at this time of year (5)
17. Take it back to lab for spicy dinner (5)
18. Dangerous pier leans on pole to become ready to eat (5)
19. Curiously, engine's made the standard, but has lost direction (6)
20. I press for churches to have steeples (6)

### Down

1. A small thing, but traditional for Christmas

day (6)

2. With one last bluff, sing for Christmas dinner (8,5)
3. Go in and begin entertainment (5)
5. He sat around, but really should have been doing things in a hurry (6)
6. Grape pip and prawn turned up in Christmas essential (8,5)
7. Listen, you are in the deep end and need someone to rely on (6)
8. Knowing it's her, cling on to sweet symbol of Christianity (11)
13. Find one for the tree that goes with bangles and beads (6)
14. Learner bends around to make sure properly mixed (6)
15. Caught by planned operation, so add time to sing (5)
16. Unusual to see us pry into anything, but we wanted the sweet liquid! (5)

# Directory of Local Organisations

## 24hr Emergency Numbers

**Thames Water** . . . . . 0845 9200 888  
 Southern Water (water supply) . . . . . 01273 606766  
 Southern Electric . . . . . 105 or 08000727282

**Arbor Flora Group.** . . Secretary: Diana Durkin . . . . . 07980520044

**Basingstoke & Deane Borough Council** . . . . . 01256 844844  
 member: Graham Falconer  
 (cflr.graham.falconer@basingstoke.gov.uk). . . . . 253144

## Churches

East Woodhay, St Martin's . . . . . [www.stmartins.church](http://www.stmartins.church)  
 Churchwardens. . . . Richard Twallin . . . . . 253354  
 Andrew Colville. . . . . 254017  
 W'Iton Hill, St Thomas' [www.wooltonhill.com/community/church/church.html](http://www.wooltonhill.com/community/church/church.html)  
 Churchwardens. . . . Chris Vane . . . . . 253707  
 Bridget Wheeler . . . . . 250729

## Defibrillators

There are 5 public access defibrillators in the Parish, WH Church Hall, EW Village Hall, . .  
 the Rampant Cat, outside St Martin's School, East End and WH Junior School.

**Doctors' Surgery Woolton Hill.** . . . . . 253324  
 Patient Participation: . Rosemary Cahill . . . . . 253306

**Ducklings.** . . . . . Fiona Morgan . . . . . 42080

**East Woodhay & Highclere Neighbourcare Volunteer Driving**  
 For transport to medical appointments please call. . . . . 01635 745600  
[www.ewhneighbourcare.org.uk](http://www.ewhneighbourcare.org.uk)

**East Woodhay Charities** . . . . . Secretary: Susan Wren . . . . . 254875

**East Woodhay Cricket Club** . . . . . Contact Adrian Batchelor . . . . 07803 519765

**East Woodhay Flower & Produce Show.** . . . . . 254114  
[www.eastwoodhayflowershow.co.uk](http://www.eastwoodhayflowershow.co.uk)

**East Woodhay Football Club** . . . . . Chairman: Alan Jones . . . . . 254024

**East Woodhay Footnotes Mens Singing Group,** organiser Peter Stanley,  
 07467572341

**East Woodhay Local History Society** .Sec: Christine Dalton . . . . . 07880 628 114

**East Woodhay Parish Council Members:** . [www.eastwoodhay-pc.gov.uk](http://www.eastwoodhay-pc.gov.uk)  
 Paul Hurst (Ch) . . . . [paul.hurst@eastwoodhay-pc.gov.uk](mailto:paul.hurst@eastwoodhay-pc.gov.uk) . . . . 01635 254363  
 Susan Cooper . . . . [susan.cooper@eastwoodhay-pc.gov.uk](mailto:susan.cooper@eastwoodhay-pc.gov.uk) . . . . 01635 254149  
 Graham Dick . . . . [graham.dick@eastwoodhay-pc.gov.uk](mailto:graham.dick@eastwoodhay-pc.gov.uk) . . . 01635 255372  
 Martin Hainge. . . . [martin.hainge@eastwoodhay-pc.gov.uk](mailto:martin.hainge@eastwoodhay-pc.gov.uk) . . 01635 255793  
 James Mitchell . . . . [james.mitchell@eastwoodhay-pc.gov.uk](mailto:james.mitchell@eastwoodhay-pc.gov.uk) . . . . 01635 254747  
 Mark Rand . . . . . [mark.rand@eastwoodhay-pc.gov.uk](mailto:mark.rand@eastwoodhay-pc.gov.uk) . . . . 01635 250898

# Directory of Local Organisations

## East Woodhay Parish Council continued

Karen Titcomb (V Chair) [karen.titcomb@eastwoodhay-pc.gov.uk](mailto:karen.titcomb@eastwoodhay-pc.gov.uk) . . . . 07974011065  
 Andrew Watson. . . . [andrew.watson@eastwoodhay-pc.gov.uk](mailto:andrew.watson@eastwoodhay-pc.gov.uk)  
 Amy White (Clerk) . . [clerk@eastwoodhay-pc.gov.uk](mailto:clerk@eastwoodhay-pc.gov.uk) . . . . . 07855 275336

**East Woodhay Short Mat Bowls Club** Contact: Cathy Neller . . . . . 01635 253467

**East Woodhay Silver Band.** . . . . . Contact: Rosemary Gittins . . . . 07917 522180

**East Woodhay Society.** . . . . . Chairman, Mark Rand . . . . . 250898  
[eastwoodhaysociety@gmail.com](mailto:eastwoodhaysociety@gmail.com) [www.wooltonhill/ews](http://www.wooltonhill/ews)

**East Woodhay Twinning Association** Helen Allen, Secretary . . . . . 01635 250776

**East Woodhay Village Hall** . . . . . [ewvillagehallbookings@gmail.com](mailto:ewvillagehallbookings@gmail.com)

**East Woodhay W.I.** . Secretary: Pat Gibbs . . . . . 07831 669 220

**Hampshire County Council** . . . . . Member: Tom Thacker. . . . . 01962 771863

**Highclere Film Club** . Secretary: Chris Martin . . . . . 253461

**Highclere Evergreens** Leader: Mrs. V. Burge . . . . . 864584

**Litter warden.** . . . . . [litterwarden@eastwoodhay-pc.gov.uk](mailto:litterwarden@eastwoodhay-pc.gov.uk)

**MP - Kit Malthouse** . 01264 401401  
[kit.malthouse.mp@parliament.uk](mailto:kit.malthouse.mp@parliament.uk) . . . . 2 Church Close, Andover, SP10 1DP

**Neighbourhood Watch**  
 Woolton Hill. . . . . vacant  
 North End . . . . . Jack Castle . . . . . 253537

**Newbury Chamber Choir** . . . . . [info@newburychamberchoir.co.uk](mailto:info@newburychamberchoir.co.uk)

**Nwby. Wkly. News WH Correspondent** . . . . . Nicole Bentham . . . . . 255582

**Police.** . . . . . Hampshire Constabulary . . . . 101  
 Kieron Venn . . . . . [email.kieron.venn@hampshire.police.uk](mailto:email.kieron.venn@hampshire.police.uk)

**The Samaritans.** . . . . . Freephone 116 123

## Schools

The Clere. . . . . 278372  
 The Clere Community Office. . . . . 278129  
 St Martin's East Woodhay CE Primary . . . [www.st-martins.hants.sch.uk](http://www.st-martins.hants.sch.uk) 597796  
 St Thomas', Woolton Hill, Infants . . . . [www.stthomasinfant.co.uk](http://www.stthomasinfant.co.uk) . . 253431  
 Woolton Hill Juniors. . [www.wooltonhilljunior.co.uk](http://www.wooltonhilljunior.co.uk) . . . . . 253364

**St Martin's Guild.** . . Secretary: Sarah Leventhorpe . . . . . 255293  
[info@eastwoodhayfete.org.uk](mailto:info@eastwoodhayfete.org.uk) [www.eastwoodhayfete.org.uk](http://www.eastwoodhayfete.org.uk)

# Directory of Local Organisations

<b>Spectrum</b> . . . . .	<a href="http://www.wooltonhill.com/Spectrum.html">www.wooltonhill.com/Spectrum.html</a>	
<i>Chairman</i> . . . . .	Bob King . . . . .	253378
<i>Treasurer</i> . . . . .	Gill Burrows . . . . .	254301
<i>Distribution</i> . . . . .	Chris Vane . . . . .	253707
<i>Advertising</i> . . . . .	Michael Robinson. . . . .	253004
<b>Editors:</b>		
<i>Denny &amp; Denys Blakeway (Jan, Feb &amp; Mar)</i> . . . . .		<a href="mailto:spectrumwh@outlook.com">spectrumwh@outlook.com</a>
<i>Mary Gulliver (Apr, May &amp; June)</i> . . . . .		<a href="mailto:mary@TheGullivers.co.uk">mary@TheGullivers.co.uk</a> . . . . . 254567
<i>Jim Hannington (Jly, Aug &amp; Sept)</i> . . . . .		<a href="mailto:seamusman3@gmail.com">seamusman3@gmail.com</a> . 07895637611
<i>Avril Cole (October, November and December)</i> . . . . .		<a href="mailto:spectrumwh@outlook.com">spectrumwh@outlook.com</a>
<b>St Thomas' Handbell Ringers</b> . . . . .	Nicole Bentham . . . . .	255582
<b>Women in Touch</b> . . . . .	Angie Maxwell . . . . .	253233
<b>1<sup>st</sup> Woolton Hill Beavers &amp; Cubs</b> . . . . .	<a href="mailto:mo.osborne@btinternet.com">mo.osborne@btinternet.com</a>	
<b>Woolton Hill &amp; District Gardeners' Club</b> . . . . .	Nick Harcourt . . . . .	253546
<b>Woolton Hill Argyle Football Club</b> . . . . .	Jon Dennis <a href="mailto:money.whafc@gmail.com">money.whafc@gmail.com</a>	
<b>Woolton Hill Church Hall</b> . . . . .	<a href="mailto:wooltonhillhallbookings@gmail.com">wooltonhillhallbookings@gmail.com</a>	
Clifton, Tile Barn Lodge, Tile Barn, Woolton Hill		
<b>Woolton Hill Pre-School</b> . . . . .	Nicola Logan. . . . .	254721
<b>Woolton Hill Sports Club (tennis, table tennis)</b>	Alison Whitehorn . . . . .	254391
<b>Woolton Hill Village Market</b> . . . . .	<a href="http://www.whvm.co">www.whvm.co</a> <a href="mailto:whvmarket@gmail.com">whvmarket@gmail.com</a>	
<b>Woolton Hill Website</b> Contact: Mark Rand . . . . .		250898
<a href="http://www.WooltonHill.com">www.WooltonHill.com</a> <a href="mailto:eastwoodhaysociety@gmail.com">eastwoodhaysociety@gmail.com</a>		

## Spectrum Advert Rates

(with effect from April 2023)

Annual rates—please contact Michael Robinson Tel 253004

For ALL fund-raising events (charity, political, etc)

£3 per quarter page b&w, £5 colour

For all commercial and professional advertisements

£25 (colour) per quarter page

Invoices are issued once the publication has been sent to print.

Please note that advertisements may be altered in size to fit the space available.

Guidance to advertisers including ad sizes and file format:

[www.wooltonhill.com/spectrum-guidance](http://www.wooltonhill.com/spectrum-guidance)

Subscription: £5 per annum

## Liberty Garden Buildings



[www.libertygardenbuildings.com](http://www.libertygardenbuildings.com)

Yew Tree Garden Centre,  
Ball Hill, Newbury RG20 ONG

**01635 255533**



**GREENHOUSES  
HOME OFFICES  
GARDEN ROOMS  
ROTATING PODS  
SUMMERHOUSES  
GARDEN SHEDS**



**CONTROL SERVICES**  
Pest Management & Timber Care

Wasps • Hornets • Rats • Mice • Moles  
Woodworm • Ants • Fleas • Flies • Moths  
Bed Bugs • Beetles • Cockroaches

*Domestic and Commercial*

[www.pestcontrolberkshire.com](http://www.pestcontrolberkshire.com)

**01635 250 852**



# Mown & Grown

HEDGE CUTTING • FENCING • GROUNDS MAINTENANCE

**01635 745060**

[mownandgrownnewbury@gmail.com](mailto:mownandgrownnewbury@gmail.com)

[www.mownandgrown.net](http://www.mownandgrown.net)



# Esseborne Manor Hotel & Restaurant

Family run business offering a warm welcome and the best food in the area.

Daily lunches with canapes & wine

A la carte dinners

7-course tasting dinners

Sunday lunches

Vintage afternoon teas



Perfect for private functions & weddings

Hurstbourne Tarrant SP11 0ER,  
[www.esseborne-manor.co.uk](http://www.esseborne-manor.co.uk), 01264 736 444

# MARSH fuels



*Heating Oil now available to collect in 20 litre drums*

**01635 253 253**  
**[www.marshfuels.co.uk](http://www.marshfuels.co.uk)**

H C Marsh (Newbury) Ltd, Ball Hill, Newbury, Berkshire. RG20 0PW