

November 2022

50p

Spectrum



Charles Kachinon 2012




GOLD & GREY
THE CURTAIN ROOM
10% OFF
CURTAINS
BLINDS
UPHOLSTERY
BOOK NOW FOR
PRE CHRISTMAS DELIVERY
Call: 07795 247 142
 Info@GoldAndGrey.uk
 WWW.GOLDANDGREY.UK



greentips
 TREE SURGERY
 YOUR LOCAL TREE CARE SPECIALIST

- Fully Qualified and Insured
- Tree Surgery
- Planting•Pruning•Removals
- Hedge Cutting
- Stump Grinding
- Woodland Management
- Chip, Mulch & Logs for Sale

T: 01635 254712
M: 07903 259973
www.greentipsuk.com

Editorial



I hope that you will all find it fitting that pride of place this month goes to our late monarch; Queen Elizabeth II. It is possible that some of you may remember seeing this front cover image of a painting that was commissioned some time ago, for the Queen's Diamond Jubilee. I think it is a marvelous tribute to her Majesty from a local artist; Charles Mackinnon, who has made reference within this picture, to connections that the Queen had with our local area & her relatives at Highclere in particular. My thanks to Charles for allowing me to use this image for our cover this month.

The painting was generously donated to the village of Highclere and hangs in the Jubilee room at HVH. To view it you must be booked into one of the many classes that use this room, or to know the secret code!

May we also remember that this month on 13th November is our Remembrance Sunday and I trust you will enjoy Christine's letter from the Rectory where the Queen and her duty in the ATS corps are warmly remembered.

It is possible that some of you may have wondered why there was no mention of the death of our dear late Queen, in the previous Spectrum issue. I'm afraid I was off on holiday and therefore the edition was done and dusted and left no room for any changes. None of can say that the event was entirely unexpected but the show of love and support received from the nation was testament to her popularity and our respect for the way in which she lived her whole life. We now move on into a new era. It is a tough act to follow, but I'm sure we all hope that Charles III will be up to the challenge.

Monarchy aside, we are entering a difficult time for the country as a whole but I hope as a community we can pull together and get through. Last month's Spectrum did contain some helpful websites and of course we should all keep abreast of news and updates on help available.

I trust you will find some items of interest in this edition of Spectrum – and as always please do let me know if you have anything you would like to share for our issue in December.

Kathy

Details of the picture: Please note the beautiful frame of diamonds surrounding the Queen – very fitting considering the picture was painted for her Diamond Jubilee. The tiara is Queen Mary's.

The top left of the picture commemorates the Queen's love of horses and the fact that a previous racing manager was a close friend, Lord Carnarvon. The top right depicts a view of Beacon Hill, whilst the bottom left is Highclere Church where the Queen often worshipped when she was staying at Highclere Castle (bottom right).

Editor for December

Kathy Scott
 'Bowood' Gore End Road,
 Ball Hill, RG20 0PG
 Phone: 01635 254756 (only between 6-9pm)
 Email: spectrumwh@outlook.com

Editor for January, February & March 2023:

Abbie Dando,
 5 Meadowbrook, Woolton Hill, Newbury, RG20 9AN
SpectrumEditorAbbie@gmail.com Tel 07477987943

<https://www.wooltonhill.com/spectrum>

Spectrum is a monthly community magazine serving East Woodhay and Woolton Hill. It is run by a committee of volunteers and is a not for profit publication. Reports on village activities and articles of local interest are welcomed for publication subject to the discretion of the editor. Copy should reach the editor by the seventh day of the month preceding publication and should be a maximum of 500 words. In the event of pressure for space, the editor reserves the right to reduce the length of the article while attempting to maintain the style of the writer and retaining as much content as possible. The editorial committee accepts no responsibility for the views expressed by Spectrum contributors or for the quality of goods and services provided by advertisers in this magazine.

The contents of this magazine are protected by copyright and nothing may be reprinted without prior permission.



Fully qualified and insured

Professional, friendly and reliable with attention to detail coupled with great value pricing

- Tree felling
- Tree reduction
- Climbing & aerial work
- Stump removal
- Hedge reduction
- Site clearance

Contact **Nigel Smith** on 07803 034716

Email: nigel@highcleretreeworks.co.uk

Visit us at www.highcleretreeworks.co.uk

We take on small and large jobs and will happily discuss any individual requirements with you

Emergency work undertaken

Diary of Events November 2022

Tuesday	1 st	EW Short Mat Bowls	EWVH	7.30pm
Wednesday	2 nd	NWR		8pm
Thursday	3 rd	AGM East Woodhay Village Hall Committee	EWVH	7.30pm
Friday	4 th	Woodhay Walkers	from WHCH	10.30am
Friday	4 th	Community Café	St Thomas Church	10-11.30am
Monday	7 th	Evergreens	HVH	2-4.15pm
Tuesday	8 th	EW WI - The History of Knitting 1800-1945	EWVH	2.30pm
Wednesday	9 th	EW Short Mat Bowls	EWVH	7.30pm
Friday	11 th	Woodhay Walkers	from WHCH	10.30am
Friday	11 th	Community Café	St Thomas Church	10-11.30am
Tuesday	15 th	Arbor Flora	HVH	2pm
Wednesday	16 th	EW Short Mat Bowls	EWVH	7.30pm
Wednesday	16 th	NWR		8pm
Friday	17 th	Woodhay Walkers	from WHCH	10.30am
Friday	17 th	Community Café	St Thomas Church	10-11.30am
Monday	21 st	EWLHS - Hugh Pihlens: When William III Came to Hungerford	Heath End VH	8pm
Wednesday	23 rd	EW Short Mat Bowls	EWVH	7.30pm
Thursday	24 th	WH & District Gardening Club: Wilf Simcox: Growing Soft Fruit	WHCH	7.30pm
Friday	25 th	Woodhay Walkers	from WHCH	10.30am
Friday	25 th	Community Café	St Thomas Church	10-11.30am
Monday	28 th	EW Parish Council	EWVH	7.30pm
Wednesday	30 th	EW Short Mat Bowls	EWVH	7.30pm
December 2022				
Friday	2 nd	Woodhay Walkers	WHCH	10.30am
Friday	2 nd	Community Café	St Thomas Church	10-11.30am
Wednesday	7 th	EW Short Mat Bowls	EWVH	7.30pm
Friday	9 th	Woodhay Walkers	WHCH	10.30am
Friday	9 th	Community Café	St Thomas Church	10-11.30am
Tuesday	13 th	EW WI - Christmas Party	EWVH	2pm



OUR SURGERIES:

Burlins Surgery, Burlins,
East Woodhay, Newbury,
Berkshire, RG20 0NU.

Foxhold House Surgery,
Crookham Common,
Thatcham,
Berkshire, RG19 8EL



We can help you meet all your pet and equine healthcare needs, with professional and caring staff who can treat your animal at a time that suits you. Out vets offer an emergency service giving you 24 hour reassurance.

...we're here to listen

24 hour phoneline: 01635 254544

www.coachhousevets.com

ATH PLUMBING & HEATING

OFTEC Registered

- New boiler & system installations
- Mains pressure hot water cylinder -service & installation-
- Maintenance
- Insured, references available, free estimates
- Bathroom installation

Please call Nigel Brown:

01635 254787 07979718427

athplumbingheating@gmail.com

P J Cole Plastering & Brickwork

- ✓ Qualified and reliable local bricklayer and plasterer
- ✓ All types of plastering, floor screeds, artexing/plastering over artexed ceilings, coving, tiling, garden walls, patios and extensions undertaken
- ✓ Fully insured
- ✓ No job too small
- ✓ References available
- ✓ Quotations available upon request

**Please contact 07771 865621
or 01635 253300 for further
information**

Birds in Autumn

The blackbirds are fighting for berries in trees;
There's not many left now from what I can see.
A few which have fallen, in clumps on the ground,
Bring squawks of aggression with each berry found.

The last one has gone, not a speck on the lawn.
So birds disperse slowly, annoyed and forlorn.
Perhaps there's another tree not far away,
Where troops re-assemble to fight a new day.

Up high on the wires, lines of birds congregate.
They have to fly South now, before it's too late.
Nervously chattering, soon they must fly;
Driven by instinct, they don't question why.

Finally, one or two take to the air,
Followed by waves, as they all disappear.
Imagine their journey, with hazards and storm.
We wish them God speed to arrive safe and warm.

Moyra Harkness



ABOUT

Hannington & Green offer a wide range of electrical services in domestic, industrial and commercial installation, data installation, inspection and testing, and property maintenance.

SERVICES

- Electrical Installation
 - Data Installation
- Inspection & Testing
- Property Maintenance
- Office Design & Partitioning
 - Building Services

CONTACT

01635 285354

info@hanningtongreen.co.uk

Providing financial planning and wealth management for private clients since 1979



CHARTERED FINANCIAL ADVICE & WEALTH
MANAGEMENT SERVICES

www.essential-wealth.co.uk

01488 669840 enquiries@essential-wealth.co.uk

St Martin's CE Primary School



ST MARTIN'S SCHOOL ALTAR FRONTAL

At St Martin's we have a tradition of holding a school Eucharist service each term. During these services, we have a very special altar frontal that we use which has been added to over the years. Each time there is any addition to the frontal, the date is also added. Some of these dates are rather tricky to spot so the children have to look really carefully!



The frontal was created in 2004 when Year 6 pupils designed and worked on the central motif, showing St Martin's torn cloak and his soldier's sword, turned upside down to become the cross which was to rule his life.

In 2005, the addition of a vine with bunches of grapes was included in the design. Both green and purple were used and the embroidery of the leaves was completed by the children.

The next items to be added in 2006 were doves—blue was used for the sky and white for each dove. Two different doves can be seen. The first is from the Old Testament and can be seen carrying an olive twig in its beak to the ark after the flood. The other dove, winged and hovering, is descending on Jesus at his baptism in the Jordan before his ministry commenced.

In 2007, the school was visited by Bishop Trevor to take the Eucharist. To mark this occasion the mitre and crozier were added in gold. In 2008, to balance the bishop's symbols, a chalice and paten, which are items used in the Eucharist, were added. Again, the designs used were created by the children.

In 2009 the school celebrated its 175th Anniversary, so this time the design was a reproduction of the banner used on all the letter headings which was created by one of the governors.

The flowing river of life was added in 2010, along the bottom edge of the frontal. Bulrushes on each side and silvery fish in the river were also part of the river design.

The colours used in each addition have been thought about very carefully. Each colour used represents a different aspect of the liturgy.

RED denotes a martyr.

GREEN denotes Ordinary Time, frequently in the Trinity season.

PURPLE is used in the seasons of Lent and Advent, which are both quiet, penitential seasons leading up to Easter and Christmas respectively.
BLUE for feast days associated with the Blessed Virgin Mary.
WHITE for other festivals and particularly during the Easter and Christmas seasons.

GOLD is often used, with white, for festivals.

Although the children who were involved in creating our altar frontal have now left St Martin's school, it is still incredibly special to us and the children enjoy seeing it at each Eucharist and knowing the story behind it.

We welcome any members of the school and wider community for our Eucharist service which we hold termly. Please do contact the school if you would like the date of our next service.

For more information on St Martin's School, please visit our website at www.st-martins.hants.sch.uk

or email the school at adminoffice@st-martins.hants.sch.uk

louise benson mobile hairdresser

01635 38041 ANY TIME

quality hairdressing with a personal service

CONVENIENT
**HW
CLEANING
SERVICES**
CLEANING
SOLUTIONS

Please call: 0791 7702257

- Mobile professional detailing and valeting for all vehicles
- Pressure wash treatments for driveways and patios
- Carpet and upholstery cleaning
- Domestic / Commercial / End of tenancy cleans
- Anti-viral and bacterial deep sanitization fog treatments - domestic and commercial

www.hwcleaningservices.com

smarthire
— vehicle rental —

01635 552200

SmarthireVehicleRental.co.uk

Third Street, Greenham Business Park,
Newbury RG19 6HW

- CARS
- VANS
- MINIBUSES
- TRUCKS

Arthur A Beaver Ltd

ESTABLISHED 1909

**Building Contractors
Heating and Sanitary Engineers**



INSTALLATIONS
REPAIRS
MAINTENANCE
SYSTEM UPDATES
BOILER CHANGES
QUALITY WORKMANSHIP
& MATERIALS
ALL ASSOCIATED
BUILDING
WORK UNDERTAKEN
INCLUDING
ELECTRICAL WORK
DOMESTIC & COMMERCIAL
FREE ESTIMATES & COMPETITIVE PRICES

Tel 01635 253240

Registered with the
 Society of Homeopaths

FEEL BETTER

Homeopathy and Bioresonance for Women
Lydia Renouf
BA (Hons), DIP, LCHE, ITEC, RSHom
*Lydia is a fully qualified homeopath and
bioresonance practitioner.*

Homeopathy and bioresonance are non-toxic
healing methods which can be used alongside
conventional medicine to relieve symptoms of:
anxiety and low mood ~ headaches and hot flushes
~skin problems

Consultations are offered online
and in-person in Newbury.

www.lydiarenouf.com
lydiarenouf@outlook.com



Aardvark

PROFESSIONAL OVEN AND
CARPET CLEANING SERVICES

AARDVARKCLEANINGSERVICESLTD.COM
07783 810806

Megan @ Barking Boutique



Professional Dog Grooming

**Patient and Caring service
for all breeds**

Clipping, Hand stripping, Scissoring,
De-Matting, Bathing, Nail & Ear care

Megan Kemp – 07551508398
megankempgrooming@yahoo.com

Windfield House, 3 Byeways, Highclere,
Berkshire, RG20 9PA

NORTH WEST HAMPSHIRE CONSERVATIVE ASSOCIATION HIGHCLERE AND EAST WOODHAY BRANCH **ANNUAL SAUSAGE AND MASH LUNCH**

Rt. Hon.Kit Malthouse MP will be present

Secretary of State for Education

Saturday 19th November

12.30 2.30 p.m.

Contact – Molly 253264

Graham Falconer 253144

£15. (£6.00 children and Young Conservatives)

Mark Humphreys | Associates Architecture + Interiors

Planning Applications
Listed Building Consents
New Build and Restorations
Building Regulations Drawings

With experience in all sectors of the industry, please feel free to contact us no matter how big or small your project

07743 448 425
mhumphreysassociates@gmail.com



CGI of recent barn conversion - granted planning consent


honesty
bakers & makers

Cookery School

Honesty Cookery School is situated in the peaceful village of North Sydmonton, a few miles from Newbury. It offers a relaxed environment, where guests can enjoy a variety of cookery and craft courses. Check out our website for information on our latest courses or to buy a gift voucher for family or friends.

www.honestygroup.co.uk/cookery-school



email: cookeryschool@honestygroup.co.uk

Mown & Grown

Landscaping ~ Tree Surgery ~ Garden Maintenance

- Hedge cutting
- Tree work
- Grass cutting
- Garden maintenance
- Fencing
- Fully insured

for a free quotation call 01635 745 060

MownAndGrownNewbury@Gmail.Com ~ Visit our website: MownAndGrown.Net

Letter to the Editor

Important Update About Woolton Hill Village Market

Due to increased personal and work commitments, the four current members of the Woolton Hill Market Committee will be resigning at the end of this year. Therefore, if the market is to continue, it will be necessary to find a new committee to take over the running of it. We will of course be happy to provide support to the new committee for the first three markets in 2023: January, March and May, however the last market we will be fully responsible for will be our Christmas event on the 23rd November 2022. If, however, we do not have a new committee in place by the end of 2022, then the November market will be the last for the time being.

We are therefore asking for members of our community to come forward and they will need to take over the organising role from us with effect from 1st January 2023. Anyone looking to do this can contact us on whvmarket@gmail.com. If you, or anyone you know, would like to take this on, please do get in touch, or pass on our details.

As a team we are very proud of how we have grown and evolved the market since we took it on and the significant funds we have raised for local charities and good causes, as well as giving a wider group of producers and artisans the opportunity to meet their customers and sell direct. We have also attracted a new audience with kids' competitions, seasonal treats and entertainment.

We really hope that a new group will enthusiastically pick up the reins and continue to facilitate this important event in the village calendar.

Woolton Hill Village Market team

WOOLTON HILL

VILLAGE MARKET

Visit us at www.whvm.co to find out more about what we do


THE VILLAGE ACUPUNCTURIST

Tracy Smith

BSc (Hons) Acupuncture
LicAc MBAC

Tel: 07880 352827

www.thevillageacupuncturist.co.uk



Everyone deserves to feel amazing!




At Maple Aesthetics we are passionate about enhancing your natural beauty.

We don't believe in a 'one size fits all' approach – beautiful faces require discrete and specific aesthetic design to enhance the way you look, not change it.

Whether your concerns are fine lines & wrinkles; uneven skin tone; acne scarring; sun-damage or pigmentation, we work with you to create a bespoke treatment plan to meet your individual needs.

Set in the grounds of a private property in the picturesque village of Woolton Hill discretion is guaranteed.

Get in touch for your complimentary no obligation consultation to discuss how we can make you feel AMAZING!

 www.mapleaesthetics.com
 07799 643040
 

Pressurized hot water system?

Megafluo, Ozo, Ariston, Dimplex, Heatrae-Sadia, Tribune, Santon, Gledhill etc
All manufacturers recommend these systems are serviced regularly by qualified specialists



To book your service and ensure good safety and efficiency contact your local expert

Kevin Pearson Total Pressure Ltd.

New installation a speciality.

07971 250799 01635 253975 totalpressurelimited@gmail.com

THE HIGHCLERE
RED HOUSE

EAT IN OR TAKEAWAY




Full Menu & Pizza Menu
Tuesday - Saturday 12-9pm
01635 255 531
www.thehighclereredhouse.com

KEITH LAWRENCE

KITCHEN BEDROOM & BATHROOM INSTALLATIONS



Planning to Completion
Traditional & Contemporary

FREE QUOTATIONS 01488 608789

3 Ermin Street, Stockcross, Berkshire RG20 8LG
www.lawrenceinstallations.co.uk 01488 608789




Penwood Nurseries



Thousands of different hardy trees, shrubs, herbaceous perennials, roses, conifers, fruit, climbers, ferns and grasses are always available.

A family run business. Most of our stock is produced on site and we are happy to help you find just what you are looking for.

enquiries@penwoodnurseries.co.uk www.penwoodnurseries.co.uk
The Drove, Penwood, Newbury RG20 9EW
01635 254366

RJ Lampard & Company Ltd

A family run business Est 1976



- Specialist Drainage & Ditching Works
- Road Repairs and Road Construction
- Civil Engineering Works - Concreting etc
- Own fleet of plant and machinery
- Fully qualified and experienced operatives

For further information please call:-
01635 253137 / 07768 201370 or email: rj@rjlampard.co.uk



EWPC Report submitted by Amy White (Secretary)

The East Woodhay Neighbourhood Plan (NP) is now undergoing independent examination (the penultimate stage in its legal journey). The examiner is following a legal review process stipulated by the Town and Country Planning Act 1990. This is a very detailed legal review with the examiner being obliged to determine that each policy in the NP complies with the Basic Conditions specified by planning legislation.

To enable the examiner to perform this detailed review she has recently spent time touring the whole parish, walking our defined Key Views, visiting the specified community facilities, green spaces and any location highlighted in the NP. The examiner will generate a comprehensive report stating if the NP meets legislation, if modifications are required and if it can move to the final stage, which is a referendum. The NP will need to be modified to meet the examiner's recommendations. The examiner will publish the recommendations soon to the Parish Council and the community.

TT Garden Care
Private & Commercial Maintenance
Hedge Cutting - Lawn Care - Fencing - Small Tree Work
Turfing - Weed Control (NPTC Qualified)
Free estimates on request
Trevor Thomas
T : 07949 995658
01635 865604
E : tt4gardencare@btinternet.com

Wonders with Wood
Hardy's Custom-Made Carpentry & Joinery

Chris Hardy
Bruan Road
Newbury

07872124367
chris.hardy72@gmail.com

Are Traffic Calming Measures on Woolton Hill Road Effective?

On the 20th September we conducted a project with St Michael's School Burghclere, year 11 GCSE Geography Students about 'Whether Traffic Calming Measures on Woolton Hill Road are Effective'. This involved surveying the traffic calming measures between the Woolton Hill recreation ground and Mount Road; carrying out a vehicle flow count in that area; and surveying parents from the Junior School about how effective they feel the measures are. Five pupils and two members of staff were on site from 1.30pm to 4pm. The speed limit here is 30mph.

The findings from the research group who conducted a series of questions to 26 pedestrians, make for very interesting reading. All of those who responded are car drivers, who regularly drive through the village.

What made them feel unsafe using the path?

54% felt that cars are driving too fast, 15% felt safe, 15% path too small, 7% should be a lollipop lady, 7% no comment

Other suggestions for speed limits:

42% should be a 20 mph speed limit, 35% needs to be slower during school time, 23% no comment

According to our Speed Indicator the facts from the day are as follows:

Between the hours of 07.00 and 16.00, 721 vehicles passed the SID of which 65 vehicles were exceeding the 30 mph limit or 9%.

The peak traffic flow was between 09.00 and 10.00 when 112 cars passed the unit and 13.00 -14.00 when 115 cars passed the unit.

The maximum speed recorded was 40 mph at 08.20 on the 20.9.22.

Submitted by Martin Hainge from EWPC. Thank you Martin and the team for this interesting project.



Woolton Hill & District Gardeners' Club



Seed-Hunter and Plant-Hunter – Anthony Powell and Charles Darwin

I wonder how many of us, particularly when embarking on a new interest or hobby, consider how opportunity and circumstance might have led us in a different direction. If given the chance, would we have grasped an opportunity and headed for adventure. This is exactly what our latest Speaker, Anthony Powell, did when he joined a 10-week seed-hunting expedition to Kashmir in 1983 with fellow explorer Chris Chadwell on the journey of a lifetime. I often find at our meetings, that my brain is filled with images, ideas and questions that need answering and as soon as I heard the phrase seed-hunter I was hooked. The sense of anticipation was immediate!

The project in the foothills of the Himalayas was funded by sales of seed packets, which would contain the actual seeds the plant-hunters would be collecting. The expedition was gruelling; travel by donkey in sweetly scented cedar forests and on rocky alpine terrain, keeping meticulous records of the plants, where they were found and how the seeds were collected. Gentians, Salvia, Anemones, Saxifrage, Aquilegia, Poppies, Orchids, Primulas, Bergenia, Alliums and Tulips were all part of the collection. These are all plants we grow in our gardens today, but 40 years of plant breeding have given us more colourful plants better adapted to the conditions, pests and diseases found in our climate, all a consequence of the wider gene pool found in seeds from other places.



Seed collection for agricultural reasons has a long history, but seed and plant collecting for interest and discovery is different. A newer science, used by Darwin on his travels to the Galapagos Islands in 1835 where he studied different animal and plant species and collected plant specimens. In total, he collected 173 different plants, about one quarter of the islands' known flora. As many of you will know, Darwin has a long association with the town of Edinburgh and recently, a researcher at the Royal

Botanic Gardens Edinburgh (RBGE) found two specimens of the borage family collected by Darwin on his expedition. I think this is why I was so excited by the title of our recent Gardeners Club talk because I have had the privilege to see and photograph the two borage specimens collected by Darwin in the herbarium at RBGE as well as observing many other plant specimens and seeds of different types. Undoubtedly, this was the most exciting horticultural experience I have had, and I can only imagine how exciting it must have been for Anthony to be part of that expedition to Kashmir in 1983. You may be interested to know that RBGE still send botanists out to different parts of the world today on plant-hunting and seed-hunting expeditions and they are still discovering new plants. RBGE is only one of 1,775 botanic gardens around the world and if only half of them are still plant-hunting or seed-hunting and holding specimens in herbaria this is still a vast collection of seeds and plants. Is there still time for me to become a plant-hunter?

Lorna Rains

Handy4Jobs

- Painting Decorating & Tiling
- Kitchen & Bathroom Fitting
- All aspects of Gardening & Fencing
- Window Cleaning, Facias & Guttering



General DIY & Gardening ~ Wayne Murkett, Handyman
07796813580 ~ 01635 31016 ~ 07796950639

Home and Property Maintenance and Repairs

- *Local professional family run business*
- Internal and External decorating
- Kitchen and Bathroom fitting and tiling
- General building maintenance & repairs
- Fencing, decking and patios
- No job too small



*Because everyone's
home is their castle*

www.highclerehandyman.co.uk

Call for free quotation on 07812 135045
or email: highclerehandyman@gmail.com



audrey robinson
garden design

Professional, experienced
and reliable

Garden Design

Border Design

Border Maintenance

01264 738580

07920 425704

www.audreyrobinsongardendesign.co.uk

Airport Transfers



Professional service in luxury cars to anywhere
in the UK for Business & Pleasure.

- Meet & Greet in the terminal, no waiting for shuttle buses
- Fully licensed, DBS enhanced checked
- Door to Door service, leave your own car at home
- Help with luggage
- Competitive prices
- All cards accepted

'Don't drive home tired, let us drive you in comfort and style'

Email: glntransfers@gmail.com

www.gln-transfers.co.uk

Tel: 07747 800707 or 01488 648719



WINDING WOOD VINEYARD

Open to small parties
for tours and tastings
from May to October

www.windingwoodvineyard.co.uk | hello@windingwoodvineyard.co.uk | 07798 885050



- Tree Surgery
- Hedge Cutting
- Stump Grinding
- Fencing
- Landscaping
- Logs, Woodchip & Mulch

01635 254771
www.lopit.co.uk



the Alexander Technique

Relieve back & neck pain
Enhance health & well-being
Improve posture & stamina

for lessons and courses:

Judith Turner MSTAT

01635 253981

07771 896696

[judeturner7@gmail.com](mailto:judgeturner7@gmail.com)

www.jt-alexandertechnique.co.uk

Experienced, qualified

TUTORS

English, Mathematics

Sciences, Languages

History, Computing

English as a foreign language

All ages, all levels

On-line lessons available

telephone 01635 253942

email: susan.trinder@googlemail.com

MATTHEWS RESTORATION

EST. 1978



Antique and Modern Furniture Restoration
French Polishing Specialists
Handrails, Kitchen Work Tops, Doors etc

✉ brian@matthewsrestoration.co.uk
☎ :07768041922 | 01635 38678

www.matthewsrestoration.co.uk

Light & Day Electric

Part-P & 17th Edition qualified

New installations~New circuits~Rewire Consumer unit replacement
Extend Circuits~Lighting~Garages~Outside Buildings

Smoke alarms~Fault Finding

For all your electrical needs & free estimate

Phone Jeremy 01635 278 485 07885 985 275

Village Wine Quiz



Saturday 26th November 2022

8.00pm start

Preceded by the East Woodhay Society AGM
at 7pm

**At St Thomas Church Hall
Woolton Hill**

Tickets £12.50
includes cheese supper
Reserve your place or
table from Mark Rand
250898 or
eastwoodhaysociety@gmail.com



Wine Quiz

We are delighted that we will be having the Wine Quiz on the evening of Saturday 26th November at St Thomas' Church Hall, Woolton Hill. The quiz starts at 8.00pm, following the East Woodhay Society AGM, which begins at 7pm.



For those who have not been before to this popular event, the format of the evening is that there are eight different rounds of wine tasting. We are grouped on tables and the idea is to try and guess the correct wine from a choice of three, which are convincingly and eloquently described from the front, and then to also estimate the price.

The price of the evening is just £12.50. Please send me an email to reserve your place or, if you already have a group coming, secure your table (up to 8 people). The price of the ticket also includes cheese and bread to eat with the wine which remains at the end of the evening.

Your Community Society

What would you like from your local community East Woodhay Society? This is your chance to be involved. Would you like to lead the society or be part of the committee influencing on direction? We need new people so that it has fresh ideas. Please contact me if you are interested.

Please also come along to the AGM on Saturday 26th November at 7pm.

Woodhay Walkers

Our walking group continues to go from strength to strength as we enjoy the fresh air having a chat as we walk in the local area. If you fancy joining us then just come along at 10.30am on one of the Fridays listed below and wear suitable footwear. Not all information is known at the time of writing so please see the WooltonHill.com website or send an email to woodhaywalkers@gmail.com.

Friday 28th October – 10.30am walk at Hampstead Marshall – email for details

Friday 4th November - a 3 mile walk starting 10.30am from Woolton Hill Church Hall (no stiles)

Friday 11th November – 10.30am walk at Yattendon - email for details

Friday 21st November - a 4 mile walk starting 10.30am from Woolton Hill Church Hall (no stiles)

Friday 28th November – 10.30am walk at Hannington - email for details

Mark Rand – Chair EWS

Phone – 07974 451721

Email – eastwoodhaysociety@gmail.com

Website: www.wooltonhill.com

The Rectory, Woolton Hill

Dear Friends,

Already it seems quite some time since our beloved Queen Elizabeth II died. The moving scenes of her lying in state and her funeral marked the movement of history; thousands upon thousands gathering in Edinburg and London, and many millions following on television as never before. How quickly our usual routines have come back into play and life goes on.

In November there will be another reminder that the Monarchy has moved on. Remembrance was an important time for the late Queen Elizabeth II. She was committed to the armed forces and took so very seriously her duty towards them. She was always a striking figure laying with solemnity the first wreath at the Cenotaph on Remembrance Sunday, leading the nation in commemoration and thanksgiving to those who gave of themselves in conflict past and present. The Queen had served in the Second World War, in the ATS (Auxiliary Territorial Service) learning to drive and maintain military vehicles. So she connected us with her span of life and her own service to that war and all conflicts since. Her support of the military was both personal and credible, and her presence as Queen at the Remembrance Parades gave significance and reassurance to military and nation alike.

My own late mother would have been 100 this year and was in the same generation as the Queen. She also served in the ATS during the war; stationed in Kidderminster she didn't meet Princess Elizabeth or learn to drive, but she did learn office skills which she used well in later life. It was an important formative time for her, as it was for so many of that generation.

But generations move on and such direct connections with the Second World War are reducing. I am sure we will miss our beloved Queen Elizabeth II this Remembrance-tide; but instead we will sing 'God save the King' as King Charles will lead us in our national annual Remembrance. I am sure he will also do so with equal sincere solemnity, and his own military service will give a different link to our military history.

Do join our Remembrance this year: Remembrance Sunday is 13th November and we gather for an Act of Remembrance at the Memorial on East End green at 10.55am; and in the afternoon at 3.30pm in St Thomas' Church, Woolton Hill, for a Remembrance Service with music led by East Woodhay Silver Band.

'God save the King'
Canon Christine

From the Church Registers: September 2022

Wedding: may God bless their life together		
3rd September	Lee Elliott & Carla Heaver	Highclere
Burial of ashes: may she rest in peace		
26th September	Mary Robinson (Robin) Hambro	East Woodhay
Memorial Service: with thanksgiving for their lives		
26th September	Mary Robinson (Robin) Hambro	East Woodhay
29th September	David Frederick Maclaren Selby	East Woodhay

NORTH WEST HAMPSHIRE BENEFICE

Ashmansworth + Crux Easton + East Woodhay + Highclere + Woolton Hill
...making Christ known in our communities

Church Services NOVEMBER 2022

Welcome! Service details are correct at time of publishing, any necessary changes will be posted on church noticeboards.

SUN 6th <i>3rd before Advent</i>	All Together Matins Parish Communion Evensong	Woolton Hill Highclere East Woodhay Ashmansworth	9.30am 11.00am 11.00am 6.00pm
SUN 13th <i>Remembrance</i>	Holy Communion (<i>Trinity 22</i>) Act of Remembrance Remembrance Service Act of Remembrance Remembrance Service	East Woodhay <i>Ashmansworth War Memorial</i> Highclere <i>East End War Memorial</i> Woolton Hill	8.00am 10.55am 10.55am 10.55am 3.30pm
SUN 20th <i>Christ the King</i>	Holy Communion Morning Worship Parish Communion Evensong	Ashmansworth Woolton Hill Highclere East Woodhay	9.30am 9.30am 11.00am 6.00pm
SUN 27th <i>Advent Sunday</i>	Holy Communion Benefice Communion <i>with the Bishop of Basingstoke</i>	Highclere Woolton Hill	8.00am 10.00am
WED 9 th Nov Holy Communion Woolton Hill 10.00 am			
<p>Rector: Revd Canon Christine Dale (<i>Rest day: Friday</i>) 253323 Associate Priest: Vacancy Readers: Suki Coe 07990 755323 Horace Mitchell 254677 Reader Emeritus: Rosemary Cahill 253306 Lay Preacher: Angela Myers 254559</p>			

Personal Computers

new - repairs - upgrades - data recovery - no job too small

phone John on 01635 254102

Woolton Hill Church Hall



Everyone knows the Church Hall in the centre of Woolton Hill; it is in prime position between St. Thomas' Church and the Infant School and our busy village recreation ground. Ever since 1911, this welcoming, shared space has served our community and beyond.

This well-presented venue, with its excellent facilities, continues to be used for a huge range of activities, including the Woolton Hill Pre School, which meets there every day during term time. There are also various fitness classes, our regular village market, sewing groups, parties, Brownies and much more.

It takes a committed team to run the Church Hall and keep it functioning well. In addition to the Rector and Churchwardens, the Management Committee is comprised of volunteers who oversee key functions such as bookings, finance, maintenance, and fundraising.

Recently, the Management Committee has been refreshed and as we begin to get to grips with all the operating tasks, we think it is time to publicly thank:

Nick Harcourt (previous Chair, bookings and many other roles) and
John Angle (previous Fundraiser, bookings and many other roles)

Between them, Nick and John oversaw not only the day to day running of the Church Hall, but also introduced an efficient online booking system. They also led a complete renovation and modernisation of the premises, so that going forwards, the venue remains a useful, vibrant space.

In particular, John managed to track down large sums of money through grants that were used for renovation and extension, to create the lovely, modern building that we all like to use today. Besides the refurbishment of the main hall, other projects which benefited from this funding are:

- ◇ Installation of a mobile storage system, substantially increasing available storage space
- ◇ Replacement of tables, chairs, crockery and other items
- ◇ Disabled access
- ◇ Improved car parking
- ◇ Outside soft play surface
- ◇ Loft floor with shelves for storage

- ◇ Motorised loft ladder
- ◇ Roof repairs
- ◇ Sound system with a hearing loop
- ◇ We also received grants to help us through the pandemic.

John and Nick, you both worked tirelessly during your time in post at the Church Hall.

Thank you, so much, not only for all your hard work but also for your enthusiasm and commitment to the lovely building that you have created for us all to enjoy.

Thank you!

Request for help

The Church Hall does not function on booking fees alone but needs income from other funding sources to ensure that the fabric of the building is maintained to the highest standard. We now need someone to take on the role of Fundraiser. So, if you feel that you may be able to help, especially regarding grant applications, please do get in touch with our Chair:

chairwhch@gmail.com

Woolton Hill Church Hall: Management Committee

Ingrid Rankin (Chair), Clare McLaughlin (Secretary), Cedric Cottrell (Treasurer), Beverly and Anthony Clifton (Bookings), Luke Graham (Maintenance), Paul Ashworth (Fire, Compliance & Tech), Trustees: Christine Dale (Rector), Chris Vane (Churchwarden), Bridget Wheeler (Churchwarden)





WALL 2 WALL WILDLIFE PHOTOGRAPHY

Bespoke workshops for people looking for an individual experience.

Love wildlife and want to capture the best images from your garden or the countryside? Beginner days to build confidence in the use of your camera.

andy@wall2wallwildlifephotography.co.uk
Facebook. [wall2wallwildlifephotography](https://www.facebook.com/wall2wallwildlifephotography)



Lock & McDermott Ltd Painters & Decorators

Public & Employers' Ins. held

Qualified with over 30 years of experience

Producing High Quality Interior and Exterior Work in the Private Sector

✉ lynda861@btinternet.com | ☎ 01264 363 267 | Trading Standards Approved
Trader (CRB Checked)

*Antique Silver & Gold
Bought, sold & valued*



*Edward, Reis Silverware,
Ball Hill.*

*Tel. 01635 250505
e.reis@tiscali.co.uk*

M.W. SUTTON

Roofing Specialists
3 Byeways, Highclere

Family business established 1972

Contact Jason Sutton
for free quotations:

Mobile 07770 626230
Home 01635 253951
suttonroofing@yahoo.co.uk

Fully insured to carry out
all your roofing needs

the garden carpenter

decks, fences, gates and sheds
uncompromising quality

for a free estimate contact Duncan Graham

www.thegardencarpenter.com
01635 552301 ~ 0780 8069390

East Woodhay Women's Institute



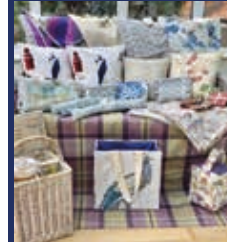
WI Report from June Milsom

Our September meeting took the form of an Auction of produce, mostly from members gardens. Vice President Jackie Milsom acted as our Auctioneer and speedily dispatched everything on the table. Our competition was a flower arrangement in a tea cup which was well supported.

Jackie Milsom went on to win on a 'coin' vote. I am very conscious when I write this it will be very out of date. This is because we meet the day after the magazine 'goes to bed'.

Our next two meetings are 'A lantern show of Victorian Humour and the History of Knitting'.

East Woodhay Artisans @ The Barn Saturday 12th November 10.30am-1.30pm



East Woodhay Artisans are having their Christmas Event at:
The Barn, East End Farm,
East Woodhay RG20 0AB (Opp. St Martin's School)

Enjoy a glass of Mulled Wine and a Mince Pie as you look
at our lovely handmade gifts.

Tea and coffee also available.

All Proceeds to St Martin's Guild for Local Causes

OAKWAY
Time Hopping & Precision

@oakwaytreesurgery
f i

TREE SURGERY | FENCING | STUMP GRINDING | HEDGE CUTTING | Paddock MAINTENANCE

☎ 07979 490697 ✉ info@oakwaytreesurgery.co.uk 🌐 oakwaytreesurgery.co.uk

LOGS, COAL, AND KINDLING

ring Richard 07990 585527

Learn to Draw & Paint Daytime Adult Classes



- 10 week Adult Daytime Art courses - held throughout the year
- Designed for absolute beginners to intermediates
- Warm and welcoming environment
- Pencil, Watercolour and Acrylic (as well as other mediums) every course
- Morning or Afternoon sessions available
- Held at St Marys Church, Shaw



Get in touch for more details or to book your space. or visit our website www.creativeartclasses.co.uk or email studio@creativeartclasses.co.uk



Highclere Osteopathy

Sara Winchcombe Registered Osteopath

Neck, back, any joint pain and sports injuries

07748 185 713

sara@highclereosteopathy.co.uk

www.highclereosteopathy.co.uk

The Schools of Woolton Hill



Exciting new curriculum launched across the Schools of Woolton Hill

The children returned to school in September and are already benefiting from the exciting and purposeful new curriculum that has launched at St Thomas Infant and Woolton Hill Junior School.

Our curriculum is irresistible; promoting a love of learning through exciting, engaging topics and carefully planned tasks which inspire children to want to learn more. Learning opportunities are developed beyond the classroom so that children can demonstrate their abilities in sports, art and music.



We provide a rich curriculum, full of opportunities to read and engage with books from a broad range of genres and authors. Texts are used across the curriculum to develop vocabulary, build narrative skills and foster a wide range of views and diverse opinions about the world around us. Children learn through a variety of real life experiences on day trips, residential visits and theme days.

We create opportunities to learn in an environment of high challenge but low threat, enabling all children to feel included and given access to learning which will make them think. Our enquiry led approach encourages children to ask and seek answers to questions, developing inquisitive minds and a spirit of curiosity.

Does your child start school in September 2023? We have Open Days coming up at both the Infant and Junior Schools:

St Thomas Infants:

19 Oct & 29 Nov

Woolton Hill Juniors:

18 Oct & 30 Nov

To book your place, click here: <https://www.schoolsofwoolton-hill.co.uk/our-events>





Andy Jones
Window Cleaning
07876 028905

Window Cleaning - Gutter Clearance - Fascia & Soffit Cleaning
 Conservatories - Solar Panels

Call or text for a no obligation quotation on 07876 028905

contact@andyjoneswindowcleaning.co.uk

www.andyjoneswindowcleaning.co.uk



Ball Hill, Newbury
 RG20 0NG

www.yewtreecg.co.uk
 01635 255250



☎ 07796 087 626
 ✉ info@autovalet2u.co.uk
 🌐 www.autovalet2u.co.uk

Adi House
Plumbing and Heating

Local Domestic Plumbing and Heating Engineer
 Over 30 years experience
 Fully Insured

All types of plumbing works including:
 Bathroom installations
 Water softeners
 Heating power flushing
 Pipework alterations and installations

07836666092
 Adrianhouse1@gmail.com

The Oakwood Clinic, Highclere
Massage Therapy

- DEEP TISSUE MASSAGE
- AROMATHERAPY
- HOT STONE MASSAGE
- FACIAL MASSAGE
- REFLEXOLOGY
- EAR CANDLING

Monthly Offers. Gift Vouchers. Men by referral only.

Charlotte Piddington (ITEC)
www.theoakwoodclinic.co.uk
 07733442059

RED 76 CHARTERED ACCOUNTANTS & BUSINESS ADVISERS

Jon Dennis FCA

Free initial consultation at a time to suit you

jon@red76tax.com
 01635 783 000
 red76tax.com

- Self Assessment
- Corporation Tax
- VAT
- Bookkeeping
- CGT
- Statutory Accounts
- HMRC enquiries
- Payroll

Berkshire Hampshire Wiltshire Oxfordshire

AREA SWEEP

CHIMNEY SWEEP

A PROFESSIONAL CHIMNEY SWEEP SERVICE
CLEAN RELIABLE BRUSH AND VACUUM
FULLY INSURED MANY YEARS EXPERIENCE

AGA'S
RAYBURNS
JETMASTERS
ALL OPEN FIRES
WOODBURNERS
NEST REMOVALS
OIL FIRED BOILERS
SWEEPING CERTIFICATES ISSUED
CAPS AND COWLS SUPPLIED AND FITTED



CALL DARREN

01635 569195/07900398678
areasweep@btinternet.com

SHAPE UP YOUR WEEK

Burghclere Hall

Monday **Hone 'N' Tone**
Beginners / Interm.

Body Blast! 6.45-7.30pm.
Suits all levels (€6.00)
7.45-8.45pm. (€6.00)

Tuesday **Super Sweaty Step!**

Help achieve your 7.30-8.30pm.
fitness goal. (€6.00)

Thursday **HITT!**

Torch calories with 7.30-8.30pm.
this energetic class (€6.00)

Fully Qualified Instructor, Sally
01635 278680

National Women's Register

NWR

Following the August break, our new programme commenced with a most enjoyable evening party deferred from July, our usual party date. We caught up with news of holiday activities, stretched our minds with a thought-provoking quiz and thoroughly enjoyed a delightful buffet supper prepared by our host with members' support. We appreciated being back with lively minded friends and look forward to our interesting and challenging future programme.

Our book discussion meeting in September took place complete with afternoon tea, homemade apple cake and ginger biscuits. We were not very inspired by the book list from Head Office although two from the list were read by some members:

HUNGRY by Grace Dent, a food writer and critic. The protagonist was from a working-class family in Carlisle in the 1970s and 80s who, although bright, didn't excel at school, was 'hungry' for success and bluffed her way into the media circus. The book included bad language, and our members did not identify with the subject.

BECOMING by Michelle Obama. She was from a comfortably-off family background, worked hard at school and became a lawyer. She met Barack Obama when he was a law intern. His background was mixed-race, absent father and part-raised by his grandparents. She felt suffocated by life in the White House. She had a passionate interest in race and feminism. They both used their fame to promote causes important to them.

STUDIO CLEARANCE!



50% off

All paintings and prints for two days only!!

Saturday and Sunday November 19th and 20th 10am – 4pm

at THE OLD PLOUGH STUDIO,
NORTH END, RG20 0AY

MARIO'S PLUMBING

25 years' experience

- gas/oil boiler servicing and replacements
- power flushing
- central heating and general plumbing

GAS-SAFE registered

Telephone Mario
07967123819

R. D. RUTTERFORD

OIL FIRED
BOILER
MAINTENANCE

MEADOW VIEW
BROAD LAYINGS
WOOLTON HILL
NEWBURY
BERKSHIRE RG20 9TS

01635 253257
Mobile: 07771 610145



Webbs 102 Years Of Service



In 1920 Leonard Webb took on the role of Clerk and Sextant of St. Martins Church at an annual salary of £20. This was ratified at the Easter 1921 vestry meeting. Len worked at Sungrove and lived with his wife Ellen in Sungrove Cottage with a growing family; Leonard (Jim), Desmond, Marion, Cicilly and Kate from 1923 until 1942. The church was a part time job which entailed cutting the grass in the churchyard with a scythe, trimming the hedges, digging the graves and winding the clock twice a week; there are three weights the heaviest being 5cwt (254Kilos). He was Captain of the Tower which entailed maintaining the bells and recruiting a team of ringers. He taught local youngsters and his own family as they became early teenagers.

The heating system was installed in 1930 and was fired with anthracite so the boiler had to be lit and stoked before the services in the winter to ensure a warm church for the service. Electricity was not installed until 1946. Ellen cleaned the inside of the church and played the organ for the Sunday School which the children attended. As they became older, they sang in the choir. Marion played the organ when the regular organist had an extended break. Kate was a

church warden from 2004 for six years. During the summer months Len would finish work and after tea go up the church and work until it was dark. At the weekends all the family used to go up and join him. Sadly, Len died in 1956 at the early age of 62 and his older son Jim took over the role. Ellen retired from her cleaning role and Jim's wife Doris took over. Jim carried on much as his father but I believe by this time a motor mower was used to cut the grass and in the mid-1960s the heating system was converted to become oil fired which must have lightened his workload considerably. However, one of his tasks was daunting, the lighting had been secured under the roof beams and Jim climbed up a long wooden ladder to change the bulbs when required. Health and safety would have a fit today. Jim also took on the tower captain's responsibilities and at one time there were members of the family ringing four of the 6 bells; my father and Jack Crocker the local chimney sweep rang the other two. They now listen to our efforts today from the churchyard. Jim sadly died in 1989 aged 66 and his son Bill took over the tower captain job and was eventually assisted in the clock winding duties by two of the bell ringers; the clock has now been fitted with automatic winders.

A benefactor gave money towards the upkeep of the churchyard and this is now carried out by an outside contractor. Graves are dug by a mechanical digger. Doris continued cleaning the church aided by her daughter Margaret until 2013 and she passed away in October 2017 aged 96. Bill continues his tower captain duties and he and Margaret still ring the bells. This is a remarkable length of service by three generations of one family who have served seven Rectors over this period. A remarkable feat which I am sure will never be repeated. This outstanding service should be recorded in some way and inspiration to us all.

Norman Powers

OVEN SOLUTIONS

Put That Sparkle Back Into Your Oven

- ✦ Full non-caustic deep clean
- ✦ Cleans ovens, hobs, extractors & barbecues
- ✦ Replacement filters, seals, bulbs & elements
- ✦ Non-franchise established 14 years
- ✦ Child, pet & eco friendly



see our reviews
on yell.com

Peter Hudson 07733 253 563 Oven-Solutions.co.uk

ITWISE

YOUR LOCAL IT SUPPORT

**10 Years Personal Experience and
4 Years Commercial Experience in IT Support**

Desktop and Laptop Repairs and Assistance or
Phone, Internet and Home Office Support and Setup.
No Job is Too Small

NO FIX, NO FEE GUARANTEE



Call Isaac on 07707409865



isaac@theitwise.co.uk

VG Furnishings. The Curtain Specialists.



01635 867804 • www.curtainspecialists.co.uk

Thyme

The food you would have cooked

- ❖ Can I help you fill your fridge or freezer?
- ❖ Freshly made, nutritious food for busy people.
- ❖ Menu of main dishes and puddings to suit an informal supper with family or friends.
- ❖ Menus also available for dinner parties, family or special celebrations.
- ❖ All dishes made to order and delivered locally.

Rhona Everard

Mob: 077969 46664

Email: thymehomecook@gmail.com

Web: www.facebook.com/thymehomecook



Building & Construction

- Loft Conversions
- Extensions
- Kitchens
- Bathrooms
- Refurbishments
- Patios
- Double glazing

Small selection of building work we undertake

For all your building projects and free estimate

Call Jeremy

01635 278 485

07885 985 275

www.watermill-sounds.co.uk



A D CARPENTRY & BUILDING

- Joinery
- Built-in storage
- Doors and windows
- First and second fix
- Rotten wood
- Refurbishments

Free estimates, competitive prices -
call Andrew **07979 455903**



Book Online Get the App
WWW.WELLNESS-PILATES.CO.UK
07944646357

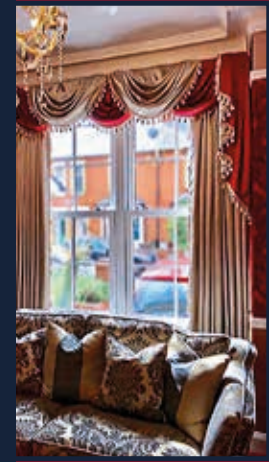
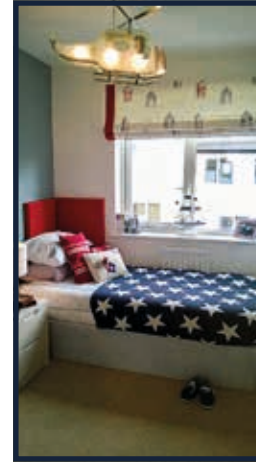
WOOLTON HILL BUSINESS CENTRE
TRADE STREET
RG20 9UJ

Sharon Stretton Designs

Bespoke Soft Furnishings & Interior Design

- Curtains & Blinds
- Tracks & Poles
- Upholstery
- Mood Boards
- Fabrics & Trimmings
- Cushions & Headboards
- Bed Valances & Throws
- Fitting Service

Showroom:
Unit 5 New Mills Industrial Estate,
Post Office Road, Inkpen, Hungerford,
Berkshire, RG17 9PU
Tel: 01488 669267



Woolton Hill Post Office and Stores

Post office, Newsagent, National Lottery
Off-Licence & General Stores

Post Office Open:

Monday to Friday 9am-5.30pm

Saturday 9am-12.30pm

We also hold Euros and Dollars



We also deliver newspapers in
surrounding 4 miles.
Woolton Hill Post Office & Stores
Broadlayings
Woolton Hill RG20 9TR
01635 253463

Poetry? Prose on Steroids!

Join us at the Highclere Poetry Group

At 7.30, December 7th

Westridge Studio, Star Lane, Highclere, RG20 9QS

Come along to this friendly, informal group, and bring a
favourite poem (or two) to read, or have read, or just to listen.

From a limerick to T.S Eliot.

Wine and refreshments provided.
Entry is free, but donations welcome.

On-site parking.



Pure Clean Window Cleaning

also frames, canopies, cladding, conservatories, guttering & soffits

Call Claire or Martin on 01635 523917 or 07958 207451
email kimble@techie.com


The Friendly www.friendlyoilservice.com

Oil Boiler Service Ltd

Fully qualified and insured
oil boiler service & repair specialists

Simon, Nick & Paul

01635 282992





Your local renewable energy specialist

Now installing EV chargers for solar PV

Heat Pump servicing - Mitsubishi Accredited
PV repairs & batteries - MCS/NICEIC certified

Contact Paul Gibbons on 07791 364408
or visit www.greenwiresolar.co.uk



Greenwire Solar, October Cottage, Broadlayings, Woolton Hill, Newbury RG20 9TT

C & E GROUNDWORKS LTD
Experienced Groundworks & Construction Company In Newbury & Surrounding Areas



- Buildings • Foundations
- Paving & patio services
- Specialists in resin bond
- Turf & Astro turf • Concreting
- Fencing • Landscaping

feel free to contact us today for a FREE QUOTATION

Based in Newbury C & E GROUNDWORKS LTD are a well known company that have a superb reputation for providing a range of groundworks from drainage to driveways.

cegroundworks@hotmail.co.uk 07500986386 01635 34601 www.cegroundworks.co.uk



Bright Sparks Nursery School

East Woodhay Village Hall, Heath End, Newbury (only 4 miles)

We have an **Outstanding** OFSTED report

We have fully qualified teachers including specialists for French, Music, Dance, Football, Fitness and Forest School

Places are offered to children aged 2 - 5 years

Head Teacher: Mrs Cherida Daniel B.A. Hons, Mont. Dip. EYPS

www.brightsparksnursery.co.uk Telephone: 01747 870432 or 07768123139

PAUL S. WALDEN
Painter & Decorator

For all your painting and decorating requirements



City & Guilds Qualified
Interior & Exterior
25 years' experience
all work guaranteed

Tel no.: 07802 578934

Redlands Property Services Ltd

Specialist in All Aspects of Oil Fired Heating and Plumbing

New Boiler Installations, Servicing, Breakdowns, Oil Tank Replacements
Underfloor Heating, Mains Pressure Hot Water Cylinders Installations

All Work Guaranteed/Free Quotes

Please call : **James Mead**

OFTEC Registered Company C8170

Tel 01189 810 310 / 01635 282 172 Mob 07795 063 067
www.rpsllp.co.uk email boilersupport@rpsllp.co.uk



Woolton Hill Preschool

www.wooltonhillpreschool.org.uk

The Church Hall, Woolton Hill, Newbury

30 years of experience, Achieved 'Good' in 2016 Ofsted report

Secure, fun & caring environment

Friendly, loyal & Qualified staff

Strong curriculum based learning through play

French, Debutots & Talking tots at no extra cost!

Places for ages 2-5, government grant available

Breakfast club available for all children up to age 8

The staff walk the children to the Junior and Infants school

Flexible term-time hours. Mon-Thurs 8am-3pm Fri 8am- 12.30pm

Contact on: 01635 254721 Or email at: hello@wooltonhillpreschool.org.uk



TAPESTRY
ONLINE EXAMINING
JOURNAL



FALKLAND GRANGE CARE HOME

NEWBURY
A PORTHAVEN CARE HOME

Care with compassion

See the difference Porthaven makes at Falkland Grange Care Home

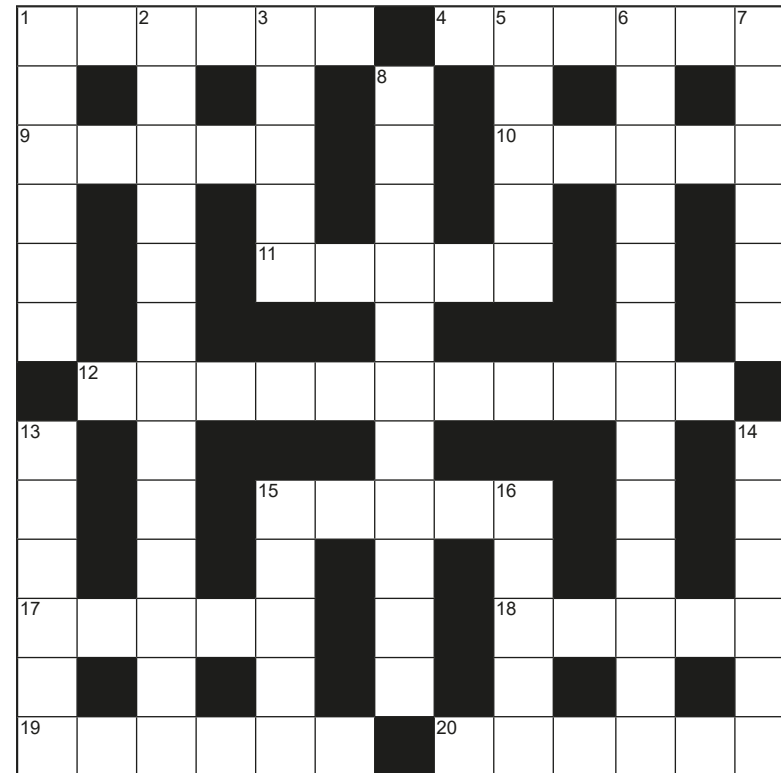
Book a visit at Porthaven.co.uk
or call 01635 926970

NURSING ■ RESIDENTIAL ■ DEMENTIA

Falkland Grange Care Home
Monks Lane, Newbury,
Berkshire, RG14 7RW



237



Answers crossword no 236
Across: 1 Become, 4 Russet, 9 Fancy, 10 Dress, 11 Rotor,
12, Pumpkin pies, 15 Resit, 17 Smith, 18 Pest, 19 Solent, 20 Hearts
Down: 1 Before, 2 Consequential, 3 Mayor, 5 Udder, 6 Steeplechase,
7 Tester, 8 Westminster, 13 Ghosts, 14 Spooks, 15 Rohan, 16 Tepee

Across

1. Shy and thirsty? Drink this (6)
4. Look back from top to hard beginning of Lancashire dish (3,3)
9. Water lily means a lot to us (5)
10. A sharp increase in the use of pikes (5)
11. Ed leaves donkeys for years and years (5)
12. I can aid vans that want to travel to Norway, Sweden or Denmark (11)
15. Turn out bin as we need something to wash in (5)
17. Times are hard and ours to enjoy (5)
18. Polecat chases prey he will retrieve inside (5)
19. We hear clam has strength (6)
20. I wager little Raymond will double-cross us! (6)

Down

1. Loans nothing for a bar (6)
2. Hear us moan about our cult as the leaves change (6,7)
3. If he wasn't so shy I'd find him attractive (5)
5. Little sister weighed down by osteoarthritis discovers water in the desert (5)
6. Dreadful leader of country keeps empires in trim (5,8)
7. Stewed about what to wear for a country look (6)
8. Look son, I use corn to make food that an expert would love (11)
13. Understand how to measure depth at sea (6)
14. So powerful, will possibly go the end of play (6)
15. Bails chap who turned to herb (5)
16. Find comfy spot on dangerous mountain ridge (5)

Directory of Local Organizations

24hr Emergency Numbers

Thames Water . . .0845 9200 888
Southern Water (water supply) . . . 01273 606766
Southern Electric . 105 or 08000727282

Age Concern Community Information Volunteer Sarah 07806 659449

Arbor Flora Group . Secretary: Diana Durkin. .01635 635813

Basingstoke & Deane Borough Council01256 844844

member: Graham Falconer (cllr.graham.falconer@basingstoke.gov.uk)253144

Churches

East Woodhay, St Martin'swww.stmartins.church
Churchwardens . . Richard Twallin 253354. . Andrew Colville 254017
W'ton Hill, St Thomas' www.wooltonhill.com/community/church/church.html
Churchwardens. . . Chris Vane 253707 Bridget Wheeler 250729

Defibrillators

There are 5 public access defibrillators in the Parish, WH Church Hall, EW Village Hall, the Rampant Cat, outside St Martin's School, East End and WH Junior School.

Doctors' Surgery Woolton Hill253324

Patient Participation: Rosemary Cahill.253306

Ducklings Fiona Morgan 42080

East Woodhay & Highclere Neighbourcare Volunteer Driving

For transport, collect your prescription or shopping call. . . (01635) 745600
www.ewhneighbourcare.org.uk

To collect your prescription or help collecting shopping call . . 01635 745600

East Woodhay Charities Secretary: Susan Wren 254875

East Woodhay Cricket Club Contact Adrian Batchelor .07810 647618

East Woodhay Flower & Produce Show254114

www.eastwoodhayflowershow.co.uk

East Woodhay Football Club Chairman: Alan Jones 254024

East Woodhay Footnotes Mens Singing Group, organiser Peter Stanley,
07467572341

East Woodhay Local History Society Sec: Christine Dalton . . . 07880 628 114

East Woodhay Parish Council Members:www.eastwoodhay-pc.gov.uk

James Mitchell (Ch) james.mitchell@eastwoodhay-pc.gov.uk. 01635 254747
Susan Cooper. . . susan.cooper@eastwoodhay-pc.gov.uk. . 01635 254149
Graham Dick . . . graham.dick@eastwoodhay-pc.gov.uk . . 01635 255372
Martin Hainge. . . martin.hainge@eastwoodhay-pc.gov.uk . 01635 255793

Directory of Local Organizations

East Woodhay Parish Council continued

Paul Hurst (V.Ch) . paul.hurst@eastwoodhay-pc.gov.uk 01635 254363
Mark Rand. mark.rand@eastwoodhay-pc.gov.uk. . . . 01635 250898
Karen Titcomb . . karen.titcomb@eastwoodhay-pc.gov.uk. . .07974 011065
Andrew Watson. . andrew.watson@eastwoodhay-pc.gov.uk
Amy White (Clerk) clerk@eastwoodhay-pc.gov.uk 07855 275336

East Woodhay Village Hall. Carol Stanley 01635 35859
eastwoodvillhall@gmail.com

East Woodhay Short Mat Bowls Club Contact: Cathy Neller. 255589

East Woodhay Silver Band. Contact: Rosemary Gittins 07917 522180

East Woodhay Society Chairman, Mark Rand 250898
eastwoodhaysociety@gmail.com www.wooltonhill/ews

East Woodhay Twinning Association Helen Allen, Secretary . . 01635 250776

East Woodhay W.I. . Secretary: Pat Gibbs . . .07831 669 220

Hampshire County Council Member: Tom Thacker. . .01962 771863

Highclere Film Club Secretary: Chris Martin . .253461

Highclere Evergreens Leader: Mrs. V. Burge 864584

Litter warden litterwarden@eastwoodhay-pc.gov.uk

MP - Kit Malthouse. 01264 401401

kit.malthouse.mp@parliament.uk. 2 Church Close, Andover, SP10 1DP

National Women's Register Val Burfield 255168

Neighbourhood Watch

Woolton Hill vacant.

North End Jack Castle. . .253537

Newbury Chamber Choir info@newburychamberchoir.co.uk

Nwby. Wkly. News WH Correspondent. Nicole Bentham. . . . 255582

Police Hampshire Constabulary101

PCSO Joshua Revett 18145 joshua.revett@hampshire.pnn.police.uk

The Samaritans. Freephone 116 123

Schools

The Clere 278372

The Clere Community Office 278129

St Martin's East Woodhay CE Primary www.st-martins.hants.sch.uk . 597796

St Thomas', Woolton Hill, Infants. . . www.stthomasinfant.co.uk 253431

Woolton Hill Juniors www.wooltonhilljunior.co.uk 253364

Directory of Local Organizations

- Spectrum** www.wooltonhill.com/Spectrum.html
 Chairman Bob King 253378
 Treasurer Gill Burrows . 254301. . Distribution Chris Vane
 253707
 Advertising Michael Robinson 253004
 Editors:
 Abbie Dando (Jan, Feb & Mar)
SpectrumEditorAbbie@gmail.com 07477 987943
 Mary Gulliver (Apr, May & June)
mary@TheGullivers.co.uk 254567
 Jim Hannington (Jly, Aug & Sept)
seamusman3@gmail.com 07895637611
 Kathy Scott (6pm-9pm Oct, Nov & Dec)
spectrumwh@outlook.com 254756
- St Martin's Guild** . . Secretary: Sarah Leventhorpe 255293
info@eastwoodhayfete.org.uk www.eastwoodhayfete.org.uk
- St Thomas' Handbell Ringers** Nicole Bentham 255582
- 1st Woolton Hill Beavers & Cubs** . . . Contact: . *mo.osborne@btinternet.com*
- Woolton Hill & District Gardeners' Club** Nick Harcourt 253546
- Woolton Hill Argyle Football Club.** . . Jon Dennis . . . *money.whafc@gmail.com*
- Woolton Hill Brownies** . . contact Maggie Russell - *2whbrownies@gmail.com*
- Woolton Hill Church Hall** *wooltonhillhallbookings@gmail.com*
 Clifton, Tile Barn Lodge, Tile Barn, Woolton Hill
- Woolton Hill Pre-School** Nicola Logan 254721
- Woolton Hill Sports Club (tennis, table tennis)** Alison Whitehorn . . . 254391
- Woolton Hill Village Market** Claire and Sally
www.whvm.co *whvmarket@gmail.com*
- Woolton Hill Website** Contact: Mark Rand 250898
www.WooltonHill.com *eastwoodhaysociety@gmail.com*

Spectrum Advert Rates

(with effect from April 2022)

Annual rates—please contact Michael Robinson Tel 253004

For ALL fund-raising events (charity, political, etc) £3 per quarter page b&w, £5 colour

For all commercial and professional advertisements £25 (colour) per quarter page

Invoices are issued once the publication has been sent to print. Please note that advertisements may be altered in size to fit the space available.

Guidance to advertisers including ad sizes and file format:

www.wooltonhill.com/spectrum-guidance

Subscription: £5 per annum

Liberty Garden Buildings



www.libertygardenbuildings.com

Yew Tree Garden Centre,
Ball Hill, Newbury RG20 ONG

01635 255533



**GREENHOUSES
HOME OFFICES
GARDEN ROOMS
ROTATING PODS
SUMMERHOUSES
GARDEN SHEDS**



CONTROL SERVICES
Pest Management & Timber Care

Wasps • Hornets • Rats • Mice • Moles
Woodworm • Ants • Fleas • Flies • Moths
Bed Bugs • Beetles • Cockroaches

Domestic and Commercial

www.pestcontrolberkshire.com

01635 250 852



BALL HILL GARAGE

Car Servicing & Repairs

Air Con Servicing & Repairs, Advanced Engine Diagnostics

Batteries, Exhausts, Welding, Tyres including Advanced Four Wheel Alignment

Hybrid & Electric Vehicles, Servicing & Repairs

Horsebox Trailer Service & Repairs

*Courtesy cars available, manual and automatic. Free local collection and delivery service.
Ball Hill Garage Technicians are fully qualified and regularly attend motor trade approved training courses*



MOT
Cars &
Light
Vans

Tel 01635 253282

enquiries@ballhillgarage.co.uk



MARSH fuels



Heating Oil now available to collect in 20 litre drums

01635 253 253
www.marshfuels.co.uk

H C Marsh (Newbury) Ltd, Ball Hill, Newbury, Berkshire. RG20 0PW

Esseborne Manor Hotel & Restaurant

Family run business offering a warm welcome and the best food in the area.

Daily lunches with canapes & wine

A la carte dinners

7-course tasting dinners

Sunday lunches

Vintage afternoon teas



Perfect for private functions & weddings

Hurstbourne Tarrant SP11 0ER,
www.esseborne-manor.co.uk, 01264 736 444