

October 2021

50p

# *Spectrum*



# Editorial



**H**ello Everyone. Autumn is upon us once again and I am here to herald its arrival, along with the spiders and cobwebs which are diving into our homes at this time. As soon as you think you've cleaned them all out – you spot another one!!! I do hope you greet my editorship of Spectrum with more joy than you do the spiders!

I'm sure you recall Basil Fawlty's (in)famous line: 'Don't mention the War' Well, I would just like to say that I 'Won't 'Mention the Pandemic' – except to say I hope 2021 has treated you all more kindly than the previous year.

I hope you enjoy the reports and information to be found in this issue, and please don't forget to let me know if you have a story or any information that you feel the community would like to hear about in the months ahead.

Notable groups that will be re-starting are Walking for Health, and Beavers in EWWH. For all the details, please see the reports further in.

*Request for November issue* I would love to create a page of loved ones in uniform that fought in any war this century. If you could send me a jpg with just their name and relationship to you, I believe it might make a fitting remembrance issue.

See you soon, Kathy

<https://www.wooltonhill.com/spectrum>

Spectrum is a monthly community magazine serving East Woodhay and Woolton Hill. It is run by a committee of volunteers and is a not for profit publication.

Reports on village activities and articles of local interest are welcomed for publication subject to the discretion of the editor. Copy should reach the editor by the seventh day of the month preceding publication and should be a maximum of 500 words. In the event of pressure for space, the editor reserves the right to reduce the length of the article while attempting to maintain the style of the writer and retaining as much content as possible. The editorial committee accepts no responsibility for the views expressed by Spectrum contributors or for the quality of goods and services provided by advertisers in this magazine.

**The contents of this magazine are protected by copyright and nothing may be reprinted without prior permission.**

Cover: This Year's Flower & Produce Show, See p20.

Do you need your fence repaired or replaced?  
Whether your job is large or small, we can help.

**Local, fully insured, specialist in domestic fencing and gates, shed supply and erection.**

For a free quotation contact Kevin on 07765 443159 or email [kevinjtooze@gmail.com](mailto:kevinjtooze@gmail.com)  
f <https://www.facebook.com/TheFenceMaker>

**City & Guilds NPTC**

**greentips**

- Fully Qualified and Insured
- Tree Surgery
- Planting•Pruning•Removals
- Hedge Cutting
- Stump Grinding
- Woodland Management
- Chip, Mulch & Logs for Sale

T: 01635 254712  
M: 07903 259973  
[www.greentipsuk.com](http://www.greentipsuk.com)

TREE SURGERY  
YOUR LOCAL TREE CARE SPECIALIST

## Airport Transfers



Professional service in luxury cars to anywhere in the UK for Business & Pleasure.

- Meet & Greet in the terminal, no waiting for shuttle buses
- Fully licensed, DBS enhanced checked
- Door to Door service, leave your own car at home
- Help with luggage
- Competitive prices
- All cards accepted

'Don't drive home tired, let us drive you in comfort and style'

Email: [glntransfers@gmail.com](mailto:glntransfers@gmail.com)

[www.gln-transfers.co.uk](http://www.gln-transfers.co.uk)

Tel: 07747 800707 or 01488 648719

## P J Cole Plastering & Brickwork

- ✓ Qualified and reliable local bricklayer and plasterer
- ✓ All types of plastering, floor screeds, artexing/plastering over artexed ceilings, coving, tiling, garden walls, patios and extensions undertaken
- ✓ Fully insured
- ✓ No job too small
- ✓ References available
- ✓ Quotations available upon request

**Please contact 07771 865621 or 01635 253300 for further information**



### ABOUT

Hannington & Green offer a wide range of electrical services in domestic, industrial and commercial installation, data installation, inspection and testing, and property maintenance.

### SERVICES

- Electrical Installation
  - Data Installation
  - Inspection & Testing
  - Property Maintenance
- Office Design & Partitioning
  - Building Services

### CONTACT

☎ 01635 285354

✉ [info@hanningtongreen.co.uk](mailto:info@hanningtongreen.co.uk)

## MATTHEWS RESTORATION

EST. 1978



Antique and Modern Furniture Restoration  
French Polishing Specialists  
Handrails, Kitchen Work Tops, Doors etc

✉ [brian@matthewsrestoration.co.uk](mailto:brian@matthewsrestoration.co.uk)

☎ :07768041922 | 01635 38678

[www.matthewsrestoration.co.uk](http://www.matthewsrestoration.co.uk)

Light & Day Electrics

Part-P & 17<sup>th</sup> Edition qualified

- New installations
- New circuits
- Rewire
- Consumer unit replacement
- Extend Circuits
- Lighting
- Garages
- Outside Buildings
- Smoke alarms
- Fault Finding

For all your electrical needs & Free estimate

Phone Jeremy

01635 278 485

07885 985 275



**GOLD & GREY**  
Elegant English Interiors

INTERIOR DESIGN  
UPHOLSTERY  
CURTAINS & BLINDS  
WALLPAPERS  
FABRICS

Call: 07795 247 142

[Info@GoldAndGrey.uk](mailto:Info@GoldAndGrey.uk)

[WWW.GOLDANDGREY.UK](http://WWW.GOLDANDGREY.UK)

**PAUL S. WALDEN**  
**Painter & Decorator**


**For all your painting and decorating requirements**



**City & Guilds Qualified**  
**Interior & Exterior**  
**25 years' experience**  
**all work guaranteed**

**Tel no.: 07802 578934**






**Your local renewable energy specialist**

Now installing EV chargers for solar PV

Heat Pump servicing - Mitsubishi Accredited  
PV repairs & batteries - MCS/NICEIC certified

**Contact Paul Gibbons on 07791 364408**  
or visit [www.greenwiresolar.co.uk](http://www.greenwiresolar.co.uk)



Greenwire Solar, October Cottage, Broadlayings, Woolton Hill, Newbury RG20 9TT

## OVEN SOLUTIONS

*Put That Sparkle Back Into Your Oven*

- ✦ Full non-caustic deep clean
- ✦ Cleans ovens, hobs, extractors & barbecues
- ✦ Replacement filters, seals, bulbs & elements
- ✦ Non-franchise established 14 years
- ✦ Child, pet & eco friendly



see our reviews  
on [yell.com](http://yell.com)

**Peter Hudson 07733 253 563 Oven-Solutions.co.uk**

# East Woodhay Society



### Walks starting again

We are really pleased to be starting the Walking for Health walks again. These last about an hour, starting and ending at the Woolton Hill Church Hall car park on the 1st, 3rd and 5th Friday of the month.

So, if you fancy a local walk with others just put come with some suitable footwear and join us at 10.30am. We will be walking on 1st, 15th and 29th October.

We have a lovely area in which to walk, and we would love to see you. You do not need to be an EWS member but in these Covid times a booking is required. Please send me an email or see [www.Wooltonhill.com](http://www.Wooltonhill.com) for details on how to do this.

Woolton Hill Parish Field after the hay was cut

### AGM and Charity

The EWS AGM will be on Thursday 11th November at 7pm and will be held by Zoom (I will send out contact details via email). We had hoped to hold the AGM alongside the ever-popular Wine Quiz but with

Covid cases on the rise, it would not be practical to hold an indoor event with many people in close proximity, drinking wine. Hopefully, we will be in a different situation next year and can return to holding this event.

Over the past two years, we have been raising money for Young Children & Children First, a local charity, based in Newbury, which helps young adults who have had a difficult upbringing make the transition to adult life. This is a great local cause and the money raised goes directly to helping young people develop the skills needed for independent life.

We are now looking for another local charity to raise money for and please let us know if you have any recommendations for a charity which has a focus in the nearby area.

Mark Rand – Chair EWS  
Email – [eastwoodhaysociety@gmail.com](mailto:eastwoodhaysociety@gmail.com)  
Website: [www.wooltonhill.com](http://www.wooltonhill.com)  
Telephone – 250898





### FOOT HEALTH CARE

by **PAULA CARTER** Dip CFHP, MPSPract  
HOW CAN I HELP YOUR FEET?

*I'm a fully qualified, accredited and insured foot health practitioner. General foot care and routine problems relieved quickly and painlessly in the comfort of your own home.*

- Nail cutting & filing • Fungal or thickened nails • Ingrown nails
- Painful corns removed • Cracked & dry heels • Verrucae • Athletes foot
- Callus reduction • Diabetic care • Plantar faciitis & heel pain



Call or text 0790 1822 125



## TERRAWERX

- Groundworks, Drainage & Landscape Services
- Sewage Treatment Plants & Soakaways
- Owner Operator Mini Excavator Hire
- Fully Qualified, Insured & Experienced
- For more information or a quotation please contact Matthew - 01635 261551 / 07786 993882 or info@terrawerx.co.uk

THE HIGHCLERE  
**RED  
HOUSE**

**EAT IN OR  
TAKEAWAY**



Full Menu & Pizza Menu  
Tuesday - Saturday 12-9pm

**01635 255 531**

www.thehighclereredhouse.com

### THE 1:1 DIET

by Cambridge Weight Plan

**New  
thinking.  
New  
you!**

"...for  
greater weight  
loss with  
one-to-one  
support..."

Based in  
Woolton Hill,  
covering  
Newbury and  
surrounding  
areas



**Flexible Plans** one-to-one support

Contact **Rebecca Cooke**  
your local Consultant:

tel 07787 316339 email 121dietbycwp@gmail.com  
web one2onediet.com/RCooke

*Antique Silver & Gold  
Bought, sold & valued*



*Edward Reis Silverware,  
Ball Hill.*

*Tel. 01635 250505*

*e.reis@tiscali.co.uk*

## JUMBLE SALE

(In aid of St Thomas' Church)  
Woolton Hill Church Hall

**SATURDAY 6<sup>th</sup> NOVEMBER**  
**2.00 P.M.**

**White Elephant, Books, Bric-a-brac, Toys**

**Jumble to the Hall on the morning of the Sale or phone:**

**Pat Woodage - Tel.No. 46518**

**(Offers of help greatly appreciated)**

## Pressurized hot water system?

Megaflo, Ozo, Ariston, Dimplex, Heatrae-Sadia, Tribune, Santon, Gledhill etc  
All manufacturers recommend these systems are serviced regularly by qualified specialists



To book your service and ensure good safety and efficiency contact your local expert

## Kevin Pearson Total Pressure Ltd.

*New installation a speciality.*

07971 250799 01635 253975 totalpressurelimited@gmail.com



## The Oakwood Clinic, Highclere *Massage Therapy*

- DEEP TISSUE MASSAGE
- AROMATHERAPY
- HOT STONE MASSAGE
- FACIAL MASSAGE
- REFLEXOLOGY
- EAR CANDLING

*Monthly Offers. Gift Vouchers. Men by referral only.*

Charlotte Piddington (ITEC)  
www.theoakwoodclinic.co.uk  
07733442059

## KEITH LAWRENCE

KITCHEN BEDROOM & BATHROOM INSTALLATIONS



### Planning to Completion

### Traditional & Contemporary

FREE QUOTATIONS 01488 608789

3 Ermin Street, Stockcross, Berkshire RG20 8LG

www.lawrenceinstallations.co.uk 01488 608789



## Obituary Gertrude Annie Kingston (nee Brown) 1909-2021

Gertie was born on the 1st February 1909 at Farnborough, Hampshire, to Rhoda and Walter Brown. She had a younger brother Michael. Her earliest memory is her father going off to World War 1 in 1914

While her father was at war the family moved to Aldermaston where Gertie started school. When she was 8 she remembered coming home from school to find her mother crying. Walter had been killed in the trenches just before, what was to be, his first visit home to the family in 1917.

Later they moved to Yattendon where she finished her schooling and spent the rest of her life.

In Yattendon she was employed as a companion for Miss Florence Waterhouse at Barn Close. Here her musical talents flourished, she learned to play the violin and the cello. Miss Waterhouse had a choir of several village residents and each year they went to Newbury Corn Exchange for the music festival. It was a day trip, rehearsal late morning and afternoon, and then the highlight was tea in Newbury and back to the Corn Exchange for the performance. Gertie also sang in Yattendon church choir, Miss Flo being the organist. As a young girl I was taken to church by Gertie and sat in the choir – quite daunting for me. However, I have always enjoyed church music and still sing in the church choir at Woolton Hill. In my teens I was taken to the Corn Exchange by Gertie to listen to Newbury Choral Society singing the Messiah. Taking my seat I was handed the score and Gertie tapped the words and music for me to follow.

Gertie played tennis for Yattendon and I am told that if Gertie was across the net from you 'watch out' for her return of the ball.

She was also a founder member of the '67 Drama Group in the village playing many leading parts. A member of the WI and secretary for many years, she also typed the stencils for the village magazine the Broadsheet onto the old fashioned stencils – and never a mistake.

She taught Country Dancing – and yes I was taken to that as well. I can still recall the dances, and hearing 'Bertha, you did that wrong, now we must start again'. It was not always my fault, I might add. Strip the Willow and Brighton Camp were her favourites.

After Miss Flo died in 1954 Gertie went to work at the School of Military Survey as a typist where she met Ernie. They married in 1960 and continued to live in Yattendon. Ernie died in 1983 and she remained living next door to her cousin, Ruth my Mother, until she went into hospital after a 'funny turn'. From there she went to a flat at Leslie Southern Court in Newbury, eventually going to Herbert Potter House, and for the last 12 and a half years she had been at Enbridge House Care Home in Woolton Hill where she passed away peacefully.

Bertha Bates

07973 539666 | simon@gardenhousefurniture.com



Beautifully Crafted Outdoor Furniture  
www.gardenhousefurniture.com

### VG Furnishings. *The Curtain Specialists.*



01635 867804 • www.curtainspecialists.co.uk

### Home and Property Maintenance and Repairs

- Local professional family run business
- Internal and External decorating
- Kitchen and Bathroom fitting and tiling
- General building maintenance & repairs
- Fencing, decking and patios
- No job too small



*Because everyone's home is their castle*

www.highclerehandyman.co.uk

Call for free quotation on 07812 135045  
or email: highclerehandyman@gmail.com

**OAKWAY**  
Tree Surgery & Landscaping

@oakwaytreesurgery



TREE SURGERY | FENCING | STUMP GRINDING | HEDGE CUTTING | Paddock Maintenance

07979 490697 | info@oakwaytreesurgery.co.uk | oakwaytreesurgery.co.uk

### Adi House Plumbing and Heating

Local Domestic Plumbing and Heating Engineer  
Over 30 years experience  
Fully insured

All types of plumbing works including:  
Bathroom installations  
Water softeners  
Heating power flushing  
Pipework alterations and installations

07836666092  
Adrianhouse1@gmail.com



### Chilton House Mitchells

Interior Design, Home Renovations & Project Management

Whether you are looking for a full interior design service, or just some inspiration, I'd love to hear from you. Offering a selection of design options, ranging from initial consultation and design boards, through to full design and on-site management of your project.

Interior Design • Space Planning • Inspiration Boards



Jo Mitchell  
Tel: 0777 579 1344  
Email: jo@chiltonhousemitchells.com  
www.chiltonhousemitchells.com/services





Proud winners of the  
Top 20 nurseries in the  
South East England  
award 2020



A welcoming and flexible nursery for children aged 3 months - 5 years

Henwick Court, Turnpike Road, Thatcham, Berkshire, RG18 3QY  
01635 528857 | [www.tigersdaynurseries.co.uk](http://www.tigersdaynurseries.co.uk)

### Woolton Hill Post Office and Stores

Post office, Newsagent, National Lottery  
Off-Licence & General Stores

Post Office Open:

Monday to Friday 9am-5.30pm

Saturday 9am-12.30pm

We also hold Euros and Dollars



We also deliver newspapers in  
surrounding 4 miles.  
Woolton Hill Post Office & Stores  
Broadlayings  
Woolton Hill RG20 9TR  
**01635 253463**



## Bright Sparks Nursery School



East Woodhay Village Hall, Heath End, Newbury (only 4 miles)

We have an **Outstanding** OFSTED report

We have fully qualified teachers including specialists for  
French, Music, Dance, Football, Fitness and Forest School

Places are offered to children aged 2 - 5 years

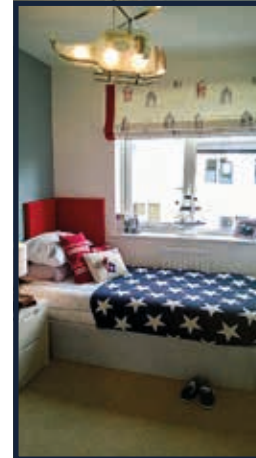
Head Teacher: Mrs Cherida Daniel B.A. Hons, Mont. Dip. EYPS

[www.brightsparksnursery.co.uk](http://www.brightsparksnursery.co.uk) Telephone: 01747 870432 or 07768123139



Thousands of different hardy trees, shrubs, herbaceous perennials, roses,  
conifers, fruit, climbers, ferns and grasses are always available.  
A family run business. Most of our stock is produced on site and we are  
happy to help you find just what you are looking for.

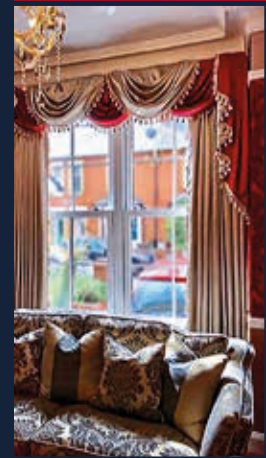
[enquiries@penwoodnurseries.co.uk](mailto:enquiries@penwoodnurseries.co.uk) [www.penwoodnurseries.co.uk](http://www.penwoodnurseries.co.uk)  
The Drove, Penwood, Newbury RG20 9EW  
01635 254366



### Sharon Stretton Designs Bespoke Soft Furnishings & Interior Design

- Curtains & Blinds
- Tracks & Poles
- Upholstery
- Mood Boards
- Fabrics & Trimmings
- Cushions & Headboards
- Bed Valances & Throws
- Fitting Service

Showroom:  
Unit 5 New Mills Industrial Estate,  
Post Office Road, Inkpen, Hungerford,  
Berkshire, RG17 9PU  
Tel: 01488 669267



## Andy Jones Window Cleaning 07876 028905

Window Cleaning - Gutter Clearance - Fascia & Soffit Cleaning  
Conservatories - Solar Panels

Call or text for a no obligation quotation on 07876 028905

[contact@andyjoneswindowcleaning.co.uk](mailto:contact@andyjoneswindowcleaning.co.uk)

[www.andyjoneswindowcleaning.co.uk](http://www.andyjoneswindowcleaning.co.uk)



## C & E GROUNDWORKS LTD

Experienced Groundworks & Construction Company In Newbury & Surrounding Areas



- Buildings • Foundations
- Paving & patio services
- Specialists in resin bond
- Turf & Astro turf • Concreting
- Fencing • Landscaping

feel free to contact us today for  
a FREE QUOTATION

Based in Newbury C & E GROUNDWORKS LTD are a well known company that have a superb reputation for providing a range of groundworks from drainage to driveways.

ceggroundworks@hotmail.co.uk 07500986386 01635 34601 www.cegroundworks.co.uk

## East Woodhay Local History Society



This month's meeting will take place on Monday 18 October at 8pm in the Village Hall at Heath End. The speaker will be one of our members, Mike Robinson, with the topic being 'The History of Farming'.

Mike is an authority on the development of agriculture and this talk will be a sequel to his previous fascinating talk about agriculture in general. This time he will focus on the local area, its estates and tenant farms.

New members welcome—£7.50 annual membership. Visitors also welcome—£4.

Chris Dalton.



## 1-1 Drum Lessons

All ages & skill levels welcome  
Discounts for block bookings  
First 30 minute assessment free  
Newbury studio

www.samslatermusic.co.uk/book-a-lesson tel 07428172160 sam@samslatermusic.co.uk

## HW CLEANING SERVICES

Please call: 0791 7702257

- Mobile professional detailing and valeting for all vehicles
- Pressure wash treatments for driveways and patios
- Carpet and upholstery cleaning
- Domestic / Commercial / End of tenancy cleans
- Anti-viral and bacterial deep sanitization fog treatments - domestic and commercial

www.hwcleaningservices.com

## M.W. SUTTON

Roofing Specialists  
3 Byeways, Highclere

*Family business established 1972*

Contact Jason Sutton  
for free quotations:

Mobile 07770 626230  
Home 01635 253951  
suttonroofing@yahoo.co.uk

Fully insured to carry out  
all your roofing needs



**Aardvark**  
PROFESSIONAL OVEN AND  
CARPET CLEANING SERVICES

AARDVARKOVENCLEANING.COM  
AARDVARKCARPET-CLEANING.COM  
07783 810806

## Personal Computers

new - repairs - upgrades - data recovery - no job too small

phone John on 01635 254102



Fully qualified and insured

Professional, friendly and reliable with attention to detail coupled with great value pricing

- Tree felling
- Tree reduction
- Climbing & aerial work
- Stump removal
- Hedge reduction
- Site clearance

Contact **Nigel Smith** on 07803 034716

Email: [nigel@highcleretreeworks.co.uk](mailto:nigel@highcleretreeworks.co.uk)

Visit us at [www.highcleretreeworks.co.uk](http://www.highcleretreeworks.co.uk)

We take on small and large jobs and will happily discuss any individual requirements with you

Emergency work undertaken

## Highclere Garden Machinery

- \*Service and Repair
- \*Restoration\*
- \*Blade Sharpening \* Welding and General Engineering\*
- \*We buy and sell second-hand garden machinery\*
- \*Mowers\* Strimmer's\*Chainsaws\*Blowers\*
- \*Generators\*Hedge Cutters\* etc

Read our customer reviews on:

@highcleregardenmachinery

tel: 07970 821278 [highcleregardenmachinery@outlook.com](mailto:highcleregardenmachinery@outlook.com)



## Pure Clean Window Cleaning

also frames, canopies, cladding, conservatories, guttering & soffits



Call Claire or Martin on 01635 523917 or 07958 207451  
email [kimble@techie.com](mailto:kimble@techie.com)



The Golf Range @ Newbury Racecourse

*"Amazing Golf Lessons" with PGA Professional Tim Butler*

Lesson Vouchers can also be emailed as last minute gifts

"Tim will make you a better golfer, highly recommended"



Call Tim on 07810 523040 or email [timbutlergolf@gmail.com](mailto:timbutlergolf@gmail.com)  
[www.timbutlergolf.co.uk](http://www.timbutlergolf.co.uk)

## Wonders with Wood

### Hardy's Custom-Made Carpentry & Joinery

Chris Hardy  
Bruan Road  
Newbury

07872124367  
[chris.hardy72@gmail.com](mailto:chris.hardy72@gmail.com)



Local professional service tailor made to meet your requirements and budget

*Purchase Ledger Processing*

*Bank Reconciliations*

*Monthly Management Reports*

*Invoicing and Credit Control*

*VAT Returns*

*Payroll Bureau*

Tel: 07970 297940 Email: [info@clerebookkeeping.co.uk](mailto:info@clerebookkeeping.co.uk)

[www.clerebookkeeping.co.uk](http://www.clerebookkeeping.co.uk)

The Beeches, 2 Greenways, Woolton Hill, Newbury, Berkshire RG20 9TD



## Redlands Property Services Ltd

Specialist in All Aspects of Oil Fired Heating and Plumbing

New Boiler Installations, Servicing, Breakdowns, Oil Tank Replacements  
Underfloor Heating, Mains Pressure Hot Water Cylinders Installations



All Work Guaranteed/Free Quotes

Please call : James Mead

OFTEC Registered Company C8170

Tel 01189 810 310 / 01635 282 172 Mob 07795 063 067  
www.rpsllp.co.uk email boilersupport@rpsllp.co.uk

## LOGS, COAL, AND KINDLING

ring Richard 07990 585527

**Mown & Grown**  
Landscaping ~ Tree Surgery ~ Garden Maintenance

- Hedge cutting
- Tree work
- Grass cutting
- Garden maintenance
- Fencing
- Fully insured

for a free quotation call 01635 745 060

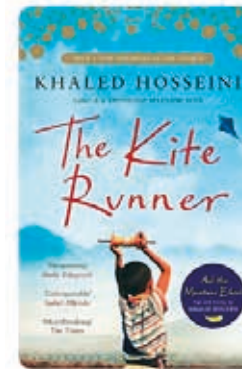
MownAndGrownNewbury@Gmail.Com ~ Visit our wesite: MownAndGrown.Net

## National Women's Register



In spite of the relaxation of Covid restrictions, the last two events of our 2020-21 programme were held out of doors. The first, a light-hearted treasure trail around the village, culminated in a get-together with light refreshments in a member's garden. To round off the season we held a Summer Garden Party on a glorious evening and enjoyed delicious supper, a garden-themed quiz and some garden games to test our skills.

In September we were delighted to resume face to face meetings. Our first session of the new term is usually a book review where we



are sent a Big Read List from the NWR head office to choose from. This year the selection reflected the 6 decades of NWR with a best seller chosen from each decade.

Out of that list came: *The Kite Runner* by

Khaled Hosseini which proved to be very topical describing 2 boys growing up in Afghanistan and how their friendship affects the rest of their lives.

*Poisonwood Bible* by Barbara Kingsolver had a mixed reception from those who had read it. It is

a story told by the wife and four daughters of Nathan Price, a fierce, evangelical Baptist who takes his family and mission to the Belgian Congo in 1959 and how their lives are shaped by the experience while *Actress* by Anne Enright was a good example of how being nominated for a national book prize was no guarantee of being a good read for everyone. This novel paints a vivid portrait of actress Katherine O'Dell, lovingly drawn by her daughter Norah. As Norah recalls her mother's life and researches the past, we gradually learn the harsh truths concealed by her mother's romanticizing of her life's events.

*You People* by Nikita Lalwani is the story of a London pizzeria that is largely staffed by undocumented migrants and presided over by the charming and enigmatic Tuli. It raises fundamental questions about what it means to be kind in an unkind world.

*Hamnet* by Maggie O'Farrell is a novel based on the story of Shakespeare's son. It is an absorbing tale of the bond between twins and of a marriage pushed to the brink by grief, with fascinating side plots.

**Do you think our activities sound interesting and fun? Ever considered joining us? How about coming along for a taster session? You'd be very welcome to attend one of our meetings to find out more. Just call Val on 255168.**

# EAST WOODHAY FLOWER AND PRODUCE 70<sup>th</sup> ANNIVERSARY SHOW

Saturday 21<sup>st</sup> August

After an enforced break in 2020, the Show bounced back to celebrate its 70<sup>th</sup> anniversary, with 46 entrants keen to compete again. The Show was opened by Basingstoke and Deane Borough Councillor Graham Falconer, and a celebratory cake was made by Louise Embling of Plain 'n' Fancy cakes.

Ninety-five year old Les Barber continued his success at the Show by winning 5 cups; achieving the highest points in both the Vegetables & Flower classes; best roses; best vase of flowers; and the Floral Cup, awarded for the most points in the floral art section, which included a class for an arrangement entitled 'Over the Rainbow', and also one with the theme 'Winter'. Other cups were awarded as follows:

Most points in the Dahlia section—Les Wallace

Best Begonia—Bill Webb

Best Runner Beans in show—Cathy Neller

Best Carrots in show—Norman Powers

Winners of the Children's classes were:

13-16yrs—Emily McGraghan

9-12yrs—Jack McGraghan

Under 5yrs—Fred Pocock

A good crowd attended the Show and enjoyed looking at the exhibits, perusing the stalls, being entertained by the East Woodhay Silver Band, and watching local artist Helen Mortimer giving a demonstration on how to paint on silk, with the opportunity of then 'having a go'.

Grateful thanks from the committee to all our sponsors, volunteers and loyal supporters.

The Hayes Challenge Cup – Les Barber

The Arthur Curnick Cup – Les Barber

The Coronation Cup – Les Wallace

The John Partridge Memorial Cup – Charlie Sheppard. Runner up – Mike Robinson

The Ladies Challenge Cup – Jean Partridge

The Sampson Cup – June Powell

The Carden Challenge Cup (13-16 yrs) – Emily McGraghan

The Cecil Tate Memorial Cup (9-12 yrs) – Jack McGraghan

The Barber Cup (5-8 yrs) – No Entries

The Chairman's Cup (under 5 yrs) – Fred Pocock

The Canon Stephenson Cup (Best roses) – Les Barber

The Ellen Webb Challenge Cup – Les Barber

The George Tilling Memorial Cup (Best dahlias) – Les Wallace

The Floral Cup – Les Barber

The Frederick Marsh Cup (Best Amateur photograph) – Diana Brindley

The Bill James Cup (Best begonias) – Bill Webb

The Tom Trice Memorial Cup (Best carrots) – Norman Powers

The Walt Hills Memorial Cup (Best runner beans) – Cathy Neller

The Mrs. R. Thomas Cup – Eileen Mason

The Jane Wells Cup –



Dear Friends,

I, and Canon Marvin, are very blessed to share in ministry in our parishes with several wonderful Licensed Lay Ministers (LLM), traditionally called Lay Readers. After a period of training, at their licensing service the Bishop reminds new LLMs that they are:

*'called to serve the Church of God and to work together with clergy and other ministers. They are to lead public worship, to preach and teach the word of God, to assist at the eucharist and to share in pastoral and evangelistic work. They are to encourage the ministries of God's people, as the Spirit distributes gifts among us all. They are called to help the whole Church to participate in God's mission to the world.'*

Locally it is time for us to thank Mary Herbert, who has retired after 20 years from her role as an LLM (she is not retiring from the church, she will still be very much involved I am glad to say!). Mary moved to our parishes some 11 years ago from Pembrokeshire, where she already served as an LLM, as she had before that in Staffordshire. Mary brought us a different voice of experience shaped in other Dioceses and parishes which has enriched our ministry. Besides her faithful participation in leading services and preaching, some of you will know Mary from her support and contribution to school worship and her active involvement with Messy Church and children's ministry. She has also led study groups and been pro-active in facilitating the 'Pins and Needles' group (knitting and sewing for charities). This is really only the tip of the iceberg of all that Mary has contributed to our church life as an LLM. In the last Parish Communion service of September, as her current licence came to an end, Mary put down her Reader's blue preaching scarf for the last time to take up instead, in her own words, her 'place in the pew'. As one ministry comes to an end new opportunities begin and, I know, that Mary will soon be pursuing some new ideas from the pew...

Thank you so much, Mary, for all you have given us and for your continuing fellowship among us. Your example and vocation have been a wonderful inspiration and encouragement to our shared faith and service.

With every blessing,  
Canon Christine

From the Church Registers: August 2021		
Baptism: we ask God's blessing on the life of...		
1st August	Lilian Louise Taylor	Highclere
8th August	Harriet Ren Booth	East Woodhay
15th August	Jasper Jonathan Dean	Woolton Hill
22nd August	Elio Jack Alway	Highclere
29th August	Florence Hazel Ryan	Woolton Hill

NORTH WEST HAMPSHIRE BENEFICE			
Ashmansworth + Crux Easton + East Woodhay + Highclere + Woolton Hill			
...making Christ known in our communities			
Church Services OCTOBER 2021			
Welcome! Service details are correct at time of publishing, any necessary changes will be posted on church noticeboards.			
<b>SUN 3<sup>rd</sup></b> <i>Harvest</i> <i>(Trinity 18)</i>	Harvest Festival Harvest Festival Harvest Communion Evensong <i>(Trinity 18)</i>	Woolton Hill Highclere East Woodhay Ashmansworth	9.30am 11.00am 11.00am 11.00am
<b>SUN 10<sup>th</sup></b> <i>Trinity 19</i>	Holy Communion Parish Communion Matins Harvest Festival	East Woodhay Woolton Hill Highclere Ashmansworth	8.00am 9.30am 11.00am 11.00am
<b>SUN 17<sup>th</sup></b> <i>Trinity 20</i>	Morning Worship Matins Parish Communion Harvest Evensong	Woolton Hill East Woodhay Highclere Crux Easton	9.30am 9.30am 11.00am <u>5.00pm</u>
<b>SUN 24<sup>th</sup></b> <i>Bible Sunday</i>	Holy Communion Parish Communion Messy Church Holy Communion <i>Baptism</i> Evensong	Highclere Woolton Hill Ashmansworth Crux Easton <i>Woolton Hill</i> East Woodhay	8.00am 9.30am 9.30am 11.00am <i>12noon</i> 6.00pm
<b>SUN 31<sup>st</sup></b> <i>All Saints</i>	Parish Communion <b>Baptism</b>	Highclere <i>Woolton Hill</i>	10.00am <i>12noon</i>
WED 6 <sup>th</sup> , 13 <sup>th</sup> , 20 <sup>th</sup> , 27 <sup>th</sup> Oct, 3 <sup>rd</sup> Nov Holy Communion Woolton Hill 10.00 am			
<b>Rector: Revd Canon Christine Dale</b> <i>(Rest day: Friday)</i> 253323 <b>Associate Priest:</b> Revd Canon Marvin Bamforth 254718 <b>Readers:</b> Horace Mitchell 254677, Mike Sarson 07913 943504 <b>Reader Emeritus:</b> Rosemary Cahill 253306 <b>Lay preacher:</b> Angela Myers 254559			

From the Church Registers: August 2021 Continued		
14th August	<b>Wedding: may God bless their lives together</b> Harry Herbert & Clodagh McKenna	Highclere
19th August	<b>Funeral: may she rest in peace</b> Gertrude Annie Kingston	Woolton Hill West Berks Crem
21st August	<b>Burial of ashes: may they rest in peace</b> Harry Pearce	Woolton Hill
24th August	Percy Alfred & Helen (Nellie) Hayes	Woolton Hill

I approached the August coffee morning with some trepidation, as we only had twelve members at our last meeting. This is our major money raiser – but I need not have worried.


A beautiful day and a beautiful garden (thank-you Pat) ensured a lovely setting.

The committee had worked hard and we had about forty generous visitors (Thank you to the stall holders). Everyone seemed very happy and we took the opportunity to tell people about our October meeting (Oct 12<sup>th</sup> at 14:30pm) when we hope to be back in the hall!

The talk is about knitting through the ages – with an emphasis on military use. This entertaining lady has worked in film & television industries besides giving many talks.

Hope to see you there!  
June Milsom



 **YEW TREE** Garden Centre  
Ball Hill, Newbury RG20 0NG  
www.yewtreegc.co.uk  
01635 255250

## the garden carpenter

decks, fences, gates and sheds  
uncompromising quality

for a free estimate contact Duncan Graham  
www.thegardencarpenter.com 01635 552301



### Did you know that there is a Cub Scout Pack in your area?

Cub Scouts are young people of 8 – 10½ years old and they meet each week, with their Leaders at East Woodhay Village Hall.

They have fun learning new skills, making friends, playing games and earn lots of Badges to wear on their uniform.

Over the past difficult year, the Cubs and their Leaders have kept going—with some rather different Zoom meetings. As well as some fun and games, they learnt some mapping skills which helped them to find the whereabouts of some Hidden Treasure which they were able to eat!

Over the Summer Term the Cubs were able to get back together and have been very busy catching up on some Badges. They have been hiking using those map reading skills, did some science experiments, learnt how to keep fit and healthy, took part in activities involving food and eating and played loads of games with lots of Teamwork!

It will soon be time to start a new term in September.

1<sup>st</sup> WOOLTON HILL BEAVER COLONY

Beaver Scouts are the younger section for 6 – 8 year-olds, and they do similar activities to the Cub Scouts but focussed for their age group.

Unfortunately, our Beaver Colony had been suspended as our previous Leaders were unable to continue.

GOOD NEWS -We now have a volunteer who is prepared to be our Beaver Leader.

**HELP NEEDED**—Before we can re-open we need at least one more regular Assistant to help plan, prepare and attend the weekly meetings.

Helping the young people to achieve their awards can be very rewarding and great fun for the Leaders too.

If you think you can help, and want to know more of what is involved please contact: [mo.osborne@btinternet.com](mailto:mo.osborne@btinternet.com)

MO

St Thomas' Church, Woolton Hill

**Community Cafe every Friday morning at St Thomas' Church**

*Please join us for coffee, tea, biscuits and chat*

*Drop in between 10am and 11.30am We look forward to seeing you*

**Everyone is welcome!**

Please note that unfortunately there will be no Café on 1<sup>st</sup> October due to the Church being used for a service that morning



# Thyme

The food you would have cooked

- ❖ Can I help you fill your fridge or freezer?
- ❖ Freshly made, nutritious food for busy people.
- ❖ Menu of main dishes and puddings to suit an informal supper with family or friends.
- ❖ Menus also available for dinner parties, family or special celebrations.
- ❖ All dishes made to order and delivered locally.

**Rhona Everard**

Mob: 077969 46664

Email: [thymehomecook@gmail.com](mailto:thymehomecook@gmail.com)

Web: [www.facebook.com/thymehomecook](http://www.facebook.com/thymehomecook)

## AREA SWEEP

### CHIMNEY SWEEP

A PROFESSIONAL CHIMNEY SWEEP SERVICE  
CLEAN RELIABLE BRUSH AND VACUUM  
FULLY INSURED MANY YEARS EXPERIENCE

AGA'S

RAYBURNS

JETMASTERS

ALL OPEN FIRES

WOODBURNERS

NEST REMOVALS

OIL FIRED BOILERS

SWEEPING CERTIFICATES ISSUED

CAPS AND COWLS SUPPLIED AND FITTED



CALL DARREN

01635 569195/07900398678

[areasweep@btinternet.com](mailto:areasweep@btinternet.com)



Building & Construction

- Loft Conversions
- Extensions
- Kitchens
- Bathrooms
- Refurbishments
- Patios
- Double glazing

Small selection of building work we undertake

For all your building projects and free estimate

Call Jeremy

01635 278 485

07885 985 275

[www.watermill-sounds.co.uk](http://www.watermill-sounds.co.uk)

## ATH PLUMBING & HEATING

OFTEC Registered

- New boiler & system installations
- Mains pressure hot water cylinder -service & installation-
- Maintenance
- Insured, references available, free estimates
- Bathroom installation

*Please call Nigel Brown:*

01635 254787 07979718427

[athplumbingheating@gmail.com](mailto:athplumbingheating@gmail.com)

## LOCK & McDERMOTT LTD

Painters and Decorators

Qualified with over 30 years' experience working in the private sector  
TRADING STANDARDS APPROVED TRADER  
CRB CHECKED

telephone: 01264 351094 and 01264 363267

email: [lynda861@btinternet.com](mailto:lynda861@btinternet.com)

or [j.lock094@btinternet.com](mailto:j.lock094@btinternet.com)

## R. D. RUTTERFORD

### OIL FIRED BOILER MAINTENANCE

MEADOW VIEW  
BROAD LAYINGS  
WOOLTON HILL  
NEWBURY  
BERKSHIRE RG20 9TS

01635 253257

Mobile: 07771 610145



## Barking Boutique

Professional Dog Grooming

Patient and Caring Service for  
all Breeds

Clipping, Hand Stripping,  
Scissoring, De-matting,  
Bathing, Nail & Ear Care



**Alison Sutton 07706695773**  
[barkingboutique@yahoo.co.uk](mailto:barkingboutique@yahoo.co.uk)

Windfield House, Byeways, Highclere,  
Newbury, Berkshire RG20 9PA

## TT Garden Care

Private & Commercial Maintenance

Hedge Cutting - Lawn Care - Fencing - Small Tree Work

Turfing - Weed Control (NPTC Qualified)

Free estimates on request

Trevor Thomas

T : 07949 995658

01635 865604

E : [tt4gardencare@btinternet.com](mailto:tt4gardencare@btinternet.com)

# St Martin's CE Primary School



What is happening in the Autumn Term at St Martin's

After the long summer holidays, we are thrilled to have all children back at school. This term is always a busy one, with lots of settling in and exciting activities for all of the children at school.

The children have all come back into school eager to learn and are embracing the opportunity to return to 'normal' learning. We are still following the Government guidelines to try to keep everyone as safe as possible, but there are more opportunities for us to come together as a school, both at playtimes and for worship—the first whole school worship since March 2020 was quite an emotional one for all involved!

We have welcomed a new Year R class who are all settling in well and thoroughly enjoying the experiences on offer. Their learning this half-term is all linked to bears and rhymes, with opportunities to go on a bear hunt, take part in a teddy bear's picnic and find lost bears in our nature area! During October, we are hoping to totally transform their outdoor learning space with a brand-new, purpose-built area. This new area will include space for imaginative play, creative learning, physical development and will be a fantastic addition to our school. We can't wait to have it finished.

Lower school have a busy term ahead with lots

of activities related to their topic of Wings, Wheels and Water, whereas Upper School's learning is all linked to Mythical Creatures.

Although we are only a few weeks into term, lots has already happened; Year 6 have taken part in bikeability, (a scheme designed to promote cycle safety); we have organised our regularly collection for the West Berks Food bank; all children in Year 2, 3 and 4 have been trained to use our WoW (Walk on Weekdays) scheme to help minimise traffic at the school gate during drop off by providing a drop and walk option from the triangle (this has not been operational during the coronavirus pandemic); and we have collected items from the village for our charity collection points.

We also have lots to look forward to this term. The whole school is excited to be able to plan our traditional whole school events again and are looking forward to our Harvest Festival, our St Martin's Day service and our Christmas Service; the Lower School children are looking



# St Martin's CE Primary School



forward to their nativity play; the choir are busy practising to perform at the Winchester Christmas market and Year 5 and 6 are already counting down the days until they go on residential at the end of October and have the opportunity to experience a range of adventurous activities including den building, bridge building, canoeing, abseiling and lots, lots more.

Finally, pupil voice is really important at St Martin's and we have started the new academic year with lots of children applying to take on roles as ambassadors, house captains or to become members of our School Council, Stewards of God's Earth group or Worship team – it is wonderful to see the children so passionate about their school and wanting to take an active role in making a difference, to the school, the local community and further afield. We can't wait to see everything they achieve this year!

For more information on St Martin's School, please visit our website:  
[www.st-martins.hants.sch.uk](http://www.st-martins.hants.sch.uk)

Or email the school at [adminoffice@st-martins.hants.sch.uk](mailto:adminoffice@st-martins.hants.sch.uk)



Highclere Osteopathy

**Sara Winchcombe Registered Osteopath**

Neck, back, any joint pain and sports injuries

**07748 185 713**

[sara@highclereosteopathy.co.uk](mailto:sara@highclereosteopathy.co.uk)

[www.highclereosteopathy.co.uk](http://www.highclereosteopathy.co.uk)

*Handy4Jobs*

- Painting Decorating & Tiling
- Kitchen & Bathroom Fitting
- All aspects of Gardening & Fencing
- Window Cleaning, Facias & Guttering



General DIY & Gardening ~ Wayne Murkett, Handyman

07796813580 ~ 01635 31016 ~ 07796950639



## TUITION IN FRENCH AND GERMAN

Would you like to brush up your language skills? Would you like to learn a new language from scratch? Does your child need that extra edge at GCSE or A level?

I offer one to one tuition in the relaxed surroundings of my own home with flexible tutoring focusing entirely on your needs. I am a former Head of Department and examiner for The University of Cambridge Examination Board.

Recommendations available.

Contact Carolyn Wood on 01635-254140 or 07799 586263.

The Friendly [www.friendlyoilservice.com](http://www.friendlyoilservice.com)

# Oil Boiler Service Ltd

Fully qualified and insured  
oil boiler service & repair specialists

Simon, Nick & Paul

**01635 282992**



### Woolton Hill Preschool

[www.wooltonhillpreschool.org.uk](http://www.wooltonhillpreschool.org.uk)

The Church Hall, Woolton Hill, Newbury

30 years of experience, Achieved 'Good' in 2016 Ofsted report

Secure, fun & caring environment

Friendly, loyal & Qualified staff

Strong curriculum based learning through play

French, Debutots & Talking tots at no extra cost!

Places for ages 2-5, government grant available

Breakfast club available for all children up to age 8

The staff walk the children to the Junior and Infants school

Flexible term-time hours. Mon-Thurs 8am-3pm Fri 8am- 12.30pm

Contact on: 01635 254721 Or email at: [hello@wooltonhillpreschool.org.uk](mailto:hello@wooltonhillpreschool.org.uk)



## Neighbourhood Policing Team

Hello Everyone

I would like to introduce myself. I am PCSO Josh Revett and I will be your new PCSO, taking over from PCSO Ireland. I will cover the rural area West of Basingstoke which includes, Kingsclere, Highclere, Burghclere, East Woodhay, and St Mary Bourne just to name a few.

I qualified as an independent patrol officer in July 2021. As I was being tutored in Basingstoke Town centre I am still getting used to life as a rural officer. Being a PCSO is very different to my previous job as a baker but I absolutely love it!

I am very much looking forward to meeting the community and taking part in parish council meetings, additionally it will be great to take part in any activities that may be happening in East Woodhay.

Remember I am a friendly face and if you see me in the area, do not be afraid to stop me and say hello.



Kind Regards,

PCSO Joshua Revett 18145

Tadley Neighbourhood Policing Team

Tadley Police Station–Mulfords Hill, Tadley RG26 3HZ

[joshua.revett@hampshire.police.uk](mailto:joshua.revett@hampshire.police.uk)

## Learn to Draw & Paint Daytime Adult Classes

- 10 week art courses - held throughout the year
- Designed for absolute beginners to intermediates
- Warm and welcoming environment
- Pencil, Watercolour and Acrylic (as well as other mediums) every course
- Morning or Afternoon sessions available
- Held at St Marys Church, Shaw



Get in touch for more details or to book your space, or visit our website [www.creativeartclasses.co.uk](http://www.creativeartclasses.co.uk) or email [studio@creativeartclasses.co.uk](mailto:studio@creativeartclasses.co.uk) or call Carrie 07780 714656





**Chartered financial advice & Wealth Management services**  
[www.essential-wealth.co.uk](http://www.essential-wealth.co.uk)  
 Telephone: 01488 669840  
[enquiries@essential-wealth.co.uk](mailto:enquiries@essential-wealth.co.uk)



**G A BUTLER & SONS LTD**  
 Specialist Tree Surgeons

**01635 254 771**

- Tree Surgery
- Hedge Cutting
- Stump Grinding
- Seasoned Logs
- Wood Chippings
- Fencing





[www.lopit.co.uk](http://www.lopit.co.uk)

**SHAPE UP YOUR WEEK**  
 Burghclere Hall

**Monday Hone 'N' Tone**  
 Beginners / Interm.  
 6.45-7.30pm. (£6.00)

**Body Blast!**  
 Suits all levels  
 7.45-8.45pm. (£6.00)

**Tuesday Super Sweaty Step!**  
 Help achieve your fitness goal. 7.30-8.30pm. (£6.00)

**Thursday HITT!**  
 Torch calories with this energetic class 7.30-8.30pm. (£6.00)

Fully Qualified Instructor, Sally  
**01635 278680**



**OUR SURGERIES:**  
 Burlyns Surgery, Burlyns, East Woodhay, Newbury, Berkshire, RG20 0NU.  
 Foxhold House Surgery, Crookham Common, Thatcham, Berkshire, RG19 8EL



We can help you meet all your pet and equine healthcare needs, with professional and caring staff who can treat your animal at a time that suits you. Out vets offer an emergency service giving you 24 hour reassurance.  
*...we're here to listen*

**24 hour phonenumber: 01635 254544**      [www.coachhousevets.com](http://www.coachhousevets.com)

# East Woodhay Parish Council



The month of August is typically a quiet one for the Parish Council; not so this year. We have been very busy with the consultation phase of our Neighbourhood Plan, a document which is so important if we want to protect our rural Parish, and particularly relevant when thinking of the Watermill Bridge proposal at Wash Water (to which the Parish Council is against). As we move into Autumn, the NP group will be collating and responding to feedback, ahead of the submission to Basingstoke and Deane.

Our speed awareness project is up and running; 10 locations have been identified and the newly purchased Speed Indicator Device (SID) will be moved around the locations on a bi-weekly rota. The aim is to remind motorists of the legal requirement to stick to the speed limit and the data collected can be analysed and published.

Play areas: we are aware that there are patchy areas of playground surface in the Woolton Hill playground. These will be fixed as soon as a contractor can come out and repair them. Every 2 weeks, Basingstoke and Deane checks the play equipment in both Heath End and Woolton Hill.

In the recreation ground in Woolton Hill we will soon be in receipt of some brand new exercise equipment, and a boules court, funded by S106 monies received after the Meadowbrook development.

We are also looking to buy benches for around the Parish, have you got any ideas of ideal locations? Pictures would be helpful too. Just let our Clerk know.

For all updates on our projects, particularly the new exercise equipment being installed, please check out our website on [www.eastwoodhay-pc.gov.uk](http://www.eastwoodhay-pc.gov.uk).

**RJ Lampard & Company Ltd**  
*A family run business Est 1976*



- Specialist Drainage & Ditching Works
- Road Repairs and Road Construction
- Civil Engineering Works - Concreting etc
- Own fleet of plant and machinery
- Fully qualified and experienced operatives

For further information please call:-  
**01635 253137 / 07768 201370 or email: [rj@rjlampard.co.uk](mailto:rj@rjlampard.co.uk)**



**audrey robinson**  
garden design

Professional, experienced  
and reliable

Garden Design  
Border Design  
Border Maintenance

**01264 738580**  
**07920 425704**

[www.audreyrobinsongardendesign.co.uk](http://www.audreyrobinsongardendesign.co.uk)

Experienced, qualified

## TUTORS

English, Mathematics

Sciences, Languages

History, Computing

English as a foreign language

All ages, all levels

On-line lessons available

**telephone 01635 253942**  
**email: [susan.trinder@googlemail.com](mailto:susan.trinder@googlemail.com)**

# Woolton Hill & District Gardeners' Club



### A Recipe for Success

Some of you may be thinking that 'A Recipe for Success' is just an old journalistic ploy to turn a non-event into something spectacular, but I can assure you, this was not the case for our SUMMER GARDEN PARTY!! It really was spectacular!

The first ingredient required is a period of about 18 months without a single social function of any kind; the second, an opportunity for gardeners to share anecdotes about their horticultural successes and failures in the delightful surroundings of the churchyard at sundown. And finally, the offer of cheese and wine, which had been purchased and prepared with much excitement during the afternoon by an able team of garden club caterers – Mary, Genie and Ann.

For me, your roving reporter, a highlight of the evening was an opportunity to interrogate (my apologies, chat to), some of our members about their gardens during the summer, so here are a few of their achievements:

- \* Margaret just let the grass grow higher and higher and only cut a tiny narrow path through the red campion and poppies which had appeared, as if by magic.
- \* Bronwen was thrilled with her experiment of growing 'Sweet Million' cherry tomatoes in a trough, from seed, for the first time.
- \* Sonja's new purchase was a miniature buddleia 'Pink Cerise' which she placed in a pot in her gravel garden to attract butterflies.
- \* Betty and Barry's garden has a low fence and backs onto woodland. They have been delighted by the response of walkers to their planting scheme of dahlias, canterbury bells, double white daisies and runner beans; a veritable cottage garden of traditional plants!
- \* Molly has experienced the almost forgotten delights of a hedgehog visiting the garden during a rainstorm.
- \* Heather, Julie and John are all expert vegetable growers of runner beans, tomatoes, beetroot, parsnips and carrots and I am sure they will be looking forward to our talk later in the year on this very subject. I certainly am.

Lorna Rains

***louise benson*** mobile hairdresser

**01635 38041 ANY TIME**

*quality hairdressing with a personal service*



**WELLNESS PILATES**

**STUDIO**  
*Now Open!*

Book Online [www.wellness-pilates.co.uk](http://www.wellness-pilates.co.uk) Get the App [explore.mindbodyonline.com/mindbodyapp](https://www.mindbodyonline.com/mindbodyapp)

INFO@WELLNESS-PILATES.CO.UK  
07944646357  
WOOLTON HILL BUSINESS CENTRE  
TRADE STREET  
WOOLTON HILL  
RG20 9UJ



## A D CARPENTRY & BUILDING

- Joinery
- Built-in storage
- Doors and windows
- First and second fix
- Rotten wood
- Refurbishments

Free estimates, competitive prices -  
call Andrew **07979 455903**

**smarthire**  
— vehicle rental —

**01635 552200**

SmarthireVehicleRental.co.uk

Third Street, Greenham Business Park,  
Newbury RG19 6HW

- CARS
- VANS
- MINIBUSES
- TRUCKS

## MARIO'S PLUMBING

**25 years' experience**

- gas/oil boiler servicing and replacements
- power flushing
- central heating and general plumbing

GAS-SAFE registered

Telephone Mario  
**07967123819**

## Arthur A Beaver Ltd

ESTABLISHED 1909

**Building Contractors  
Heating and Sanitary Engineers**



INSTALLATIONS  
REPAIRS  
MAINTENANCE  
SYSTEM UPDATES  
BOILER CHANGES  
QUALITY WORKMANSHIP  
& MATERIALS  
ALL ASSOCIATED  
BUILDING  
WORK UNDERTAKEN  
INCLUDING  
ELECTRICAL WORK

DOMESTIC & COMMERCIAL  
FREE ESTIMATES & COMPETITIVE PRICES

**Tel 01635 253240**



## the Alexander Technique

Relieve back & neck pain  
Enhance health & well-being  
Improve posture & stamina

for lessons and courses:

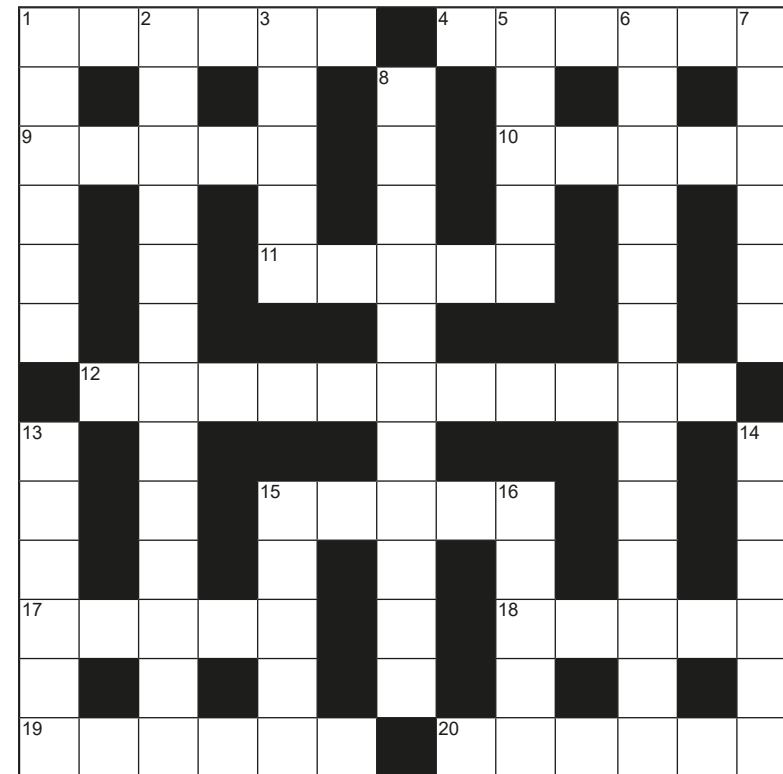
Judith Turner MSTAT

**01635 253981**

**07771 896696**

judeturner7@gmail.com

www.jt-alexandertechnique.co.uk



**224**

Answers crossword no 223  
Across: 1 Powder, 4 Bantam, 9 Tides, 10 Baker, 11 Diver, 12 Impulsively, 15 Abhor, 17 Miami, 18 Frill, 19 Darned, 20 Crusty  
Down: 1 Patrol, 2 Widcombe Fair, 3 Eased, 5 Amber, 6 Tokyo Olympics, 7 Market, 8 Harvest Home, 13 Harmed, 14 Barley, 15 Alice, 16 Refer

### Across

1. See how wonderful to exist and take in your arms (6)
4. Puzzle over how to saw with narrow blade (6)
9. Five go with Inland Revenue to sixth sign (5)
10. Note well where we live (5)
11. And note dangerous late arrival at river mouth (5)
12. Leaving little Robert in creche, Mother went to see what the tide had brought in (11)
15. Badger not right to show membership pin (5)
17. Enter curiously, and discover wooden antiques (5)
18. As Pat would say: Spaghetti! (5)
19. If Queen tagged along he would buy something, but if not it was just a habit (6)
20. Why bridle contained a combination of two elements (5)

### Down

1. Find six in bone and know it belongs to cattle (6)
2. To her, those fears are stuff and nonsense (13)
3. Local gym for David and Dolly? (5)
5. Find aid in this country (5)
6. Plaster cheese over cross country runner? (13)
7. Law backs bolt fastener with hard shelled fruit (6)
8. See girl cook egg in indulgent fashion (11)
13. Bookmaker's language confused strategy (6)
14. On ship and ready to travel, fellow backs on to winding road (6)
15. Ban little Joseph from playing this (5)
16. In some ways I think my pet lacks sincerity (5)

# Directory of Local Organizations

## 24hr Emergency Numbers

Thames Water . . . . . 0845 9200 888  
Southern Water (water supply) . . . . . 01273 606766  
Southern Electric . . . . . 105 or 08000727282

**Age Concern Hampshire Village Agent Sarah** . . . . . 07806 659449

**Arbor Flora Group** . . Secretary: Ros Oles . . . . . 01256 896014

**Basingstoke & Deane Borough Council** . . . . . 01256 844844

member: Graham Falconer ([cllr.graham.falconer@basingstoke.gov.uk](mailto:cllr.graham.falconer@basingstoke.gov.uk))253144

## Churches

East Woodhay, St Martin's . . . . . [www.stmartins.church](http://www.stmartins.church)

Churchwardens . . Richard Twallin 253354. . Andrew Colville . . . . 254017

W'lton Hill, St Thomas' [www.wooltonhill.com/community/church/church.html](http://www.wooltonhill.com/community/church/church.html)

Churchwardens. . . Chris Vane 253707 . . . . Bridget Wheeler . . . . 250729

## Defibrillators

There are 4 public access defibrillators in the Parish, WH Church Hall, EW Village Hall, the Rampant Cat, and WH Junior School.

**Doctors' Surgery Woolton Hill** . . . . . 253324

Patient Participation: . . . . . Rosemary Cahill. . . . . 253306

**Ducklings** . . . . . Fiona Morgan . . . . . 42080

**East Woodhay & Highclere Neighbourcare Volunteer Driving**

Enquiries/Volunteers-[www.ewhneighbourcare.org.uk](http://www.ewhneighbourcare.org.uk) Keith Nunn. . . 253888

**To collect your prescription or help collecting shopping call** . . 01635 745600

**East Woodhay Charities** . . . . . Secretary: Susan Wren. . . . . 254875

**East Woodhay Cricket Club** . . . . . Contact Adrian Batchelor .07810 647618

**East Woodhay Flower & Produce Show** . . . . . 254114

[www.eastwoodhayflowershow.co.uk](http://www.eastwoodhayflowershow.co.uk)

**East Woodhay Football Club** . . . . . Chairman: Alan Jones . . . . . 254024

**East Woodhay Local History Society** Sec: Christine Dalton . . 07880 628 114

**East Woodhay Parish Council Members:** . . . . . [www.eastwoodhay-pc.gov.uk](http://www.eastwoodhay-pc.gov.uk)

James Mitchell (Ch) [james.mitchell@eastwoodhay-pc.gov.uk](mailto:james.mitchell@eastwoodhay-pc.gov.uk) 01635 254747

Susan Cooper. . . [susan.cooper@eastwoodhay-pc.gov.uk](mailto:susan.cooper@eastwoodhay-pc.gov.uk) . . 01635 254149

Graham Dick . . . [graham.dick@eastwoodhay-pc.gov.uk](mailto:graham.dick@eastwoodhay-pc.gov.uk) . . 01635 255372

Martin Hainge. . . [martin.hainge@eastwoodhay-pc.gov.uk](mailto:martin.hainge@eastwoodhay-pc.gov.uk) . . 01635 255793

Paul Hurst (V.Ch) . [paul.hurst@eastwoodhay-pc.gov.uk](mailto:paul.hurst@eastwoodhay-pc.gov.uk) . . . 01635 254363

Phil Jarvis . . . . [philip.jarvis@eastwoodhay-pc.gov.uk](mailto:philip.jarvis@eastwoodhay-pc.gov.uk) . . . 01635 254422

Mark Rand. . . . . [mark.rand@eastwoodhay-pc.gov.uk](mailto:mark.rand@eastwoodhay-pc.gov.uk) . . . 01635 250898

# Directory of Local Organizations

## East Woodhay Parish Council continued

Karen Titcomb . . [karen.titcomb@eastwoodhay-pc.gov.uk](mailto:karen.titcomb@eastwoodhay-pc.gov.uk) . . 07974 011065

Andrew Watson . . [andrew.watson@eastwoodhay-pc.gov.uk](mailto:andrew.watson@eastwoodhay-pc.gov.uk)

Amy White (Clerk) [clerk@eastwoodhay-pc.gov.uk](mailto:clerk@eastwoodhay-pc.gov.uk) . . . . . 07855 275336

**East Woodhay Village Hall.** . . . . . Carol Stanley . . . . . 01635 35859

. . . . . [eastwoodvillhall@gmail.com](mailto:eastwoodvillhall@gmail.com)

**East Woodhay Short Mat Bowls Club** Contact: Cathy Neller. . . . . 255589

**East Woodhay Silver Band.** . . . . . Contact: Rosemary Gittins 07917 522180

**East Woodhay Society** . . . . . Chairman, Mark Rand . . . . . 250898

[eastwoodhaysociety@gmail.com](mailto:eastwoodhaysociety@gmail.com) [www.wooltonhill/ews](http://www.wooltonhill/ews)

**East Woodhay Twinning Association** Helen Allen, Secretary . . 01635 250776

**East Woodhay W.I.** . Secretary: Pat Gibbs . . . . . 07831 669 220

**Hampshire County Council** . . . . . Member: Tom Thacker . . 01962 771863

**Highclere Film Club** Secretary: Chris Martin . . . . . 253461

**Highclere Evergreens** . . . . . Leader: Mrs. V. Burge . . . . . 864584

**Litter warden** . . . . . [litterwarden@eastwoodhay-pc.gov.uk](mailto:litterwarden@eastwoodhay-pc.gov.uk)

**MP - Kit Malthouse.** . . . . . 01264 401401

[kit.malthouse.mp@parliament.uk](mailto:kit.malthouse.mp@parliament.uk). . . . . 2 Church Close, Andover, SP10 1DP

**National Women's Register** . . . . . Val Burfield . . . . . 255168

**Neighbourhood Watch**

Woolton Hill . . . . . vacant. . . . .

North End . . . . . Jack Castle. . . . . 253537

**Newbury Chamber Choir** . . . . . [info@newburychamberchoir.co.uk](mailto:info@newburychamberchoir.co.uk)

**Nwby. Wkly. News WH Correspondent.** . . . . . Nicole Bentham. . . . 255582

**Police** . . . . . Hampshire Constabulary (Position to be filled) . . . . 101

**The Samaritans.** . . . . . Freephone 116 123

## Schools

The Clere . . . . . 278372

The Clere Community Office . . . . . 278129

St Martin's East Woodhay CE Primary [www.st-martins.hants.sch.uk](http://www.st-martins.hants.sch.uk) 597796

**St Thomas', Woolton Hill, Infants.** . . [www.stthomasinfant.co.uk](http://www.stthomasinfant.co.uk) . . . 253431

**Woolton Hill Juniors** . . . . . [www.wooltonhilljunior.co.uk](http://www.wooltonhilljunior.co.uk) . . . 253364

**Spectrum** . . . . . [www.wooltonhill.com/Spectrum.html](http://www.wooltonhill.com/Spectrum.html)

Chairman . . . . . Bob King . . . . . 253378

Treasurer . . . . . Gill Burrows . . . . . 254301

# Directory of Local Organizations

## Spectrum continued

- Distribution . . . . Chris Vane . . . . . 253707  
 Advertising . . . . Michael Robinson . . . . . 253004  
 Editors:  
 Abbie Dando (Jan, Feb & Mar)  
 . . . . . [SpectrumEditorAbbie@gmail.com](mailto:SpectrumEditorAbbie@gmail.com) . . . . . 07477 987943  
 Mary Gulliver (Apr, May & June)  
 . . . . . [mary@TheGullivers.co.uk](mailto:mary@TheGullivers.co.uk) . . . . . 254567  
 Kathy Scott (6pm-9pm Oct, Nov & Dec)  
 . . . . . [spectrumwh@outlook.com](mailto:spectrumwh@outlook.com) . . . . . 254756  
 Jim Hannington (Jly, Aug & Sept)  
 . . . . . [seamusman3@gmail.com](mailto:seamusman3@gmail.com) . . . . . 07895637611
- St Martin's Guild** . . Secretary: Sarah Leventhorpe . . . . . 255293  
[info@eastwoodhayfete.org.uk](mailto:info@eastwoodhayfete.org.uk) [www.eastwoodhayfete.org.uk](http://www.eastwoodhayfete.org.uk)
- St Thomas' Handbell Ringers** . . . . .Nicole Bentham. . . . . 255582
- 1st Woolton Hill Beavers & Cubs** . . . Contact: . [mo.osborne@btinternet.com](mailto:mo.osborne@btinternet.com)
- Woolton Hill & District Gardeners' Club** . . . . . Nick Harcourt . . . . . 253546
- Woolton Hill Argyle Football Club.** . Jon Dennis . . [money.whafc@gmail.com](mailto:money.whafc@gmail.com)
- Woolton Hill Brownies** . . contact Maggie Russell - [2whbrownies@gmail.com](mailto:2whbrownies@gmail.com)
- Woolton Hill Church Hall.** . . . . . 253546  
 Nick Harcourt, Charnwood Cottage, Broadlayings  
[wooltonhillhallbookings@gmail.com](mailto:wooltonhillhallbookings@gmail.com) . . . . . 07971 064087
- Woolton Hill Pre-School** . . . . . Nicola Logan . . . . . 254721
- Woolton Hill Sports Club (tennis, table tennis)** Alison Whitehorn . . . 254391
- Woolton Hill Village Market** . . . . .Claire and Sally  
[www.whvm.co](http://www.whvm.co) [whvmarket@gmail.com](mailto:whvmarket@gmail.com)
- Woolton Hill Website.** . . . . .Contact: Mark Rand . . . . . 250898  
[www.WooltonHill.com](http://www.WooltonHill.com) [eastwoodhaysociety@gmail.com](mailto:eastwoodhaysociety@gmail.com)

## Spectrum Advert Rates

(with effect from April 2021)

Annual rates—please contact Michael Robinson Tel 253004

For ALL fund-raising events (charity, political, etc) £3 per quarter page b&w, £5 colour

For all commercial and professional advertisements £25 (colour) per quarter page

**Invoices are issued once the publication has been sent to print. Please note that advertisements may be altered in size to fit the space available.**

Guidance to advertisers: [www.wooltonhill.com/spectrum-guidance](http://www.wooltonhill.com/spectrum-guidance)

Subscription: £5 per annum



**CONTROL SERVICES**  
 Pest Management & Timber Care

Wasps • Hornets • Rats • Mice • Moles  
 Woodworm • Ants • Fleas • Flies • Moths  
 Bed Bugs • Beetles • Cockroaches

*Domestic and Commercial*

[www.pestcontrolberkshire.com](http://www.pestcontrolberkshire.com)  
 01635 250 852



## BALL HILL GARAGE

### Car Servicing & Repairs

Air Con Servicing & Repairs, Advanced Engine Diagnostics

Batteries, Exhausts, Welding, Tyres including Advanced Four Wheel Alignment

Hybrid & Electric Vehicles, Servicing & Repairs

Horsebox Trailer Service & Repairs

*Courtesy cars available, manual and automatic. Free local collection and delivery service.  
 Ball Hill Garage Technicians are fully qualified and regularly attend motor trade approved training courses*



MOT  
Cars &  
Light  
Vans

**Tel 01635 253282**  
[enquiries@ballhillgarage.co.uk](mailto:enquiries@ballhillgarage.co.uk)



approved  
garages.co.uk

## Liberty Garden Buildings



[www.libertygardenbuildings.com](http://www.libertygardenbuildings.com)

Yew Tree Garden Centre,  
 Ball Hill, Newbury RG20 ONG

**01635 255533**



**GREENHOUSES  
 HOME OFFICES  
 GARDEN ROOMS  
 ROTATING PODS  
 SUMMERHOUSES  
 GARDEN SHEDS**

# MARSH fuels



*Heating Oil now available to collect in 20 litre drums*

**01635 253 253**  
**[www.marshfuels.co.uk](http://www.marshfuels.co.uk)**

H C Marsh (Newbury) Ltd, Ball Hill, Newbury, Berkshire. RG20 0PW

## **Esseborne Manor Hotel & Restaurant**

Family run business offering a warm welcome and the best food in the area.

Daily lunches with canapes & wine

A la carte dinners

7-course tasting dinners

Sunday lunches

Vintage afternoon teas



**Perfect for private functions & weddings**

Hurstbourne Tarrant SP11 0ER,  
[www.esseborne-manor.co.uk](http://www.esseborne-manor.co.uk), 01264 736 444