

August 2021

50p

Spectrum



*Do you need your fence repaired or replaced?
Whether your job is large or small, we can help.*

Local, fully insured, specialist in domestic fencing and gates, shed supply and erection.

For a free quotation contact Kevin on 07765 443159 or email kevinjtooze@gmail.com
<https://www.facebook.com/TheFenceMaker>

City & Guilds NPTC

greentips

TREE SURGERY

YOUR LOCAL TREE CARE SPECIALIST

- Fully Qualified and Insured
- Tree Surgery
- Planting•Pruning•Removals
- Hedge Cutting
- Stump Grinding
- Woodland Management
- Chip, Mulch & Logs for Sale

T: 01635 254712
M: 07903 259973
www.greentipsuk.com

Editorial



With the assortment of weather we have been having it is hard to believe that August is almost upon us. Of course, certain parts of the garden have flourished, especially the lawns and the weeds, but plants such as geraniums in baskets have not done well, needing more sunshine and warmth to help them to produce flowers. I can't remember a previous July when the job of watering the pots and hanging baskets has been so easy! With many reluctant gardeners having been indoors glued to the tennis and the Euro 2020 football it has actually worked out quite well. This year I am attempting to grow some Scotch Bonnet and Thai Dragon chillies in pots but so far all I have is a thousand buds and very few flowers. We need some warmer weather so that I can put some home-grown 'heat' on my plate! Who knows, we may have summer weather in October and November this year?

I hope you all enjoy the August edition of Spectrum and I thank you for all the submissions of articles, photos and reports which fill the pages.
JH

<https://www.wooltonhill.com/spectrum>

Spectrum is a monthly community magazine serving East Woodhay and Woolton Hill. It is run by a committee of volunteers and is a not for profit publication. Reports on village activities and articles of local interest are welcomed for publication subject to the discretion of the editor. Copy should reach the editor by the seventh day of the month preceding publication and should be a maximum of 500 words. In the event of pressure for space, the editor reserves the right to reduce the length of the article while attempting to maintain the style of the writer and retaining as much content as possible. The editorial committee accepts no responsibility for the views expressed by Spectrum contributors or for the quality of goods and services provided by advertisers in this magazine.

The contents of this magazine are protected by copyright and nothing may be reprinted without prior permission.

louise benson mobile hairdresser
01635 38041 ANY TIME

quality hairdressing with a personal service

Cover: Foxgloves by Jim Hannington



Photographs by Christine Dalton.
 Top - Dark Green Fritillary on Pilot Hill.
 Bottom - Great spotted woodpecker feeding its young in her garden.



ABOUT

Hannington & Green offer a wide range of electrical services in domestic, industrial and commercial installation, data installation, inspection and testing, and property maintenance.

SERVICES

- Electrical Installation
 - Data Installation
 - Inspection & Testing
 - Property Maintenance
- Office Design & Partitioning
 - Building Services

CONTACT

☎ 01635 285354

✉ info@hanningtongreen.co.uk



GOLD & GREY
 Elegant English Interiors

INTERIOR DESIGN
 UPHOLSTERY
 CURTAINS & BLINDS
 WALLPAPERS
 FABRICS

Call: 07795 247 142

Info@GoldAndGrey.uk
WWW.GOLDANDGREY.UK

TUITION IN FRENCH AND GERMAN

Would you like to brush up your language skills? Would you like to learn a new language from scratch? Does your child need that extra edge at GCSE or A level?

I offer one to one tuition in the relaxed surroundings of my own home with flexible tutoring focusing entirely on your needs. I am a former Head of Department and examiner for The University of Cambridge Examination Board.

Recommendations available.

Contact Carolyn Wood on 01635-254140 or 07799 586263.

THE HIGHCLERE
**RED
HOUSE**

**EAT IN OR
TAKEAWAY**



Full Menu & Pizza Menu
Tuesday - Saturday 12-9pm

01635 255 531

www.thehighclereredhouse.com

Redlands Property Services Ltd

Specialist in All Aspects of Oil Fired Heating and Plumbing

New Boiler Installations, Servicing, Breakdowns, Oil Tank Replacements
Underfloor Heating, Mains Pressure Hot Water Cylinders Installations

All Work Guaranteed/Free Quotes

Please call : **James Mead**

OFTEC Registered Company C8170

Tel 01189 810 310 / 01635 282 172 Mob 07795 063 067
www.rpsllp.co.uk email boilersupport@rpsllp.co.uk




WELLNESS PILATES

STUDIO
Now Open!



Book Online
www.wellness-pilates.co.uk

Get the App
explore.mindbodyonline.com/mindbody-app

INFO@WELLNESS-PILATES.CO.UK
07944646357
WOOLTON HILL BUSINESS CENTRE
TRADE STREET
WOOLTON HILL
RG20 9UJ

AREA SWEEP

CHIMNEY SWEEP

A PROFESSIONAL CHIMNEY SWEEP SERVICE
CLEAN RELIABLE BRUSH AND VACUUM
FULLY INSURED MANY YEARS EXPERIENCE

AGA'S
RAYBURNS
JETMASTERS
ALL OPEN FIRES
WOODBURNERS
NEST REMOVALS
OIL FIRED BOILERS
SWEEPING CERTIFICATES ISSUED
CAPS AND COWLS SUPPLIED AND FITTED



CALL DARREN

01635 569195/07900398678

areasweep@btinternet.com

*Antique Silver & Gold
Bought, sold & valued*



*Edward, Reis Silverware,
Ball Hill.*

Tel. 01635 250505

e.reis@tiscali.co.uk

 **G A BUTLER & SONS LTD**
Specialist Tree Surgeons

01635 254 771

- Tree Surgery
- Hedge Cutting
- Stump Grinding
- Seasoned Logs
- Wood Chippings
- Fencing



www.lopit.co.uk



Worried About New Housing Developments In Your Local Area?

Share Our Concern About This Amazing Countryside?

East Woodhay Parish Neighbourhood Plan (2021-2029)

This is Your Once-in-10-Year Opportunity to Influence What Happens Next.

The Neighbourhood Plan is an important, legal document which will help shape where we live - influencing all future Planning Applications in the Parish – it needs YOUR input to help protect our rural environment.

Want to know more?

- Go to <http://www.eastwoodhay-pc.gov.uk> to view the Neighbourhood Plan.
- Can't go online? Contact Amy, Parish Clerk at: clerk@eastwoodhay-pc.gov.uk or telephone: 07855 275336
- We need to hear from you – what you like about it / what you would like to see added... Please tell us by completing a Feedback Form (on the website) or email: clerk@eastwoodhay-pc.gov.uk or write to: Amy White, East Woodhay Parish Council, Guilton Ash, Tile Barn, Woolton Hill, RG20 9UX.
- Come talk to us in East Woodhay Village Hall / Woolton Hill Church Hall, or via Zoom (details of when/where on Parish notice boards and website).

**DON'T MISS THE CHANCE
TO HAVE YOUR SAY.**

**RESPOND BY:
5pm on MONDAY 9th AUGUST 2021**

East Woodhay Parish Council



August is often a quiet time for the Parish Council but not so this year. We are working hard on the public consultation of the Neighbourhood Plan, a document that will help influence planning decisions in our Parish. We still need your feedback; do take a look at our website (www.eastwoodhay-pc.gov.uk) or contact Amy White, our Clerk (07855 275336) for more information on how you can participate.

Hedges: It is at this time of year when our gardens are in full bloom. Whilst you need to be very careful to ensure that you do not cut any garden hedges where you see nesting birds, boundary hedges can quickly grow to overhang the street or pavement. These should be trimmed to the edge of the pavement to ensure they do not impede access by pedestrians. Likewise overhanging branches from trees can cause injury to the unsuspecting walker. The legal height requirement is at least 2.1m from the ground.

Broadband: With increasing numbers of us working from home, internet use and the associated issues of poor download speed can cause real headaches. Thank you to those of you who have expressed an interest in getting broadband to your premises via BT Openreach. Please keep an eye on our website and facebook for updates on where we are investigating this project for East Woodhay.

Amy White, Clerk to East Woodhay Parish Council

Tel: 07855 275336 clerk@eastwoodhay-pc.gov.uk www.eastwoodhay-pc.gov.uk

Kintbury and Woolton Hill Photography Competition 2019

Firstly we would like to thank everyone for taking part and apologise for the delay courtesy of COVID-19. There clearly is a lot of photographic talent in the local area, as we received some beautiful images. A team of staff from both sites selected a collection of images that we felt best represented the local beauty spots of both surgeries and are planning to have these images framed and hung when we decorate the surgeries over the next year.

Hopefully viewing these scenes of nature at the surgery will help staff and visitors feel better emotionally, and contribute to their physical wellbeing by helping to reduce their blood pressure, heart rate, muscle tension, and the production of stress hormones.

The winning images selected were taken by: 1. Cedric Cottrell, 2. Simon Ball 3. Alan Teece. As a token of our appreciation for their efforts, we have awarded them each with a £20 John Lewis voucher.


We are keen to find some more images that are more immediately recognisable as Kintbury, so we would welcome any further images from budding photographers who are happy to have their work hung at the surgeries. For those who would like their image submissions back, please contact Laura Gilpin (laura.gilpin@nhs.net) to arrange to collect them.

Thank you

The Kintbury and Woolton Hill Surgery Teams

TT Garden Care
Private & Commercial Maintenance
 Hedge Cutting - Lawn Care - Fencing - Small Tree Work
 Turfing - Weed Control (NPTC Qualified)
 Free estimates on request
 Trevor Thomas
 T : 07949 995658
 01635 865604
 E : tt4gardencare@btinternet.com

Arthur A Beaver Ltd
 ESTABLISHED 1909
 Building Contractors
 Heating and Sanitary Engineers



INSTALLATIONS
 REPAIRS
 MAINTENANCE
 SYSTEM UPDATES
 BOILER CHANGES
 QUALITY WORKMANSHIP
 & MATERIALS
 ALL ASSOCIATED
 BUILDING
 WORK UNDERTAKEN
 INCLUDING
 ELECTRICAL WORK
 DOMESTIC & COMMERCIAL
 FREE ESTIMATES & COMPETITIVE PRICES
 Tel 01635 253240

**P J Cole Plastering
 & Brickwork**

- ✓ Qualified and reliable local bricklayer and plasterer
- ✓ All types of plastering, floor screeds, artexing/plastering over artexed ceilings, coving, tiling, garden walls, patios and extensions undertaken
- ✓ Fully insured
- ✓ No job too small
- ✓ References available
- ✓ Quotations available upon request

Please contact 07771 865621 or 01635 253300 for further information

LOCK & McDERMOTT LTD
Painters and Decorators
 Qualified with over 30 years' experience working in the private sector
 TRADING STANDARDS APPROVED TRADER
 CRB CHECKED

telephone: 01264 351094 and 01264 363267
 email: lynda861@btinternet.com
 or j.lock094@btinternet.com



East Woodhay Flower & Produce Show

Saturday 21 August 2021
East Woodhay Village Hall - 2pm



Adults £1 - Children Free

Join the fun - Still time to enter!

**Classes for the whole family including Fruit & Veg, Flower arranging,
 Baking, Handicrafts, Photography and Childrens' classes**

Visit www.eastwoodhayflowershow.co.uk for classes and entry form
 or Telephone 01635 254114

East Woodhay Silver Band
Sidestalls
BBQ
Find us on Facebook



Penwood Nurseries

Thousands of different hardy trees, shrubs, herbaceous perennials, roses, conifers, fruit, climbers, ferns and grasses are always available.
A family run business. Most of our stock is produced on site and we are happy to help you find just what you are looking for.

enquiries@penwoodnurseries.co.uk www.penwoodnurseries.co.uk
The Drove, Penwood, Newbury RG20 9EW
01635 254366



Woolton Hill Preschool
www.wooltonhillpreschool.org.uk
The Church Hall, Woolton Hill, Newbury

30 years of experience, Achieved 'Good' in 2016 Ofsted report
Secure, fun & caring environment
Friendly, loyal & Qualified staff
Strong curriculum based learning through play
French, Debutots & Talking tots at no extra cost!
Places for ages 2-5, government grant available
Breakfast club available for all children up to age 8
The staff walk the children to the Junior and Infants school
Flexible term-time hours. Mon-Thurs 8am-3pm Fri 8am- 12.30pm
Contact on: 01635 254721 Or email at: hello@wooltonhillpreschool.org.uk





TIMBUTLER Golf
The Golf Range @ Newbury Racecourse

"Amazing Golf Lessons" with PGA Professional Tim Butler
Lesson Vouchers can also be emailed as last minute gifts

"Tim will make you a better golfer, highly recommended"

Call Tim on 07810 523040 or email timbutlergolf@gmail.com
www.timbutlergolf.co.uk

East Woodhay Society



Help Protect our Rural Environment

One of the joys of living in this area is that we can walk in the countryside, along footpaths and the views are simply stunning. I meet so many people who have that shared joy and being able to enjoy the area has had particular importance during this pandemic time.

This brings me to the point that, following many years of hard work, the East Woodhay Parish Council have produced a Neighbourhood Plan, and this will have legal standing for all future developments once it has been approved at a formal referendum i.e. at a Basingstoke & Deane Council organised vote, which could be next May.

However, before it gets to that stage it is important that we make comment. It is an important part of the process. Please take a look at the Neighbourhood Plan and let Amy White, the Parish Clerk (clerk@eastwoodhay-pc.gov.uk) know your thoughts. What is important to you? Is there anything missing?

Thanks to John Priest for this stunning photo near Gore End

To give a flavour of the document

I have extracted the Vision of the East Woodhay Neighbourhood Plan:

The Parish of East Woodhay, which consists of the village of Woolton Hill, a number of hamlets and the two

conservation areas of North End and East End, will maintain its rural character. The landscape, views, green environment and built heritage will be protected. Existing local facilities and businesses will be supported. Residents of all ages will feel safe, participate in the community and be proud to live here.

The plan is on the Parish Council website <http://www.eastwoodhay-pc.gov.uk> or if you need a paper copy do call Amy on 07855 275336. Also contact Amy to see when the latest question and answer face-to-face or zoom sessions are scheduled.

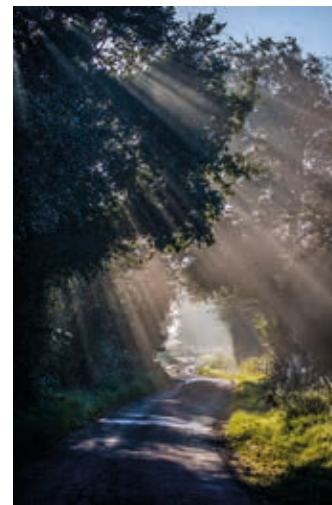
We have until 9th August to respond during this round of public consultation.

'Coronavirus Newsletters'

It is possible that by the time this goes to print the government will have ended the restrictions introduced due to the Covid-19 pandemic. It is therefore likely we will be ending the Coronavirus Newsletters but, if that is the situation, please be reassured I will start again with the monthly updates to EWS members.

I will also publish the latest local Covid infection numbers on the Woolton Hill website (www.wooltonhill.com). I notice that there has been an increase locally and on the 1st July our local numbers are 15. Very recently the number was consistently zero which is a reminder to us all to still take care.

Mark Rand, Chair EWS
Email: eastwoodhaysociety@gmail.com
Website: www.wooltonhill.com
Telephone: 250898





Aardvark

PROFESSIONAL OVEN AND
CARPET CLEANING SERVICES

AARDVARKOVENCLEANING.COM
AARDVARKCARPET-CLEANING.COM
07783 810806

M.W. SUTTON

Roofing Specialists
3 Byeways, Highclere

Family business established 1972

Contact Jason Sutton
for free quotations:

Mobile 07770 626230
Home 01635 253951
suttonroofing@yahoo.co.uk

Fully insured to carry out
all your roofing needs

RJ Lampard & Company Ltd

A family run business Est 1976



- Specialist Drainage & Ditching Works
- Road Repairs and Road Construction
- Civil Engineering Works - Concreting etc
- Own fleet of plant and machinery
- Fully qualified and experienced operatives

For further information please call:-

01635 253137 / 07768 201370 or email: rj@rjlampard.co.uk

C & E GROUNDWORKS LTD

Experienced Groundworks & Construction Company In Newbury & Surrounding Areas



- Buildings • Foundations
- Paving & patio services
- Specialists in resin bond
- Turf & Astro turf • Concreting
- Fencing • Landscaping

feel free to contact us today for
a FREE QUOTATION

Based in Newbury C & E GROUNDWORKS LTD are a well known company that have a superb reputation for providing a range of groundworks from drainage to driveways.

cegroundworks@hotmail.co.uk 07500986386 01635 34601 www.cegroundworks.co.uk



A D CARPENTRY & BUILDING

- Joinery
- Built-in storage
- Doors and windows
- First and second fix
- Rotten wood
- Refurbishments

Free estimates, competitive prices -
call Andrew **07979 455903**

Experienced, qualified

TUTORS

English, Mathematics

Sciences, Languages

History, Computing

English as a foreign language

All ages, all levels

On-line lessons available

telephone 01635 253942

email: susan.trinder@googlemail.com

Chilton House Mitchells

Interior Design, Home Renovations & Project Management

Whether you are looking for a full interior design service, or just some inspiration, I'd love to hear from you. Offering a selection of design options, ranging from initial consultation and design boards, through to full design and on-site management of your project.

Interior Design • Space Planning • Inspiration Boards



Jo Mitchell
Tel: 0777 579 1344
Email: jo@chiltonhousemitchells.com
www.chiltonhousemitchells.com/services





Pure Clean Window Cleaning

also frames, canopies, cladding, conservatories, guttering & soffits

Call Claire or Martin on 01635 523917 or 07958 207451
email kimble@techie.com



Highclere Osteopathy

Sara Winchcombe Registered Osteopath
Neck, back, any joint pain and sports injuries
07748 185 713
sara@highclereosteopathy.co.uk
www.highclereosteopathy.co.uk

TERRAWERX

- Groundworks, Drainage & Landscape Services
- Sewage Treatment Plants & Soakaways
- Owner Operator Mini Excavator Hire
- Fully Qualified, Insured & Experienced
- For more information or a quotation please contact
Matthew - 01635 261551 / 07786 993882 or
info@terrawerx.co.uk

East Woodhay Women's Institute



June 2021

I was lucky enough to have a lift to our "AGM in the garden". I really appreciated being able to look around me at the countryside – we really do have a 'green and pleasant land'.

We were not a big meeting, but it was lovely to see ladies who I haven't seen or spoken to for many months.

The AGM part of our meeting was quick & painless and we heard about our "tentative" plans for the future.

Really we were just happy to be together again in such a beautiful garden (thank you, Pat) with a cup of tea someone else had made.

Afterwards, we gave a lift to a fellow member and once again I was conscious of what a maze that area of Hampshire is. Our driver knew where she was going and skilfully negotiated the flower-filled lanes. Every bend seemed to have a walker, a cyclist, a motorcyclist, or a car waiting for us. I was struck by how fast people drove, seemed to indicate "we live here, you don't".

Our last meeting was in the garden at Simdra, East End on the 13th of July and I will report on that in the next issue of Spectrum.

The next WI Coffee Morning, open to everyone, will be at Manton in Ball Hill on Tuesday 10th August at 10.30am and not on 15th August as previously published.

PS – I have found a useful map in "A History of the Parish of East Woodhay" which I will take with me if the need arises.

June Milsom

Adi House Plumbing and Heating

Local Domestic Plumbing and Heating Engineer
Over 30 years experience
Fully Insured

All types of plumbing works including:
Bathroom installations
Water softeners
Heating power flushing
Pipework alterations and installations

0783666092
Adrianhouse1@gmail.com



PAUL S. WALDEN
Painter & Decorator

For all your painting and decorating requirements



City & Guilds Qualified
Interior & Exterior
25 years' experience
all work guaranteed

Tel no.: 07802 578934



Andy Jones

Window Cleaning

07876 028905

Window Cleaning - Gutter Clearance - Fascia & Soffit Cleaning
Conservatories - Solar Panels

Call or text for a no obligation quotation on 07876 028905
contact@andyjoneswindowcleaning.co.uk
www.andyjoneswindowcleaning.co.uk



@oakwaytreesurgery






TREE SURGERY | FENCING | STUMP GRINDING | HEDGE CUTTING | PADDOCK MAINTENANCE

 07979 490697
 info@oakwaytreesurgery.co.uk
 oakwaytreesurgery.co.uk



the
Alexander
Technique

Relieve back & neck pain
Enhance health & well-being
Improve posture & stamina

for lessons and courses:
Judith Turner MSTAT
01635 253981
07771 896696
judeturner7@gmail.com
www.jt-alexandertechnique.co.uk





Barking Boutique

Professional Dog Grooming

**Patient and Caring Service for
all Breeds**

Clipping, Hand Stripping,
Scissoring, De-matting,
Bathing, Nail & Ear Care





Alison Sutton 07706695773
barkingboutique@yahoo.co.uk

Windfield House, Byeways, Highclere,
Newbury, Berkshire RG20 9PA

MARIO'S
PLUMBING

25 years' experience

- gas/oil boiler servicing and replacements
- power flushing
- central heating and general plumbing

GAS-SAFE registered

Telephone Mario
07967123819

Thyme

The food you would have cooked

- ✦ Can I help you fill your fridge or freezer?
- ✦ Freshly made, nutritious food for busy people.
- ✦ Menu of main dishes and puddings to suit an informal supper with family or friends.
- ✦ Menus also available for dinner parties, family or special celebrations.
- ✦ All dishes made to order and delivered locally.

Rhona Everard

Mob: 077969 46664
Email: thymehomecook@gmail.com
Web: www.facebook.com/thymehomecook

Light & Day Electrics

Part-P & 17th Edition qualified

- New installations
- New circuits
- Rewire
- Consumer unit replacement
- Extend Circuits
- Lighting
- Garages
- Outside Buildings
- Smoke alarms
- Fault Finding

For all your electrical needs & Free estimate

Phone Jeremy

01635 278 485
07885 985 275

MATTHEWS RESTORATION

EST. 1978



Antique and Modern Furniture Restoration
French Polishing Specialists
Handrails, Kitchen Work Tops, Doors etc

✉ :brian@matthewsrestoration.co.uk

☎ :07768041922 | 01635 38678

www.matthewsrestoration.co.uk

Woolton Hill Junior School



Calshot Trip!

This year the year six's at WHJS got to go on a really fun school trip at a place called Calshot for a week. The whole week was full of fun activities! Some of my favourites were: Areotrek (just an activity that is challenging and sometimes uses zipline like tree runners if you have ever been there), rock climbing and sailing. Sailing was great fun because we were in partners with one of our friends, I was with my friend Emily and we had a great time! Our dorms were 2-3 people in a room which was good because they are most likely the people that you asked at school that you would like to be with them.

Skiing was also great fun, lots of children were amazing at it (but I wasn't so good!) Well, this is going to be my last article before I move onto secondary school, so it's a farewell from me!

I hope that you have stayed safe and well!

Daisy Humphrey :)

'Hello again, this month I am going to tell you about the amazing residential trip that the Year 6's took to Calshot Activity Centre (in Southampton).

We went for 5 days, we stayed over in dorms at the centre and spent the days and evenings doing lots of different activities. My dorm had 3 people in and we could see the sea and the ferrys from our window, it was fun sharing a room with my friends. It was an action packed week where we all had the chance to try some things we had never done before. We did aero trek (you are attached to a harness and going round a course that is up high in the ceiling of an aeroplane hanger), skiing, rock climbing, archery, ringos (you sit in a big inflatable donut and get pushed down the dry ski slope!), sailing, kayaking, laser climb (climbing a low level/bouldering wall and they project interactive games onto the wall). We did a few team building activities where we had to work together to complete the obstacle course or build things as a team. We did a scavenger hunt on the beach and on the last night we had a movie night and bought snacks from the cafe and took our pillows to the movie room to lie down and watch the movie. The food was amazing too! I had a cooked breakfast every morning and I loved the flapjack snacks we got in between the activities.

I loved the whole week but the best thing was sailing because when we got stuck and needed to turn round we could grab the instructors speed boat and go zooming across the sea.

Five teachers came with us from WHJS and I just want to say Thank You so much to all the staff for making this happen. We have not been able to do a lot over the past year so I am very glad we managed to go on our residential before we all leave WHJS and go off to Secondary School in September.

Stay safe.

Solly

THE 1:1 DIET

by Cambridge Weight Plan

New thinking.
New you!

"...for greater weight loss with one-to-one support..."

Based in Woolton Hill, covering Newbury and surrounding areas

Give it a go!

Flexible Plans one-to-one support

Contact **Rebecca Cooke**
your local Consultant:

tel 07787 316339 email 121dietbycwp@gmail.com
web one2onediet.com/RCooke

smarthire

— vehicle rental —

01635 552200

SmarthireVehicleRental.co.uk

Third Street, Greenham Business Park,
Newbury RG19 6HW

- CARS
- VANS
- MINIBUSES
- TRUCKS



YEW TREE
Garden Centre

Ball Hill, Newbury
RG20 0NG

www.yewtreegc.co.uk
01635 255250

07973 539666 | simon@gardenhousefurniture.com



Beautifully Crafted Outdoor Furniture
www.gardenhousefurniture.com

Highclere Garden Machinery

- *Service and Repair
- *Restoration*
- *Blade Sharpening * Welding and General Engineering*
- *We buy and sell second-hand garden machinery*
- *Mowers* Strimmer's*Chainsaws*Blowers*
- *Generators*Hedge Cutters* etc

Read our customer reviews on:

@highcleregardenmachinery

tel: 07970 821278 highcleregardenmachinery@outlook.com



Learn to Draw & Paint Daytime Adult Classes

- 10 week art courses - held throughout the year
- Designed for absolute beginners to intermediates
- Warm and welcoming environment
- Pencil, Watercolour and Acrylic (as well as other mediums) every course
- Morning or Afternoon sessions available
- Held at St Marys Church, Shaw



Get in touch for more details or to book your space.
or visit our website www.creativeartclasses.co.uk
or email studio@creativeartclasses.co.uk
or call Carrie 07780 714656

KEITH LAWRENCE
KITCHEN BEDROOM & BATHROOM INSTALLATIONS



Planning to Completion
Traditional & Contemporary

FREE QUOTATIONS 01488 608789

3 Ermin Street, Stockcross, Berkshire RG20 8LG

www.lawrenceinstallations.co.uk 01488 608789



Woolton Hill Post Office and Stores

Post office, Newsagent, National Lottery
Off-Licence & General Stores

Post Office Open:

Monday to Friday 9am-5.30pm

Saturday 9am-12.30pm

We also hold Euros and Dollars



We also deliver newspapers in
surrounding 4 miles.
Woolton Hill Post Office & Stores
Broadlayings
Woolton Hill RG20 9TR
01635 253463

Dear friends,

The Clergy House, Flexford Close, Highclere

By the time you are reading this article decisions will have been made about so-called 'Freedom Day' when we all hope we can begin to look forward to greater normality in our daily lives. Of course this does not mean the Coronavirus crisis is over, the virus is still around, and many people are experiencing COVID-19 and its after-effects. The virus has the potential at any time to cause further severe disruption to our lives and our society. It's very likely that the winter months to come will be challenging for us and for our NHS. We need to remain vigilant, to use common sense, to be aware of one another in terms of vulnerability, where it seems wise to still follow the guidelines we have observed over past months showing care for one another.

As I look back over the past 16 months there is so much for which I am thankful. However, when times are challenging it is perhaps difficult to have a spirit of thankfulness. I believe the period since March 2020 has seen innumerable expressions of God's love to all people. One common feature we have all witnessed is a desire from people to express appreciation for what so many of our fellow citizens have done to help others through a very difficult time in our national life. Our wonderful NHS staff have been on the frontline and have gone above and beyond their calling in caring for the sick and suffering. Delivery drivers, shop and supermarket workers, refuse collectors, postal workers, funeral directors – these are folk who in normal times we perhaps take for granted – maybe we appreciate them a little more now! Then, of course, the very many voluntary workers across our communities – people who have collected prescriptions, done shopping or errands for neighbours, manned food banks, faithfully keeping an eye on those living alone, the elderly, the vulnerable, and those who since before Christmas have helped with the amazing national vaccination roll-out. We can, and should, be thankful for these different groups of wonderful people!

Jesus said that he is the light of the world – his example invites you and me to be a light in the world – to do what we can to bear witness to all that is good in the best of humanity. As Mother Teresa once said, "It is better to light one candle than to curse the darkness". Or as someone else put it, "We are not all called to do great things, but we are all called to do small things with great love".

Canon Marvin.

From the Church Registers: June 2021

Baptism: we ask God's blessing on the life of...

13th June	Ivo Alexander Kilner	Ashmansworth
13th June	Oscar Louis Alexander Colville Brown	East Woodhay
27th June	Theodore William Snoeck	Ashmansworth
27th June	Oliver Henry Jones	Woolton Hill

Funeral: may they rest in peace

3rd June	Barbara Millicent Callow	Highclere
15th June	Lionel Frederick Lawrence	Highclere
		West Berkshire Crematorium
17th June	Cynthia Evelyn Culley	Woolton Hill
28th June	David Matthew Cageao	Woolton Hill

NORTH WEST HAMPSHIRE BENEFICE

Ashmansworth + Crux Easton + East Woodhay + Highclere + Woolton Hill

...making Christ known in our communities

Church Services AUGUST 2021

This month we assume all services can continue in church and we rejoice that we are able to hold our annual August 'summer' pilgrimage around our churches. Services will be held in compliance with any regulations in place at the time and any necessary changes will be posted on church noticeboards

SUN 1st AUG <i>Trinity 9</i>	Benefice Communion <i>Baptism</i> <i>Baptism</i>	East Woodhay <i>Woolton Hill</i> <i>Highclere</i>	10.00am <i>12noon</i> <i>12noon</i>
SUN 8th <i>Trinity 10</i>	Benefice Communion <i>Baptism</i>	Woolton Hill <i>East Woodhay</i>	10.00am <i>12noon</i>
SUN 15th <i>Blessed Virgin Mary</i>	Benefice Communion <i>Baptism</i>	Highclere <i>Woolton Hill</i>	10.00am <i>12noon</i>
SUN 22nd <i>Trinity 12</i>	Benefice Communion <i>Baptism</i>	Ashmansworth <i>Highclere</i>	10.00am <i>12noon</i>
SUN 29th <i>Trinity 13</i>	Benefice Communion <i>Baptism</i> <i>Baptism</i>	Crux Easton <i>Woolton Hill</i> <i>Highclere</i>	10.00am <i>12noon</i> <i>12noon</i>

WED 4th, 11th, 18th, 25th Aug & 1st Sept Holy Communion 10.00am Woolton Hill

Rector: Revd Canon Christine Dale (*Rest day: Friday*)

The Rectory, The Mount, Woolton Hill, Newbury RG20 9QZ 253323

Associate Priest: Revd Canon Marvin Bamforth 254718

Readers: Mary Herbert 255700, Horace Mitchell 254677, Mike Sarson 07913 943504

Reader Emeritus: Rosemary Cahill 253306 **Lay preacher:** Angela Myers 254559



OUR SURGERIES:

Burlyns Surgery, Burlyns, East Woodhay, Newbury, Berkshire, RG20 0NU.

Foxhold House Surgery, Crookham Common, Thatcham, Berkshire, RG19 8EL



We can help you meet all your pet and equine healthcare needs, with professional and caring staff who can treat your animal at a time that suits you. Out vets offer an emergency service giving you 24 hour reassurance.

...we're here to listen

24 hour phonenumber: 01635 254544

www.coachhousevets.com

The Friendly www.friendlyoilservice.com

Oil Boiler Service Ltd

Fully qualified and insured
oil boiler service & repair specialists

Simon, Nick & Paul

01635 282992



Bright Sparks Nursery School



East Woodhay Village Hall, Heath End, Newbury (only 4 miles)

We have an **Outstanding** OFSTED report

We have fully qualified teachers including specialists for
French, Music, Dance, Football, Fitness and Forest School

Places are offered to children aged 2 - 5 years

Head Teacher: Mrs Cherida Daniel B.A. Hons, Mont. Dip. EYPS

www.brightsparksnursery.co.uk Telephone: 01747 870432 or 07768123139



Your local renewable energy specialist

Now installing EV chargers for solar PV

Heat Pump servicing - Mitsubishi Accredited
PV repairs & batteries - MCS/NICEIC certified

Contact Paul Gibbons on 07791 364408
or visit www.greenwiresolar.co.uk



Greenwire Solar, October Cottage, Broadlayings, Woolton Hill, Newbury RG20 9TT

From The Archives

August 1945

Penny-a-Week Fund

As Chairman of the Penny-a-Week Fund for Woolton Hill, I feel the following information will be of interest to all those who collected and contributed so regularly and so generously since April, 1942. The sum sent to headquarters in monthly instalments has amounted to £521 12s 6d. [Apparently this equates to about £4,000 today!]

Although the Penny-a-Week Fund has closed owing to the fact that Prisoners' parcels are no longer necessary, please give to the Red Cross whenever the opportunity arises, as there is still much work for the Red Cross and your donations will be so very helpful and so gratefully received.

Welcome Home Funds

The Organisers of the Dance held on July 18th in aid of the Welcome Home Funds would like to thank everyone in the village who responded so well and did their best to help make this dance a success. Eight useful raffles were given—a bottle of port and a bottle of whisky, both by Mrs. Eliot-Cohen, a fruit cake by Mrs. Curtis, box of 100 cigarettes by Mrs. D. Jones, Underwear by Miss M. M. Goddard, one dozen eggs by Miss Audrey Taylor, a huge box of groceries by Mrs. H. Taylor, a pair of stockings by Mrs. Wooldridge; our very appreciative thanks go out to them all. The refreshments were well carried out by Mrs. Whitlock and her efficient helpers, the door keepers and M.C. were kept very busy and did their jobs in a happy manner cheering to us all, and the prize winners were all pleased with their prizes. Over 170 people were present, not forgetting the Chairman who kindly came to draw for the raffles. [This event raised £38 18 7 1/2]

Handy4Jobs

- Painting Decorating & Tiling
- Kitchen & Bathroom Fitting
- All aspects of Gardening & Fencing
- Window Cleaning, Facias & Guttering



General DIY & Gardening ~ Wayne Murkett, Handyman
07796813580 ~ 01635 31016 ~ 07796950639

Personal Computers

new - repairs - upgrades - data recovery - no job too small

phone John on 01635 254102

the garden carpenter

decks, fences, gates and sheds
uncompromising quality

for a free estimate contact Duncan Graham
www.thegardencarpenter.com 01635 552301

SHAPE UP YOUR WEEK

Burghclere Hall

Monday Hone 'N' Tone
Beginners / Interm.

Body Blast! 6.45-7.30pm.
Suits all levels (£6.00)

7.45-8.45pm. (£6.00)

Tuesday Super Sweaty Step!

Help achieve your fitness goal. 7.30-8.30pm.
(£6.00)

Thursday HITT!

Torch calories with this energetic class 7.30-8.30pm.
(£6.00)

Fully Qualified Instructor, Sally

01635 278680



Building & Construction

Loft Conversions
Extensions
Kitchens
Bathrooms
Refurbishments
Patios
Double glazing

Small selection of building work we undertake

For all your building projects and free estimate

Call Jeremy

01635 278 485
07885 985 275

www.watermill-sounds.co.uk



Chartered financial advice &
Wealth Management services
www.essential-wealth.co.uk
Telephone: 01488 669840
enquiries@essential-wealth.co.uk

Mown & Grown

Landscaping ~ Tree Surgery ~ Garden Maintenance

- Hedge cutting
- Tree work
- Grass cutting
- Garden maintenance
- Fencing
- Fully insured

for a free quotation call 01635 745 060

MownAndGrownNewbury@Gmail.Com ~ Visit our website: MownAndGrown.Net

Wonders with Wood

Hardy's Custom-Made Carpentry & Joinery

Chris Hardy
Bruan Road
Newbury

07872124367
chris.hardy72@gmail.com

CONVENIENT
**HW
CLEANING
SERVICES**
CLEANING SOLUTIONS

- Mobile professional detailing and valeting for all vehicles
- Pressure wash treatments for driveways and patios
- Carpet and upholstery cleaning
- Domestic / Commercial / End of tenancy cleans
- Anti-viral and bacterial deep sanitization fog treatments - domestic and commercial

Please call: 0791 7702257

www.hwcleaningservices.com



Wildflowers Appear

Towards the end of June and the beginning of July, some of you may have noticed a transformation taking place on the ground next to and around the 'Tesco Roundabout'. Unusually, this was not road works, but the sudden appearance of a swathe of wild flowers, all in bloom simultaneously. How incredible that so many different species and colours can merge together to create a carpet of such beauty for local people to enjoy, not only the members of Woolton Hill Gardeners' Club.

I am sure you will join me in thanking West Berkshire Council for funding the project and Wildflower Turf Ltd for supplying and laying the turf in March, ready for the flowering season this summer. The Hewetson-Brown family, who set up the company, farm land in Overton and began growing turf in 1982 using a soil-less system. They diversified into wildflower turf in 2003. Interestingly, we had the pleasure of meeting a family member on the train travelling back from London about four years ago and had the most fascinating journey home learning about this exciting initiative.

There can be as many as 34 species of wildflower in the turf. Different mixes of seed are grown to suit different conditions, such as soil

fertility, aspect, climate and environment, from meadow land near a stream to roadside verges, cliff edges and high ground. During renovation projects the seed from existing species is often collected and forms part of the mix of seeds. Wildflower turf acts as a host to wildlife such as bees, butterflies and moths and, sometimes, voles and slow worms. In a project at Popley Ponds in Basingstoke the meadow turf was designed to include species of plants suitable for great-crested newts.

You may have heard of some of these typical plants; Birdsfoot Trefoil, Cats Ear, Common Toadflax, Common Sorrel, Bladder Campion, Common Knapweed, Common Vetch, Betony and Autumn Hawkbit. Or some annuals like Blue Cornflower, White Corn Chamomile and Flanders Poppy which all self-seed. Or grasses like Sweet Vernal Grass, Meadow Foxtail and Quaking Grass. But you won't find all of these plants growing together at 'Tesco Roundabout' as it really is 'Right Plant, Right Place'. By August I am not sure which flowers may still be in bloom but do drive up there and have a look. And if you have missed them, don't worry, they will all be back again next summer!

Lorna Rains



Pressurized hot water system?

Megaflo, Ozo, Ariston, Dimplex, Heatrae-Sadia, Tribune, Santon, Gledhill etc
All manufacturers recommend these systems are serviced regularly by qualified specialists



To book your service and ensure good safety and efficiency contact your local expert

Kevin Pearson Total Pressure Ltd.

New installation a speciality.

07971 250799 01635 253975 totalpressurelimited@gmail.com

National Women's Register



A morning walk was the first event planned for June. The group split into two with four members choosing what was intended to be a slightly shorter and easier route. In fact it turned out to be somewhat eventful, involving one member's small dog having to be carried through a herd of very inquisitive young cattle, then the owner becoming separated from both her dog and her shoe in the quagmire around the field gate while the rest of the walkers did their best to distract the beasts and come to the rescue. All ended well though, and both groups met as planned for very welcome refreshments in another member's garden.

At the end of the lovely sunny spell in mid-June we went to enjoy a tour of Old Camps garden at Headley. Just as the clouds began to gather we met to hear its history; originally a Roman settlement, then a 1920s bungalow built by a local teacher in the Roman style with an inner courtyard in recognition of the site's roots and purchased in 2007 by its current owners, Adam and Heidi Veterec, who converted it into a contemporary, cedar-clad dwelling with a glass atrium at its heart and an indoor, arid garden in acknowledgement of its past history.

The south facing garden, set in over an acre and previously featured on Gardeners' World, gives wonderful views over

Watership Down. We enjoyed the Mediterranean terrace, herbaceous borders, desert garden, prairie and tropical borders, an orchard, knot garden, woodland walk and more, and ended the evening with wonderful tea and cake. And shortly afterwards it started raining!

A third outdoor meeting for the month was hosted by one of our members as she led us round her garden displaying the many pieces of pottery that she has so skilfully created. Little owls sat in trees, a piglet rested under a bench and a large leaf and poppy head lay on the lawn. These were just a few of the objects she has crafted since taking up her hobby with clay some years ago.

We were also given a detailed talk and demonstration of the processes employed in the creation of her pieces and we admired her skill and artistry.

Wine and tapas to end the evening just added to the joy we all experienced in being able to meet again in person and talk together as a group.



1-1 Drum Lessons

All ages & skill levels welcome
Discounts for block bookings
First 30 minute assessment free
Newbury studio

www.samslatermusic.co.uk/book-a-lesson tel 07428172160 sam@samslatermusic.co.uk

OVEN SOLUTIONS

Put That Sparkle Back Into Your Oven

- Full non-caustic deep clean
- Cleans ovens, hobs, extractors & barbecues
- Replacement filters, seals, bulbs & elements
- Non-franchise established 14 years
- Child, pet & eco friendly



see our reviews
on yell.com

Peter Hudson 07733 253 563 Oven-Solutions.co.uk

Super Saturday No.2

When the various COVID restrictions forced us to replace our 2020 annual fete with just a cake and plant stall (plus homemade face masks!) we were truly humbled by the generous support shown us by our local community. We little thought then that COVID would still be with us a year later. Ever optimistic, we decided to aim to expand our 2021 event as much as possible but still with regard to whatever rules might still be in place on July 3rd.

How lucky we were when that day arrived! Only a few spots of rain, despite the ominous forecast. Plants, cakes and raffle did a steady trade, along with Teddy tombola, toys (including some spectacular adult Lego sets) cards and ice creams. So Super Saturday No.2 was a great success, raising over £1260 for St Thomas' church. Next project—replace the defunct church heating!

Thanks to all who supported us once again.

Bertha, Chris and Georgie



Home and Property Maintenance and Repairs

- Local professional family run business
- Internal and External decorating
- Kitchen and Bathroom fitting and tiling
- General building maintenance & repairs
- Fencing, decking and patios
- No job too small



Because everyone's home is their castle

www.highclerehandyman.co.uk

Call for free quotation on 07812 135045
or email: highclerehandyman@gmail.com

Gardens

*We all love our gardens and tend them with care,
Pruning and planting things all through the year.*

*First snowdrops and tulips; sweet blossom in Spring,
Bright colours through Summer, 'til Autumn's last fling.*

*We tour 'Open Gardens', impressive and grand,
Enjoying the cream teas, plant brochure in hand!*

*Huge ponds, beds of roses, scents waft on the breeze.
Lawns smooth like green velvet, magnificent trees.*

*Such beautiful borders, we guess there's a team
Of hardworking staff, not a slug to be seen!*

Moyra Harkness

ATH PLUMBING & HEATING

OFTEC Registered

- New boiler & system installations
- Mains pressure hot water cylinder -service & installation-
- Maintenance
- Insured, references available, free estimates
- Bathroom installation

*Please call Nigel Brown:
01635 254787 07979718427
athplumbingheating@gmail.com*

Airport Transfers



Professional service in luxury cars to anywhere in the UK for Business & Pleasure.

- Meet & Greet in the terminal, no waiting for shuttle buses
- Fully licensed, DBS enhanced checked
- Door to Door service, leave your own car at home
- Help with luggage
- Competitive prices
- All cards accepted

'Don't drive home tired, let us drive you in comfort and style'

Email: glntransfers@gmail.com

www.gln-transfers.co.uk

Tel: 07747 800707 or 01488 648719

R. D. RUTTERFORD

OIL FIRED
BOILER
MAINTENANCE

MEADOW VIEW
BROAD LAYINGS
WOOLTON HILL
NEWBURY
BERKSHIRE RG20 9TS

01635 253257
Mobile: 07771 610145



Professional, experienced
and reliable

Garden Design

Border Design

Border Maintenance

01264 738580
07920 425704

www.audreyrobinsongardendesign.co.uk



Local professional service tailor made to meet your requirements and budget

Purchase Ledger Processing

Invoicing and Credit Control

Bank Reconciliations

VAT Returns

Monthly Management Reports

Payroll Bureau

Tel: 07970 297940 Email: info@clerebookkeeping.co.uk

www.clerebookkeeping.co.uk

The Beeches, 2 Greenways, Woolton Hill, Newbury, Berkshire RG20 9TD



LOGS, COAL, AND
KINDLING
ring Richard 07990 585527

VG Furnishings. The Curtain Specialists.



01635 867804 • www.curtainspecialists.co.uk

East Woodhay Local History Society



At the time of writing (late June), the next easing of Covid restrictions were still delayed but the committee has decided to put plans in place for recommencing meetings this September. Val Pollitt has kindly arranged speakers and the programme can be found below.

New members are welcome and can pay at the first meeting (£7.50 pp). All meetings take place at the East Woodhay Village Hall, Heath End and start at 8pm.

We will alter the Covid safe plans we had already put together last year and adapt as necessary in line with Government rules. However, we are aware that some people may feel nervous if social distancing and masks are no longer necessary and can accommodate accordingly.

Please contact me at chrissie.dalton@yahoo.co.uk or on 07880 628 114 if you have any queries.

Chris Dalton (Secretary)

2021 Talks Synopses

20th September Sue Ellis: Anglo-Saxon Hoards

Sue describes the inspiring treasures of the Anglo Saxons through her examination of the Sutton Hoo burial and the Staffordshire hoard.

18th October Mike Robinson: The History of Farming

A loyal member of the society, Mike is also an authority on the development of agriculture. This talk is a sequel to his fascinating talk about agriculture in general and will focus this time on the local area, its estates and tenant farms.

15th November Phil Wood: The History of Newbury Pubs

Phil is an authority on the history of Newbury pubs and his talk will give us a lively insight into the story of the town's licensed premises.

2022

17th January Norman Powers: East Woodhay WI: The first 100 years.

Norman's talk will take us back to the life and times in the parish during the first 100 years of the East Woodhay W.I.

21st February AGM and Members' Ten-Minute Talks.

21st March Dan Allen: Women at War

Dan Allen of the Victorian Military Society gives us an insight into life for soldiers' wives & children in Victorian times at home & abroad.



Fully qualified and insured

Professional, friendly and reliable with attention to detail coupled with great value pricing

- Tree felling
 - Tree reduction
 - Climbing & aerial work
 - Stump removal
 - Hedge reduction
 - Site clearance
- Contact **Nigel Smith** on 07803 034716
 Email: nigel@highcleretreeworks.co.uk
 Visit us at www.highcleretreeworks.co.uk
 Emergency work undertaken



Proud winners of the
 Top 20 nurseries in the
 South East England
 award 2020



A welcoming and flexible nursery for children aged 3 months - 5 years

Henwick Court, Turnpike Road, Thatcham, Berkshire, RG18 3QY
 01635 528857 | www.tigersdaynurseries.co.uk



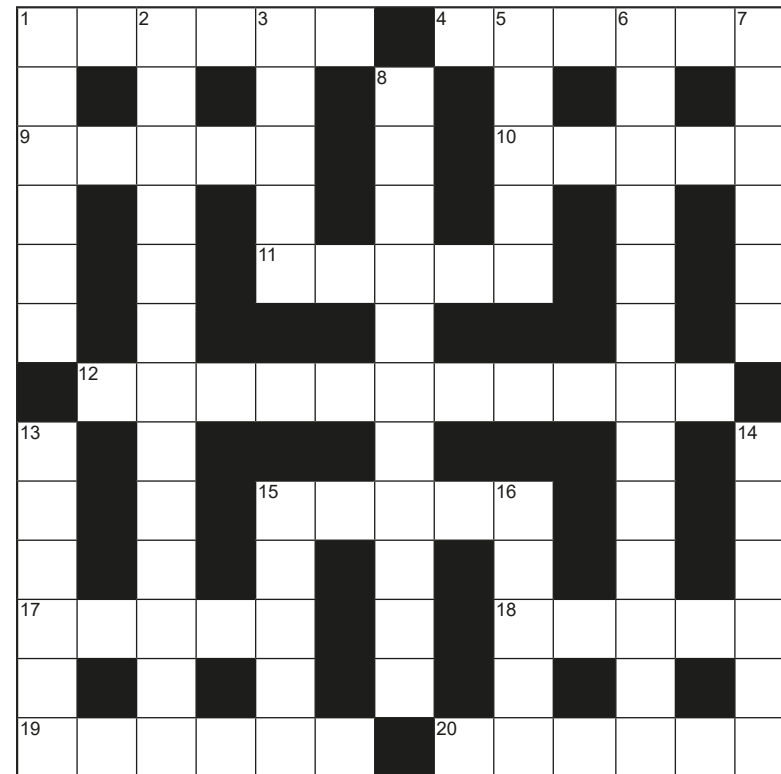
The Oakwood Clinic, Highclere Massage Therapy

- DEEP TISSUE MASSAGE
- AROMATHERAPY
- HOT STONE MASSAGE
- FACIAL MASSAGE
- REFLEXOLOGY
- EAR CANDLING

Monthly Offers. Gift Vouchers. Men by referral only.

Charlotte Piddington (ITEC)
www.theoakwoodclinic.co.uk
 07733442059

222



Answers crossword no 221
 Across: 1 Injury, 4 Farmer, 9 Dogma, 10 Parma, 11 Moire, 12 Mystery Play
 15 Chime, 17 Cheer, 18 Prowl, 19 Stylus, 20 Fledge
 Down: 1 Indigo, 2 Jiggery Pokery, 3 Realm, 5 Ample, 6 Marsh Marigold,
 7 Reason, 8 Antirrhinum, 13 Braces, 14 Collie, 15 Corfu, 16 Expel

Across

1. Covered passage where we raced; a curious place for amusements (6)
4. Slough mostly joined Switzerland to reveal lazy person (6)
9. Northern mother flying with British Airways discovers a snake (5)
10. Incumbent is just one of six cars (5)
11. Graph I'd use to locate bug (5)
12. Noting time needed on high land for carnival (7,4)
15. American uncle and fellow performed a latin dance together (5)
17. I'd one, then nothing and then a thousand, but don't take it literally (5)
18. We met to sort out an emblem (5)
19. To have something to get in with would be a good start (6)
20. Being sharp, I appear twice in both sorts of current (6)

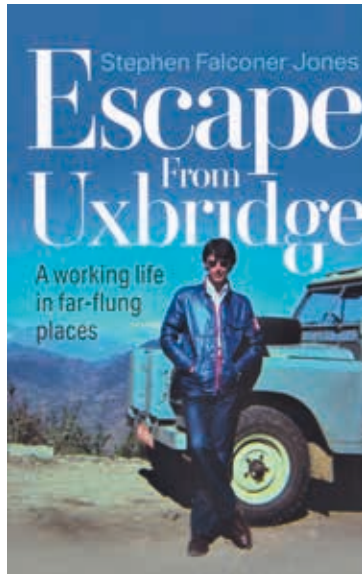
Down

1. I dream of having someone to look up to (6)
2. Despicably, I move cream Tom put out in honour (13)
3. Don't make a big fuss about a small drink (5)
5. Furious when seven turn up in empty load (5)
6. Duct policeman hid in to keep it simple (13)
7. Another ballerina hiding this type of remedy (6)
8. A spell is cast and then men can't move (11)
13. Type of cat being the colour of unbleached cotton (6)
14. And, from a single particle, I see type of kitten from the nineties (6)
15. Some thousand in France, but millions were killed here (5)
16. Employing tact, I arrange to be at the top of the house (5)

Escape From Uxbridge

What did you do in lockdown? As an alternative to DIY, which he detests, Steve Jones of Ball Hill decided to finish writing the book about his working life that he had begun many years before. The long hours of lockdown provided the ideal opportunity to focus on the task and to “dust off” and digitise old slides and photos, some of which appear in the book.

As a schoolboy in Uxbridge, he had dreamed of visiting far-away places and the first step of realising those aspirations was taking a job as a teacher in Zambia in 1969. This opened his eyes to life beyond West London and fed a wanderlust that would never leave him. He went on to spend the best part of 30 years, in the 70s, 80s and 90s, working on overseas projects, mostly in developing countries. This afforded him the opportunity to learn about the fascinating people, cultures, politics, agriculture and much more of these far-flung places, while seeking viable development schemes funded by international aid agencies. This book is an enlightening and entertaining account of his adventures in more than 70 countries, from Nigeria to Nepal and from Afghanistan to Chile, Pakistan and Russia.



Escape From Uxbridge is published by Mereo Books (www.mereobooks.com) in August 2021 and available from Amazon and other internet booksellers.



FOOT HEALTH CARE

by **PAULA CARTER** Dip CFHP, MPSPract
HOW CAN I HELP YOUR FEET?

I'm a fully qualified, accredited and insured foot health practitioner. General foot care and routine problems relieved quickly and painlessly in the comfort of your own home.

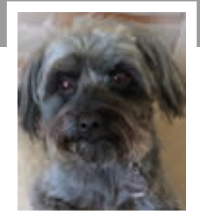
- Nail cutting & filing
- Fungal or thickened nails
- Ingrown nails
- Painful corns removed
- Cracked & dry heels
- Verrucae
- Athletes foot
- Callus reduction
- Diabetic care
- Plantar faciitis & heel pain



Call or text 0790 1822 125



Burt's Blog

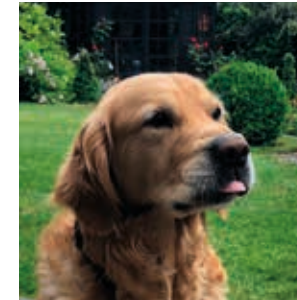


Hello again. What a time I have had the last month, lots more walking and meeting so many people who make a fuss of me. I also paid a visit to the Plant and Cake sale at St Thomas' Church. That was good fun, so many different people. I really wanted to try the cakes but I was told they are not good for me; I think I should be the judge of that! Something else to add to my list of things done in the last month is a visit to the vet for my booster jab. No fun at all because the vet has to stick a needle in me. Horrid!

But best of all, I have made new doggie friends in Woolton Hill, namely



Billy,
and I hope to make many more throughout the summer.

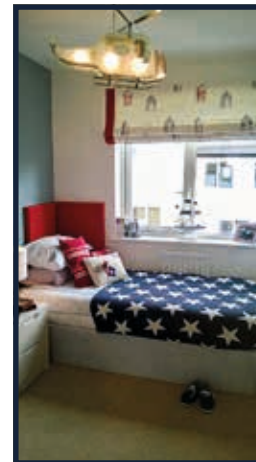


Henry
See you around.



and Poppy,

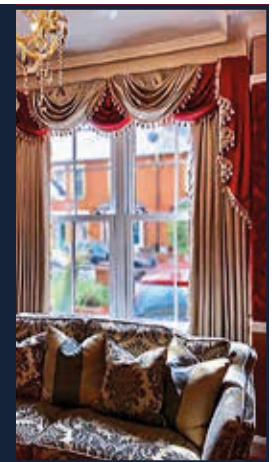
Burt



Sharon Stretton Designs Bespoke Soft Furnishings & Interior Design

- Curtains & Blinds
- Tracks & Poles
- Upholstery
- Mood Boards
- Fabrics & Trimmings
- Cushions & Headboards
- Bed Valances & Throws
- Fitting Service

Showroom:
Unit 5 New Mills Industrial Estate,
Post Office Road, Inkpen, Hungerford,
Berkshire, RG17 9PU
Tel: 01488 669267



Directory of Local Organizations

24hr Emergency Numbers

Thames Water 0845 9200 888
Southern Water (water supply) 01273 606766
Southern Electric 105 or 08000727282

Age Concern Hampshire Village Agent Sarah 07806 659449

Arbor Flora Group . . Secretary: Ros Oles 01256 896014

Basingstoke & Deane Borough Council 01256 844844

member: *Graham Falconer* (*cllr.graham.falconer@basingstoke.gov.uk*) 253144

Churches

East Woodhay, St Martin's www.stmartins.church

Churchwardens . . Richard Twallin 253354. . Andrew Colville 254017

W'lton Hill, St Thomas' www.wooltonhill.com/community/church/church.html

Churchwardens . . Chris Vane 253707 Bridget Wheeler 250729

Defibrillators

There are 4 public access defibrillators in the Parish, WH Church Hall, EW Village Hall, the Rampant Cat, and WH Junior School.

Doctors' Surgery Woolton Hill 253324

Patient Participation: Rosemary Cahill 253306

Ducklings Fiona Morgan 42080

East Woodhay & Highclere Neighbourcare Volunteer Driving

Enquiries/Volunteers-www.ewhneighbourcare.org.uk Keith Nunn. . . . 253888

To collect your prescription or help collecting shopping call . . 01635 745600

East Woodhay Charities Secretary: Susan Wren 254875

East Woodhay Cricket Club Contact Adrian Batchelor . 07810 647618

East Woodhay Flower & Produce Show 254114

www.eastwoodhayflowershow.co.uk

East Woodhay Football Club Chairman: Alan Jones 254024

East Woodhay Local History Society Sec: Christine Dalton . . 07880 628 114

East Woodhay Parish Council Members: www.eastwoodhay-pc.gov.uk

James Mitchell (Ch) james.mitchell@eastwoodhay-pc.gov.uk . 01635 254747

Susan Cooper . . . susan.cooper@eastwoodhay-pc.gov.uk . 01635 254149

Graham Dick . . . graham.dick@eastwoodhay-pc.gov.uk . . 01635 255372

Martin Hainge . . . martin.hainge@eastwoodhay-pc.gov.uk . 01635 255793

John Heritage . . . john.heritage@eastwoodhay-pc.gov.uk . . 01635 628757

Paul Hurst (V.Ch) . paul.hurst@eastwoodhay-pc.gov.uk . . . 01635 254363

Phil Jarvis philip.jarvis@eastwoodhay-pc.gov.uk . . . 01635 254422

Mark Rand mark.rand@eastwoodhay-pc.gov.uk . . . 01635 250898

Directory of Local Organizations

East Woodhay Parish Council continued

Karen Titcomb . . karen.titcomb@eastwoodhay-pc.gov.uk . . 07974 011065

Andrew Watson . . andrew.watson@eastwoodhay-pc.gov.uk

Amy White (Clerk) clerk@eastwoodhay-pc.gov.uk 07855 275336

East Woodhay Village Hall Carol Stanley 01635 35859

. eastwoodvillhall@gmail.com

East Woodhay Short Mat Bowls Club Contact: Cathy Neller. 255589

East Woodhay Silver Band Contact: Rosemary Gittins 07917 522180

East Woodhay Society Chairman, Mark Rand 250898

eastwoodhaysociety@gmail.com www.wooltonhill/ews

East Woodhay Twinning Association Helen Allen, Secretary . . 01635 250776

East Woodhay W.I. . Secretary: Pat Gibbs 07831 669 220

Hampshire County Council Member: Tom Thacker . . 01962 771863

Highclere Film Club Secretary: Chris Martin 253461

Highclere Evergreens Leader: Mrs. V. Burge 864584

Litter warden litterwarden@eastwoodhay-pc.gov.uk

MP - Kit Malthouse 01264 401401

kit.malthouse.mp@parliament.uk 2 Church Close, Andover, SP10 1DP

National Women's Register Val Burfield 255168

Neighbourhood Watch

Woolton Hill vacant.

North End Jack Castle. 253537

Newbury Chamber Choir info@newburychamberchoir.co.uk

Nwby. Wkly. News WH Correspondent Nicole Bentham. . . . 255582

Police Hampshire Constabulary (Position to be filled) 101

The Samaritans Freephone 116 123

Schools

The Clere 278372

The Clere Community Office 278129

St Martin's East Woodhay CE Primary www.st-martins.hants.sch.uk 597796

St Thomas', Woolton Hill, Infants . . www.stthomasinfant.co.uk 253431

Woolton Hill Juniors www.wooltonhilljunior.co.uk 253364

Spectrum www.wooltonhill.com/Spectrum.html

Chairman Bob King 253378

Treasurer Gill Burrows 254301

more over

Directory of Local Organizations

Spectrum continued

- Distribution Chris Vane 253707
 Advertising Michael Robinson 253004
 Editors:
 Abbie Dando SpectrumEditorAbbie@gmail.com 07477 987943
 Mary Gulliver mary@TheGullivers.co.uk 254567
 Kathy Scott (6pm-9pm) spectrumwh@outlook.com 254756
 Jim Hannington seamusman3@gmail.com 07895637611
St Martin's Guild . . Secretary: Sarah Leventhorpe 255293
 info@eastwoodhayfete.org.uk www.eastwoodhayfete.org.uk
St Thomas' Handbell RingersNicole Bentham. 255582
Woolton Hill & District Gardeners' Club Nick Harcourt 253546
Woolton Hill Argyle Football Club. . . Jon Dennis money.whafc@gmail.com
Woolton Hill Brownies contact Maggie Russell - 2whbrownies@gmail.com
Woolton Hill Church Hall. 253546
 Nick Harcourt, Charnwood Cottage, Broadlayings
 wooltonhillhallbookings@gmail.com.07971 064087
Woolton Hill Pre-SchoolNicola Logan 254721
Woolton Hill Sports Club (tennis, table tennis) Alison Whitehorn 254391
Woolton Hill Village MarketClaire and Sally
 www.whvm.co whvmarket@gmail.com
Woolton Hill Website.Contact: Mark Rand 250898
 www.WooltonHill.com eastwoodhaysociety@gmail.com

Spectrum Advert Rates

(with effect from April 2021)

Annual rates—please contact Michael Robinson Tel 253004

For ALL fund-raising events (charity, political, etc)
 £3 per quarter page b&w, £5 colour

For all commercial and professional advertisements
 £25 (colour) per quarter page

Invoices are issued once the publication has been sent to print.
Please note that advertisements may be altered in size to fit the space available.

Guidance to advertisers: www.wooltonhill.com/spectrum-guidance
 Subscription: £5 per annum

BALL HILL GARAGE

Car Servicing & Repairs

Air Con Servicing & Repairs, Advanced Engine Diagnostics
 Batteries, Exhausts, Welding, Tyres including Advanced Four Wheel Alignment
 Hybrid & Electric Vehicles, Servicing & Repairs
 Horsebox Trailer Service & Repairs

*Courtesy cars available, manual and automatic. Free local collection and delivery service.
 Ball Hill Garage Technicians are fully qualified and regularly attend motor trade approved training courses*



Tel 01635 253282
enquiries@ballhillgarage.co.uk



Liberty Garden Buildings



**GREENHOUSES
 HOME OFFICES
 GARDEN ROOMS
 ROTATING PODS
 SUMMERHOUSES
 GARDEN SHEDS**

www.libertygardenbuildings.com

Yew Tree Garden Centre, **01635 255533**
 Ball Hill, Newbury RG20 ONG



CONTROL SERVICES
 Pest Management & Timber Care

Wasps · Hornets · Rats · Mice · Moles
 Woodworm · Ants · Fleas · Flies · Moths
 Bed Bugs · Beetles · Cockroaches

Domestic and Commercial

www.pestcontrolberkshire.com

01635 250 852



MARSH fuels



Heating Oil now available to collect in 20 litre drums

01635 253 253
www.marshfuels.co.uk

H C Marsh (Newbury) Ltd, Ball Hill, Newbury, Berkshire. RG20 0PW

Esseborne Manor Hotel & Restaurant

Family run business offering a warm welcome and the best food in the area.

Daily lunches with canapes & wine

A la carte dinners

7-course tasting dinners

Sunday lunches

Vintage afternoon teas



Perfect for private functions & weddings

Hurstbourne Tarrant SP11 0ER,
www.esseborne-manor.co.uk, 01264 736 444