

October 2019

50p

# *Spectrum*





greentips

TREE SURGERY

YOUR LOCAL TREE CARE SPECIALIST

- Fully Qualified and Insured
- Tree Surgery
- Planting•Pruning•Removals
- Hedge Cutting
- Stump Grinding
- Woodland Management
- Chip, Mulch & Logs for Sale

T: 01635 254712

M: 07903 259973

[www.greentipsuk.com](http://www.greentipsuk.com)

## Editorial

Welcome to your October edition of Spectrum magazine. We have a very full issue this month with very welcome reports on both the village and the church halls. Both have received substantial facelifts making for much improved facilities for us all to enjoy.

Every year I wonder if enough material will arrive on my computer to fill another issue, and I'm never disappointed! Thank you to everyone who contributes whether it is jokes, reports, articles, letters or adverts. This is your magazine after all and without them it wouldn't be very much of a community magazine. Even though there may be occasions when something has to wait a month (or two!) before finding its place, I do encourage you to keep sending them in.

Thanks for reading and I hope you may think of something interesting to send to me for the coming months!

Kathy



## Spectrum

<http://www.wooltonhill.com/Spectrum.html>

Spectrum is a monthly community magazine serving East Woodhay and Woolton Hill. It is run by a committee of volunteers and is a not for profit publication.

Reports on village activities and articles of local interest are welcomed for publication subject to the discretion of the editor. Copy should reach the editor by the seventh day of the month preceding publication and should be a maximum of 500 words. In the event of pressure for space, the editor reserves the right to reduce the length of the article while attempting to maintain the style of the writer and retaining as much content as possible.

The editorial committee accepts no responsibility for the views expressed by Spectrum contributors or for the quality of goods and services provided by advertisers in this magazine.

**The contents of this magazine are protected by copyright and nothing may be reprinted without prior permission.**

**Editor for November and December 2019**

Kathy Scott

'Bowood' Gore End Road, Ball Hill, RG20 0PG

Phone: 01635 254756 (only between 6-9pm) Email: [spectrumwh@outlook.com](mailto:spectrumwh@outlook.com)

Cover: Dahlias at this year's Flower and Produce Show. Photo Kim Boreham

RosieCutbill  
photography

Children, Families  
& Weddings

T: 01672 540520  
E: [info@RosieCutbillPhotography.co.uk](mailto:info@RosieCutbillPhotography.co.uk)  
W: [www.RosieCutbillPhotography.co.uk](http://www.RosieCutbillPhotography.co.uk)

# R. D. RUTTERFORD

## OIL FIRED BOILER MAINTENANCE

MEADOW VIEW  
BROAD LAYINGS  
WOOLTON HILL  
NEWBURY  
BERKSHIRE RG20 9TS

01635 253257  
Mobile: 07771 610145



## A D CARPENTRY & BUILDING

- **Joinery**
- **Built-in storage**
- **Doors and windows**
- **First and second fix**
- **Rotten wood**
- **Refurbishments**

Free estimates, competitive prices -  
call Andrew **07979 455903**

*Thyme*  
The food you would have cooked

- ✦ Can I help you fill your fridge or freezer?
- ✦ Freshly made, nutritious food for busy people.
- ✦ Menu of main dishes and puddings to suit an informal supper with family or friends.
- ✦ Menus also available for dinner parties, family or special celebrations.
- ✦ All dishes made to order and delivered locally.

### Rhona Everard

Mob: 077969 46664  
Email: [thymehomecook@gmail.com](mailto:thymehomecook@gmail.com)  
Web: [www.facebook.com/thymehomecook](http://www.facebook.com/thymehomecook)



## Real Me Yoga

### Hatha Yoga

Highclere Village Hall: Tues & Wed pm/evening  
Ashmansworth Village Hall: Wed 9am

Fun, friendly & accessible standing or seated classes for mobility, stamina & balance. Relaxation workshops.

Contact Joanna Edge 07970 166675  
[hello@RealMeYoga.co.uk](mailto:hello@RealMeYoga.co.uk)  
[www.RealMeYoga.co.uk](http://www.RealMeYoga.co.uk)



## Diary of Events October 2019

Wednesday	2 <sup>nd</sup>	EW Short Mat Bowls	EWVH	7.30pm
Wednesday	2 <sup>nd</sup>	NWR		8pm
Thursday	3 <sup>rd</sup>	St Martin's Kneeler Group	The Grove, North End	10.30am
Friday	4 <sup>th</sup>	Walk for Health	from WHCH	10.30am
Friday	4 <sup>th</sup>	Community Café	St Thomas Church	9-11am
Monday	7 <sup>th</sup>	Evergreens	HVH	2 - 4.15pm
Tuesday	8 <sup>th</sup>	EW WI - Members Meeting	EWVH	2.30pm
Wednesday	9 <sup>th</sup>	EW Short Mat Bowls	EWVH	7.30pm
Friday	11 <sup>th</sup>	Walking for Health	The Rampant Cat	10.30am
Friday	11 <sup>th</sup>	Community Café	St Thomas Church	9-11am
Monday	14 <sup>th</sup>	EW Local History - Jonathan Sayers:Greenham Common	EWVH	8pm
Tuesday	15 <sup>th</sup>	Arbor Flora	HVH	2.00pm
Wednesday	16 <sup>th</sup>	EW Short Mat Bowls	EWVH	7.30pm
Wednesday	16 <sup>th</sup>	NWR		8pm
Friday	18 <sup>th</sup>	Walking for Health	WHCH	10.30am
Friday	18 <sup>th</sup>	Community Café	St Thomas Church	9-11am
Wednesday	23 <sup>rd</sup>	EW Short Mat Bowls	EWVH	7.30pm
Thursday	24 <sup>th</sup>	WH & District Gard'ng Club	WHCH	7.45pm
Friday	25 <sup>th</sup>	Walking for Health	The Rampant Cat	10.30am
Friday	25 <sup>th</sup>	Community Café	St Thomas Church	9-11am
Monday	28 <sup>th</sup>	EW Parish Council	EWVH	7.30pm
Wednesday	30 <sup>th</sup>	EW Short Mat Bowls	EWVH	7.30pm
<b>November</b>				
Friday	1 <sup>st</sup>	Walking for Health	WHCH	10.30am
Friday	1 <sup>st</sup>	Community Café	St Thomas' Church	9-11am
Monday	4 <sup>th</sup>	Evergreens	HVH	2 - 4.15pm
Wednesday	6 <sup>th</sup>	EW Short Mat Bowls	EWVH	7.30pm
Wednesday	6 <sup>th</sup>	NWR		8pm
Thursday	7 <sup>th</sup>	St Martin's Kneeler Group	St Martin's Schl, East End	10.30am
Friday	8 <sup>th</sup>	Walking for Health	The Rampant Cat	10.30am
Friday	8 <sup>th</sup>	Community Café	St Thomas' Church	9-11am



**Alfresco**  
**ALFRESCO MARQUEE HIRE**  
 Phone: 07470 484816 Web: [www.alfrescomarqueehire.co.uk](http://www.alfrescomarqueehire.co.uk) Email: [info@alfrescomarqueehire.co.uk](mailto:info@alfrescomarqueehire.co.uk)  
 Garden Parties, Wedding, Christenings, Fetes, BBQs, Corporate Events

- Stunning & versatile cover for all occasions.
- Lighting, Matting, Heaters, Dance floor & Pallet Bar available to complement
- Suitable for events from 20—200+ people
- Alfresco also offer a Hog Roast - including Baps, Apple Sauce, Stuffing & Chef to carve



[www.facebook.com/alfrescomarquees](https://www.facebook.com/alfrescomarquees)

**VIC KJG** | **K.Church**  
 m. 07810 033 940  
 t. (01635) 278557

**Plumbing & Heating**

**Oil Boilers Installed & Commissioned**

Central Heating Systems  
 Hot Water Cylinders  
 General Plumbing



**Yvonne Arnott**  
 INTERIORS

**INTERIOR DESIGN**  
 For  
**RESIDENTIAL PROJECTS**

From a single room to a whole house our new service aims to create with you an interior that you love to be in.

Including interior design, soft furnishings, spacial planning, home staging and fabric sourcing.

07799 820 582  
[yarnott@talk21.com](mailto:yarnott@talk21.com)  
 29 Lawrence Mead, Kintbury RG17 9XT

**TT Garden Care**  
**Private & Commercial Maintenance**  
 Hedge Cutting - Lawn Care - Fencing - Small Tree Work  
 Turfing - Weed Control (NPTC Qualified)  
 Free estimates on request

Trevor Thomas  
 T : 07949 995658  
 01635 865604  
 E : [tt4gardencare@btinternet.com](mailto:tt4gardencare@btinternet.com)

## Sandham Chapel October Events

If you want to book tickets or have any questions please call the contact number: 01635 278394 or contact email or website: [www.nationaltrust.org.uk/sandham-memorial-chapel](http://www.nationaltrust.org.uk/sandham-memorial-chapel)

**Monthly Service** Date: 2<sup>nd</sup> October Time: 10:15-10:50 Cost: Free  
 Join us for one of our monthly Services conducted by our Parish Rector. There is no need to book, but as the chapel is quite small space may be limited.

**Papercraft Workshop** Date: 11<sup>th</sup> October Time: 10:45-12:45 Cost: £17  
 Working with local artist Helen Mortimer learn about this varied artistic medium to create your own unique projects. Paper is very versatile and can be folded, cut, glued or layered. Learn how to create beautiful cards and 3D projects from a range of colourful papers and cards using techniques including stamping, die cutting and embossing

**In the footsteps of Stanley Spencer; exhibition by Jen Gash—Sky Landscape Artist of the Year 2018** Date: 16<sup>th</sup>-27<sup>th</sup> October Wednesdays-Sundays Time: 11:00-16:00 Cost: Free

Jen's prize was a commission from the Imperial War Museum to create a painting of the Kosturino Ridge in Macedonia; the site of a significant battle in December 1915. Jen travelled to Macedonia in the autumn of 2018 and her finished painting is hanging in the Imperial War Museum, North. Jen created many other pieces of work as part of her trip and this unique exhibition provides new "eyes" into the landscape of Macedonia, old and new, as she followed in the footsteps of Stanley Spencer.

**Stanley Spencer's Salonika** Date: 19<sup>th</sup> October Time: 16:15-17:45 Cost: Free  
 Jen Gash, Sky Landscape of Artist of the Year 2018, talks about her experiences working on the commission to produce a piece of artwork based on the Macedonian landscape, which now hangs in the Imperial War Museum, North.

**nailpad**  
 perfect your polish

Nail polish spills? Difficulty holding your nail polish? **Then try Nailpad - your manicure & pedicure accessory.**

- Bottle holder avoids spills
- Flat, stable surface
- Portable, handbag size

**£12.95 for your black or pink Nailpad. FREE UK postage**

[nailpad.co.uk](http://nailpad.co.uk) | [info@nailpad.co.uk](mailto:info@nailpad.co.uk) | 01635 255 793





## Woolton Hill Update On Church Hall Improvements

All Users attending the Hall from 1 September 2019 will have been amazed to see the superb changes that have taken place so far. On entry to the new Car Park, you will find a new and spacious area for parking. All people using pushchairs or in wheelchairs will find access from the car to the Hall smooth and safe.

The Chestnut Tree was found to be very rotten on the inside, and the Tree Surgeon was surprised that the thin shell around the dead inside was strong enough to keep it upright and safe. With the removal of the tree, the light that this gives for both the School and the Hall is tremendous. The area around the base of the tree has been removed and levelled and a smart retaining wall finishes off the area around the Electricity Sub-Station. A much improved entrance to the Hall. Security



cameras have been installed and a new faster router has been introduced for the benefit of all Users. Please check on the new password. A new loft ladder will have been installed in September, along with a new Play Area surface being planned.

Many thanks go to Basingstoke and Deane, and East Woodhay Parish

Council for considering and supporting, both financially and administratively, this project which was planned by the Hall Committee and masterminded by John Angle. As Chair I would

like to thank all those involved, who are too many to mention here individually. Finally I would like to add that there are additional plans to re-surface the Play area to improve, make the area safer, and make it look user friendly.

Nick

***louise benson*** mobile hairdresser

01635 38041 ANY TIME

*quality hairdressing with a personal service*

**LAMD**

*Martin C. Mackrill*



INTERIOR & EXTERIOR DECORATORS  
LINCRUSTA SPECIALIST



Mobile: 07836 228317

email: martinmackrill.deco@gmail.com

as seen on I.T.V's "London's Burning"

as seen in Homes and Gardens 2016

## Wonders with Wood

### Hardy's Custom-Made Carpentry & Joinery

Chris Hardy  
Bruan Road  
Newbury

07872124367  
chris.hardy72@gmail.com



## Malcolm Morrisen

*Specialist in all types of Furniture  
Restoration and Conservation*

Tel: 01635 281349 / 07990 880717

morrisonrestoration.co.uk

malcolm.morrison@btinternet.com





Highclere Osteopathy

**Sara Winchcombe Registered Osteopath**

Neck, back, any joint pain and sports injuries

**07748 185 713**

sara@highclereosteopathy.co.uk

www.highclereosteopathy.co.uk



Your local renewable energy specialist

**Is your Air Source Heat Pump due a service?**

We repair and service Mitsubishi Ecodan Heat Pumps, as well as solar PV systems and Thermaflow boilers.

Contact Paul Gibbons on 07791 364408 or visit [www.greenwiresolar.co.uk](http://www.greenwiresolar.co.uk)



Greenwire Solar, October Cottage, Broadlayings, Woolton Hill, Newbury RG20 9TT

**Woolton Hill Preschool**

[www.wooltonhillpreschool.org.uk](http://www.wooltonhillpreschool.org.uk)

The Church Hall, Woolton Hill, Newbury

30 years of experience, Achieved 'Good' in 2016 Ofsted report

Secure, fun & caring environment

Friendly, loyal & Qualified staff

Strong curriculum based learning through play

French, Debutots & Talking tots at no extra cost!

Places for ages 2-5, government grant available

Breakfast club available for all children up to age 8

The staff walk the children to the Junior and Infants school

Flexible term-time hours. Mon-Thurs 8am-3pm Fri 8am- 12.30pm

Contact on: 01635 254721 Or email at: [hello@wooltonhillpreschool.org.uk](mailto:hello@wooltonhillpreschool.org.uk)



TAPESTRY ONLINE TRAINING JOURNAL



# East Woodhay Parish Council



## EWPC News.

Since this article, (and indeed all articles in Spectrum) is written about one month before publication there is nothing to report arising from Parish Council meetings since there have been none in August. This does not mean the PC has been inactive however, merely that we have not all met in full session.

Hedges: Some progress has been made with the cutting of hedges which intrude on the footpaths but there remains more to do. Residents are reminded that this is not an option but a legal duty not to impede the pavement area. In extreme cases it may be necessary for the PC to arrange the cutting and the cost will be billed to the owner concerned.

## Refuse.

Many of us have a change to our refuse collection days but the new system seems to be working well. It just seems to take more effort to remember the night you have to put the bins out. Probably due to my advancing years!

## Woolton Hill Recreation Ground CCTV Upgrade

As work was taking place to install new CCTV in the Church Hall, the PC decided to take advantage of this and upgrade the CCTV for the Recreation Ground. We have now linked the Recreation Ground CCTV to the new technology being used for the Church Hall CCTV enabling new functionality to be used. In the past the Recreation Ground CCTV could only be accessed by a linked computer in the infant school. This meant if incidents were reported it took time to access the required playback, resulting in delays in getting key information to the police. The new new technology allows immediate access by a mobile

device (of course with strict security) enabling a rapid response to any reported incidents. This will enhance the security of people and equipment in the Recreation Ground.

## Update from Paul Hurst. Meadowbrook Community Land

In the July Spectrum I highlighted our disappointment at the lack of progress of the sign off of the Meadowbrook development, resulting in no movement in the handover of the Community Land to the Parish. In August there was a further inspection of the site by the BDBC landscape officer and a review with some of the residents to get their feedback. Unfortunately again Bloor Homes had not completed the remedial planting to specification. As the landscape officer felt the next review would have to be in March (after replanting in Autumn) we agreed the handover of the Community Land could not keep being pushed back. Bloor Homes and BDBC have therefore accepted to decouple the handover of the land with the final sign off of the site. All parties have agreed we will now move forward with the legal process to handover the land. BDBC have commenced the negotiation with the first step being the legal agreement of the area of land to be transferred. It is hoped handover of the Community Land will be completed early in the new year.

Refurbishment of both the East Woodhay Village Hall and the Woolton Hill Church Hall will be covered by separate reports from the project managers elsewhere in Spectrum.

Phil Jarvis

## Pressurized hot water system?

Megaflo, Ozo, Ariston, Dimplex, Heatrae-Sadia, Tribune, Santon, Gledhill etc  
All manufacturers recommend these systems are serviced regularly by qualified specialists

To book your service and ensure good safety and efficiency contact your local expert



## Kevin Pearson Total Pressure Ltd.

*New installation a speciality.*

07971 250799 01635 253975 totalpressurelimited@aol.com

## Redlands Property Services Ltd

*Specialist in All Aspects of Oil Fired Heating and Plumbing*

New Boiler Installations, Servicing, Breakdowns, Oil Tank Replacements  
Underfloor Heating, Mains Pressure Hot Water Cylinders Installations

All Work Guaranteed/Free Quotes

*Please call : James Mead*

OFTEC Registered Company C8170

Tel 01189 810 310 / 01635 282 172 Mob 07795 063 067  
www.rpsllp.co.uk email boilersupport@rpsllp.co.uk



## PAUL S. WALDEN Painter & Decorator

**For all your painting and decorating requirements**



City & Guilds Qualified  
Interior & Exterior  
25 years' experience  
all work guaranteed

Tel no.: 07802 578934

## OVEN SOLUTIONS

*Put That Sparkle Back Into Your Oven*

- ✦ Full non-caustic deep clean
- ✦ Cleans ovens, hobs, extractors & barbecues
- ✦ Replacement filters, seals, bulbs & elements
- ✦ Non-franchise established 14 years
- ✦ Child, pet & eco friendly



see our reviews  
on yell.com

**Peter Hudson 07733 253 563 Oven-Solutions.co.uk**

THE HIGHCLERE  
**RED**  
HOUSE



## TAKEAWAY PIZZA

Tuesday to Friday: 5–10pm

Saturday: 12–10pm

**01635 255 531**

www.thehighclereredhouse.com

**LOGS, COAL, AND  
KINDLING**  
ring Richard 07990 585527

## Home and Property Maintenance and Repairs

- Internal and External decorating
- Kitchen and Bathroom fitting and tiling
- General building work
- Fencing, decking and patios
- No job too small



*Because everyone's home is their castle*

**Local professional family run business**

Call for free quotation on 07812 135045 or email: [highclerehandyman@gmail.com](mailto:highclerehandyman@gmail.com)



## Quality Plant Specialist

Spacious café serving delicious home-made food  
Stunning range of plants, trees and shrubs  
Pet foods and accessories  
Landscaping and design service



### YEW TREE GARDEN CENTRE

Ball Hill, Newbury, RG20 0NG - 01635 255250  
Opening times: Mon - Sat: 9am-5.30pm, Sun: 10.30am-4.30pm  
[www.yewtreegc.co.uk](http://www.yewtreegc.co.uk)

## RJ Lampard & Company Ltd

*A family run business Est 1976*



- **Specialist Drainage & Ditching Works**
- **Road Repairs and Road Construction**
- **Civil Engineering Works - Concreting etc**
- **Own fleet of plant and machinery**
- **Fully qualified and experienced operatives**

*For further information please call:-*

**01635 253137 / 07768 201370 or email: [rj@rjlampard.co.uk](mailto:rj@rjlampard.co.uk)**

## Letter to the Editor

Pheasant Cottage, Ashmansworth

Dear friends

'Caring for Creation'

I am writing this at the conclusion of the cycle of sermons during August on 'Caring for Creation'. We have looked for ways we might respond to the crises affecting the planet, climate change, pollution, plastic waste, water shortages and the other troubles of which we are all now so aware.

Everyone can appreciate the beauty around us and we all have an interest in helping to protect and enhance the world. We have waited in vain for governments to respond to the urgent threats to the planet, maybe it is now time for people to show decision makers, and each other, how greatly we care – not least for the sake of our children and grandchildren. There are many dangers to our world but if we respond positively, treating environmental concerns not as dangers to be feared but as opportunities for individual action then there is hope for a better future.

Here are some ideas which many people could take up and share with their friends and neighbours to spread a message of care for the wider world and beginning changes for the benefit of everyone:

Using cars less – for example by car sharing for shopping trips etc.

Reducing waste – reusing and repairing instead of throwing away

Minimising our use of plastics

Thinking twice before booking flights to reduce carbon emissions

I think it is so important for us to make changes in our lifestyles alongside our friends and neighbours, sharing our hopes for the planet and convincing decision makers and businesses that people are prepared to make sacrifices now for the benefit of future generations.

A prayer:

Creator of our common home, you fill the earth and sea and sky with life, forgive us our neglect of your creation, the choking waste of our pollution, the damage done by careless habits and our indifference to future generations. Inspire us to amend our lives, to refuse more plastic if we can't reuse it and to lift our voices for lasting change, living well and gently on the earth. Amen.

Every Blessing, Mike Sarson  
(Licensed Lay Minister)

### BED & BREAKFAST

Two spacious rooms, one double and one twin, with own bath/shower room in a private period house in Woolton Hill, 5 miles south of Newbury. No smoking.

Price: £55 per room per night

Contact: Mrs Bridget Wheeler: 01635 250729 or 07812 240210





**OUR SURGERIES:**

Burlins Surgery, Burlins,  
East Woodhay, Newbury,  
Berkshire, RG20 0NU.

Foxhold House Surgery,  
Crookham Common,  
Thatcham,  
Berkshire, RG19 8EL



We can help you meet all your pet and equine healthcare needs, with professional and caring staff who can treat your animal at a time that suits you. Out vets offer an emergency service giving you 24 hour reassurance.

*...we're here to listen*

**24 hour phonenumber: 01635 254544**

**www.coachhousevets.com**

**Light & Day Electrics**

Part-P & 17<sup>th</sup> Edition qualified

- New installations
- New circuits
- Rewire
- Consumer unit replacement
- Extend Circuits
- Lighting
- Garages
- Outside Buildings
- Smoke alarms
- Fault Finding

For all your electrical needs & Free estimate

Phone Jeremy

01635 278 485  
07885 985 275



the  
**Alexander  
Technique**

- Relieve back & neck pain
- Enhance health & well-being
- Improve posture & stamina

*for lessons and courses:*

Judith Turner MSTAT

01635 253981

07771 896696

judeturner7@gmail.com

www.jt-alexandertechnique.co.uk

**ANTONIA EDWARDS**

**UPHOLSTERY**

Re-Cover and Re-Upholstery work undertaken  
with both modern and traditional materials.

+44 (0)7779 02 01 43

WWW.ANTONIAEDWARDSUPHOLSTERY.COM



**CHATELAINE**  
WONDERFULLY DRESSED WINDOWS

CURTAINS | CUSHIONS | BLINDS |  
UPHOLSTERY | THROWS |  
LAMP SHADES | BED VALANCES |  
SHEERS | PELMETS | POLES |  
TRACKS AND HARDWARE

www.chatelaineinteriors.co.uk  
info@chatelaineinteriors.co.uk

T: 07515 420 929

**WESTRIDGE STUDIO ARTS COMPETITION**

**REMINDER**

**Closing date for entries is 18th October 2019!**

The Westridge Trust would like to produce a range of postcards and thank you notes using local artwork

To enter please send photos of your original work:  
paintings, sculpture, ceramic or needlework  
to: westridgestudiomarketing@gmail.com

**All proceeds from the sale of cards will go towards the refurbishment of the Westridge Studio, Highclere**

*The Westridge Trust is a Registered Charity No: 1169481*



Building & Construction

- Loft Conversions
- Extensions
- Kitchens
- Bathrooms
- Refurbishments
- Patios
- Double glazing

Small selection of building work we undertake

For all your building projects and free estimate

Call Jeremy

01635 278 485  
07885 985 275

[www.watermill-sounds.co.uk](http://www.watermill-sounds.co.uk)



Professional Dog Grooming

**Patient and Caring Service for  
all Breeds**

- Clipping, Hand Stripping,
- Scissoring, De-matting,
- Bathing, Nail & Ear Care



**Alison Sutton 07706645773**  
[barkingboutique@yahoo.co.uk](mailto:barkingboutique@yahoo.co.uk)

Windfield House, Byeways, Highclere,  
Newbury, Berkshire RG20 9PA

## Shape up your week and keep fit!

### Monday - Hone 'N Tone

Gentle Aerobics for the Less Frantic!  
(suits any age)  
At 6.45 - 7.30pm - Just £4.50

### Monday - Simple Circuit

Suitable for all levels  
At 7.45 - 8.45pm - Just £5.00

### Tuesday - Beginners Step

Learn the easy way to step.  
Tone up the muscles while having fun  
At 7.30 - 8.30pm - Just £5.00

### Thursday - Tums, Bums and Thighs

'Get rid of the enemy'  
At 7.30 - 8.30pm - Just £5.00

**All classes held at Burghclere Village Hall**  
**Fully qualified instructor - Sally**  
**Contact on 01635 278680**



# Aardvark

PROFESSIONAL OVEN AND  
CARPET CLEANING SERVICES

[AARDVARKOVENCLEANING.COM](http://AARDVARKOVENCLEANING.COM)  
[AARDVARKCARPET-CLEANING.COM](http://AARDVARKCARPET-CLEANING.COM)

07783 810806

## Eco Bricks

–how to make them and where to take them.



Currently the local collections for Eco Bricks are being used to build playground equipment in local schools.

Many people have asked how can they use their non-recyclable single use plastic to make an Eco Brick and where do to take it once complete. So here is some helpful information to get you started!

### Technique

Clean and dry your plastic and bottles. Cut the plastic into small pieces: soft plastic (crisp packets etc) approx 4cm square, hard plastic (yoghurt pots etc) approx 1cm square. Use a dowel or spoon handle longer than the length of the bottle to cram in the plastic right into the bottom of the bottle. For best results you can alternate layers of soft and hard plastic.

This way you get enough in to achieve the minimum required weights for each bottle size:

- 500 ml – 167g
- 1 litre – 333g
- 1.5 litre – 500g
- 2 litre – 666g

Once full simply put the screw top lid on.

### Where to Take your Eco-Bricks

Information about where to take them can be found on [www.ecobricks.org](http://www.ecobricks.org) web site.

There are also projects locally using Eco Bricks for school playground furniture and you can take them directly to Hampstead Norreys Community Shop & Cafe or drop them off at the following places:

Hungerford Garden Machinery, Unit 8-9 Charnham Lane, Hungerford, RG17 0EY. 01488 684105 Mon-Fri: 8.30am-5pm Sat: 9am-1pm (they will also collect bags of plastic ready to be put into bricks)

The Three Tuns, Great Bedwyn

Thatcham: Thatcham Baptist Church – Tuesdays 10am to 3pm, Sundays 10am to 12.30pm, Sundays 6 to 7.30pm

Newbury: 41 Kingsbridge Road, Newbury, RG14 6DY  
– there is a bin marked for eco-bricks





# Bright Sparks Nursery School



East Woodhay Village Hall, Heath End, Newbury (only 4 miles)

We have an **Outstanding** OFSTED report

We have fully qualified teachers including specialists for French, Music, Dance, Football, Fitness and Forest School

Places are offered to children aged 2 - 5 years

Head Teacher: Mrs Cherida Daniel B.A. Hons, Mont. Dip. EYPS

[www.brightsparksnursery.co.uk](http://www.brightsparksnursery.co.uk) Telephone: 01747 870432 or 07768123139

## KEITH LAWRENCE

KITCHEN BEDROOM & BATHROOM INSTALLATIONS



**Planning to Completion**  
**Traditional & Contemporary**

FREE QUOTATIONS 01488 608789

3 Ermin Street, Stockcross, Berkshire RG20 8LG

[www.lawrenceinstallations.co.uk](http://www.lawrenceinstallations.co.uk) 01488 608789



## Silver Birch Beauty

*Make yourself beautiful*

Pamper yourself with our comprehensive range of beauty treatments, with our fully qualified beauty therapist, in a lovely and relaxing treatment room in Highclere, offering complete peace, privacy and tranquillity.

Contact us: 07768 541 816

[jo@silverbirchbeauty.co.uk](mailto:jo@silverbirchbeauty.co.uk)

[www.silverbirchbeauty.co.uk](http://www.silverbirchbeauty.co.uk)



www.  
**Howard the Sweep**  
.co.uk

**Cleaner Chimney Sweeping  
& Wood Burner Installations**

07531 277668

01635 202262

[trevor@howardthesweep.co.uk](mailto:trevor@howardthesweep.co.uk)



- Guild of Master Sweepers & HETAS accredited
- Traditional & power sweeping methods
- Flues lined & wood burners installed
- Cowls/caps/cages supplied/fitted
- Bird nests removed
- Camera inspections
- Servicing & repairs
- Certificates issued
- Fully insured



audrey robinson  
garden design



Professional, experienced  
and reliable

Garden Design

Border Design

Border Maintenance

01264 738580

07920 425704

[www.audreyrobinsongardendesign.co.uk](http://www.audreyrobinsongardendesign.co.uk)

## MARIO'S PLUMBING

**25 years' experience**

- gas/oil boiler servicing and replacements
- power flushing
- central heating and general plumbing

GAS-SAFE registered

**Telephone Mario**  
**07967123819**

## LOCK & McDERMOTT LTD

*Painters and Decorators*

Qualified with over 30 years' experience working in the private sector  
TRADING STANDARDS APPROVED TRADER  
CRB CHECKED

telephone: 01264 351094 and 01264 363267

email: [lynda861@btinternet.com](mailto:lynda861@btinternet.com)

or [j.lock094@btinternet.com](mailto:j.lock094@btinternet.com)



## Kintbury and Woolton Hill Surgery Photography Competition

(closing date 31<sup>st</sup> October 2019)

Being in nature, or even viewing scenes of nature, reduces anger, fear, and stress and increases pleasant feelings. Exposure to nature not only makes you feel better emotionally, it contributes to your physical wellbeing, reducing blood pressure, heart rate, muscle tension, and the production of stress hormones.



With this in mind, we would like to invite all our staff, patients and local community to get out and enjoy some of our beautiful local scenery and take some photos. Images can take any form, from landscapes to abstract interpretations. A selection of winning images will then be framed and hung as artwork at our surgeries.

*There is no limit to the number of images individuals can submit, please write your name, photo location and contact number on the back of any submissions and hand them to reception.*

Happy Snapping and increased wellbeing!

**The Kintbury and Woolton Hill Surgery Teams**



**Journey** textile ART07

**28<sup>th</sup> September - 6<sup>th</sup> October**  
**10am - 4pm daily**

**The Gallery, Headley Community Shop,  
Thornford Road, Headley RG19 8AD**

**free entry ♦ refreshments ♦ proceeds to Breast Cancer Care**



October 2019  
The Rectory,  
Woolton Hill

Dear Friends,

Did you know that Charles Wesley wrote 8,989 hymns? Some of his hymns are among the most popular, such as "And can it be" or "O for a thousand tongues to sing". What is your favourite hymn I wonder? Other hymns that regularly top the list in public polls include "Amazing Grace" and "How great thou art". But what is yours? One of my favourite hymns is 'I heard the voice of Jesus say, 'Come unto me and rest'. It has beautiful words, by Horatius Bonar, which remind me of the care and protection of Jesus. It is sung these days to an equally beautiful old English folk tune called "Kingsfold" harmonised by Ralph Vaughan Williams (a piece of music often to be heard on Classic FM!). A meaningful hymn with a lovely tune can be a wonderful source of comfort in time of need, courage in time of change, inspiration in time of doubt and often an uplifting way to express praise and adoration of God and celebrate the wonder of the creation he has made.

We are holding a Benefice Songs of Praise this month at **4.30pm on Sunday 13<sup>th</sup> October**. It is a service for everyone from all our five parishes and is being hosted by St Martin's Church, East Woodhay. We asked those who attended our summer round of benefice services to suggest their favourite or special hymn: this resulted in a list of 42 hymns! I would like to reassure you that we won't be singing all 42!! But we will be having a good sing of a few really good hymns from the list. Come and join in to find out which ones!

With every blessing to you all,  
Canon Christine

From the Church Registers: August 2019		
<b>Baptism: we ask God's blessing on the lives of....</b>		
4 <sup>th</sup> August	Henrietta Georgina Hughes Millie Grace Steadman Athena Helen Gordon	Woolton Hill
25 <sup>th</sup> August	William Thomas Michael Dorrington	Ashmansworth
<b>Wedding: may God bless their life together</b>		
9 <sup>th</sup> August	Paul Page & Rachael O'Brien	East Woodhay
<b>Blessing of Marriage: may God bless their life together</b>		
3 <sup>rd</sup> August	Tim & Renée Weston	East Woodhay
<b>Funeral: may he rest in peace</b>		
13 <sup>th</sup> August	John Thomas Francis Giles (West Berkshire Crematorium)	Highclere
<b>Burial of ashes: may they rest in peace</b>		
21 <sup>st</sup> August	Jean Florence Wing	Highclere
27 <sup>th</sup> August	Margaret Yvonne Burr	Highclere

## NORTH WEST HAMPSHIRE BENEFICE

Ashmansworth + Crux Easton + East Woodhay + Highclere + Woolton Hill  
making Christ known in our communities

### Church Services OCTOBER into NOVEMBER 2019

<b>SUN 6<sup>th</sup></b> <i>Harvest</i>	<b>Harvest Festival</b> Harvest Festival <b>Harvest Parish</b> <b>Communion</b> Harvest Festival	<b>Woolton Hill</b> Highclere <b>East Woodhay</b>  Ashmansworth	<b>9.30am</b> 11.00am <b>11.00am</b>  11.00am
<b>SUN 13<sup>th</sup></b> <i>Trinity 17</i>	<b>Holy Communion</b> <b>Parish Communion (SC)</b> Matins Holy Communion <b>Benefice Songs of Praise</b>	<b>East Woodhay</b> <b>Woolton Hill</b> Highclere Ashmansworth <b>East Woodhay</b>	<b>8.00am</b> <b>9.30am</b> 11.00am 11.00am <b>4.30pm</b>
<b>SUN 20<sup>th</sup></b> <i>Trinity 18</i>	<b>Morning Worship</b> <b>Family Service</b> Parish Communion Evensong (BCP)	<b>Woolton Hill</b> <b>East Woodhay</b> Highclere Crux Easton	<b>9.30am</b> <b>9.30am</b> 11.00am 5.00pm
<b>SUN 27<sup>th</sup></b> <i>Bible Sunday</i>	Holy Communion <b>Parish Communion</b> Messy Church Holy Communion <b>Baptism</b> Evensong (BCP)	Highclere <b>Woolton Hill</b> Ashmansworth Crux Easton <b>Woolton Hill</b> <b>East Woodhay</b>	8.00am <b>9.30am</b> 11.00am 11.00am <b>12 noon</b> <b>6.00pm</b>
<b>SUN 3<sup>rd</sup></b> <b>NOV</b> <i>All Saints</i>	<b>All Together</b> Matins <b>Family Communion</b> <b>- with Baptism</b> <b>All Souls' Thanksgiving</b> Evensong	<b>Woolton Hill</b> Highclere <b>East Woodhay</b>  <b>Woolton Hill</b> Ashmansworth	<b>9.30am</b> 11.00am <b>11.00am</b>  <b>3.00pm</b> 6.00pm

**WED 2<sup>nd</sup>, 9<sup>th</sup>, 16<sup>th</sup>, 23<sup>rd</sup>, 30<sup>th</sup>** Holy Communion Woolton Hill 10.00am

**Rector: Revd Canon Christine Dale** (Rest day: Friday)  
The Rectory, The Mount, Woolton Hill, Newbury RG20 9QZ 253323

**Readers:** Mary Herbert 255700, Horace Mitchell 254677,  
Mike Sarson 07913 943504

**Reader Emeritus:** Rosemary Cahill 253306 **Lay preacher:** Angela Myers 254559

## St Francis de Sales

### Roman Catholic Church, Wash Common

Parish Priest: Fr Bruce Barnes. Masses: Saturday 6pm Sunday 10am  
Warren Lodge, Warren Road, Newbury RG14 6NH Tel. 01635 40332

# Flower & Produce Show

In spite of another challenging growing season the Show was a great success with entries similar to last year. More than 130 people flocked to this keenly anticipated local event having put down their needles, whisks and watering cans– it's not the taking part that counts – it's the winning!

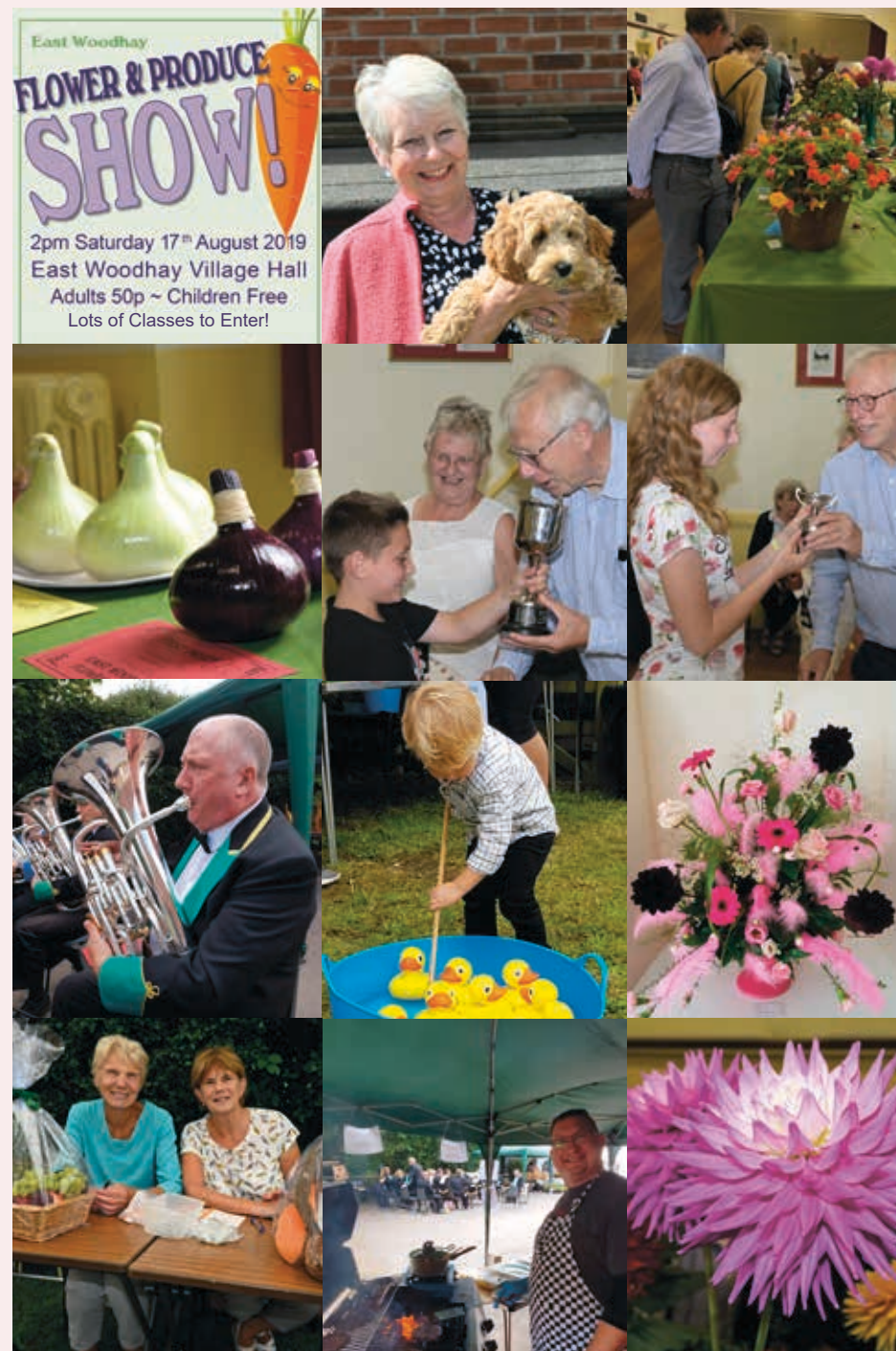
After looking at the entries in the many classes; which included vegetables, fruit, flower arranging, baking, preserves, handicrafts, children's classes and photography; there was a chance to enter your dog in the novelty Dog Show, enjoy a burger from the barbeque washed down with some real ale, buy a winning raffle ticket, scoop up some prizes on the tombola, watch the children hook a duck and catch up with friends and neighbours before heading home with a treat from the cake stall.

A huge 'Thank you' to all our volunteers, supporters and sponsors.

Dr. Colin West presented the cups and then conducted the auction of donated produce at the end of another fun-packed village event.

## Cup Winners

- The Hayes Challenge Cup – Les Barber
- The Arthur Curnick Cup – Bill Webb
- The Coronation Cup – Les Wallace
- The John Partridge Memorial Cup – Les Barber
- The Ladies Challenge Cup – Jean Partridge
- The Sampson Cup – June Powell & Joyce Pack
- The Carden Challenge Cup – Amelia Gibbons
- The Cecil Tate Memorial Cup – Jack McGraghan
- The Barber Cup – Nina Powell
- The Chairmans Cup – Lily Powell
- The Canon Stephenson Cup – Julia Woodroffe
- The Ellen Webb Challenge Cup – Les Wallace
- The George Tilling Memorial Cup – Les Wallace
- The Floral Cup – Les Barber
- The Frederick Marsh Cup – Alan Powell
- The Bill James Cup – Mike Robinson
- The Tom Trice Memorial Cup – Norman Powers
- The Walt Hills Memorial Cup – Bill Webb
- The Mrs R Thomas Cup – Julia Woodroffe
- The Jane Wells Cup – Amelia Gibbons





## Welcome to the Oakwood Clinic, Highclere



For a highly effective **Deep Tissue Massage** that really gets into the underlying muscular fibres and knots, minimising stiffness and pain.

Wonderful **Hot Stone Therapy** for superior relaxation through Aromatherapy Massage and the healing warmth of stones.

Also **Ear Candling, Reflexology, Aromatherapy, Facials.**

Monthly Offers and vouchers always available. Ladies only please.

Call Charlotte Piddington (ITEC) on 01635-255332, text 07733442059

[www.theoakwoodclinic.co.uk](http://www.theoakwoodclinic.co.uk)

## Handy4Jobs

- Painting Decorating & Tiling
- Kitchen & Bathroom Fitting
- All aspects of Gardening & Fencing
- Window Cleaning, Facias & Guttering



General DIY & Gardening ~ Wayne Murkett, Handyman  
07796813580 ~ 01635 31016 ~ 07796950639

## JUMBLE SALE

(In aid of St Thomas' Church)

**Woolton Hill Church Hall**

**Saturday 2nd November**

**2.00 p.m.**

**White Elephant, Books, Bric-a-brac, Toys**

**Jumble to the Hall on the morning of the Sale or phone:**

**Pat Woodage - Tel No: 46518**

**(Offers of help greatly appreciated)**

## NORTH WEST HAMPSHIRE BENEFICE

ASHMANSWORTH + CRUX EASTON + EAST WOODHAY  
+ HIGHCLERE + WOOLTON HILL

...making Christ known in our communities



# Benefice Songs of Praise

4.30pm

Sunday 13<sup>th</sup> October 2019

For all our parishes... everyone is welcome.  
Come and share our celebration...

*followed by refreshments*

at St Martin's Church  
East Woodhay



## AREA SWEEP

### CHIMNEY SWEEP

A PROFESSIONAL CHIMNEY SWEEP SERVICE  
CLEAN RELIABLE BRUSH AND VACUUM  
FULLY INSURED MANY YEARS EXPERIENCE

AGA'S  
RAYBURNS  
JETMASTERS  
ALL OPEN FIRES  
WOODBURNERS  
NEST REMOVALS  
OIL FIRED BOILERS  
SWEEPING CERTIFICATES ISSUED  
CAPS AND COWLS SUPPLIED AND FITTED



CALL DARREN

01635 569195/07900398678  
areasweep@btinternet.com

## BALL HILL COACHWORKS

Ball Hill, Newbury, Berkshire

Body & Paintwork Repairs

Affordable VAT Free Repairs

Free Estimates

Delivery & Collection Service

Telephone Ian Liddiard on  
01635 254487



Newbury Smile Studio  
DENTAL PRACTICE

Telephone 01635 47757 or visit  
[www.newburydentist.co.uk](http://www.newburydentist.co.uk)  
or email [info@newburydentist.co.uk](mailto:info@newburydentist.co.uk)

"General private dentistry  
with extra special care for  
nervous people"



- TRADITIONAL AND POWER SWEEPING AVAILABLE
- NESTS REMOVED
- CAGES, CAPS AND COWLS FITTED
- CCTV SURVEYS
- SWEEPING CERTIFICATES ISSUED
- PROFESSIONAL, CLEAN SERVICE
- FULLY INSURED
- POLICE CHECKED



01635 45175  
[wilkinschimneysweep.co.uk/newbury](http://wilkinschimneysweep.co.uk/newbury)

**smarthire**  
— vehicle rental —

01635 552200

[SmarthireVehicleRental.co.uk](http://SmarthireVehicleRental.co.uk)

Third Street, Greenham Business Park,  
Newbury RG19 6HW

- CARS
- VANS
- MINIBUSES
- TRUCKS

Going away?



Mature local lady with much  
experience,  
will come into your home,  
feed and love your cats  
and water your plants.  
Good local references.

Call 253776 or 07759 318689

**G A BUTLER & SONS LTD**  
Specialist Tree Surgeons

01635 254 771

- Tree Surgery
- Hedge Cutting
- Stump Grinding
- Seasoned Logs
- Wood Chippings
- Fencing



[www.lopit.co.uk](http://www.lopit.co.uk)

## Airport Transfers



Professional service in luxury cars to  
anywhere in the UK for Business & Pleasure.

- Meet & Greet in the terminal, no waiting for shuttle buses
- Flights monitored, so we are always on time
- Door to Door service, leave your own car at home
- Help with luggage
- Affordable prices
- All cards accepted (charges apply)

'Don't drive home tired, let us drive you in  
comfort and style'

Email: [glntransfers@gmail.com](mailto:glntransfers@gmail.com)

[www.gln-transfers.co.uk](http://www.gln-transfers.co.uk)  
Tel: 07747 800707 or 01488 648719

## Progress on the Amenity Project

A new shed has been erected at the rear of the Hall to house our trestle tables, flower show tents and gazebos and fete games equipment. In addition to creating storage space in the hall, equipment hirers will be able to collect and return at their convenience, without disturbing the users of the Hall.

New LED lighting units have replaced the old fluorescent lights, giving double the level of illumination and the ability to dim the lights to a required level. The old fluorescents presented a considerable maintenance problem and their limited height restricted the use of the hall for sports such as table tennis and badminton; both are now possible.

The stage floor has recently been lowered to the level of the hall floor, together with the two doorways. The large amount of unwanted items recovered from underneath the stage was something of a surprise and their disposal will have to be done fairly quickly!

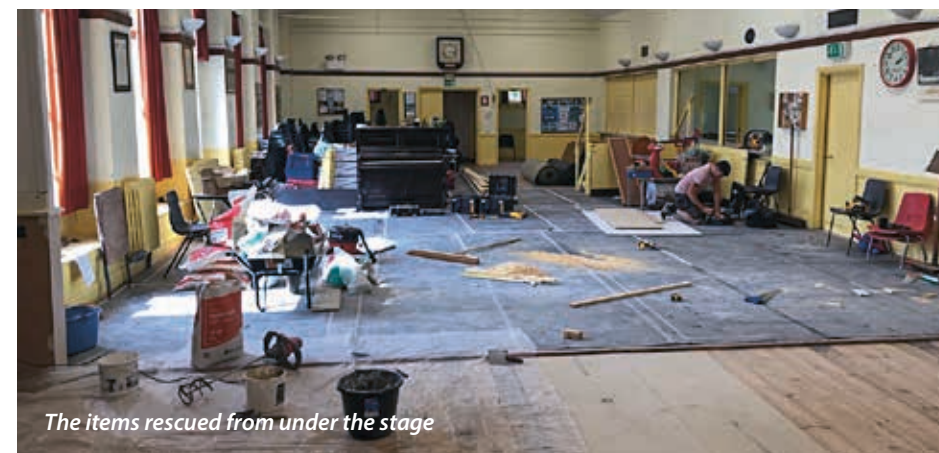
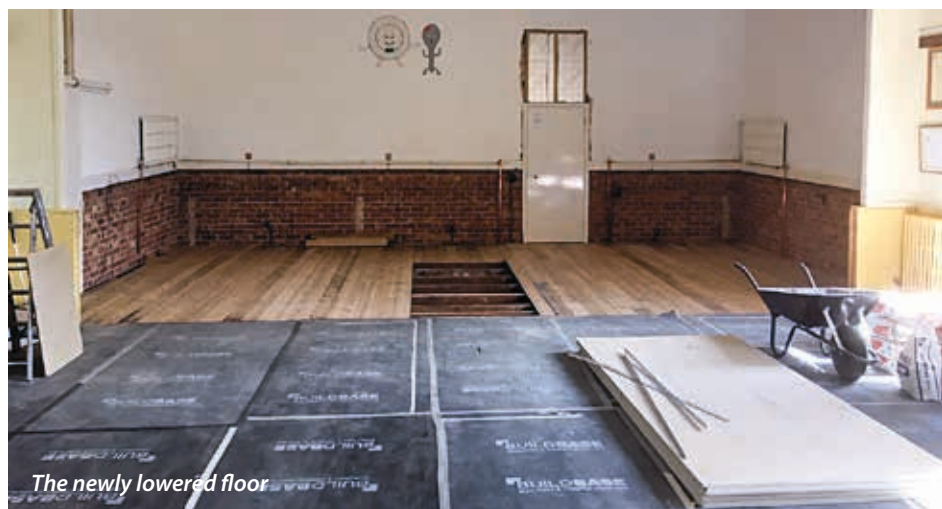
The work took up the time available between the Flower Show and the beginning of Autumn term for Bright Sparks, so as an interim measure the doors that previously gave access to the understage have been retained as a barrier between the main Hall and what is now an open flat storage space.

With the help of Barry Lambert and members of the Bowls club we have organised the storage into areas for tables, chairs and each of the main users of the Hall.

The next phase will take place during the October half term break, when partitions will be erected to form three storage areas around a performance space.

In the meantime we shall be arranging to replace the existing chairs with folding chairs mounted on wheeled carriers, and trolleys for the tables which will make it much easier for users to set up the hall and clear away after use.

Report from Peter Stanley on behalf of EWPC



## Woolton Hill & District Gardeners' Club



Our last event of the summer was the afternoon Cream Tea gathering, held in Margaret and Brian Burghams's immaculate garden. We all appreciated how much work must have gone into such a colourful and healthy display. No competition this time – members were invited to bring homegrown tomatoes for tasting but most, like us, found that their crops were not quite ready in time.

At the October meeting, on Thursday 24<sup>th</sup> October, we welcome Paul Patton to tell us about Bugs and Beesties. An interesting subject just before Hallowe'en? Our meetings are held in Woolton Hill Church Hall on the fourth Thursday of each month, and guests and new members are always welcome.

CMV





### Upholstery by Suzanne

City & Guilds Qualified

### Bespoke upholstery and soft furnishings specialist

Please feel free to discuss your needs. Courses and one to one instruction available, details on the website.

01635 522282 07979 304044

[www.upholsterybysuzanne.co.uk](http://www.upholsterybysuzanne.co.uk)

## the garden carpenter

decks, fences, gates and sheds  
uncompromising quality

for a free estimate contact Duncan Graham  
[www.thegardencarpenter.com](http://www.thegardencarpenter.com) 01635 552301

## JO MEACHAM

### GUITAR TUITION RECORDING STUDIO

[www.jomeacham.com](http://www.jomeacham.com)

[jomeacham@me.com](mailto:jomeacham@me.com) 07899 907447



Ginny Baldwin

### Catering for all occasions

- Business and conference buffets
- Private parties, social functions
- Wedding receptions, etc.

For further information and menus

email: [ginny@sykick.com](mailto:ginny@sykick.com)

Telephone: 01635 552332

## Liberty Garden Buildings



GREENHOUSES  
HOME OFFICES  
GARDEN ROOMS  
ROTATING PODS  
SUMMERHOUSES  
GARDEN SHEDS

[www.libertygardenbuildings.com](http://www.libertygardenbuildings.com)

Yew Tree Garden Centre,  
Ball Hill, Newbury RG20 ONG

01635 255533

## The Friendly Oil Boiler Service



Fully qualified and insured, OFTEC certified  
oil fired boiler engineer.

All oil boilers serviced, repaired, replaced  
and commissioned.

**Simon Wake**

Daytime or  
emergency: 07970 072629

01635 282992

[www.friendlyoilservice.com](http://www.friendlyoilservice.com)



[berkshirefencing.com](http://berkshirefencing.com)

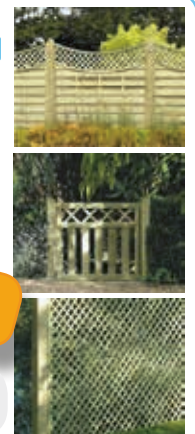
fencing without the fuss

All types of wooden fencing and gates.  
Supply and installation or supply and delivery.

Trellis	Post & Rail	Continental
Traditional	Picket	Closeboard
Wooden and Concrete Posts and Gravel Boards		

Call or email for  
a free quotation

Telephone: 01635 254214 mail: [mel@berkshirefencing.com](mailto:mel@berkshirefencing.com)  
web: [berkshirefencing.com](http://berkshirefencing.com)



## Do you need your fence repaired or replaced?

Whether your job is large or small, we can help.

Local, fully insured specialists in domestic fencing and gates, shed supply and erection, timber landscaping.

Free site survey and quotation  
call Kevin on 07765 443 159  
or email [kevinitooze@gmail.com](mailto:kevinitooze@gmail.com)



# Mown & Grown

Landscaping ~ Tree Surgery ~ Garden Maintenance

- Hedge cutting
- Tree work
- Grass cutting
- Garden maintenance
- Fencing
- Fully insured

for a free quotation call 07770993817

[MownAndGrownNewbury@Gmail.Com](mailto:MownAndGrownNewbury@Gmail.Com) ~ Visit our website: [MownAndGrown.Net](http://MownAndGrown.Net)

### FOOT HEALTH CARE

by **PAULA CARTER** Dip CFHP, MPSPract  
HOW CAN I HELP YOUR FEET?

*I'm a fully qualified, accredited and insured foot health practitioner. General foot care and routine problems relieved quickly and painlessly in the comfort of your own home.*

- Nail cutting & filing
- Fungal or thickened nails
- Ingrown nails
- Painful corns removed
- Cracked & dry heels
- Verrucae
- Athletes foot
- Callus reduction
- Diabetic care
- Plantar faciitis & heel pain



Call or text 0790 1822 125



*Antique Silver & Gold  
Bought, sold & valued*



*Edward, Reis Silverware,  
Ball Hill.  
Tel. 01635 250505  
[e.reis@tiscali.co.uk](mailto:e.reis@tiscali.co.uk)*

## ATH PLUMBING & HEATING

Gas Safe & OFTEC Registered

New installations  
System updates  
Maintenance  
Boiler Changes  
Power flushing  
Bathroom installation  
Insured, references available.  
Free estimates

Tel: 01635 254787  
07979718427

## M.W. SUTTON

Roofing Specialists  
3 Byeways, Highclere

*Family business established 1972*

Contact Jason Sutton  
for free quotations:

Mobile 07770 626230  
Home 01635 253951  
[suttonroofing@yahoo.co.uk](mailto:suttonroofing@yahoo.co.uk)

Fully insured to carry out  
all your roofing needs

CLIFTON'S K9's

"A WALKED DOG IS  
A HAPPY DOG"

- Daily Dog Walking
- Feeding & care of all small animals whilst you are away

Whether you are going away for a few hours or a few weeks, or need assistance due to illness or disability, I can help look after your favourite furry friends. Services and prices to suit each individual needs

For a friendly, practical & reliable service

Call Emily on: 0796 700 3234  
or email: [cliftonconsultants@live.com](mailto:cliftonconsultants@live.com)

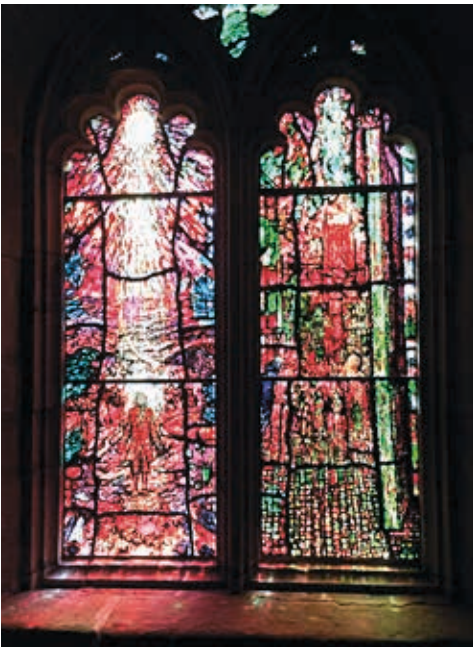
References available and fully insured





## A Trip to Hereford Cathedral

*With a buzz of anticipation 37 people boarded a coach in Woolton Hill on a bright August morning bound for Hereford to visit the cathedral with its historic treasures and to explore the ancient city.*



The day was organised by Ann Fleming and Carol Currey under the auspices of St Thomas' Social and Fund-raising committee and was the third summer outing of its kind.

The party, comprising mainly local residents but including friends from further afield, was welcomed on arrival with coffee and cake in the magnificent College Hall which was located beyond the rambling medieval Vicars Choral cloisters, still inhabited by cathedral staff today.

A guided tour of the cathedral had been booked for 1pm and in the meantime small groups went out to enjoy the delightful Vicars' Garden, meticulously maintained by a team of local volunteers, take a look at the characteristic old black-and-white buildings of the town or have a gentle

walk along the peaceful river Wye.

The excellent guides explained the history of the building from its Norman pillars and arches, through Gothic additions in the 13<sup>th</sup> century to the latest reconstruction of the West front dating from 1908, replacing the original medieval west tower which collapsed in 1786 as a result of an earth tremor. Along the way they pointed out the 14<sup>th</sup> century choir stalls, the magnificent Lady Chapel and the memorial to St Thomas Cantilupe, as well as more modern features such as the inspiring SAS memorial and the beautiful Tom Denny stained glass in the Audley chantry, commemorating the local poet Thomas Traherne.

The world-famous Mappa Mundi exhibition and the Chained Library also proved



fascinating for those who opted to include this in their visit.

In spite of traffic problems—roads unexpectedly closed and, on the return journey, a small broken down van causing a jam out of all proportion to its size—the day was a huge success and resulted in a surplus of £145 which was donated to St Thomas' churchyard improvements project.

With so much still to see and enjoy, such as the crypt and the tower, not to mention the glorious music, no wonder some of the group are contemplating a second visit. Meanwhile plans are already being discussed for next year's trip to discover another of our great cathedrals.

Nicole Bentham with photos by Jane Halliday & Genie Stapleton



# East Woodhay Society



## Barn Dance:

The annual village Barn Dance is on Saturday 5<sup>th</sup> October – this is always a great laugh and we have an experienced band and caller to help us through the steps. It starts at 7:30pm and will end at 10:30pm. If you have not yet secured your tickets, do please send me an email to secure your tickets to avoid missing out.

**Village Barn Dance**

*come and meet new people* **for all the family**  
with  
**The Aldbrickham Band**

**Saturday 5th October 2019**

7pm doors open for 7.30pm start

**Woolton Hill Church Hall**

**£15 (£10 under 16s) includes Ploughman's Supper**  
Please bring your own drink

For tickets contact Mark Rand (Tel 250898) or email eastwoodhaysociety@gmail.com




## WooltonHill.Com website

Helen Carlile, the owner of our local website WooltonHill.com, has moved out of the area and it has been agreed

that East Woodhay Society will take over the website. We would like to thank Helen for all the hard work she has done over the years; to set up and maintain the site for the local community and I know it is an invaluable resource for those within the area and those moving to the East Woodhay Parish.

As technical capabilities have changed over the years, we are taking the opportunity to utilise a different technology and redesign the website, leading to a modern 'look and feel'. We will be releasing the website very soon. In the meantime, please do let me know of any information which you would like the site to contain and I can make sure we include this. We want this to be a full community website.

## Walks and Footpaths:

Our regular Friday morning walks, which are around 3 miles in length, start at 10.30am and last around an hour. 4<sup>th</sup> and 18<sup>h</sup> October are from St Thomas' Church Hall, where we also finish with a welcome coffee/tea, and 11<sup>th</sup> and 25<sup>th</sup> October from the Rampant Cat.

Mark Rand – Chair EWS

Email – eastwoodhaysociety@gmail.com

## Woolton Hill Post Office and Stores

Post office, Newsagent, National Lottery Off-Licence & General Stores

Post Office Open:  
Monday to Friday 9am-5.30pm  
Saturday 9am-12.30pm  
We also hold Euros and Dollars



We also deliver newspapers in surrounding 4 miles.  
Woolton Hill Post Office & Stores  
Broadlayings  
Woolton Hill RG20 9TR  
**01635 253463**

## BALL HILL GARAGE

(Established 1929)

MOT, Servicing, Repairs, Air Con, Servicing, Engine Diagnostics, Batteries, Exhausts, Welding, Tyres & Wheel Alignment.

Horse box and horse trailer service & repair

*courtesy cars available, automatic and manual free collection and delivery service*

**Tel 01635 253282**

please check website for further details  
[www.BallHillGarage.co.uk](http://www.BallHillGarage.co.uk)  
[enquiries@ballhillgarage.co.uk](mailto:enquiries@ballhillgarage.co.uk)



## VG Furnishings. The Curtain Specialists.



01635 867804 • [www.curtainspecialists.co.uk](http://www.curtainspecialists.co.uk)

## Personal Computers

new - repairs - upgrades - data recovery - no job too small

phone John on **01635 254102**



# TREETOPS WELLBEING & CREATIVITY

YOGA & MEDITATION - ART CLASSES  
COOKERY CLASSES - CRAFTS

www.treetops-newbury.co.uk

Contact Emily on 01635 44850 emily@treetops-newbury.co.uk

Facebook - Treetops Newbury




## Penwood Nurseries



Thousands of different hardy trees, shrubs, herbaceous perennials, roses, conifers, fruit, climbers, ferns and grasses are always available.  
A family run business. Most of our stock is produced on site and we are happy to help you find just what you are looking for.

enquiries@penwoodnurseries.co.uk www.penwoodnurseries.co.uk  
The Drove, Penwood, Newbury RG20 9EW  
01635 254366

## Clere

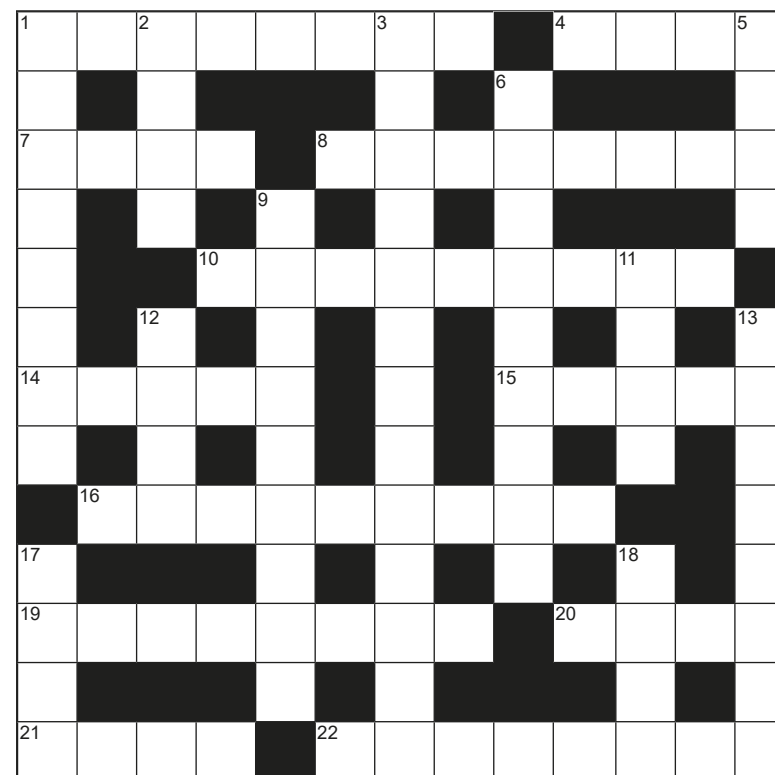
BOOKKEEPING SERVICES

Local professional service tailor-made to meet your requirements and budget

**Vicki Kyle-Lawrence**  
Tel: 07970 297940  
Email: info@clerebookkeeping.co.uk  
www.clerebookkeeping.co.uk

- Purchase ledger processing
- Invoicing and credit control
- Bank reconciliations
- VAT returns
- Monthly management reports

The Beeches, 2 Greenways, Woolton Hill, Newbury RG20 9TD

# 201

**Answers crossword no 200**  
**Across:** 1 Doghouse, 4 Fool, 7 Icon, 8 Gossamer, 10 Amsterdam, 14 Ashes, 15 Nasal, 16 Turnabout, 19 Shallows, 20 Hebe, 21 Arts, 22 Asbestos  
**Down:** 1 Dairymen, 2 Gaol, 3 Short Mat Bowls, 5 Lure, 6 Astronaut, 9 Amusingly 11 Also, 12 Thou, 13 Flannels, 17 Asia, 18 Best

### Across

1. I care about vet who has some unusual ideas (8)
4. Remedy for someone feeling quietly unwell (4)
7. Speed at which you can swish cape around (4)
8. First gamble on letters (8)
10. Smash speed at which meal appears (9)
14. Do not hesitate, grab fly between the head and abdomen (5)
15. I love Popeye's mate! (5)
16. Drops cats in the mail whilst on holiday (9)
19. Chef mixes saki for dinner (8)
20. Father goes in feeling uncomfortable (4)
21. Sari skirt reveals hidden danger (4)
22. Local area network found in attic covers entire ocean (8)

### Down

1. Hat on street, one for the top (8)
2. Reach right out for everyone (4)
3. Traders in Woolton Hill take common title (7,6)
5. Plenty of items for auction (4)
6. Wonder whether felt hoods would have helped in Noah's time, or more recently, in Whaley Bridge (3,6)
9. Fasten ear part to chicken dinner (9)
11. Kim's around to remove the surface (4)
12. Go back to back to find German (4)
13. Chic name for repair man (8)
17. Visionary leaves seafarer and travels a long way from home (4)
18. Both speedy and hard to move (4)

## P J Cole Plastering & Brickwork

- ✓ Qualified and reliable local bricklayer and plasterer
- ✓ All types of plastering, floor screeds, artexing/plastering over artexed ceilings, coving, tiling, garden walls, patios and extensions undertaken
- ✓ Fully insured
- ✓ No job too small
- ✓ References available
- ✓ Quotations available upon request

**Please contact 07771 865621 or 01635 253300 for further information**

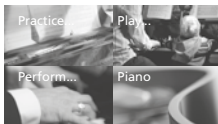
## ... the piano specialists



Large selection of:  
upright pianos | grand pianos  
new | used | restored

Grotrian-Steinweg specialist ■  
Official Bluthner piano centre ■  
Kawai piano selection centre ■

sales | tuning  
| transportation | restoration



BEN WHEELER  
**Pianos**

01256 477198  
www.benwheelerpianos.co.uk

## experienced, qualified **TUTORS** available

- English, Mathematics
- Sciences, Languages
- Geography, History
- English as a Foreign Language
- Computing

All ages, all levels

**Telephone:  
01635 253942**

## Arthur A Beaver Ltd

ESTABLISHED 1909

**Building Contractors  
Heating and Sanitary Engineers**



INSTALLATIONS  
REPAIRS  
MAINTENANCE  
SYSTEM UPDATES  
BOILER CHANGES  
QUALITY WORKMANSHIP  
& MATERIALS  
ALL ASSOCIATED  
BUILDING  
WORK UNDERTAKEN  
INCLUDING  
ELECTRICAL WORK

DOMESTIC & COMMERCIAL  
FREE ESTIMATES & COMPETITIVE PRICES

**Tel 01635 253240**

## Stuff & Nonsense - dispatches from middle England.

By reading this you hereby agree to the corporation's terms and conditions, full details of which can be found on our website. What do you mean, you haven't got time to read 31 pages of legalese? Actually I've just edited my T&Cs down substantially. So substantially in fact that there is now only one, "**Don't believe any of this tosh.**"

So there I was mowing the lawn and shortly began to drift off into what I like to think of as mindful meditation. I was nearing nirvana when I noticed out of the corner of my eye a hurried movement in the hedge alongside. Some bird or small animal was scuttling alongside me. I stopped to investigate but there was no sign of a mouse doing a Tarzan act, rapidly swinging from branch to branch of the privet. I resumed grass cutting and despite spending less time on the astral plane, I saw nothing more of this phenomenon. For the time being this was to remain a mystery.

*The village sign was looking a tad grubby so I decided to clean it up. It took three boxes of brillo pads and a bucket of elbow grease. The result though was well worth the effort.*



A quick plug here for markets. We have of course our own excellent market on the last Saturday of the month at Woolton Hill Church Hall. In addition, why not treat yourself to the small but perfectly formed Hungerford Market held every Wednesday. Parking is cheap and plentiful, you can buy high quality fruit and veg in paper, (yes paper) bags and the adjacent café is a treat. Less welcome in Hungerford is a new watering hole, part of a well-known coffee house chain. I don't wish them harm of course, it's just I would prefer to see restored my bank branch it replaced.

We all like to buy shiny new things and what comes shinier than a new car? For only the second time in my now longish life I was set to have one. The object of my affection was a modest, small Japanese family hatchback and its buying - or should I say, its selling - was unnecessarily protracted; more of this in a later dispatch perhaps. One item on the bill caught my eye. I was being charged a great deal for delivery. I was tempted to charge a similar amount for my tired trade-in I was delivering but the salesman lacked a sense of humour. Instead I remarked that wasn't £700 a bit steep for bringing a small car from Japan? He smiled knowingly, "Oh no sir, this Japanese car is made in Derby."

Meanwhile back in the garden I continued mowing and worked my way to the opposite hedge. There it was again, a distinct scuttling in the undergrowth alongside me. Again I stopped and again the creature disappeared. I restarted the mower only for my good lady to arrive with a cup of tea. Above the noise I enthusiastically recounted the story of the apparition. Eyes rolling, she silently pointed her foot at the exhaust of the lawnmower. It nearly blew her slipper off and finally the penny dropped.

Frank





## ART CLASS NEWBURY

- Step by Step guidance
- Suitable for adult beginners, refresher and improvers
- Meet new friends, unlock your talent
- Fun, easy just 3 hours per week
- Courses held throughout the year, limited spaces – CALL US for more info

The Art Class you always wanted

01256 810933 – [www.theseasonsartclass.com](http://www.theseasonsartclass.com)

# Pure Clean Window Cleaning

*also frames, canopies, cladding, conservatories, guttering & soffits*

Call Claire or Martin on 01635 523917 or 07958 207451  
email [kimble@techie.com](mailto:kimble@techie.com)

## TUITION IN FRENCH AND GERMAN

Would you like to brush up your language skills? Would you like to learn a new language from scratch? Does your child need that extra edge at GCSE or A level?

I offer one to one tuition in the relaxed surroundings of my own home with flexible tutoring focusing entirely on your needs. I am a former Head of Department and examiner for The University of Cambridge Examination Board.

Recommendations available.

Contact Carolyn Wood on 01635-254140 or 07799 586263.



## Chartered Financial Advice & Bespoke Wealth Management Services

[www.essential-wealth.co.uk](http://www.essential-wealth.co.uk)

01488 669840

[enquiries@essential-wealth.co.uk](mailto:enquiries@essential-wealth.co.uk)



## Heritage Restorations

Kate Russell

*Specialist Antique &  
Contemporary Furniture  
Restorer*

West Dean College trained  
(Conservation & Restoration  
Global Centre of Excellence)

0796 8357 788

[mrskaterussell@gmail.com](mailto:mrskaterussell@gmail.com)

*References available on request*

THE 1:1 DIET  
by Cambridge Weight Plan

**New  
thinking.  
New  
you!**

"...for  
greater weight  
loss with  
one-to-one  
support..."

Based in  
Woolton Hill,  
covering  
Newbury and  
surrounding  
areas



**Flexible Plans one-to-one support**

Contact **Rebecca Cooke**  
your local Consultant:  
tel 07787 316339 email [121dietbycwp@gmail.com](mailto:121dietbycwp@gmail.com)  
web [one2onediet.com/R Cooke](http://one2onediet.com/R Cooke)

# JUMBLE SALE HIGHCLERE VILLAGE HALL

SATURDAY 26<sup>th</sup> OCTOBER 2019 at 2.00 p.m.

In aid of Highclere Church (offers of help greatly appreciated)

Items For Sale To The Hall On The Morning Of The Sale  
Telephone: Molly 253264, Mo 250770, Mary 254264

# Directory of Local Organizations

## 24hr Emergency Numbers

Thames Water . . . . .0845 9200 888  
 Southern Water (water supply) . . . . . 01273 606766  
 Southern Electric . . . . . 105 or 08000727282

**Age Concern Hampshire Village Agent:** Sarah . . . . . 07806 659449

**Arbor Flora Group.** . . . . .Secretary: Ros Oles. . . . . 254790

**Basingstoke & Deane Borough Council** Basingstoke . . . . . 844844  
 member: Clive Sanders (*cllr.clive.sanders@basingstoke.gov.uk*) . . . . .254839

## Churches

East Woodhay, St Martin's . . . . .*www.stmartins.church*

Churchwardens . . . . . Richard Twallin . . . . . 253354  
 Andrew Colville . . . . . 254017

Woolton Hill, St Thomas' *www.wooltonhill.com/community/church/church.html*

Churchwardens . . . . . Chris Vane . . . . .253707  
 Bridget Wheeler . . . . . 250729

## Defibrillators

There are 2 public access defibrillators in the Parish. One at the Woolton Hill Church Hall and the other at the East Woodhay Village Hall

**Doctors' Surgery Woolton Hill** . . . . .253324

Patient Participation:. . . . . Rosemary Cahill . . . . . 253306

**Ducklings** Fiona Morgan. . . . . 42080

## East Woodhay & Highclere Neighbourcare Volunteer Driving

To arrange a drive please call:

Chris Sketchley . . . . . 07770 834592

Nicole Bentham . . . . .255582

Frieda King . . . . .253378

Enquiries/Volunteers-*www.ewhneighbourcare.org.uk* . . . . Keith Nunn..253888.

**East Woodhay Charities** . . . . .Secretary: Susan Wren . . . . . 254875

**East Woodhay Cricket Club.** . . . . .Contact Adrian Batchelor. 07810 647618

**East Woodhay Flower & Produce Show** . . . . .254114

*www.eastwoodhayflowershow.co.uk*

**East Woodhay Football Club.** . . . . .Chairman: Alan Jones . . . . . 254024

**East Woodhay Local History Society** . .Sec: Christine Dalton . . . 07880 628 114

**East Woodhay Parish Council Members:** . . . . .*www.eastwoodhay-pc.gov.uk*

Susan Cooper, 76 Harwood Rise, WH RG20 9XZ. . . . .254149

Paul Hurst, (Vice Chairman) 31 Greenacres, Woolton Hill RG20 9TA . . . . .254363

# Directory of Local Organizations

## East Woodhay Parish Council Members continued:

Phil Jarvis, Silvam, Mount Road, RG20 9QZ . . . . . 254422

Barry Lambert, Hollebeke House, Gore End Road, Ball Hill RG20 0PD . . . 254603

James Mitchell (Chairman) Southlawn, Church Road, WH RG20 9XQ . . . .254747

John Murdoch, 6 Tile Barn Row, Woolton Hill RG20 9TF. . . . .255216

Mark Rand, Lostock, Church Lane, Woolton Hill, RG20 9XG. . . . . 250898

Hanne Teece, Tendele, Trade St, Woolton Hill RG20 9UJ. . . . .253617

## East Woodhay Parish Clerk

Amy White, Gilton Ash, Tile Barn, RG209UX. . . . . 07480 042395

**East Woodhay Village Hall** . . . . .Carol Stanley. . . . . 01635 35859

*eastwoodvillhall@gmail.com* . . . . .07444310537

**East Woodhay Short Mat Bowls Club** .Contact: Cathy Neller . . . . . 255589

**East Woodhay Silver Band** . . . . .Contact: Rosemary Gittins 07917 522180

**East Woodhay Society.** . . . . .Chairman, Mark Rand . . . . . 250898

*mark\_rand@hotmail.com* . . . . .*www.wooltonhill.com/community/ews.html*

**East Woodhay Twinning Association** . Moyra Harkness, Secretary 01635 254426

**East Woodhay W.I.** . . . . .Secretary: Jean Ransom. . . . . 254070

**Hampshire County Council.** . . . . .Member: Tom Thacker . . 01962 771863

## Guiding-Woolton Hill

Woolton Hill Rainbows . . . . . Victoria Brackstone . . . . 07779 638622

Woolton Hill Brownies & Guides. . . . contact: Beckie Holmes . . 07899 682628

*2whbrownies@gmail.com*

**Highclere Film Club.** . . . . .Secretary: Chris Martin . . . . . 253461

**Highclere Evergreens** . . . . .Leader: Mrs. V. Burge . . . . . 864584

**Litter warden** . . . . .*litterwarden@eastwoodhay-pc.gov.uk*

**MP** . . . . Kit Malthouse. . . . . 01264 401401

*kit.malthouse.mp@parliament.uk* . . . . 2 Church Close, Andover, SP10 1DP

**National Women's Register** . . . . .Contact: Jean Brown. . . . . 254921

## Neighbourhood Watch

Woolton Hill . . . . . John Bentham. . . . . 255582

North End. . . . . Jack Castle . . . . .253537

**Newbury Chamber Choir** . . . . .*info@newburychamberchoir.co.uk*

**Nwby. Wkly. News WH Correspondent** .Nicole Bentham. . . . . 255582

**Police** . . . Hampshire Constabulary . . . . . 101

Position to be filled

**The Samaritans.** . . . . . 42452



# Directory of Local Organizations

## Schools

The Clere . . . . .	278372
Community Office. . . . .	278129
St Martin's East Woodhay, Infnts & Jnrs <a href="http://www.st-martins.hants.sch.uk">www.st-martins.hants.sch.uk</a> . . . . .	253489
St Thomas', Woolton Hill, Infants . . . . . <a href="http://www.stthomasinfant.co.uk">www.stthomasinfant.co.uk</a> . . . . .	253431
Woolton Hill Juniors . . . . . <a href="http://www.wooltonhilljunior.co.uk">www.wooltonhilljunior.co.uk</a> . . . . .	253364

## Spectrum <http://www.wooltonhill.com/Spectrum.html>

Chairman . . . . .	Bob King . . . . .	253378
Treasurer . . . . .	Gill Burrows . . . . .	254301
Distribution . . . . .	Chris Vane . . . . .	253707
Advertising. . . . .	Michael Robinson. . . . .	253004
Editors: Abbie Dando . . . . .		07477 987943
Mary Gulliver . . . . .	<a href="mailto:mary@TheGullivers.co.uk">mary@TheGullivers.co.uk</a> . . . . .	254567
Kathy Scott (6pm-9pm) . . . . .	<a href="mailto:spectrumwh@outlook.com">spectrumwh@outlook.com</a> . . . . .	254756
Jim Hannington . . . . .	<a href="mailto:seamusman3@gmail.com">seamusman3@gmail.com</a> . . . . .	07895637611

**St Martin's Guild** . . . . . Secretary: Sarah Leventhorpe . . . . . 255293  
[info@eastwoodhayfete.org.uk](mailto:info@eastwoodhayfete.org.uk) . . . . . [www.eastwoodhayfete.org.uk](http://www.eastwoodhayfete.org.uk)

**St Thomas' Handbell Ringers** . . . . . Nicole Bentham. . . . . 255582

## Woolton Hill & District Gardeners' Club

Contact . . . . . Nick Harcourt . . . . . 253546

**Woolton Hill Argyle Football Club.** Jon Dennis . . . . . [money.whafc@gmail.com](mailto:money.whafc@gmail.com)

## Woolton Hill Church Hall

Nick Harcourt, Charnwood Cottage, Broadlayings . . . . . 253546  
[hallbookings@wooltonhill.com](mailto:hallbookings@wooltonhill.com) . . . . . 07971 064087

**Woolton Hill Pre-School.** . . . . . Brenda Login . . . . . 254721

## Woolton Hill Sports Club

(tennis, table tennis) . . . . . Alison Whitehorn . . . . . 254391

## Woolton Hill Village Market

. . . . . Claire and Sally  
[www.whvm.co](http://www.whvm.co) . . . . . [whvmarket@gmail.com](mailto:whvmarket@gmail.com)

**Woolton Hill Website.** . . . . . Contact: Helen Carlile . . . . . 254043  
[www.WooltonHill.com](http://www.WooltonHill.com)

### Spectrum Advertising Rates with effect from April 2019

Annual rates—please contact Michael Robinson Tel 253004  
 For ALL fund-raising events (charity, political, etc) £3 per quarter page b&w, £5 colour  
 For all commercial and professional advertisements: £25 (colour) per quarter page  
 Invoices are issued once the publication has been sent to print. Please note that advertisements may be altered in size to fit the space available.

**Guidance to advertisers:** <http://www.wooltonhill.com/Spectrum.html>  
**Subscription: £5 per annum**



**CONTROL SERVICES**  
 Pest Management & Timber Care

Wasps · Hornets · Rats · Mice · Moles  
 Woodworm · Ants · Fleas · Flies · Moths  
 Bed Bugs · Beetles · Cockroaches

*Domestic and Commercial*

[www.pestcontrolberkshire.com](http://www.pestcontrolberkshire.com)  
 01635 250 852




**MG Windows**  
 IMPROVING THE LOOK OF YOUR HOME

Doors | Windows | Conservatories | Orangeries | Porches | Small Extensions  
 Aluminium Bi-Fold Doors | Kitchen Fitting | Electric Roller Garage Doors

[www.mgwindowsnewbury.co.uk](http://www.mgwindowsnewbury.co.uk) [info@mgwindowsnewbury.co.uk](mailto:info@mgwindowsnewbury.co.uk)  
 01635 254083 or 07900 487274

## How much did you say my pad was worth?



*"Can I just thank you and your team for your support throughout the process. I have always believed in the importance of local knowledge!"*

*Mr & Mrs B sold through Brunsdens*

**Contact Brunsdens Associates: Telephone: 01635 255501**  
**Email: [property@brunsden.com](mailto:property@brunsden.com) - Visit: [www.brunsdens.com](http://www.brunsdens.com)**

The Old Axe & Compass, East End, Newbury RG20 0AA



# MARSH fuels



*Heating Oil now available to collect in 20 litre drums*

**01635 253 253**  
**[www.marshfuels.co.uk](http://www.marshfuels.co.uk)**

H C Marsh (Newbury) Ltd, Ball Hill, Newbury, Berkshire. RG20 0PW

## Esseborne Manor hotel & restaurant

Weekday lunch with a glass  
of wine & canapes £23  
Sunday buffet lunch £28  
Afternoon Tea £17  
Dinner from £35  
7course tasting dinner £55  
Monthly Ladies Lunch £30

Hurstbourne Tarrant  
Near Newbury  
SP11 0ER



To book call 01264 736 444