

August 2019

50p

Spectrum





greentips

TREE SURGERY

YOUR LOCAL TREE CARE SPECIALIST

- Fully Qualified and Insured
- Tree Surgery
- Planting•Pruning•Removals
- Hedge Cutting
- Stump Grinding
- Woodland Management
- Chip, Mulch & Logs for Sale

T: 01635 254712

M: 07903 259973

www.greentipsuk.com

RosieCutbill
photography

Children, Families
& Weddings



T: 01672 540520

E: info@RosieCutbillPhotography.co.uk

W: www.RosieCutbillPhotography.co.uk

Editorial

Not to belabour the prickly point but since its mention in the Gardeners' Club report last month it has become apparent to me that more and more residents of Woolton Hill are sharing their gardens with the spikey descendants of Mrs Tiggywinkle! Much to the contrary of worrying reports of a decline in the hedgehog population in Great Britain the charming little creatures obviously like it here as much as we do. My attention was first drawn to this fact when a lady-friend reported seeing three on her lawn about 10:30 one evening snuffling about beneath the bird feeder. The next morning she made a quick trip to the Yew Tree Garden Centre and bought a bag of Spike's hedgehog food in the hope of enticing them back the following night. She was not disappointed and has been entertained each evening ever since by as many as four hedgehogs coming and going to the food and water, and the food tray being empty every morning. Her neighbours are also reporting regular nocturnal visits from hedgehogs. Seeing as they are very beneficial to have in the garden, eating slugs and other pesky critters, let's make them as welcome as possible each evening with a tray of proper hedgehog food and a bowl of fresh water and feel privileged indeed that they have found us to their liking. Beatrix Potter would be pleased! JH



Editor September:

Jim Hannington,
c/o Woodland Cottage, Broad Layings, Woolton Hill, Newbury.
RG20 9TP
seamusman3@gmail.com Tel: 0789 5637611

Editor for October, November and December

Kathy Scott
'Bowood' Gore End Road, Ball Hill
RG20 0PG
Phone: 01635 254756 (only between 6-9pm) Email: spectrumwh@outlook.com



Essential
Wealth Management

**Chartered Financial Advice
& Bespoke
Wealth Management Services**

www.essential-wealth.co.uk
01488 669840
enquiries@essential-wealth.co.uk



Cover photo by Jim Hannington 'Steve Waite's new Ice Cream Trike at St Thomas' Fete'.

Spectrum

<http://www.wooltonhill.com/Spectrum.html>

Spectrum is a monthly community magazine serving East Woodhay and Woolton Hill. It is run by a committee of volunteers and is a not for profit publication.

Reports on village activities and articles of local interest are welcomed for publication subject to the discretion of the editor. Copy should reach the editor by the seventh day of the month preceding publication and should be a maximum of 500 words. In the event of pressure for space, the editor reserves the right to reduce the length of the article while attempting to maintain the style of the writer and retaining as much content as possible.

The editorial committee accepts no responsibility for the views expressed by Spectrum contributors or for the quality of goods and services provided by advertisers in this magazine.

The contents of this magazine are protected by copyright and nothing may be reprinted without prior permission.

BED & BREAKFAST

Two spacious rooms, one double and one twin, with own bath/shower room in a private period house in Woolton Hill, 5 miles south of Newbury. No smoking.

Price: £55 per room per night

Contact: Mrs Bridget Wheeler: 01635 250729 or 07812 240210



Quality Plant Specialist

Spacious café serving delicious home-made food

Stunning range of plants, trees and shrubs

Pet foods and accessories

Landscaping and design service



YEW TREE GARDEN CENTRE

Ball Hill, Newbury, RG20 0NG - 01635 25250

Opening times: Mon - Sat: 9am-5.30pm, Sun: 10.30am-4.30pm

www.yewtreegc.co.uk

Diary of Events

August 2019

Thursday 1st St. Martin's Kneeler Group 4 Feltre Place, Newbury 10.30am

Friday 2nd Walking for Health WHCH 10.30am

Monday 5th Evergreens HVH 2-4pm

Wednesday 7th EW Short Mat Bowls EWWH 7.30pm

NWR 8pm

Friday 9th Walking for Health Rampant Cat 10.30am

Tuesday 13th EWWI Old Camps Gdn, Headley 2.30pm

Wednesday 14th EW Short Mat Bowls EWWH 7.30pm

Friday 16th Walking for Health WHCH 10.30am

Saturday 17th East Woodhay Flower Show EWWH 2pm

Wednesday 21st EW Short Mat Bowls EWWH 7.30pm

NWR 8pm

Friday 23rd Walking for Health Rampant Cat 10.30am

Wednesday 28th EW Short Mat Bowls EWWH 7.30pm

Friday 30th Walking for Health WHCH 10.30am

Please note that the Community Café will not be held at St. Thomas' Church during August. The café will start again on Friday 6th September at the new time of 9.30am until 11am

ANTONIA EDWARDS
UPHOLSTERY



Re-Cover and Re-Upholstery work undertaken
with both modern and traditional materials.

+44 (0)7779 02 01 43

WWW.ANTONIAEDWARDSUPHOLSTERY.COM

Light & Day Electrics

Part-P & 17th Edition qualified

New installations
New circuits
Rewire
Consumer unit replacement
Extend Circuits
Lighting
Garages
Outside Buildings
Smoke alarms
Fault Finding

For all your electrical needs & Free estimate

Phone Jeremy

01635 278 485
07885 985 275



Aardvark
PROFESSIONAL OVEN AND
CARPET CLEANING SERVICES

AARDVARKOVENCLEANING.COM
AARDVARKCARPET-CLEANING.COM
07783 810806

LOCK & McDERMOTT LTD

Painters and Decorators

Qualified with over 30 years' experience working in the private sector
TRADING STANDARDS APPROVED TRADER
CRB CHECKED

telephone: 01264 351094 and 01264 363267
email: lynda861@btinternet.com
or j.lock094@btinternet.com

Silver Birch Beauty

Make yourself beautiful

Pamper yourself with our comprehensive range of beauty treatments,
with our fully qualified beauty therapist, in a lovely and relaxing
treatment room in Highclere, offering
complete peace, privacy and tranquillity.



Contact us: 07768 541 816

jo@silverbirchbeauty.co.uk

www.silverbirchbeauty.co.uk

LAMD

Martin C. Mackrill



INTERIOR & EXTERIOR DECORATORS
LINCRUSTA SPECIALIST



Mobile: 07836 228317

email: martinmackrill.deco@gmail.com

as seen on I.T.V's "London's Burning"

as seen in Homes and Gardens 2016

RJ Lampard & Company Ltd

A family run business Est 1976



- Specialist Drainage & Ditching Works
- Road Repairs and Road Construction
- Civil Engineering Works - Concreting etc
- Own fleet of plant and machinery
- Fully qualified and experienced operatives

For further information please call:-

01635 253137 / 07768 201370 or email: rj@rjlampard.co.uk



Upholstery by Suzanne *City & Guilds Qualified*

Bespoke upholstery and soft furnishings specialist

Please feel free to discuss your needs. Courses and one to one instruction available, details on the website.

01635 522282 07979 304044

www.upholsterybysuzanne.co.uk

JO MEACHAM GUITAR TUITION RECORDING STUDIO

www.jomeacham.com

jomeacham@me.com 07899 907447

the garden carpenter

decks, fences, gates and sheds
uncompromising quality

for a free estimate contact Duncan Graham
www.thegardencarpenter.com 01635 552301



ALFRESCO MARQUEE HIRE

Phone: 07470 484816 Web: www.alfrescomarqueehire.co.uk Email: info@alfrescomarqueehire.co.uk

Garden Parties, Wedding, Christenings, Fetes, BBQs, Corporate Events

- Stunning & versatile cover for all occasions.
- Lighting, Matting, Heaters, Dance-floor & Pallet Bar available to complement



- Suitable for events from 20—200+ people
- Alfresco also offer a Hog Roast - including Baps, Apple Sauce, Stuffing & Chef to carve

www.facebook.com/alfrescomarqueses

Letters to the Editor

Thank you from Rookery Farm Studio

Neville and Sharon Perris would like to thank everyone for their huge support throughout May's Open Studio in helping to raise a fantastic £1753.00 for the Hampshire and Isle of Wight Air Ambulance from their Plant sale at Rookery Farm Studio.

If anyone has any unwanted plant pots or surplus plants they will always be welcome throughout the year. (07765 521481)

Essential Changes At The Church Hall

As you may have seen in last month's issue of Spectrum the Woolton Hill Church Hall has been allocated £27,828 towards making some improvements to the hall. One of the improvements relates to the car parking area.

The gravel in the car park keeps moving and covering the disabled parking bay and is not user-friendly for either wheelchair users or parents pushing buggies. Consequently, it has been agreed to replace the gravel with a Marchwood stone that is less likely to move. At the same time the opportunity will be taken to improve the general look of the area and to install more visible posts around the gas tank and cycle rack. Within the hall grounds there is a Horse Chestnut tree which is diseased and will eventually die. It is possible it could lose some branches which overhang the Infants School and the entrance to the Hall. While the tree might survive a few more years, it makes sense to remove it at the same time as undertaking the groundworks to avoid a large additional cost at some future date. The tree is not under a TPO and the Tree Officer at Basingstoke has confirmed that based on the tree advice we were given, we can remove it. The EWPC are in agreement with our proposal and both the St Thomas' Infants School and Woolton Hill Pre-School are happy to see the tree's removal. The tree's proximity to both the Infants School and the WHCH entrance is not ideal as besides the risk from falling chestnuts, pigeon droppings are a real nuisance. We already have to deal with blocked drains caused by leaves and detritus from the tree, which is detrimental to the structure. Basingstoke & Deane have confirmed they are in agreement and have agreed to pay all the costs out of the £106 money. No one likes to see a tree being removed but given the state of the tree we believe this is the best course of action and have agreed to fund the planting of three new trees, from our own resources, by the orchard in Meadowbrook.

Nick, Chair of the Hall Committee

Personal Computers

new - repairs - upgrades - data recovery - no job too small

phone John on 01635 254102

LOGS, COAL, AND
KINDLING
ring Richard 07990 585527



**Pure Clean
Window Cleaning**
*also frames, canopies, cladding,
conservatories, guttering & soffits*

Call Claire or Martin on 01635 523917 or 07958 207451
email kimble@techie.com



FOOT HEALTH CARE
by **PAULA CARTER** Dip CFHP, MPSPract
HOW CAN I HELP YOUR FEET?
I'm a fully qualified, accredited and insured foot health practitioner. General foot care and routine problems relieved quickly and painlessly in the comfort of your own home.

- Nail cutting & filing
- Fungal or thickened nails
- Ingrown nails
- Painful corns removed
- Cracked & dry heels
- Verrucae
- Athletes foot
- Callus reduction
- Diabetic care
- Plantar faciitis & heel pain

Call or text 0790 1822 125





East Woodhay Women's Institute



East Woodhay WI-June

To celebrate our Centenary Christine Dalton & Norman Powers, from the local history society came to talk to us and to show us photographs of 100 years of life in the village.

They started with a picture of the war memorial erected in 1919 with many local names on it.

They moved onto transport in the shape of the local bus service – members of the audience recognised family members on various trips.

St Martin's Guild is longer running than the WI, and is connected with the church – purchasing a new treble bell in 1951. There was also a Methodist Chapel in the village.

The large houses surrounding the village provided work and housing for many of the villagers. There were several shops, a coalman with his horse and cart, a milkman, Ball Hill Dairy and a greengrocer. No butcher, but a meat

delivery service and a fish and chip van. Of course there were many pubs – Axe & Compass, the Sun, the Horse & Groom, the Coopers Arms, the Plough, the Fox, the Wheatsheaf (now the Rampant Cat) and the Furze Bush. Some of these are now private houses lived in by some of our membership!

The first school began in 1788, there was a Dame School and another one whose aim was to produce staff for the 'big houses'.

The village hall was the real centre for the village – for example the Red Cross met there and of course the local silver band, which is still going strong today! I am not a local person and know nothing about the village but found the talk enlightening and the photos of life there fascinating.

June Milsom



ART CLASS NEWBURY

- Step by Step guidance
- Suitable for adult beginners, refresher and improvers
- Meet new friends, unlock your talent
- Fun, easy just 3 hours per week
- Courses held throughout the year, limited spaces – CALL US for more info

The Art Class you always wanted

01256 810933 – www.theseasonsartclass.com

St Thomas Church Fete

St Thomas Church Fete got off to a grand start on Saturday 6th July when it was officially opened by local MP Kit Malthouse cutting the ribbon to allow the waiting crowd to enter the churchyard.

On a beautifully sunny afternoon there was plenty for the visitors to enjoy, from country dancing by the children of St Thomas' Infant School to crockery smashing, a tempting raffle and music by the ever-popular East Woodhay Silver Band. Tea and a mouth-watering display of cakes were in constant demand and the newly-featured Stop Me and Buy One tricycle selling ice creams was a huge success, while the bargain hunters descended on the Bric-a-Brac, books and plants stalls. The holders of the Lucky Programme won a meal for 4 at the local Rampant Cat pub, and many happy punters carried off their winnings from the Bottle Stall and the Teddy Tombola.

Organisers Bertha Bates and Georgie Robertson said there had been an excellent attendance and a very lively atmosphere. They were delighted with the success of the event which raised just over £3500 for church funds, and they were particularly pleased that several of the commercial stallholders had already booked a pitch for next year.

Nicole Bentham



East Woodhay Society



Enjoy The Outdoors But Be Tick Aware

This is a wonderful time to walk around our wonderful area and many footpaths cross fields and go through woodland.

However, the summer is peak time for ticks and unfortunately they are becoming much more common now across large parts of England, particularly in woodlands, along woodland edges, on heathland and moorland and in some grassland sites. Their numbers are increasing largely due to the increase in deer numbers and there are many deer in our area! Ticks in gardens are also increasing. With deer now becoming a more common feature in gardens, they are bringing ticks with them. This can be surprising, particularly where they have only recently become a problem.

These notes are based on publications by Public Health England and I expect you will soon be unconsciously scratching! I know I was when I read the articles.

Ticks are blood sucking members of the spider family and woodland is a particularly perfect habitat for ticks. As well as providing a habitat for the animals they feed on it also provides a moist microclimate for their survival. Ticks spend the majority of their three-year life in the leaf litter, trying to avoid drying out. Periodically, when the conditions are right, they climb up the vegetation and 'quest' for animals. They can sense the carbon dioxide we breathe out, the vibrations we make as we walk and our heat. Without eyes they don't see us. They wave their front legs around and if we get too close and brush the vegetation which they are on they will actually climb on to us.

They're after blood and they've probably been waiting quite a while. They will walk up the skin until they find an area like the back of knees, armpits, waist or groin and begin to feed. It's not pleasant but you don't actually feel it.

Try to keep to the middle of paths and, if possible, try to avoid overhanging vegetation. Ticks don't jump or fly. When you do brush against vegetation check your legs regularly to get the ticks off. Ticks will climb onto clothing so best to check that too. Ticks however, are very small, about the size of a freckle, so unfortunately are not easy to see.

The reason for the concern is that ticks can transmit bacteria during feeding that causes Lyme borreliosis, or Lyme disease. The infection can be serious if not treated. Symptoms of Lyme disease can include a slowly expanding circular reddish rash, flu-like feeling, fatigue, muscle and joint pain.

Most cases are cleared up with a course of antibiotics but without treatment, more serious conditions such as meningitis, facial palsy, nerve damage and arthritis can develop, so prevention and early detection are crucial.

There are lots of theories about removing ticks, like covering them in vaseline or nail varnish or burning them off. None of these are recommended as they can aggravate the tick and lead to secondary infection. It is best to use a pair of fine tipped tweezers or a tick removal tool. The mouthparts of the tick are barbed and can be hard to remove, so a bit of force is required.

If you do find any ticks feeding, remove the tick promptly, clean the bite site with an antiseptic wipe and watch for any symptoms of Lyme disease, remembering to

Enjoy the outdoors but 'be tick aware'

- ticks can transmit microbes that cause infections such as Lyme disease
- you could be exposed to ticks whenever you spend time outdoors, including when in your garden or the local park
- ticks mainly attach to animals, but sometimes they may bite you or your family
- you can prevent tick bites by walking on clearly defined paths, using insect repellent and performing **regular tick checks**
- some tick bites can result in infection, so it is important to remove ticks safely and as quickly as possible
- the safest way to remove a tick is by using a pair of **fine-tipped** tweezers or a tick removal tool
- **contact your GP or dial NHS 111 promptly if you begin to feel unwell with flu-like symptoms or develop a spreading circular red rash. Remember to tell them you were bitten by a tick or have recently spent time outdoors**

Sizes compared to a one penny coin

Tick in the environment Tick attached to skin Lyme disease bulls-eye rash Tick found under hair

For more information, search for the phrases 'ticks' and 'Lyme disease' on these websites: www.nhs.uk www.gov.uk

Guidance number: 2012871

consult a GP if you feel unwell.

Having said the above I don't want to put anyone off from walking around our lovely area as walking is a simple way to help with both physical and mental fitness.

If you are able why not join our Walking for Health walks on Friday mornings: on 2nd, 16th and 30th August we walk from St Thomas' Church Hall, where we also finish with a welcome coffee and on 9th and 23rd August we will be starting and ending at the Rampant Cat. These walks last around an hour and start at 10.30am.

Mark Rand – Chair EWS

Email – eastwoodhaysociety@gmail.com Telephone – 250898

Welcome to the Oakwood Clinic, Highclere



For a highly effective **Deep Tissue Massage** that really gets into the underlying muscular fibres and knots, minimising stiffness and pain.

Wonderful **Hot Stone Therapy** for superior relaxation through Aromatherapy Massage and the healing warmth of stones.

Also **Ear Candling, Reflexology, Aromatherapy, Facials.**

Monthly Offers and vouchers always available. Ladies only please.

Call Charlotte Piddington (ITEC) on 01635-255332, text 07733442059

www.theoakwoodclinic.co.uk

Pressurized hot water system?

Megaflo, Ozo, Ariston, Dimplex, Heatrae-Sadia, Tribune, Santon, Gledhill etc
All manufacturers recommend these systems are serviced regularly by qualified specialists

To book your service and ensure good safety and efficiency contact your local expert



Kevin Pearson Total Pressure Ltd.

New installation a speciality.

07971 250799 01635 253975 totalpressurelimited@aol.com

Mown & Grown

Landscaping ~ Tree Surgery ~ Garden Maintenance

- Hedge cutting
- Tree work
- Grass cutting
- Garden maintenance
- Fencing
- Fully insured

for a free quotation call 07770993817

MownAndGrownNewbury@Gmail.Com ~ Visit our website: MownAndGrown.Net



Bright Sparks Nursery School



East Woodhay Village Hall, Heath End, Newbury (only 4 miles)

We have an **Outstanding** OFSTED report

We have fully qualified teachers including specialists for
French, Music, Dance, Football, Fitness and Forest School

Places are offered to children aged 2 - 5 years

Head Teacher: Mrs Cherida Daniel B.A. Hons, Mont. Dip. EYPS

www.brightsparksnursery.co.uk Telephone: 01747 870432 or 07768123139

TREETOPS WELLBEING & CREATIVITY

YOGA & MEDITATION - ART CLASSES
COOKERY CLASSES - CRAFTS

www.treetops-newbury.co.uk

Contact Emily on 01635 44850 emily@treetops-newbury.co.uk

Facebook - Treetops Newbury



BALL HILL GARAGE

(Established 1929)

MOT, Servicing, Repairs, Air Con, Servicing, Engine Diagnostics, Batteries,
Exhausts, Welding, Tyres & Wheel Alignment.

Horse box and horse trailer service & repair

*courtesy cars available, automatic and manual
free collection and delivery service*

Tel 01635 253282

please check website for further details
www.BallHillGarage.co.uk
enquiries@ballhillgarage.co.uk



OVEN SOLUTIONS

Put That Sparkle Back Into Your Oven

- Full non-caustic deep clean
- Cleans ovens, hobs, extractors & barbecues
- Replacement filters, seals, bulbs & elements
- Non-franchise established 14 years
- Child, pet & eco friendly



see our reviews
on yell.com

Peter Hudson 07733 253 563 Oven-Solutions.co.uk



Penwood Nurseries



Thousands of different hardy trees, shrubs, herbaceous perennials, roses, conifers, fruit, climbers, ferns and grasses are always available.
A family run business. Most of our stock is produced on site and we are happy to help you find just what you are looking for.

enquiries@penwoodnurseries.co.uk www.penwoodnurseries.co.uk
The Drove, Penwood, Newbury RG20 9EW
01635 254366


WILKINS CHIMNEY SWEEP

ESTABLISHED 1895

- TRADITIONAL AND POWER SWEEPING AVAILABLE
- NESTS REMOVED
- CAGES, CAPS AND COWLS FITTED
- CCTV SURVEYS
- SWEEPING CERTIFICATES ISSUED
- PROFESSIONAL, CLEAN SERVICE
- FULLY INSURED
- POLICE CHECKED



01635 45175
wilkinschimneysweep.co.uk/newbury



A D CARPENTRY & BUILDING

- Joinery
- Built-in storage
- Doors and windows
- First and second fix
- Rotten wood
- Refurbishments

Free estimates, competitive prices - call Andrew **07979 455903**



the **Alexander Technique**

Relieve back & neck pain
Enhance health & well-being
Improve posture & stamina

for lessons and courses:
Judith Turner MSTAT
01635 253981
07771 896696
judeturner7@gmail.com
www.jt-alexandertechnique.co.uk



Watermill Sounds

Building & Construction

- Loft Conversions
- Extensions
- Kitchens
- Bathrooms
- Refurbishments
- Patios
- Double glazing

Small selection of building work we undertake
For all your building projects and free estimate

Call Jeremy
01635 278 485
07885 985 275
www.watermill-sounds.co.uk




The Friendly Oil Boiler Service

Fully qualified and insured, OFTEC certified oil fired boiler engineer.
All oil boilers serviced, repaired, replaced and commissioned.

Simon Wake
Daytime or emergency: 07970 072629

01635 282992
www.friendlyoilservice.com

Approved Engineer

R. D. RUTTERFORD

OIL FIRED BOILER MAINTENANCE

MEADOW VIEW
BROAD LAYINGS
WOOLTON HILL
NEWBURY
BERKSHIRE RG20 9TS

01635 253257
Mobile: 07771 610145



P J Cole Plastering & Brickwork

- ✓ Qualified and reliable local bricklayer and plasterer
- ✓ All types of plastering, floor screeds, artexing/plastering over artexed ceilings, coving, tiling, garden walls, patios and extensions undertaken
- ✓ Fully insured
- ✓ No job too small
- ✓ References available
- ✓ Quotations available upon request

**Please contact 07771 865621
or 01635 253300 for further
information**



INTERIOR DESIGN For RESIDENTIAL PROJECTS

From a single room to a whole house our new service aims to create with you an interior that you love to be in.

Including interior design, soft furnishings, spacial planning, home staging and fabric sourcing.

07799 820 582
yarnott@talk21.com
29 Lawrence Mead, Kintbury RG17 9XT



Professional, experienced
and reliable

Garden Design
Border Design
Border Maintenance

01264 738580
07920 425704

www.audreyrobinsongardendesign.co.uk

KEITH LAWRENCE

KITCHEN BEDROOM & BATHROOM INSTALLATIONS



Planning to Completion Traditional & Contemporary

FREE QUOTATIONS 01488 608789

3 Ermin Street, Stockcross, Berkshire RG20 8LG

www.lawrenceinstallations.co.uk 01488 608789



Your local renewable energy specialist

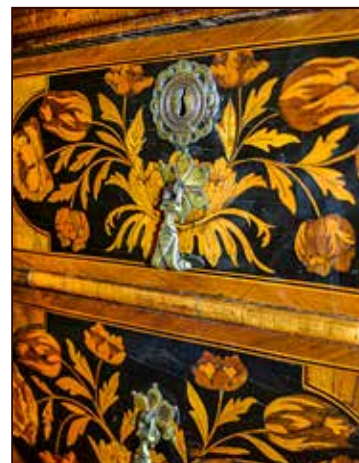
Is your Air Source Heat Pump due a service?

We repair and service Mitsubishi Ecodan Heat Pumps, as well as solar PV systems and Thermaflow boilers.

Contact Paul Gibbons on 07791 364408 or
visit www.greenwiresolar.co.uk



Greenwire Solar, October Cottage, Broadlayings, Woolton Hill, Newbury RG20 9TT



Malcolm Morrisen

*Specialist in all types of Furniture
Restoration and Conservation*

Tel: 01635 281349 / 07990 880717
morrisenrestoration.co.uk
malcolm.morrisen@btinternet.com



berkshirefencing.com

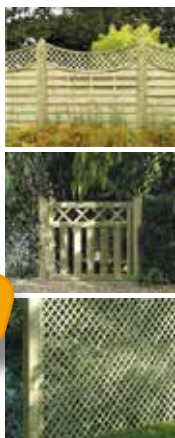
fencing without the fuss

All types of wooden fencing and gates.
Supply and installation or supply and delivery.

Trellis Post & Rail Continental
Traditional Picket Closeboard
Wooden and Concrete Posts and Gravel Boards

Call or email for
a free quotation

Telephone: **01635 254214** mail: mel@berkshirefencing.com
web: berkshirefencing.com



Handy4Jobs

- Painting Decorating & Tiling
- Kitchen & Bathroom Fitting
- All aspects of Gardening & Fencing
- Window Cleaning, Facias & Guttering



General DIY & Gardening ~ Wayne Murkett, Handyman
07796813580 ~ 01635 31016 ~ 07796950639

louise benson mobile hairdresser

01635 38041 ANY TIME

quality hairdressing with a personal service

**St Francis de Sales
Roman Catholic Church,
Wash Common**

Parish Priest: Fr Bruce Barnes.

Masses: Saturday 6pm Sunday 10am

Warren Lodge, Warren Road, Newbury RG14 6NH Tel. 01635 40332

St Thomas' Church Churchyard Working Party



Volunteers taking a well-deserved tea-break at the recent St Thomas' Church churchyard working party (Ian Roch not in photograph but behind the camera). Working parties are held 2 or 3 times per year to undertake general maintenance tasks. If you feel that you could offer assistance, please contact Ian Roch ian.roch@hotmail.co.uk

Home and Property Maintenance and Repairs

- Internal and External decorating
- Kitchen and Bathroom fitting and tiling
- General building work
- Fencing, decking and patios
- No job too small



Because everyone's home is their castle

Local professional family run business

Call for free quotation on 07812 135045 or email: highclerehandyman@gmail.com

The Rectory,
Woolton Hill

Dear Friends,

We have just passed the 50th anniversary of the incredible first landing of men on the moon. On 20th July 1969 many of us who are old enough may still remember the carefully prepared words of Neil Armstrong 'one small step for a man, one giant leap for mankind' as he stepped onto the moon surface for the first time. What an unforgettable moment for history that was!

But how many I wonder know what Buzz Aldrin, there with Neil Armstrong, had prepared to give thanks for his share in this unprecedented event? Before they stepped from the space module, he received Holy Communion. Aldrin was an elder at his Presbyterian Church in Texas at the time, and he had asked his pastor to help. His pastor consecrated a communion wafer and a small vial of communion wine which Buzz Aldrin took with him.

When the lunar module landed Aldrin made the following public statement to those listening 250,000 miles away: "This is the LM pilot. I'd like to take this opportunity to ask every person listening in... to pause for a moment and contemplate the events of the past few hours and to give thanks in his or her own way." He then turned off radio communication and in his own words: "I poured the wine into the chalice our church had given me. In the one-sixth gravity of the moon, the wine slowly curled and gracefully came up the side of the cup". Then he read John 15 verse 5: "I am the vine, you are the branches. Whosoever abides in me will bring forth much fruit. Apart from me you can do nothing."

As he received communion and thanked God, he noted that it was interesting for him to realize that "the very first liquid ever poured on the moon, and the very first food eaten there, were the communion elements."

These events seem such a long time ago now but it is amazing to me that as I look up at the moon in the night sky and pause to thank God for its beauty – that I can also think that those who first explored the moon were able, each in their own way, to take a few moments to give thanks and to pause in wonder at where they were and what had been achieved.

With every blessing to you all,
Canon Christine

From the Church Registers: June 2019

Funeral: may they rest in peace

12 th June	Robert Philip Austin	Highclere
24 th June	Sylvia Diana Joy Broughton	Woolton Hill
		West Berkshire Crematorium

Burial: may she rest in peace

19 th June	Tessa Baring	East Woodhay
-----------------------	--------------	--------------

NORTH WEST HAMPSHIRE BENEFICE

Ashmansworth + Crux Easton + East Woodhay + Highclere + Woolton Hill
making Christ known in our communities

Church Services AUGUST into SEPTEMBER 2019

SUN 4th <i>Trinity 7</i>	Benefice Communion Baptism	East Woodhay Woolton Hill	10.00am 12noon
SUN 11th <i>Trinity 8</i>	Holy Communion Benefice Communion	East Woodhay Woolton Hill	8.00am 10.00am
SUN 18th <i>Trinity 9</i>	Benefice Communion	Highclere	10.00am
SUN 25th <i>Trinity 10</i>	Holy Communion Benefice Communion Baptism	Highclere Ashmansworth Ashmansworth	8.00am 10.00am 12noon
SUN 1st Sept <i>Trinity 11</i>	All Together Matins Parish Communion Cemetery Chapel Service Evensong	Woolton Hill Highclere East Woodhay Highclere Ashmansworth	9.30am 11.00am 11.00am 6.00pm 6.00pm
WED 7th, 14th, 21st, 28th 10.00am Holy Communion Woolton Hill			
<p>Rector: Revd Canon Christine Dale (<i>Rest day: Friday</i>) The Rectory, The Mount, Woolton Hill, Newbury RG20 9QZ 253323</p> <p>Associate Priest: Revd Canon Marvin Bamforth 254718</p> <p>Readers: Mary Herbert 255700, Horace Mitchell 254677, Mike Sarson 250533</p> <p>Reader Emeritus: Rosemary Cahill 253306 Lay preacher: Angela Myers 254559</p>			

St Martin's Guild

Allocation of funds

The Guild Committee are meeting on 16th September, 2019 to distribute the funds raised at this year's fete. As usual the majority of our funds will be going to St Martin's Church to help towards the upkeep and maintenance of the fabric of the building. However, we also help local groups, organisations and village projects. If you are involved in any of these and would like to be considered for a donation from the profits of the Fete, please contact me or any of the other committee members, briefly outlining the aim of your venture and what the money would be used for.

Sarah Leventhorpe, Hon. Sec. (255293)
secretary@eastwoodhayfete.org.uk

St Thomas' Infant School

Woolton Hill

Celebrating The Great Change of St Thomas' Infant School

As a Woolton Hill resident you may have noticed building work taking place at the infant school. You may have also noticed the school looks a bit shinier. What you've been witnessing is The Great Change of St Thomas'.

In 2016, the infant school was lucky to receive some funding. We decided to use the money to update facilities and develop our outdoor environment. The project has been led by members of the County Landscape team which includes teachers, governors, parents, the School Council, and the wider community. Everyone involved agreed all changes should be decided by the children. It is their school after all.

To get the children of St Thomas' involved from the very start, we asked them to come up with a name for our new project. The name with the most votes was crowned the winner—The Great Change of St Thomas'.

The next step was planning. We organised all of the changes into different phases to make the project manageable. Phase one we planned to move the playhouse, add a new outside music area (which you've probably seen from the view on Church Road), and planted a spiritual garden. To make sure our changes met the children's expectations we asked them to design the new garden. We were surprised we didn't get any swimming pool, rollercoasters, or treehouse requests! The children asked for flowers, mushroom seats, wind chimes and ponds. All very sensible, yet wonderful ideas.

To help fund some of the new garden the School Council held a Table Top Sale and sold second-hand books and toys. We also held a Readathon which raised money to buy our mushroom seats.

Over the summer holidays the inside of the school was also transformed. We had a new reception area and a new library installed to give the children freedom to choose a book whenever they liked.

September 2017 marked the start of phase two. We knocked down the caretaker's shed to make room for a climbing net, a bike and scooter shelter was introduced, and the children's wish of more seating areas and a playhouse was granted. We asked the children to develop their own health and safety rules for the climbing ropes. Let's just say Health and Safety Officers would be proud!

Phase three consisted of transforming the outdoor facilities for the Early Years Foundation Stage and the main garden area for the whole school. The children again submitted ideas and we took the best elements from each.

We're now in the final phase and delighted to announce The Great Change of St Thomas' will more or less be complete by the time we close for the summer break. All that is left is to install a canopy at the front and back of the school, to provide shelter in the winter and shade in the summer.

Ending this year on a high, the children are looking forward to their well-deserved summer. We all feel excited to welcome the new children in September 2019, and hope they enjoy the Great Change additions as much as we do.

Written by Mrs Claire Pearce-King, Head Teacher of St Thomas' Infant School, Woolton Hill



PAUL S. WALDEN
Painter & Decorator

For all your painting and decorating requirements



City & Guilds Qualified
Interior & Exterior
25 years' experience
all work guaranteed

Tel no.: 07802 578934

Wonders with Wood

Hardy's Custom-Made Carpentry & Joinery

Chris Hardy
Bruan Road
Newbury

07872124367
chris.hardy72@gmail.com

Clere

BOOKKEEPING SERVICES

- Purchase ledger processing
- Invoicing and credit control
- Bank reconciliations
- VAT returns
- Monthly management reports

The Beeches, 2 Greenways, Woolton Hill, Newbury RG20 9TD

Local professional service tailor-made to meet your requirements and budget

Vicki Kyle-Lawrence
Tel: 07970 297940
Email: info@clerebookkeeping.co.uk
www.clerebookkeeping.co.uk



VG Furnishings. The Curtain Specialists.



01635 867804 • www.curtainspecialists.co.uk

Redlands Property Services Ltd

Specialist in All Aspects of Oil Fired Heating and Plumbing

New Boiler Installations, Servicing, Breakdowns, Oil Tank Replacements
Underfloor Heating, Mains Pressure Hot Water Cylinders Installations

All Work Guaranteed/Free Quotes
Please call : **James Mead**

OFTEC Registered Company C8170

Tel 01189 810 310 / 01635 282 172 Mob 07795 063 067
www.rpsllp.co.uk email boilersupport@rpsllp.co.uk



Do you need your fence repaired or replaced?

Whether your job is large or small, we can help.

Local, fully insured specialists in domestic fencing and gates, shed supply and erection, timber landscaping.

Free site survey and quotation
call Kevin on 07765 443 159
or email kevinitooze@gmail.com



www.
Howard the Sweep
.co.uk

**Cleaner Chimney Sweeping
& Wood Burner Installations**

**07531 277668
01635 202262**

trevor@howardthesweep.co.uk



- Guild of Master Sweepers & HETAS accredited
- Traditional & power sweeping methods
- Flues lined & wood burners installed
- Cowls/caps/cages supplied/fitting
- Bird nests removed
- Camera inspections
- Servicing & repairs
- Certificates issued
- Fully insured

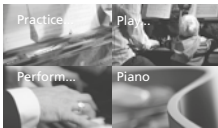
... the piano specialists



Large selection of:
upright pianos | grand pianos
new | used | restored

Grotrian-Steinweg specialist ■
Official Bluthner piano centre ■
Kawai piano selection centre ■

sales | tuning
| transportation | restoration



BEN WHEELER
Pianos

01256 477198
www.benwheelerpianos.co.uk

Shape up your week and keep fit!

Monday - Hone 'N Tone

Gentle Aerobics for the Less Frantic!
(suits any age)
At 6.45 - 7.30pm - Just £4.50

Monday - Simple Circuit

Suitable for all levels
At 7.45 - 8.45pm - Just £5.00

Tuesday - Beginners Step

Learn the easy way to step.
Tone up the muscles while having fun
At 7.30 - 8.30pm - Just £5.00

Thursday - Tums, Bums and Thighs

'Get rid of the enemy'
At 7.30 - 8.30pm - Just £5.00

All classes held at Burghclere Village Hall
Fully qualified instructor - Sally
Contact on 01635 278680

**Food
for
Thought**

Ginny Baldwin

Catering for all occasions

- Business and conference buffets
- Private parties, social functions
- Wedding receptions, etc.

For further information and menus
email: ginny@sykick.com
Telephone: 01635 552332

East Woodhay

FLOWER & PRODUCE SHOW!



2pm Saturday 17th August 2019

East Woodhay Village Hall

Adults 50p ~ Children Free

Lots of Classes to Enter!

Exhibition Classes

* Stalls * Fun Dog Show *
East Woodhay Silver Band
BBQ and Bar



for classes and entry form:
www.eastwoodhayflowershow.co.uk

BALL HILL COACHWORKS

Ball Hill, Newbury, Berkshire

Body & Paintwork Repairs

Affordable VAT Free Repairs

Free Estimates

Delivery & Collection Service


Telephone Ian Liddiard on
01635 254487

ATH PLUMBING & HEATING

Gas Safe & OFTEC Registered

New installations
System updates
Maintenance
Boiler Changes
Power flushing
Bathroom installation
Insured, references available.
Free estimates

Tel: 01635 254787
07979718427



Real Me Yoga
.....
Hatha Yoga

Highclere Village Hall: Tues & Wed pm/evening
Ashmansworth Village Hall: Wed 9am

Fun, friendly & accessible standing or seated classes for
mobility, stamina & balance. Relaxation workshops.

Contact Joanna Edge 07970 166675
hello@RealMeYoga.co.uk
www.RealMeYoga.co.uk

f i

Arthur A Beaver Ltd

ESTABLISHED 1909

Building Contractors
Heating and Sanitary Engineers



INSTALLATIONS
REPAIRS
MAINTENANCE
SYSTEM UPDATES
BOILER CHANGES
QUALITY WORKMANSHIP
& MATERIALS
ALL ASSOCIATED
BUILDING
WORK UNDERTAKEN
INCLUDING
ELECTRICAL WORK
DOMESTIC & COMMERCIAL
FREE ESTIMATES & COMPETITIVE PRICES

Tel 01635 253240

Heather donates her hair to Little Princess Trust

It was about a year ago that Heather Tooze, now aged 7, heard about Little Princess Trust, a UK charity that provides real hair wigs, free of charge, for children and young people who have lost their own hair due to cancer treatment and other illnesses. They also have a division called Hero by LPT, launched in 2017 and dedicated to helping boys and young men with hair loss.



Heather was moved by the thought of a child losing their hair and feeling upset. She decided there and then that she would donate her hair – to help to make another child feel normal and happy again.

She also decided to raise some money for Little Princess Trust, who also fund pioneering research into new and better treatments for childhood cancers. She learned how to set up an online fundraising page (with help from Mum!), wrote her story and posted photos. She reached out to friends and family and was delighted by the support she received.



She then asked if she could have a fundraising stall at the Woolton Hill Village Market, which the market committee kindly welcomed. She sold homemade bookmarks and friendship bracelets as well as some new and nearly new toys and books. The support from our local community was outstanding.

Following the village market she had 12 inches cut off her hair. She is very happy with the result – and very happy to be able to support Little Princess Trust and possibly another child like her. She has raised £835, including £350 from Vodafone. Well done Heather!



You can find out more about Little Princess Trust and Hero by LPT at www.littleprincesses.org.uk

THE HIGHCLERE
RED
HOUSE



TAKEAWAY PIZZA

Tuesday to Friday: 5–10pm

Saturday: 12–10pm

01635 255 531

www.thehighclereredhouse.com

Woolton Hill Post Office and Stores

Post office, Newsagent, National Lottery
Off-Licence & General Stores

Post Office Open:

Monday to Friday 9am-5.30pm

Saturday 9am-12.30pm

We also hold Euros and Dollars



We also deliver newspapers in
surrounding 4 miles.
Woolton Hill Post Office & Stores
Broadlayings
Woolton Hill RG20 9TR
01635 253463

Woolton Hill Preschool

www.wooltonhillpreschool.org.uk

The Church Hall, Woolton Hill, Newbury

30 years of experience, Achieved 'Good' in 2016 Ofsted report

Secure, fun & caring environment

Friendly, loyal & Qualified staff

Strong curriculum based learning through play

French, Debutots & Talking tots at no extra cost!

Places for ages 2-5, government grant available

Breakfast club available for all children up to age 8

The staff walk the children to the Junior and Infants school

Flexible term-time hours. Mon-Thurs 8am-3pm Fri 8am- 12.30pm

Contact on: 01635 254721 Or email at: hello@wooltonhillpreschool.org.uk



TAPESTRY
ONLINE LEARNING
JOURNAL



National Women's Register

NWR

Ancestry

Our ancestry evening was both informative and entertaining as we shared stories of family members. As we met in the week of 75th anniversary of the D Day landings we realised that many had been in the armed forces and had fought in various wars, starting with a Scotsman who took part in a Jacobite rebellion of 1745 sadly to end up being transported to Virginia. One soldier was in the Crimean war and several in WW1 and WW2. Some died acting heroically others returned scarred by what they had experienced and were reluctant to talk about their ordeal. Beautiful handwriting spared one soldier from front line duty because he was assigned an office job, another's musicality saw him entertaining the troops and one relative was a radar instructor on flying boats. Two of the ancestors made celebrity status, one by foiling a plot by Irish terrorists to derail a train, the other by keeping weather diaries for 66 years. The diaries are kept in the National Meteorological Archive, testament to their value to the history of Britain's climate. Our ancestors often came from large families, the girls helping with household chores and usually going into service after leaving school at the age of 14. A happy coincidence brought

joy to one family when their daughter met and married a young farmer who turned out to be the same young man that her father had befriended during WW2 but had not seen since.

Garden Visit

This year's garden visit was to the wonderful Highacre owned by Rhona Tucker who opened it for the first time this year under the National Garden Scheme. The plot is about an acre and includes many seats, nooks and crannies where she can enjoy the spectacular views across the countryside which we all thought would distract us from doing any actual gardening! Rhona showed us around her beautiful garden which is full of perennial plants and shrubs – she doesn't 'do' annuals – but has all year round interest through her knowledgeable planting.

We all marvelled at the huge amount of hard work it must have taken to create such an interesting, colourful, fragrant and inspiring garden. After the tour, we all enjoyed home-made cakes and tea which Rhona sells to raise money for the Rosemary Appeal.

VB & JB

Heritage Restorations

Kate Russell

Specialist Antique & Contemporary Furniture Restorer

West Dean College trained

(Conservation & Restoration Global Centre of Excellence)

0796 8357 788 mrskaterussell@gmail.com

References available on request

Airport Transfers



Professional service in luxury cars to anywhere in the UK for Business & Pleasure.

- Meet & Greet in the terminal, no waiting for shuttle buses
- Flights monitored, so we are always on time
- Door to Door service, leave your own car at home
- Help with luggage
- Affordable prices
- All cards accepted (charges apply)

'Don't drive home tired, let us drive you in comfort and style'

Email: glntransfers@gmail.com

www.gln-transfers.co.uk

Tel: 07747 800707 or 01488 648719



K.Church
m. 07810 033 940
t. (01635) 278557

Plumbing & Heating

Oil Boilers Installed & Commissioned

Central Heating Systems
Hot Water Cylinders
General Plumbing



Registered Technician

East Woodhay Parish Council



Hedge cutting. The council is aware of hedges encroaching of footpaths. One particular area of concern is opposite the church hall where the Palmer Paddock hedges are very overgrown and encroaching on the footpath rendering it hazardous for pedestrians and it is very close to the infants school meaning that it is an additional hazard on their way to school. It is the landowner's statutory responsibility to keep these hedges from encroaching on the footpath but so far the requests from the council have not been matched by action. Photo's show the problem clearly.



causing great concern and we are aware that some residents pick up rubbish on an unofficial basis and for this they deserve our thanks.

Footpaths at this time of year get more regular use and we should be grateful to the landowners who ensure they are accessible but also remember that when walking the footpaths we should stick to the paths and keep animals (and children) under control. Where requested or where livestock are around all dogs should be kept on leads.

Selfish /hazardous parking.

The Parish Council has had posts installed to stop parking on the green triangle outside the Woolton Hill Church hall however this seems not to have deterred this lady who parked on the pavement despite many empty spaces in the recreation ground car park and the church hall car park. Perhaps the light of publicity might persuade her to do otherwise in future.



We would like ideas from parishioners on suitable **sites for public benches** in Woolton Hill. We think we have funding for 2 or 3 but would like to know where best to site them. All ideas to the parish clerk please.

Patricia, our litter warden, has had to report several instances of **fly tipping** this year. If any parishioners see any of this activity a photo of the offender in action would help the council (not the Parish Council) track them down. In general the litter situation is not

CLIFTON'S K9's

"A WALKED DOG IS A HAPPY DOG"

Daily Dog Walking

Feeding & care of all small animals whilst you are away


Whether you are going away for a few hours or a few weeks, or need assistance due to illness or disability, I can help look after your favourite furry friends. Services and prices to suit each individual needs

For a friendly, practical & reliable service

Call Emily on: 0796 700 3234
or email: cliftonconsultants@live.com

References available and fully insured

Going away?



Mature local lady with much experience, will come into your home, feed and love your cats and water your plants. Good local references.

Call 253776 or 07759 318689

TUITION IN FRENCH AND GERMAN

Would you like to brush up your language skills? Would you like to learn a new language from scratch? Does your child need that extra edge at GCSE or A level?

I offer one to one tuition in the relaxed surroundings of my own home with flexible tutoring focusing entirely on your needs. I am a former Head of Department and examiner for The University of Cambridge Examination Board.

Recommendations available.

Contact Carolyn Wood on 01635-254140 or 07799 586263.



Highclere Osteopathy

Sara Winchcombe Registered Osteopath

Neck, back, any joint pain and sports injuries

07748 185 713

sara@highclereosteopathy.co.uk

www.highclereosteopathy.co.uk

Liberty Garden Buildings

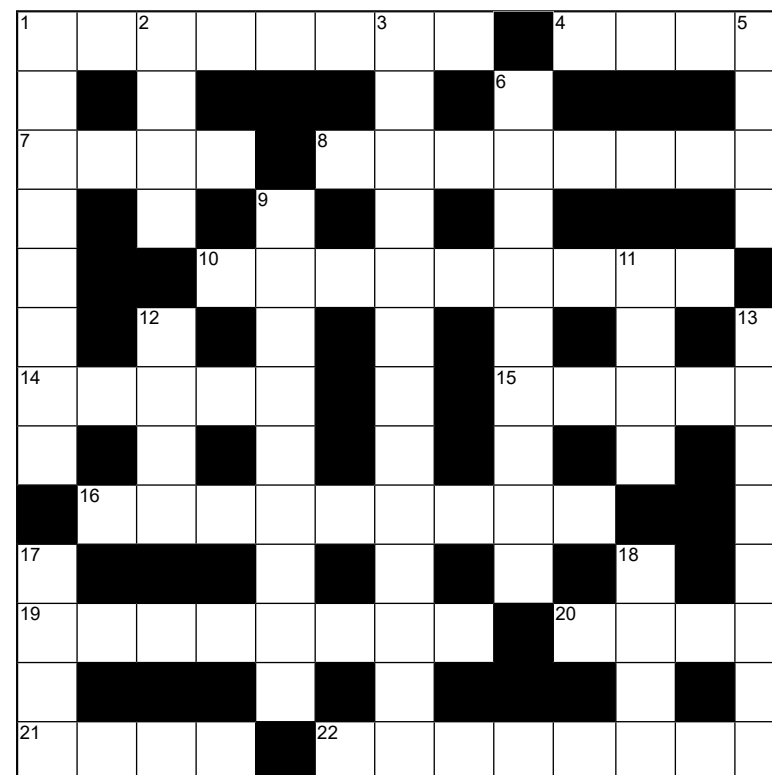


www.libertygardenbuildings.com

Yew Tree Garden Centre, **01635 255533**
Ball Hill, Newbury RG20 ONG



**GREENHOUSES
HOME OFFICES
GARDEN ROOMS
ROTATING PODS
SUMMERHOUSES
GARDEN SHEDS**



199

Answers crossword no 198
Across: 1 Birthday, 4 Card, 7 Inch, 8 Strictly, 10 Amphibian, 14 Osier, 15 Erato, 16 Alligator, 19 Turmeric, 20 List, 21 Play, 22 Celeriac
Down: 1 Brighton, 2 Rich, 3 Anthistamine, 5 Days, 6 Wimbledon, 9 Embroider 11 Adam, 12 Bill, 13 Romantic, 17 Stop, 18 Mini

Across

1. Val went to festival after seeing car back in (8)
4. I am far inside where it is light and even (4)
7. Gave nearly everything to a thousand with nothing on street (4)
8. Not rejected even when acted with mushroom (8)
10. Informally greet knave and headless king whilst taking control of their transport (9)
14. Give Olly a chance to see if he turns out to be faithful (5)
15. Animal sounds dry (5)
16. Give Swindon a ring from Welsh region (9)
19. Picture was of a parrot it seemed (8)
20. Turn out soil from grain store (4)
21. Descend into basin (4)
22. Trumpets call girl (8)

Down

1. Has the mail come? Don't know, I'm on the lawn (8)
2. Take a chance and ski around from the right (4)
3. Go to a rich sale for a dig around (13)
5. Sounded as if he was sorry to be so bad-mannered (4)
6. Poolside seat on the upper floor of a ship (9)
9. Send out team to toil in natural environment (9)
11. Cause annoyance to informer (4)
12. Not a song for her we hear (4)
13. Two rings better for vegetable (8)
17. Soup creation? (4)
18. Someone to manage 22 across (4)

East Woodhay
Local History Society



**East Woodhay Local History Society's programme
of talks for 2019 – 2020**

The society meets in East Woodhay Village Hall at Heath End once a month between September and March (excluding December) as well as having a visit to a local place of interest in the spring.

The membership fee for the year is £7.50 and visitors are welcome for an entrance fee to their chosen talk of £4.

Chris Dalton (Secretary): chrissie.dalton@yahoo.co.uk or 07880 628 114.

Monday 16th September 2019.

Becky Peacock: *The Railway Orphanage*

Becky Peacock, from the Watercress Line, will talk about the Southern Railway Orphanage which was set up in Woking in 1885. To start with it was for the care of 'fatherless girls' but later expanded to include boys and was eventually closed in 1988.

Monday 14th October 2019.

Jonathan Sayers: *Greenham Common*

Jonathan will explain the history of the Greenham Common airbase with particular reference to the Cold War years. He is an impressive fount of knowledge about the airbase and leads history walks from the Greenham control tower.

Monday 18th November 2019.

Roger Day: *Motoring in the Kennet Valley*

A brief history of the Automobile Association from a local perspective. Roger is a popular and engaging speaker.

Monday 20th January 2020.

Dr Hugh Pihlens: *Who do you think you are?*

Dr Pihlens will share the fascinating story of his ancestor who fled Latvia, then part of the Russian Empire, in 1906. His talk is a personal one but which also illustrates a turbulent period in European history.

Monday 17th February 2020.

AGM and members' 10 minute talks.

Please put your thinking caps on and plan ahead!

Monday 16th March 2020.

Mike Robinson: *The History of Farming*

A loyal member of the society, Mike is also an authority on the development of agriculture. This talk is a sequel to his fascinating talk about agriculture in general and will focus this time on the local area, its estates and tenant farms.

TT Garden Care
Private & Commercial Maintenance
Hedge Cutting - Lawn Care - Fencing - Small Tree Work
Turfing - Weed Control (NPTC Qualified)
Free estimates on request
Trevor Thomas
T : 07949 995658
01635 865604
E : tt4gardencare@btinternet.com

experienced, qualified
TUTORS
available

- English, Mathematics
- Sciences, Languages
- Geography, History
- English as a Foreign Language
- Computing

All ages, all levels

Telephone:
01635 253942

AREA SWEEP

CHIMNEY SWEEP

A PROFESSIONAL CHIMNEY SWEEP SERVICE
CLEAN RELIABLE BRUSH AND VACUUM
FULLY INSURED MANY YEARS EXPERIENCE

AGA'S
RAYBURNS
JETMASTERS
ALL OPEN FIRES
WOODBURNERS
NEST REMOVALS
OIL FIRED BOILERS
SWEEPING CERTIFICATES ISSUED
CAPS AND COWLS SUPPLIED AND FITTED



CALL DARREN
01635 569195/07900398678
areasweep@btinternet.com



OUR SURGERIES:

Burlyns Surgery, Burlyns,
East Woodhay, Newbury,
Berkshire, RG20 0NU.

Foxhold House Surgery,
Crookham Common,
Thatcham,
Berkshire, RG19 8EL



We can help you meet all your pet and equine healthcare needs, with professional and caring staff who can treat your animal at a time that suits you. Out vets offer an emergency service giving you 24 hour reassurance.

...we're here to listen

24 hour phoneline: 01635 254544

www.coachhousevets.com

 **G A BUTLER & SONS LTD**
Specialist Tree Surgeons

01635 254 771

- Tree Surgery
- Hedge Cutting
- Stump Grinding
- Seasoned Logs
- Wood Chippings
- Fencing



City & Guilds
NPTC
Qualified



www.lopit.co.uk



Newbury Smile Studio
DENTAL PRACTICE

Telephone **01635 47757** or visit
www.newburydentist.co.uk
or email info@newburydentist.co.uk

"General private dentistry
with extra special care for
nervous people"

MARIO'S PLUMBING

25 years' experience

- gas/oil boiler servicing
and replacements
- power flushing
- central heating and
general plumbing

GAS-SAFE registered

Telephone Mario
07967123819

Thyme
The food you would have cooked

- ❖ Can I help you fill your fridge or freezer?
- ❖ Freshly made, nutritious food for busy people.
- ❖ Menu of main dishes and puddings to suit an informal supper with family or friends.
- ❖ Menus also available for dinner parties, family or special celebrations.
- ❖ All dishes made to order and delivered locally.

Rhona Everard

Mob: 077969 46664

Email: thymehomecook@gmail.com

Web: www.facebook.com/thymehomecook

smarthire
— vehicle rental —

01635 552200

SmarthireVehicleRental.co.uk

Third Street, Greenham Business Park,
Newbury RG19 6HW

- CARS
- VANS
- MINIBUSES
- TRUCKS

*Antique Silver & Gold
Bought, sold & valued*



*Edward, Reis Silverware,
Ball Hill.
Tel. 01635 250505
e.reis@tiscali.co.uk*

M.W. SUTTON

Roofing Specialists
3 Byeways, Highclere

Family business established 1972

Contact Jason Sutton
for free quotations:

Mobile 07770 626230

Home 01635 253951

suttonroofing@yahoo.co.uk

Fully insured to carry out
all your roofing needs

  
Barking Boutique
Professional Dog Grooming

**Patient and Caring Service for
all Breeds**

Clipping, Hand Stripping,

Scissoring, De-matting,

Bathing, Nail & Ear Care



Alison Sutton 07706695773
barkingboutique@yahoo.co.uk

Windfield House, Byeways, Highclere,
Newbury, Berkshire RG20 9PA

Directory of Local Organizations

Schools

The Clere	278372
Community Office.	278129
St Martin's East Woodhay, Infnts & Jnrs www.st-martins.hants.sch.uk	253489
St Thomas', Woolton Hill, Infants www.stthomasinfant.co.uk	253431
Woolton Hill Juniors www.wooltonhilljunior.co.uk	253364

Spectrum <http://www.wooltonhill.com/Spectrum.html>

Chairman	Bob King	253378
Treasurer	Gill Burrows	254301
Distribution	Chris Vane	253707
Advertising.	Michael Robinson.	253004
Editors: Abbie Dando	07477 987943	
Mary Gulliver	mary@TheGullivers.co.uk	254567
Kathy Scott (6pm-9pm)	spectrumwh@outlook.com	254756
Jim Hannington	seamusman3@gmail.com	07895637611

St Martin's Guild Secretary: Sarah Leventhorpe 255293
info@eastwoodhayfete.org.uk www.eastwoodhayfete.org.uk

St Thomas' Handbell Ringers Nicole Bentham. 255582

Woolton Hill & District Gardeners' Club

Contact Nick Harcourt 253546

Woolton Hill Argyle Football Club. Jon Dennis money.whafc@gmail.com

Woolton Hill Church Hall

Nick Harcourt, Charnwood Cottage, Broadlayings 253546
hallbookings@wooltonhill.com 07971 064087

Woolton Hill Pre-School. Brenda Login 254721

Woolton Hill Sports Club

(tennis, table tennis) Alison Whitehorn 254391

Woolton Hill Village Market Claire and Sally
www.whvm.co whvmarket@gmail.com

Woolton Hill Website. Contact: Helen Carlile 254043
www.WooltonHill.com

Spectrum Advertising Rates with effect from April 2019

Annual rates—please contact Michael Robinson Tel 253004
 For ALL fund-raising events (charity, political, etc) £3 per quarter page b&w, £5 colour
 For all commercial and professional advertisements: £25 (colour) per quarter page
 Invoices are issued once the publication has been sent to print. Please note that advertisements may be altered in size to fit the space available.

Guidance to advertisers: <http://www.wooltonhill.com/Spectrum.html>
Subscription: £5 per annum



IMPROVING THE LOOK OF YOUR HOME

Doors | Windows | Conservatories | Orangeries | Porches | Small Extensions
 Aluminium Bi-Fold Doors | Kitchen Fitting | Electric Roller Garage Doors

www.mgwindowsnewbury.co.uk info@mgwindowsnewbury.co.uk
 01635 254083 or 07900 487274

Psst - you'd be nuts not to ask us for a free market appraisal



"I would like to thank you so much for all the care and attention to detail keeping us informed at all times. I would have no hesitation in recommending you to friends who may be letting or selling in the future"

Mrs R sold and rented through Brunsdens

Contact Brunsdens Associates: Telephone: 01635 255501
Email: property@brunsden.com - Visit: www.brunsdens.com



The Old Axe & Compass, East End, Newbury RG20 0AA



CONTROL SERVICES
 Pest Management & Timber Care

Wasps • Hornets • Rats • Mice • Moles
 Woodworm • Ants • Fleas • Flies • Moths
 Bed Bugs • Beetles • Cockroaches

Domestic and Commercial

www.pestcontrolberkshire.com

01635 250 852



MARSH fuels



Heating Oil now available to collect in 20 litre drums

01635 253 253
www.marshfuels.co.uk

H C Marsh (Newbury) Ltd, Ball Hill, Newbury, Berkshire. RG20 0PW

Esseborne Manor hotel & restaurant

Weekday lunch with a glass
of wine & canapes £23
Sunday buffet lunch £28
Afternoon Tea £17
Dinner from £35
7course tasting dinner £55
Monthly Ladies Lunch £30

Hurstbourne Tarrant
Near Newbury
SP11 0ER



To book call 01264 736 444